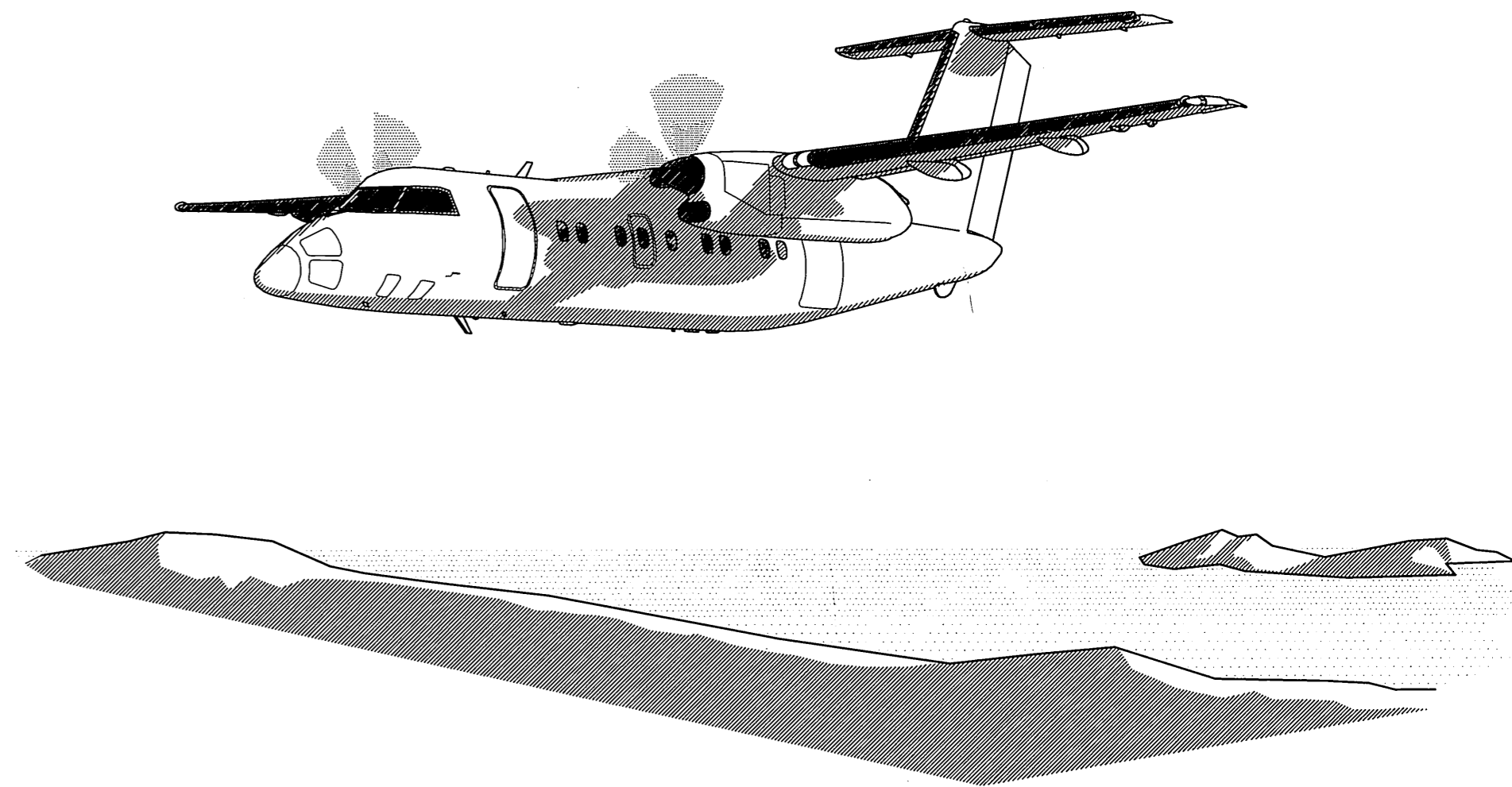


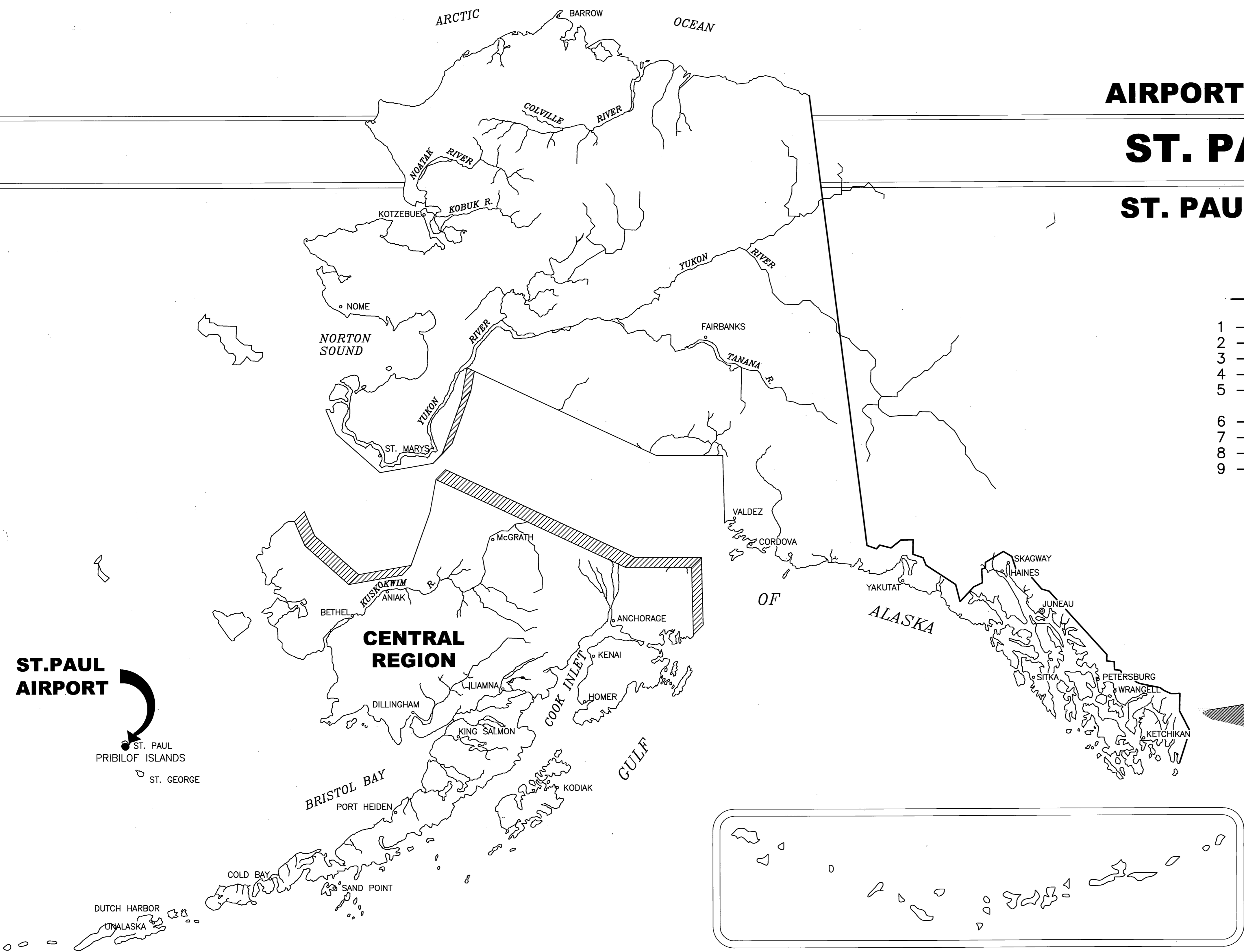
AIRPORT LAYOUT PLAN FOR ST. PAUL AIRPORT ST. PAUL ISLAND, ALASKA 2004

DRAWING INDEX

- 1 - COVER SHEET AND INDEX
- 2 - VICINITY MAP AND DATA TABLES
- 3 - EXISTING PLAN AND PROFILE
- 4 - ULTIMATE PLAN AND PROFILE
- 5 - RUNWAY 18-36 INNER PORTION OF APPROACH SURFACES
- 6 - AIRPORT AIRSPACE
- 7 - PROPERTY PLAN (Sheet 1 of 2)
- 8 - PROPERTY PLAN (Sheet 2 of 2)
- 9 - NARRATIVE REPORT



Date Plotted: 04/13/04
 Plot Ratio and Layout: 1:1
 File: P:\Projects\058192\Design\ALP\Rev-SIP-ALP.dwg
 Designed By: WPH
 Checked By: SGO
 Drawn By: SLS



BY	DATE	REVISIONS
JL	09/10/08	AS-BUILT SHEETS 2-7 PER PROJECT# 56948
	1/10/08 JL	

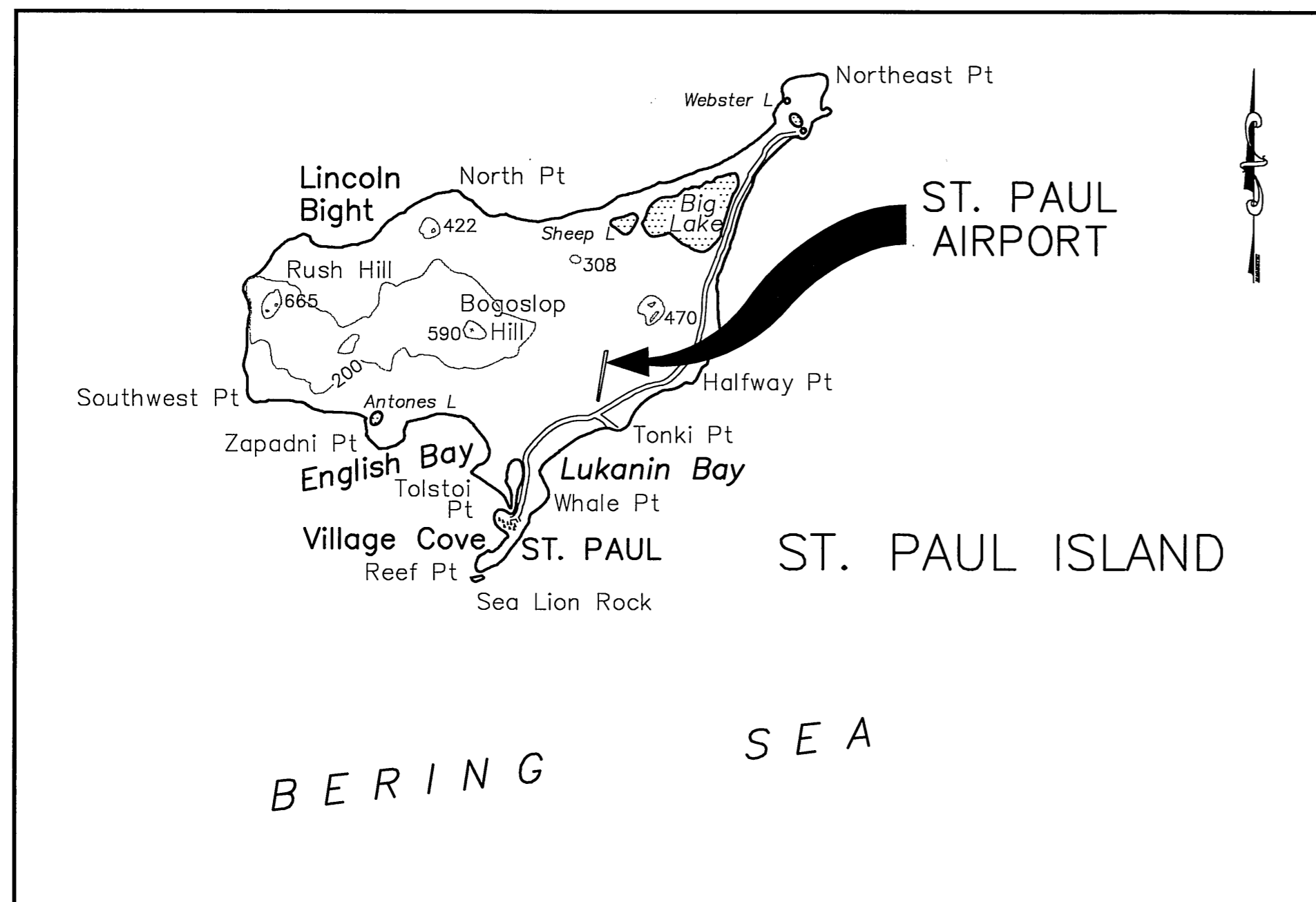
SPONSORED BY
STATE OF ALASKA
DEPARTMENT OF TRANSPORTATION
AND PUBLIC FACILITIES
CENTRAL REGION

CONCUR *Gordon C. Keith* **DATE** *4/28/04*
GORDON C. KEITH, PE. **CONSTRUCTION & OPERATIONS DIRECTOR**
APPROVED *Robert A. Campbell* **DATE** *4/28/04*
ROBERT A. CAMPBELL, P.E. **REGIONAL PRECONSTRUCTION ENGINEER**

ST. PAUL AIRPORT AIRPORT LAYOUT PLAN

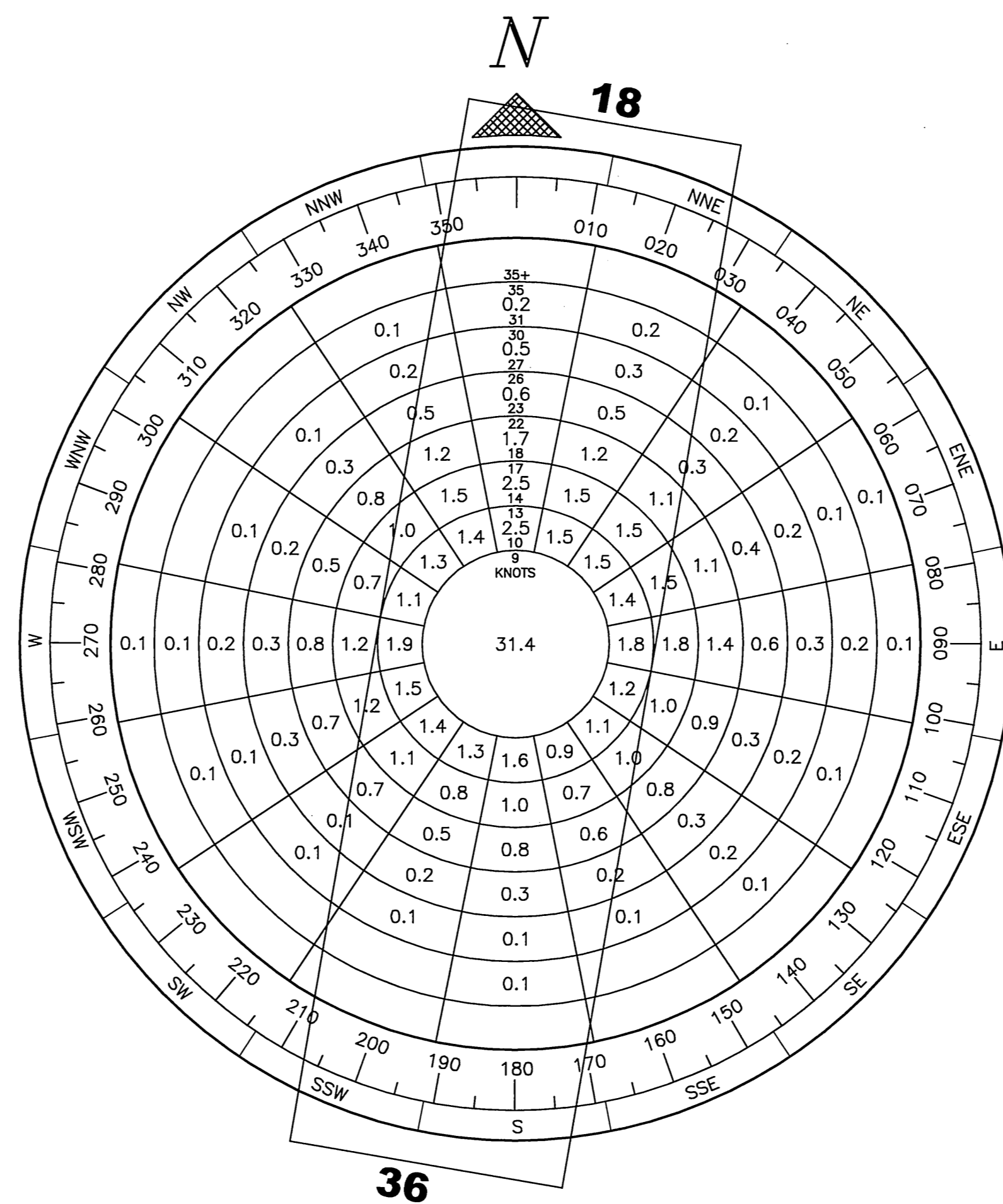
AIRPORT LAYOUT PLAN CONDITIONAL APPROVAL
 SUBJECT TO ALP APPROVAL LETTER DATED *5/12/04*
 By: *[Signature]* DATE: *5/12/04*
 FAA AIRPORTS DIVISION
 ALASKAN REGION, AAL-601
 F.A.A. AIRSPACE REVIEW NUMBER:
 03-AAL-174-NRA

Date Plotted: 05/26/06
 Plot Ratio and Layout: 1:1
 File: P:\Projects\056182\Design\ALP\edit-SIP-ALP.dwg
 Designed By: WSH
 Checked By: GBO
 Drawn By: GIB



VICINITY MAP

T 35 S, R 131 W, SEC 8 & 17,
SEWARD MERIDIAN, ALASKA
U.S.G.S. PRIBILOF ISLANDS, AK.



WIND DATA

WIND COVERAGE:	SPEED	R/W 18/36
	10.5 KNOTS	67.69%
	13 KNOTS	78.15%
	16 KNOTS	87.13%
	20 KNOTS	93.95%

SOURCE: U.S. DEPARTMENT OF COMMERCE, NATIONAL OCEANIC AND ATMOSPHERIC ADMINISTRATION, WESTERN REGIONAL CLIMATE CENTER
FEBRUARY 13, 2003

PERIOD: JULY 1, 1996 - DECEMBER 31, 2002

NON-STANDARD CONDITIONS

ITEM	EXISTING	STANDARD	FUTURE
APRON SETBACK	500'	500'	500'
WIND COVERAGE (16 KNOTS)	87.13%	95%	N/A
RUNWAY PROFILE	CATEGORY C	CATEGORY C	CATEGORY C
MLS BUILDING	IN ROFA	REMOVED	REMOVED

BASIC DATA TABLE

RUNWAY DATA

ITEM	RUNWAY 18		RUNWAY 36	
	EXISTING	ULTIMATE	EXISTING	ULTIMATE
EFFECTIVE GRADIENT	-0.42%	SAME	+0.42%	SAME
% WIND COVERAGE (16 KNOTS)	87.13%	SAME	87.13%	SAME
INSTRUMENT RUNWAY	NPI	NPI	YES	YES
PAVEMENT SURFACE	ASPHALT PVMT.	SAME	ASPHALT PVMT.	SAME
PAVEMENT STRENGTH (LBS.)	169,000(T)	SAME	169,000(T)	SAME
APPROACH SURFACES	34:1	34:1	50:1	50:1
VISIBILITY MINIMUMS	1 MILE	SAME	3/4 MILE	1/2 MILE
RUNWAY LIGHTING	HIRL	HIRL	HIRL	HIRL
RUNWAY MARKING	PRECISION INST	SAME	PRECISION INST	SAME
NAVIGATION AIDS			ILS	ILS
	NDB,DME,GPS	NDB,DME,GPS	NDB,DME,GPS	NDB,DME,GPS
VISUAL AIDS	MALS, VASI	MALS, PAPI	MALS, VASI	MALS, PAPI
RUNWAY DIMENSION	150' x 6496	SAME	150' x 6496	SAME
RUNWAY SAFETY AREA DIMENSION	496' x 8496'	SAME	496' x 8496'	SAME
RUNWAY OBJECT FREE AREA DIMENSION	800' x 8496'	SAME	800' x 8496'	SAME
PRECISION R/W OBJECT FREE AREA DIMENSION	200' x 800'	SAME	200' x 800'	SAME
RUNWAY OBSTACLE FREE ZONE DIMENSION	400' x 6896'	SAME	400' x 6896'	SAME
RUNWAY 18 RPZ & RUNWAY 36 RPZ	1000' x 2500' x 1750'		1000' x 2500' x 1750'	
AIRCRAFT DESIGN GROUP	III	SAME	III	SAME
AIRCRAFT APPROACH CATEGORY	C	SAME	C	SAME

AIRPORT DATA

ITEM	EXISTING	ULTIMATE
AIRPORT ELEVATION (M.S.L.)	64.6'	SAME
AIRPORT REFERENCE POINT (A.R.P.) (NAD 1983)	LAT. 57° 09' 58.66"	LAT. 57° 09' 58.66"
	LONG. 170° 13' 21.19"	LONG. 170° 13' 21.19"
TAXIWAY LIGHTING	MILT	SAME
RAMP LIGHTING	FLOOD	SAME
MEAN MAX. TEMPERATURE, HOTTEST MONTH (°F)	51'	SAME
RUNWAY 18 THRESHOLD STA. 91+98 (NAD 1983)	LAT. 57° 10' 30.21" N	LAT. 57° 10' 30.21" N
	LONG. 170° 13' 11.32" W	LONG. 170° 13' 11.32" W
	TOUCHDOWN ELEV. (NAD 88)	68.8
		SAME
RUNWAY 36 THRESHOLD STA. 27+02 (NAD 1983)	LAT. 57° 09' 27.11" N	LAT. 57° 09' 27.11" N
	LONG. 170° 13' 31.06" W	LONG. 170° 13' 31.06" W
	TOUCHDOWN ELEV. (NAD 88)	42.0
		SAME
AIRPORT REFERENCE CODE		C-III
MAGNETIC DECLINATION, YEAR	IGRF 2005	9°56'E (07' W/YR) (2006, NGS)
ICAO & NATIONAL AIRPORT IDENTIFIERS	PASN	SNP

*APPROACH PROCEDURES FOR THIS AIRPORT ARE BASED ON A MAGNETIC DECLINATION OF 13°E
PIR SURVEY DATA FROM A GROUND-BASED TOPOGRAPHIC SURVEY BY DOWL ENGINEERS IN 2002/2003

LEGEND

ITEM	EXISTING	ULTIMATE
PROPERTY LINE	---	---
BUILDING RESTRICTION LINE (B.R.L.)	---BRL---	---BRL---
INTERIOR TRACT LINE	---	---
RUNWAY CENTERLINE	---	---
EASEMENT LINE	---	---
THRESHOLD LIGHTS	⊙	⊙
AIRPORT REFERENCE POINT	⊙	⊙
WIND CONE & SEGMENTED CIRCLE	⊙	⊙
CONTOURS	5 --- 5	SAME
BUILDINGS	■	□
ROTATING BEACON	⊙	⊙
METAL ANTENNA MASTS	▲	△
WOOD ANTENNA MAST	●	○
VASI	■	□
SERVICE ROADS	---	---
FENCE	x --- x	x --- x
SET ALUMINUM CAP SURVEY MONUMENT	⊙	⊙
FOUND OTHER SURVEY MONUMENT	○	○
FOUND BENCH MARK	⊙	⊙
FOUND BLM MONUMENT	⊙	⊙
FOUND REBAR	•	•
RUNWAY SAFETY AREA	---RSA---	---RSA---
RUNWAY OBJECT FREE AREA	---ROFA---	---ROFA---
TAXIWAY OBJECT FREE AREA	---TOFA---	---TOFA---
OBSTACLE FREE ZONE	---OFZ---	---OFZ---
GLIDE SLOPE CRITICAL AREA	---GSCA---	---GSCA---
LOCALIZER CRITICAL AREA	---LCA---	---LCA---
PAVED SURFACE - NEAR TERM DEVELOPMENT	▨	▨
PAVED SURFACE - LONG TERM DEVELOPMENT	▩	▩
GRAVEL SURFACE	▧	▧
MALS/MALSF	○○○○○	○○○○○

STATE OF ALASKA
**DEPARTMENT OF TRANSPORTATION
AND PUBLIC FACILITIES**
CENTRAL REGION

ST. PAUL AIRPORT

AIRPORT LAYOUT PLAN
VICINITY MAP AND DATA TABLES

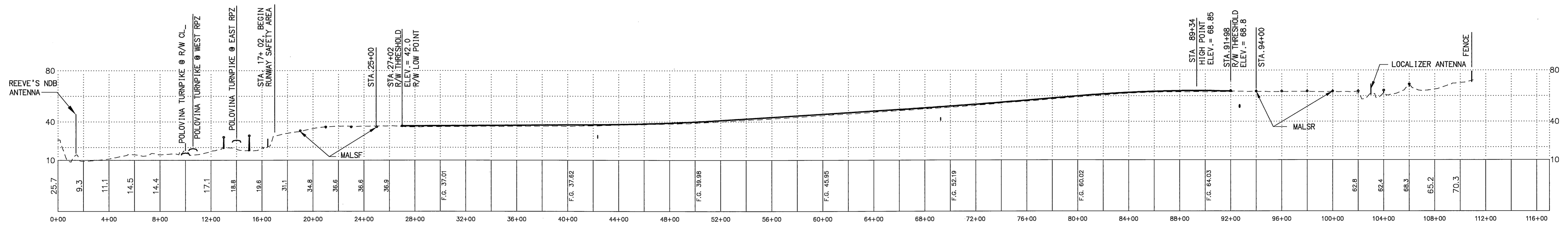
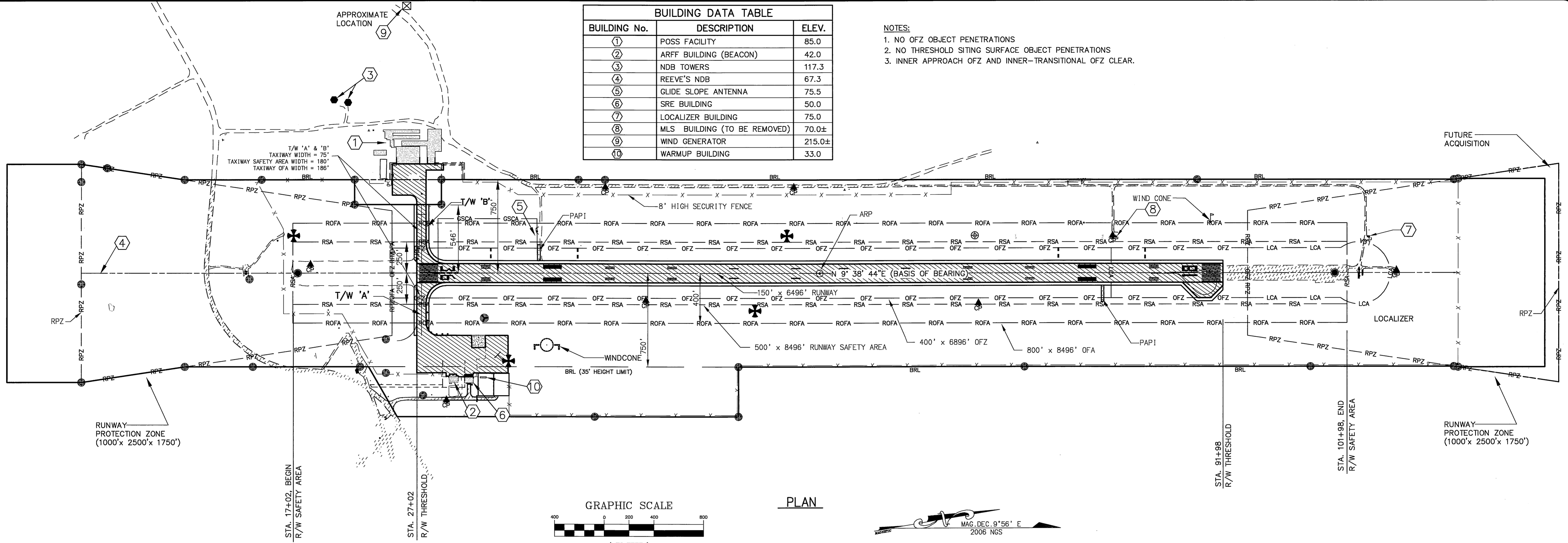
SHEET
2
OF
9

GEL	09/10/08	AS-BUILT PER PROJECT# 56948
BY	DATE	REVISIONS

Date Plotted: 05/19/06
 Plot Ratio and Layout: 1"=1', layout=
 File: F:\Projects\56948\B2\Design\ALP\plan-appro.dwg
 Designed By: WPH
 Checked By: SGO
 Drawn By: GLB

BUILDING DATA TABLE		
BUILDING No.	DESCRIPTION	ELEV.
①	POSS FACILITY	85.0
②	ARFF BUILDING (BEACON)	42.0
③	NDB TOWERS	117.3
④	REEVE'S NDB	67.3
⑤	GLIDE SLOPE ANTENNA	75.5
⑥	SRE BUILDING	50.0
⑦	LOCALIZER BUILDING	75.0
⑧	MLS BUILDING (TO BE REMOVED)	70.0±
⑨	WIND GENERATOR	215.0±
⑩	WARMUP BUILDING	33.0

NOTES:
 1. NO OFZ OBJECT PENETRATIONS
 2. NO THRESHOLD SITING SURFACE OBJECT PENETRATIONS
 3. INNER APPROACH OFZ AND INNER-TRANSITIONAL OFZ CLEAR.



GEL	09/10/08	AS-BUILT PER PROJECT# 56948
BY	DATE	REVISIONS

STATE OF ALASKA
**DEPARTMENT OF TRANSPORTATION
 AND PUBLIC FACILITIES**
 CENTRAL REGION

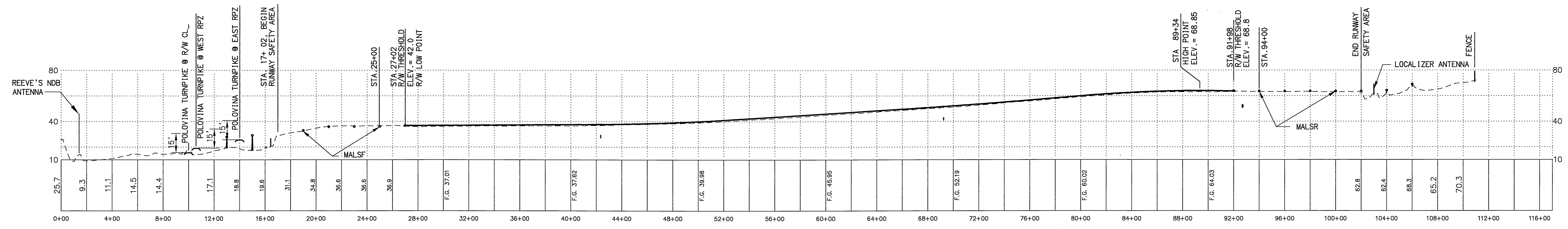
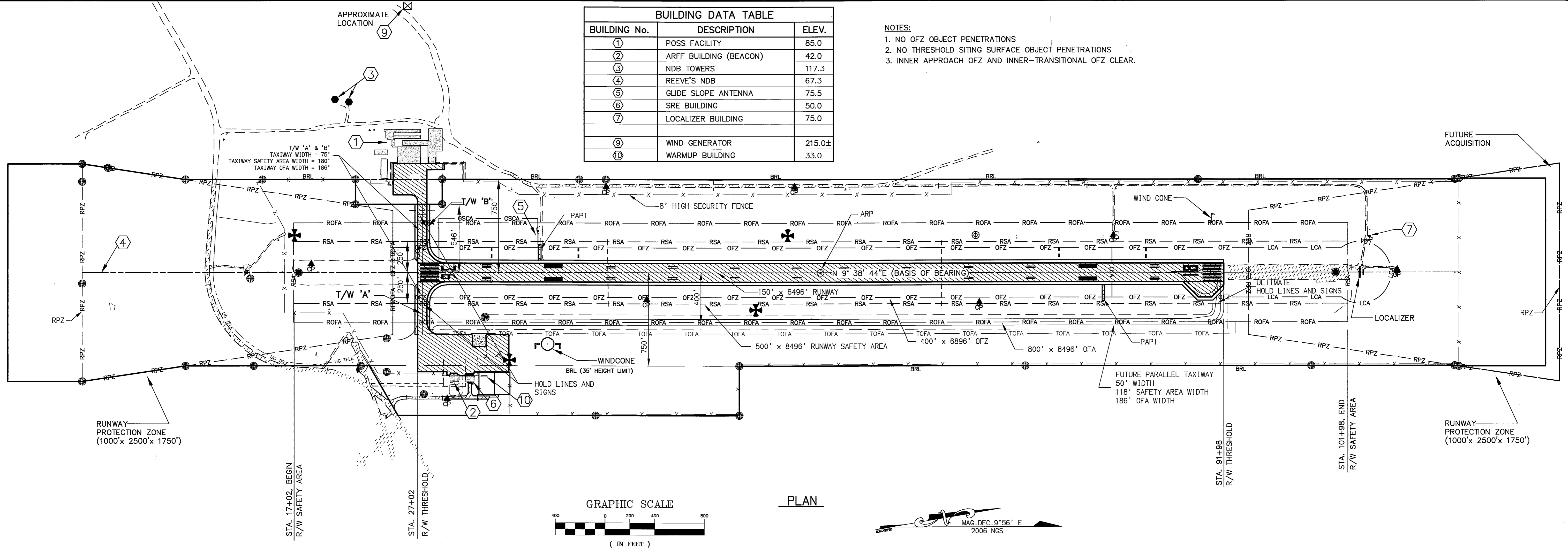
ST. PAUL AIRPORT
 AIRPORT LAYOUT PLAN
 RUNWAY 18-36
 EXISTING PLAN AND PROFILE

SHEET
3
 OF
9

Date Plotted: 06/19/06
 Plot Ratio and Layout: 1=1, layout= F:\Projects\058182\Design\ALP\plan-appro.dwg
 Designed By: WPH
 Checked By: SGO
 Drawn By: GLB

BUILDING DATA TABLE		
BUILDING No.	DESCRIPTION	ELEV.
①	POSS FACILITY	85.0
②	ARFF BUILDING (BEACON)	42.0
③	NDB TOWERS	117.3
④	REEVE'S NDB	67.3
⑤	GLIDE SLOPE ANTENNA	75.5
⑥	SRE BUILDING	50.0
⑦	LOCALIZER BUILDING	75.0
⑨	WIND GENERATOR	215.0±
⑩	WARMUP BUILDING	33.0

NOTES:
 1. NO OFZ OBJECT PENETRATIONS
 2. NO THRESHOLD SITING SURFACE OBJECT PENETRATIONS
 3. INNER APPROACH OFZ AND INNER-TRANSITIONAL OFZ CLEAR.



PROFILE

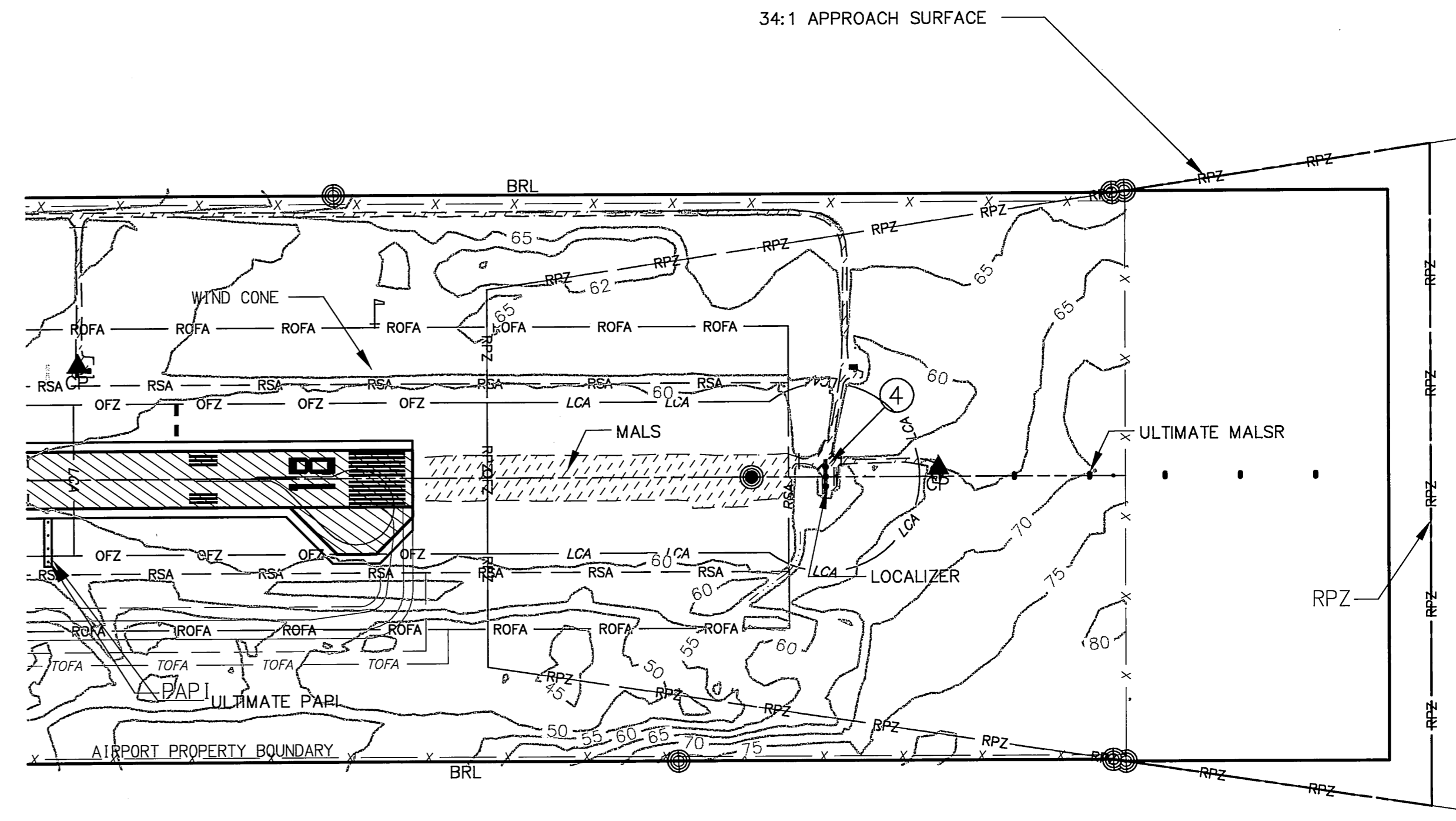
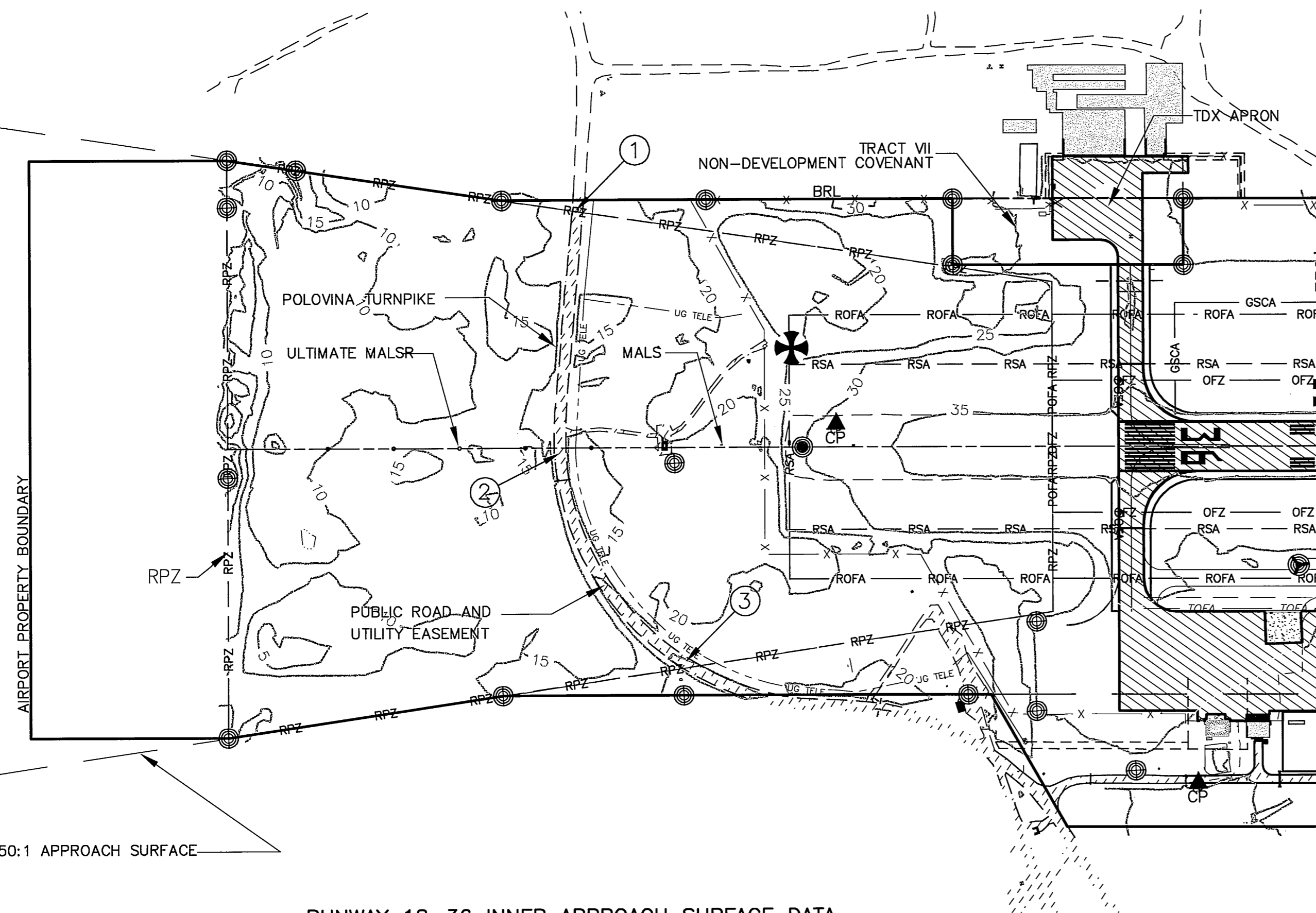
STATE OF ALASKA
**DEPARTMENT OF TRANSPORTATION
 AND PUBLIC FACILITIES**
 CENTRAL REGION

ST. PAUL AIRPORT

AIRPORT LAYOUT PLAN
 RUNWAY 18-36
 ULTIMATE PLAN AND PROFILE

GEL	09/10/08	AS-BUILT PER PROJECT# 56948
BY	DATE	REVISIONS

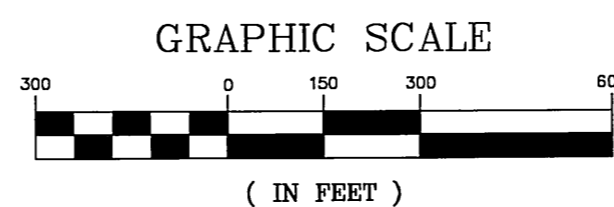
Date Plotted: 06/19/06
 Plot Ratio and Layout: 1=1, layout=
 File: P:\Projects\058182\Design\ALP\plan-appro.dwg
 Designed By: WPH
 Checked By: SCO
 Drawn By: GLB



RUNWAY 18-36 INNER APPROACH SURFACE DATA

No.	STATION	OFFSET	OBJECT	OBJECT ELEVATION	PART 77 ELEVATION	VERTICAL CLEARANCE	AMOUNT OF PENETRATION
1	10+61	746' L	ROAD	34'	65'	31'	NONE
2	10+00	0	ROAD	32'	66'	34'	NONE
3	14+42	689' R	ROAD	40'	57'	17'	NONE

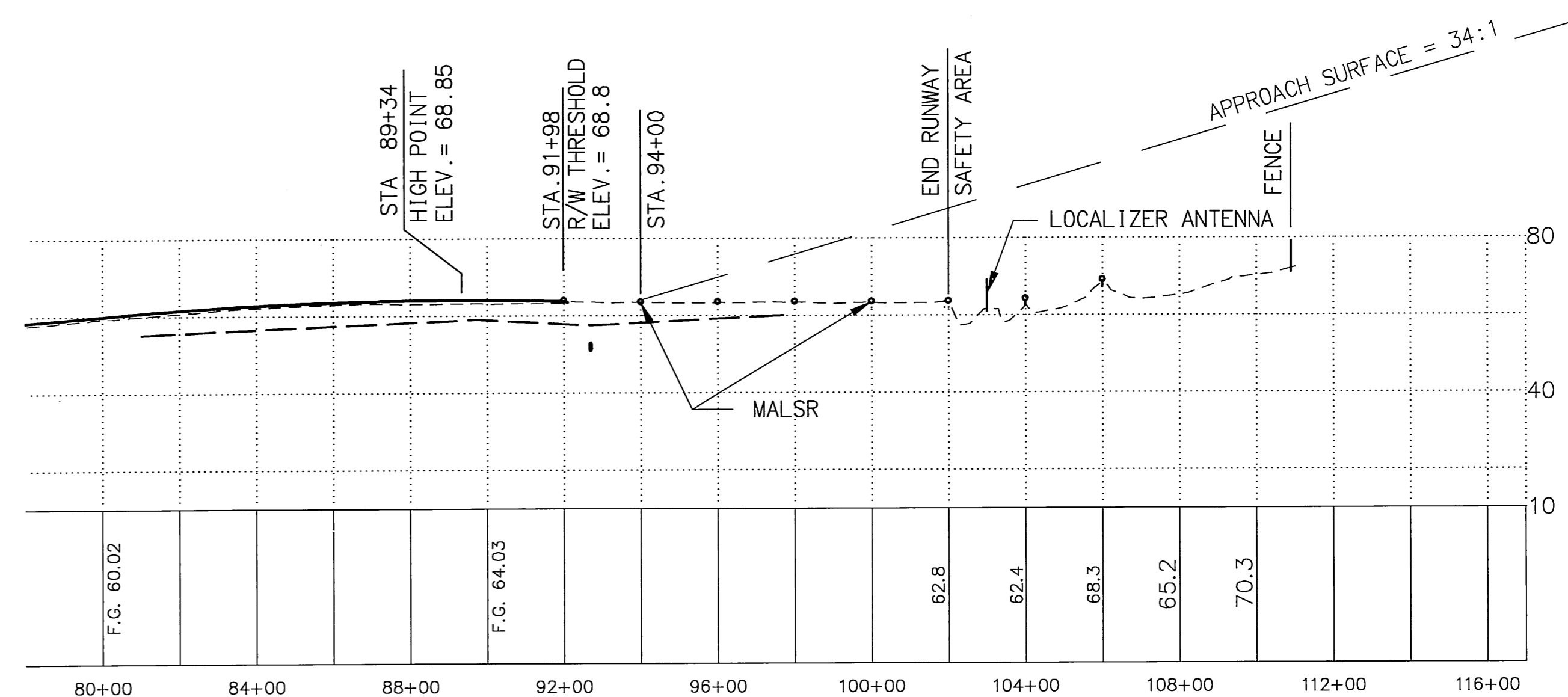
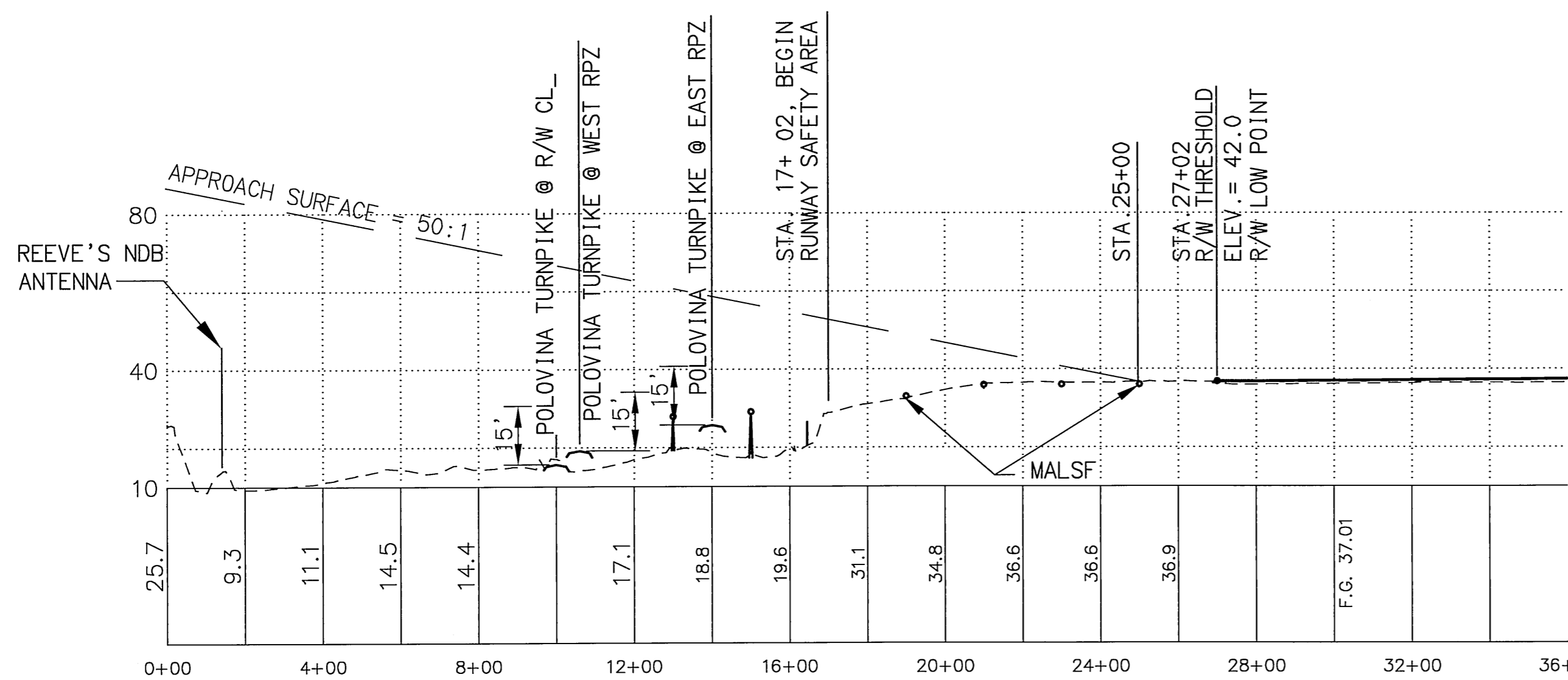
NOTE:
OBSTRUCTION CLEARANCE SLOPE IS 50:1
NO THRESHOLD SITING SURFACE OBJECT PENETRATIONS.



RUNWAY 18-36 INNER APPROACH SURFACE DATA

No.	STATION	OFFSET	OBJECT	OBJECT ELEVATION	PART 77 ELEVATION	VERTICAL CLEARANCE	AMOUNT OF PENETRATION
4	103+00	0	ANTENNA	68.5'	89'	20.5'	NONE

NOTE:
OBSTRUCTION CLEARANCE SLOPE IS 50:1
NO THRESHOLD SITING SURFACE OBJECT PENETRATIONS.



GEL	09/10/08	AS-BUILT PER PROJECT# 56948
BY	DATE	REVISIONS

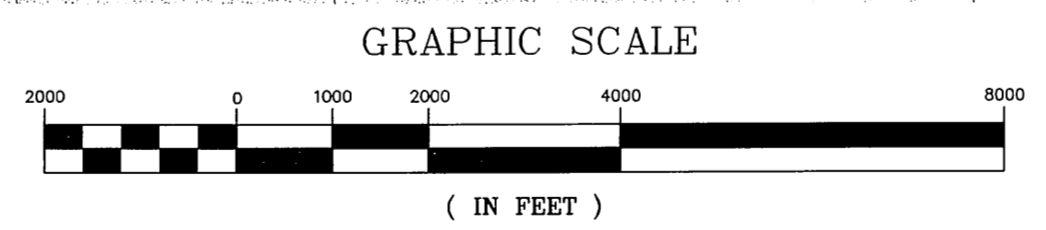
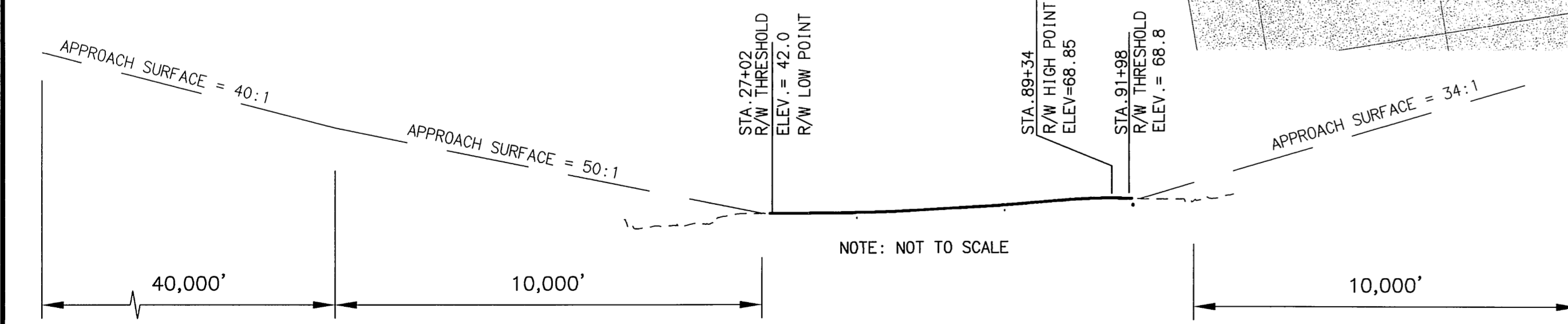
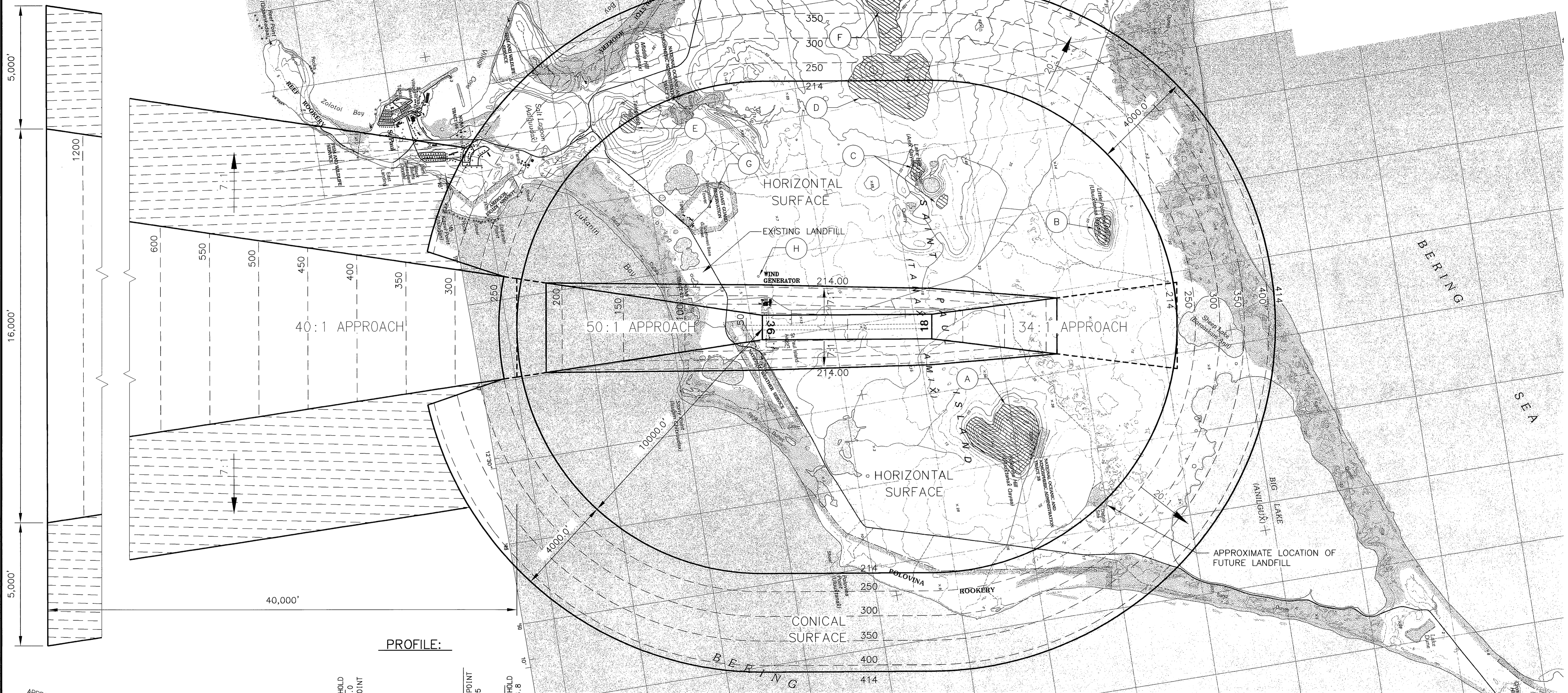
STATE OF ALASKA
**DEPARTMENT OF TRANSPORTATION
 AND PUBLIC FACILITIES**
 CENTRAL REGION

ST. PAUL AIRPORT
 AIRPORT LAYOUT PLAN
 RUNWAY 18-36
 INNER PORTION OF THE
 APPROACH SURFACES

SHEET
5
 OF
9

Date Plotted: 06/19/06
 Plot Ratio and Layout: 1=1, layout=
 File: P:\Projects\58182_Design\ALP_SIP-part17.dwg
 Designed By: WPH
 Checked By: SGO
 Drawn By: GLB

MAG. DEC. 9° 56' E
 2006 NGS



NOTES:
 1. OBSTRUCTION ELEVATIONS ARE ESTIMATED FROM MOST RECENT USGS MAPS, WHICH GIVE ELEVATIONS IN METERS.
 2. VERTICAL DATUM IS MEAN SEA LEVEL, MEASURED IN FEET.
 3. POSITION AND ELEVATION OF WIND GENERATOR SHOULD BE ACCURATELY DETERMINED BY SURVEY. TWO MORE GENERATORS ARE PLANNED.

Obstruction ID	Description	Obstruction Elevation	Surface Penetrated	Part 77 Surface Elevation	Max. Amount of Penetration	Disposition	Stage
A	TERRAIN	463'	HORIZONTAL	214'	250'	NONE	NA
B	TERRAIN	312'	HORIZONTAL	214'	99'	NONE	NA
C	TERRAIN	263'	HORIZONTAL	214'	50'	NONE	NA
D	TERRAIN	329'	HORIZONTAL-CONICAL	214'-268'	104'	NONE	NA
E	TERRAIN	230'	HORIZONTAL-CONICAL	214'-230'	17'	NONE	NA
F	TERRAIN	493'	CONICAL	268'-414'	99'	NONE	NA
G	NAV. TOWER	662'	HORIZONTAL	214'	449'	NONE	NA
H	WIND GENERATOR	215'±	HORIZONTAL	214'	0-10'	NOTE 3	NA

GEL	09/10/08	AS-BUILT PER PROJECT# 56948
BY	DATE	REVISIONS

STATE OF ALASKA
**DEPARTMENT OF TRANSPORTATION
 AND PUBLIC FACILITIES**
 CENTRAL REGION

ST. PAUL AIRPORT

AIRPORT LAYOUT PLAN

AIRPORT AIRSPACE

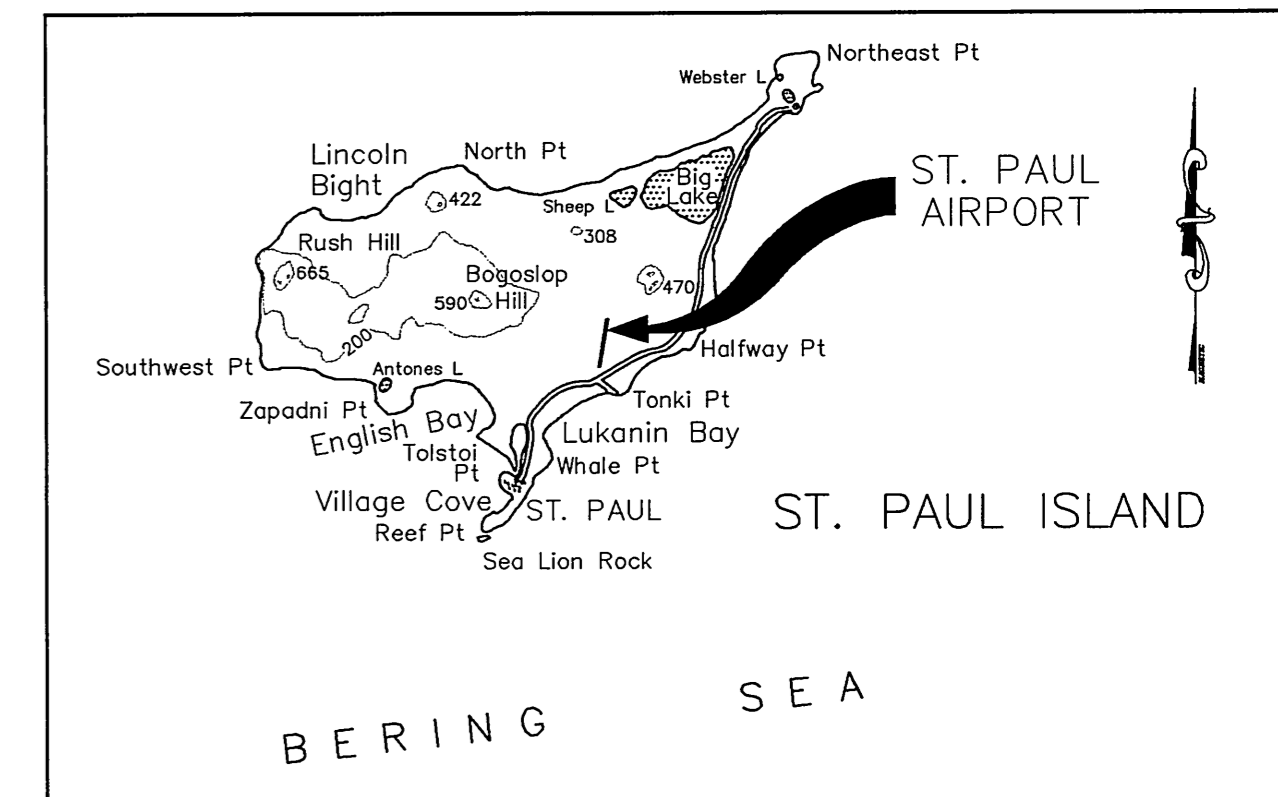
SHEET
 6
 OF
 9

NOTES:

- QUITCLAIM DEED FOR THE SURFACE ESTATE FOR TRACT II PARCEL B AND C FROM TANADGUSIX CORP ON 10/25/90. QUITCLAIM DEED FOR SUBSURFACE ESTATE FOR TRACT II PARCEL B FROM ALEUT CORP. ON 10/03/90.
- WARRANTY DEED FOR SURFACE ESTATE FOR TRACT II PARCEL A, AVIGATION & HAZARD EASEMENT FOR SURFACE ESTATE FOR TRACT VI, AND NON-DEVELOPMENT COVENANT FOR SURFACE ESTATE FOR TRACT VII, RECEIVED FROM TANADGUSIX CORP. 2/4/92. WARRANTY DEED FOR SUBSURFACE ESTATE FOR TRACT II PARCEL A, AVIGATION & HAZARD EASEMENT FOR SURFACE ESTATE FOR TRACT VI, AND NON-DEVELOPMENT COVENANT FOR SUBSURFACE ESTATE FOR TRACT VII RECEIVED FROM THE ALEUT CORPORATION 1/31/92.
- WARRANTY DEED FOR SURFACE ESTATE FOR TRACT IX RECEIVED FROM TANADGUSIX CORPORATION 8/6/93. WARRANTY DEED FOR SUBSURFACE ESTATE FOR TRACT IX RECEIVED FROM THE ALEUT CORPORATION 8/8/93.
- SEE ASLS 89-101 (Plat #95-40, Aleutian Island Recording District) FOR ADDITIONAL INFORMATION RELATING TO THIS AIRPORT SURVEY.
- ALL BEARINGS SHOWN ARE LOCAL PLANE BEARINGS, BASED ON THE MEAN GEODETIC BEARING BETWEEN RUNWAY CENTERLINE MONUMENTS SET THIS SURVEY. THE BEARING WAS COMPUTED USING GLOBAL POSITIONING SYSTEM (GPS) TECHNOLOGY, HOLDING STATION "SOUTHWEST BASE RESET".
- ELEVATION OF BENCHMARK SHOWN WAS DETERMINED TO BE 29.25 BY A LEVEL SURVEY TIE TO OTHER BENCH MARKS NEAR TOWN. DATUM IS MEAN SEA LEVEL. THIS MONUMENT WILL BE REMOVED, ALONG WITH CONCRETE SLAB, AS PART OF A 2004 CONSTRUCTION PROJECT.
- A NEW BENCH MARK, No. 406, WAS ESTABLISHED IN 2003. IT IS A BRASS CAP SET IN CONCRETE, LABELED ST. PAUL 1. ITS ELEVATION IS 61.77 FT. ABOVE MEAN SEA LEVEL. REFER TO THE SURVEY CONTROL DIAGRAM IN AKSAS PROJECT No. 55768 FOR INFORMATION REGARDING ST. PAUL 1.

TRACT	PARCEL	ACREAGE		GRANTOR/GRANTEE	INTEREST	ACQUIRED UNDER A.I.P. #	DATE ACQUIRED	
		TAKE	REMAINING					
I		87.29	A	LARGE	STATE OF ALASKA	FEE SIMPLE (QCD)	3-02-0277-01	1/03/89
II	A	300.30		LARGE	TDX/ALEUT	FEE SIMPLE	3-02-0277-01	SEE NOTE 2
	B	0.89		LARGE	TDX/ALEUT	FEE SIMPLE	3-02-0277-02	SEE NOTE 1
	C	0.27		LARGE	TDX/ALEUT	FEE SIMPLE	3-02-0277-03	SEE NOTE 1
III		19.30		19.30	U.S.A. (NOAA)	A & H EASEMENT	3-02-0277-01	3/05/96
V		0		2.40	TDX/ALEUT			N/A
VI		23.12		LARGE	TDX/ALEUT	A & H EASEMENT	3-02-0277-01	SEE NOTE 2
VII		3.21		LARGE	ALEUT	NON-DEVELOPMENT COVENANT	3-02-0277-01	SEE NOTE 2
VIII		0.99		0.99	U.S.A. (NOAA)	A & H EASEMENT	3-02-0277-01	1/03/89
IX		24.27		LARGE	TDX/ALEUT	FEE SIMPLE	3-02-0277-01	SEE NOTE 3
X	A	1.31		300.30	DOT/PF TO CITY OF ST.PAUL	PUBLIC ROAD & UTILITY EASEMENT		3/07/96
	B	1.13		300.30	DOT/PF TO CITY OF ST.PAUL	PUBLIC ROAD & UTILITY EASEMENT		3/07/96
XI		1.72		19.30	U.S.A. (NOAA) TO CITY OF ST.PAUL	ROAD EASEMENT		3/07/96
XII		6.16		LARGE	TDX/ALEUT	FEE SIMPLE		N/A
E-1		0.24		LARGE	TDX	EASEMENT	3-02-0277-05	8/09/02

* EASEMENT REALIGNING VILLAGE ROAD (POLOVINA TURNPIKE) GRANTED TO CITY OF ST. PAUL BY TDX CORPORATION AND NOAA.



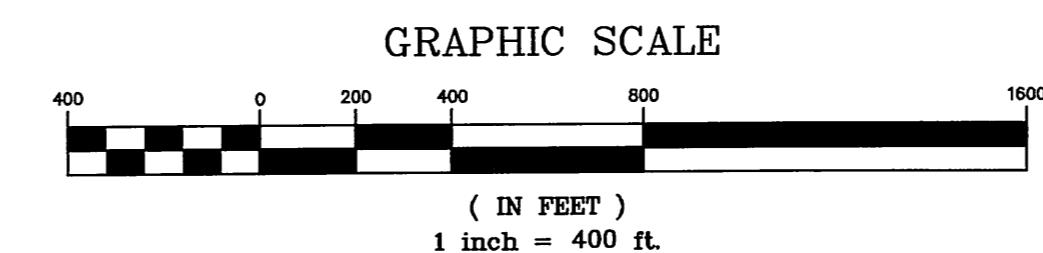
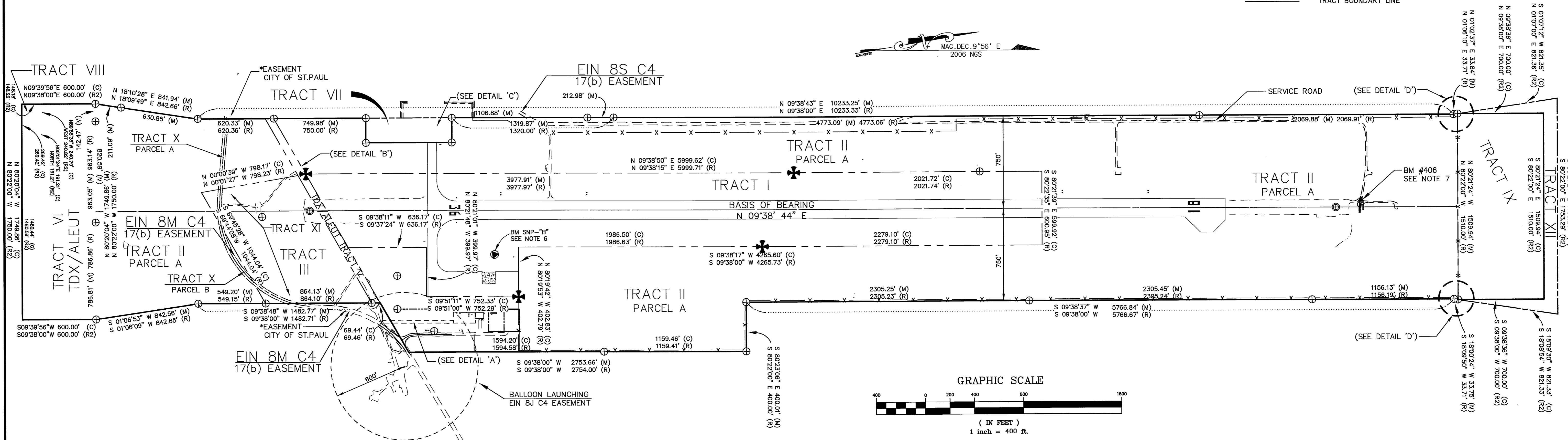
VICINITY MAP

Airport located within T 35 S, R 131 W SECTIONS 8 & 17 SEWARD MERIDIAN, ALASKA U.S.G.S. PRIBILOF ISLANDS, AK

LEGEND

- FOUND GOVERNMENT MONUMENT
- NGS CONTROL STATION
- FOUND PRIMARY MONUMENT
- FOUND SECONDARY MONUMENT
- SET 2" ALCAP ON 5/8" X 30" REBAR, MARKED AS SHOWN
- SET CENTERLINE MONUMENT
- SET SECONDARY CORNER
- PROPERTY BOUNDARY
- EASEMENT LINE
- RUNWAY CENTERLINE
- TRACT BOUNDARY LINE

Date Plotted: 06/19/08
 Plot Ratio and Layout: 1" = 400'
 File: P:\Projects\058182\Design\ALP_SIP-PropPlan.dwg
 Designed By: WPH
 Checked By: SGO
 Drawn By: GJB



SEE PROPERTY PLAN SHEET 2 OF 2 FOR DETAILS

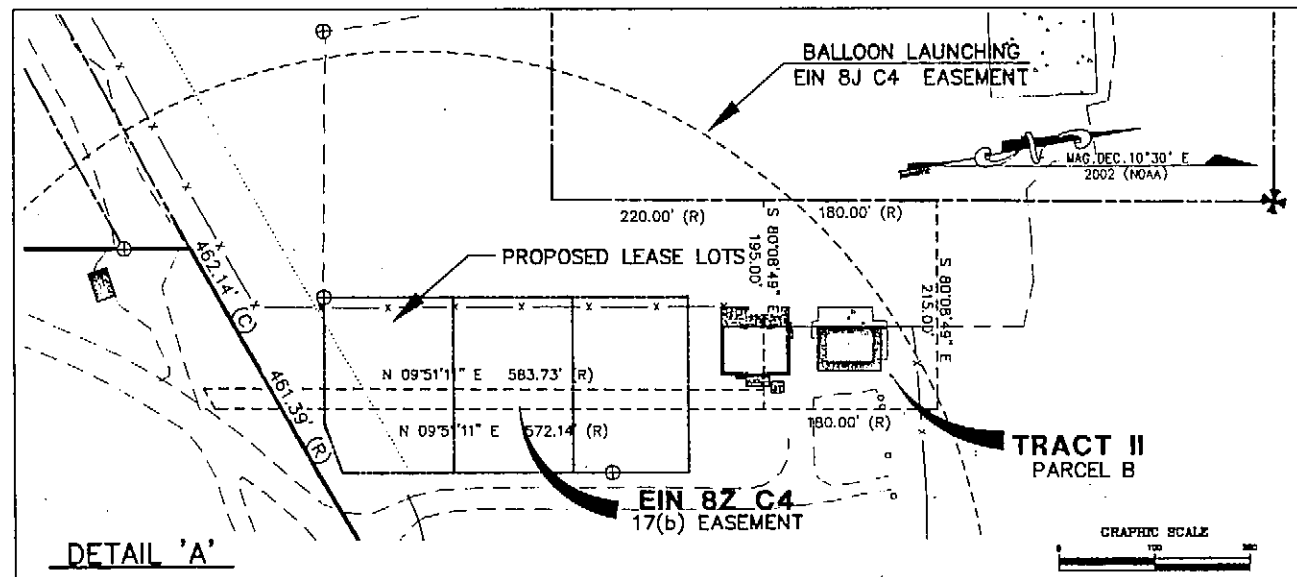
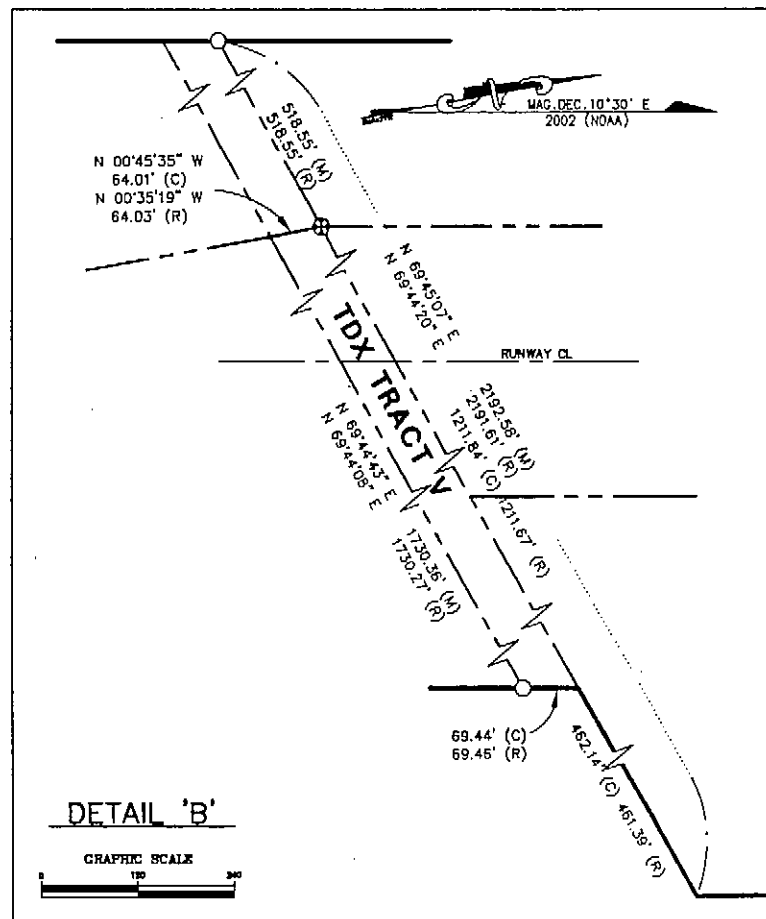
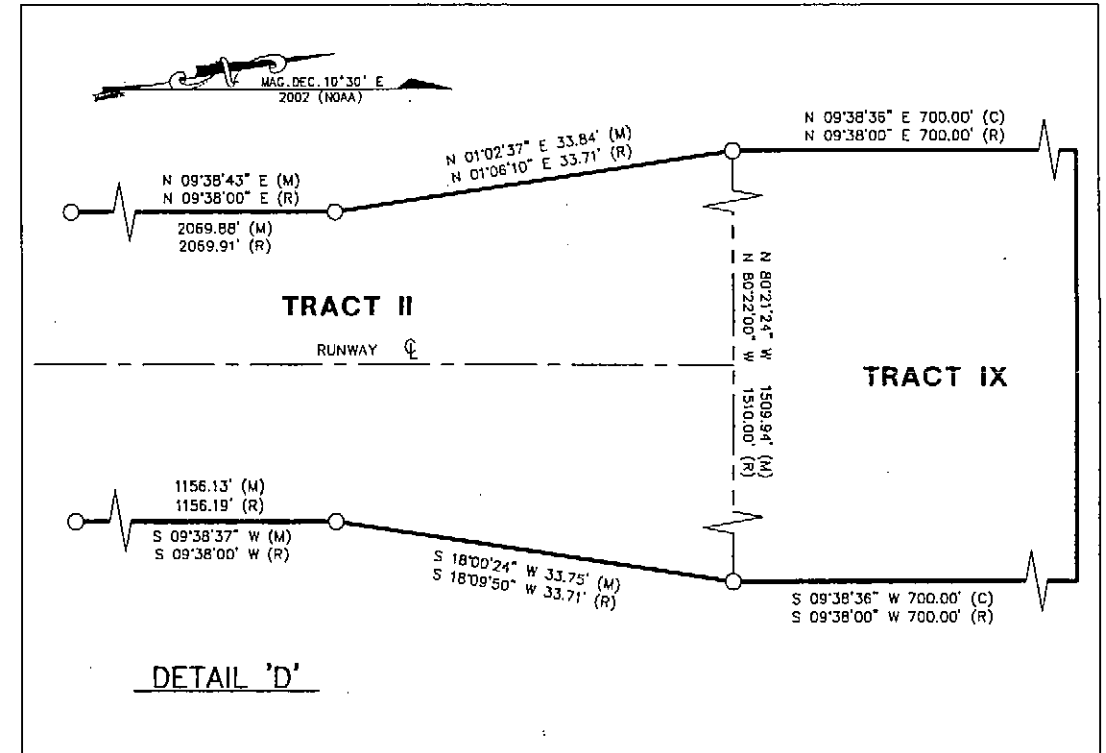
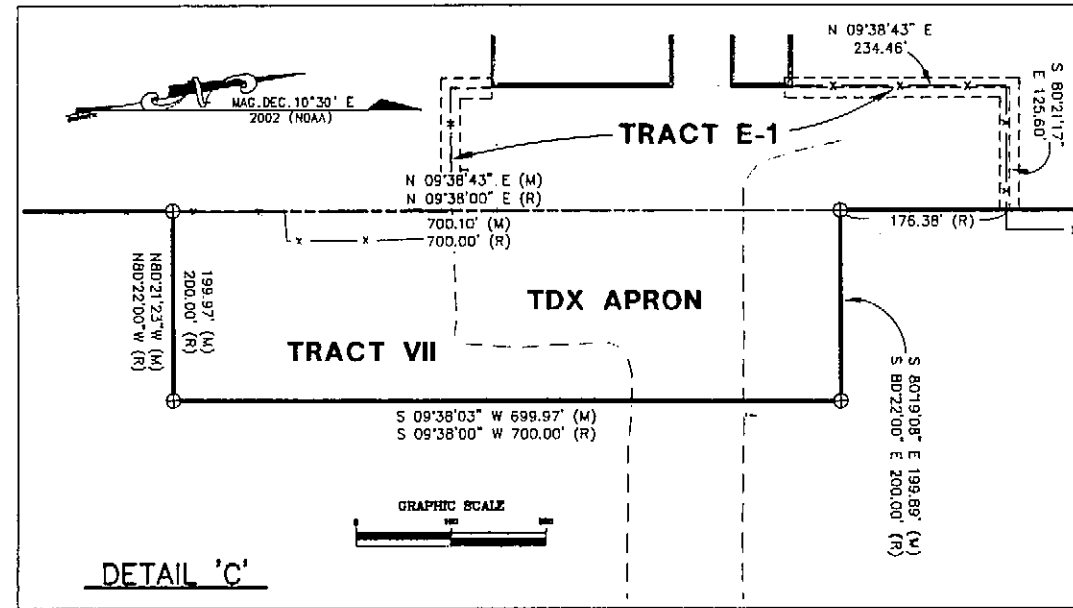
STATE OF ALASKA DEPARTMENT OF TRANSPORTATION AND PUBLIC FACILITIES CENTRAL REGION		ST. PAUL AIRPORT AIRPORT LAYOUT PLAN PROPERTY PLAN PROPERTY PLAN SHEET 1 OF 2	SHEET 7 OF 9
GEL	09/10/08	AS-BUILT PER PROJECT# 56948	
BY	DATE	REVISIONS	

NOTES:

- QUITCLAIM DEED FOR THE SURFACE ESTATE FOR TRACT II PARCEL B AND C FROM TANADGUSIX CORP ON 10/25/90. QUITCLAIM DEED FOR SUBSURFACE ESTATE FOR TRACT II PARCEL B FROM ALEUT CORP. ON 10/03/90.
- WARRANTY DEED FOR SURFACE ESTATE FOR TRACT II PARCEL A, AVIGATION & HAZARD EASEMENT FOR SURFACE ESTATE FOR TRACT VI, AND NON-DEVELOPMENT COVENANT FOR SURFACE ESTATE FOR TRACT VII, RECEIVED FROM TANADGUSIX CORP. 2/4/92. WARRANTY DEED FOR SUBSURFACE ESTATE FOR TRACT II PARCEL A, AVIGATION & HAZARD EASEMENT FOR SUBSURFACE ESTATE FOR TRACT VI, AND NON-DEVELOPMENT COVENANT FOR SUBSURFACE ESTATE FOR TRACT VII RECEIVED FROM THE ALEUT CORPORATION 1/31/92.
- WARRANTY DEED FOR SURFACE ESTATE FOR TRACT IX RECEIVED FROM TANADGUSIX CORPORATION 8/6/93. WARRANTY DEED FOR SUBSURFACE ESTATE FOR TRACT IX RECEIVED FROM THE ALEUT CORPORATION 8/8/93.
- SEE ASLS 89-101 (Plot #95-40, Aleutian Island Recording District) FOR ADDITIONAL INFORMATION RELATING TO THIS AIRPORT SURVEY.
- ALL BEARINGS SHOWN ARE LOCAL PLANE BEARINGS, BASED ON THE MEAN GEODETIC BEARING BETWEEN RUNWAY CENTERLINE MONUMENTS SET THIS SURVEY. THE BEARING WAS COMPUTED USING GLOBAL POSITIONING SYSTEM (GPS) TECHNOLOGY, HOLDING STATION "SOUTHWEST BASE RESET".

LEGEND

- ⊕ FOUND BLM MONUMENT
- ⊙ FOUND BENCHMARK
- FOUND OTHER
- FOUND REBAR
- SET ALCAP
- PROPERTY BOUNDARY
- - - EASEMENT LINE
- - - RUNWAY CENTERLINE
- - - INTERIOR TRACT LINE
- (M) MEASURED THIS SURVEY
- (R) RECORD PER PLAT 95-40
- (R2) ST PAUL ISLAND AIRPORT PROPERTY PLAN, DATED NOVEMBER 15, 1988
- (C) COMPUTED THIS SURVEY



DETAILS ARE NOT TO SCALE, UNLESS SHOWN OTHERWISE

Date Plotted: 04/13/04
 Plot Title and Layout: I-1, Airport
 File: P:\Projects\0561183\Drawn\ALP\ALP-PropPlan.dwg
 Drawn By: GLB
 Checked By: BPH
 WPH

AIRPORT LAYOUT PLAN CONDITIONAL APPROVAL
 SUBJECT TO ALP APPROVAL LETTER DATED 5/2/04
 By: *[Signature]* DATE: 5/2/04
 FAA, AIRPORTS DIVISION
 ALASKAN REGION, AAL-800
 F.A.A. AIRSPACE REVIEW NUMBER: 03-AAL-174-NRA

BY	DATE	REVISIONS

STATE OF ALASKA
DEPARTMENT OF TRANSPORTATION AND PUBLIC FACILITIES
 CENTRAL REGION
 APPROVED: *[Signature]* DESIGN SECTION CHIEF
 APPROVED: *[Signature]* PROJECT MANAGER
 STEPHEN W. RYAN, P.E.
 HARVEY M. DOUTHETT, P.E.

DATE 04/13/04
 DESIGN BCH
 DRAWN GLB
 CHECKED *[Signature]*

ST. PAUL AIRPORT
 AIRPORT LAYOUT PLAN
 PROPERTY PLAN
 PROPERTY PLAN SHEET 2 OF 2

SHEET
 8
 OF
 9