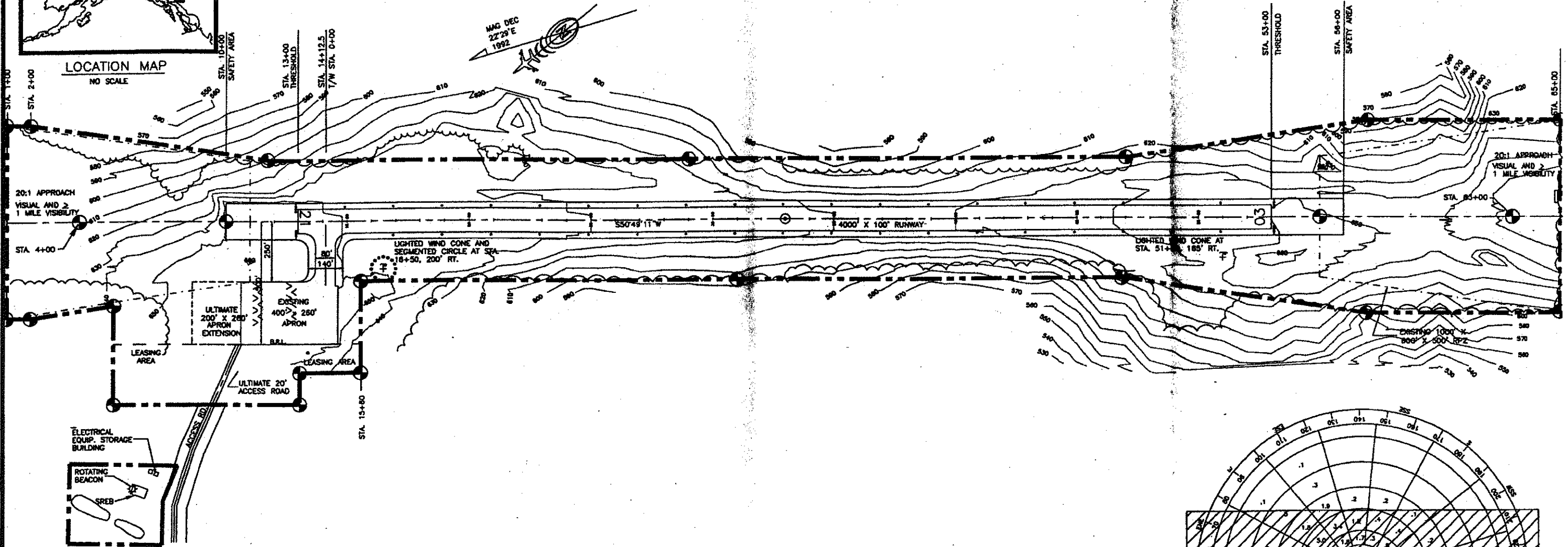


LOCATION MAP
NO SCALE

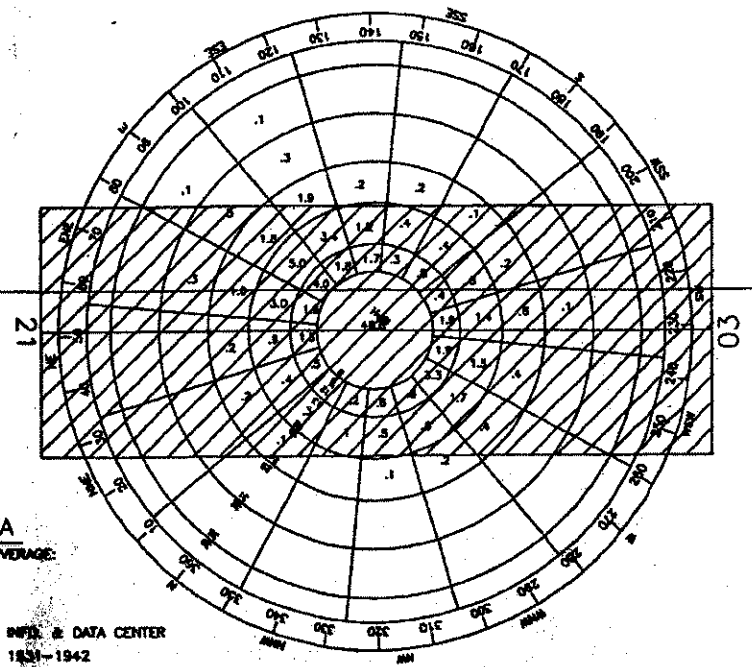
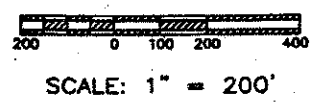


AIRPORT DATA		
	EXISTING	ULTIMATE
AIRPORT ELEVATION(MSL)	854'	SAME
AIRPORT REFERENCE CODE	8-4	SAME
MEAN MAX. ONLY TEMP. HOTTEST MONTH (JULY)	70.5°F	SAME
TAXIWAY LIGHTING	MTL	SAME
RAMP LIGHTING	NONE	SAME
AIRPORT AND TERMINAL MAWAIDS	NONE	SAME
COMMUNICATION AIDS	NONE	SAME
AIRPORT REFERENCE POINT (ARP)	LAT. 64°43'38"N LONG. 155°28'12"W	SAME
THRESHOLD 1: STA. 53+00	LAT. 64°43'25.53"N LONG. 155°28'47.23"W	SAME
THRESHOLD 2: STA. 13+00	LAT. 64°43'50.41"N LONG. 155°27'35.84"W	SAME

RUNWAY DATA		
	EXISTING	ULTIMATE
EFFECTIVE GRADIENT	0.25%	SAME
Z WIND COVERAGE	96%	SAME
INSTRUMENT RUNWAY	N/A	SAME
RUNWAY SURFACE TYPE	GRVEL	SAME
PAVEMENT STRENGTH	N/A	SAME
APPROACH SURFACES	20:1	SAME
RUNWAY LIGHTING	MRL	SAME
RUNWAY MARKING	NONE	SAME
NAVIGATION AIDS	ROT BEACON	SAME
R/W DIMENSIONS	4000' X 100'	SAME
R/W SAFETY AREA	4800' X 150'	SAME
R/W OBST FREE AREA (OBFA)	4800' X 200'	SAME
T/W DIMENSIONS	90' X 200'	SAME
T/W SAFETY AREA	140' X 200'	SAME

LEGEND		
	EXISTING	ULTIMATE
PROPERTY LINE	---	SAME
BUILDING RESTRICTION LINE (B.R.L.)	---	SAME
DEVELOPMENT	---	SAME
WIND CONE & SEGMENTED CIRCLE	☉	SAME
WIND CONE ONLY	☉	SAME
BUILDINGS	▭	SAME
ROADWAYS	---	SAME
RPE	---	SAME
AIRPORT REFERENCE POINT	○	TRKELINE
ROTATING BEACON	☉	THRESHOLD
ANTENNAE/TOWERS	△	OVERHEAD POWER

NONSTANDARD CONDITIONS			
ITEM	STANDARD	EXISTING	ULTIMATE
RUNWAY SIDE SLOPES	4:1	3:1	3:1



DESIGN	CM
DRAWN	CAT
CHECKED	POW

BY	DATE	REVISIONS
	11/29/00	FAA APPROVED
	8/28/92	FAA APPROVED
	5/13/99	AS-BUILT

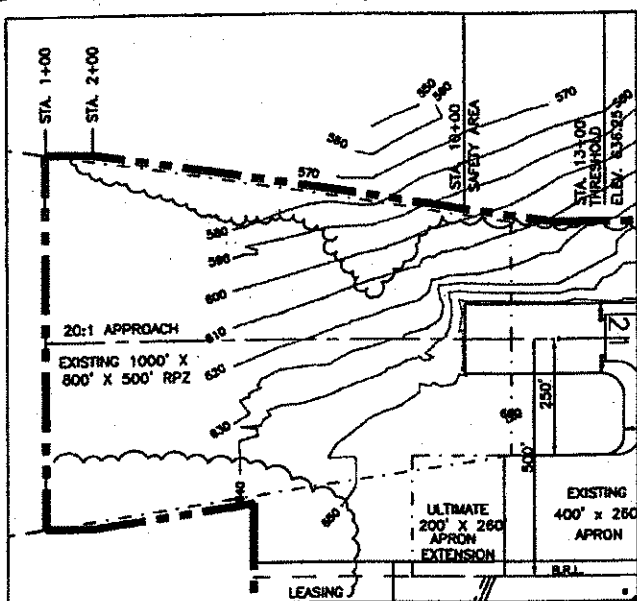
STATE OF ALASKA
DEPARTMENT OF TRANSPORTATION AND PUBLIC FACILITIES
NORTHERN REGION-DESIGN AND ENGINEERING SERVICES

APPROVED
Patricia D. Miller
PATRICIA D. MILLER, P.E.
DATE: 12-27
DESIGN GROUP CHIEF

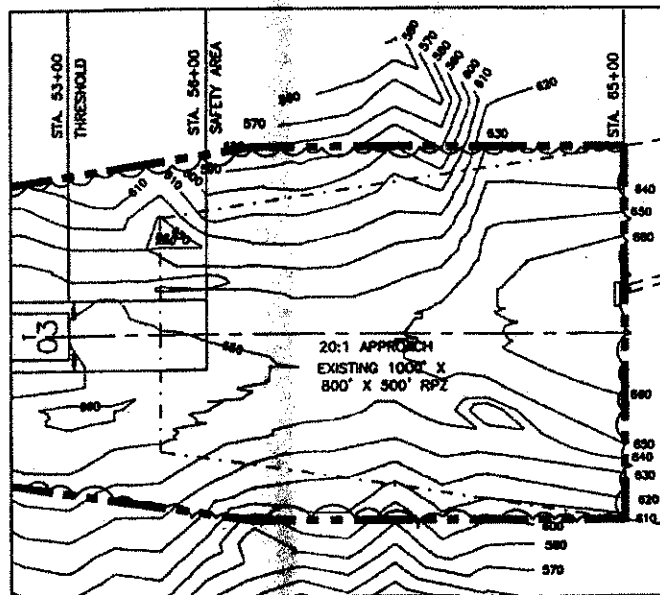
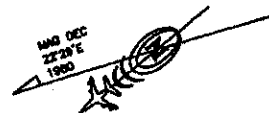
REVISED AIRPORT LAYOUT PLAN APPROVED
BY LETTER DATED: 11/29/00
DAVID S. STELLING
AIRPORTS DIVISION,
ALASKAN REGION, AAL-620
AIRSPACE REVIEW #92AAL-137NRA

THIS ALP WAS PREPARED FROM AS-BUILTS DATED 10/11/93 AND SUPERSEDES ALP SIGNED 8-12-92 AND FAA APPROVED 8-26-92.
THIS ALP IS BASED ON STANDARDS IN EFFECT AT THE TIME OF ORIGINAL FAA APPROVAL.

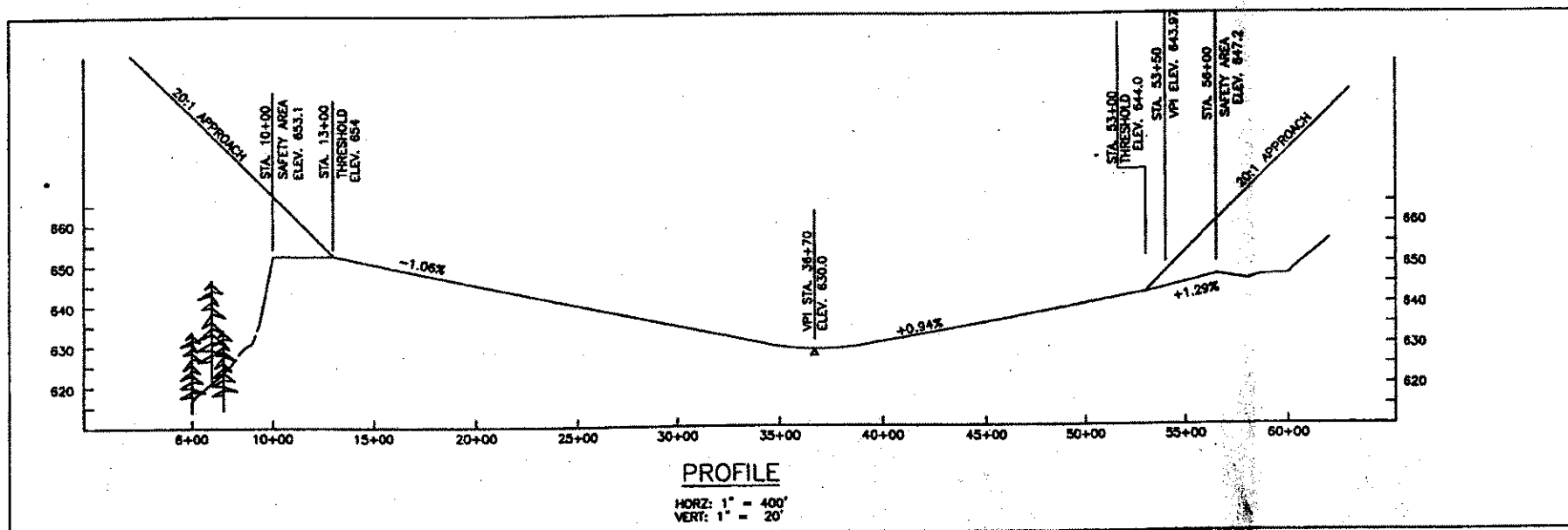
RUBY AIRPORT
AIRPORT LAYOUT PLAN



RPZ 21

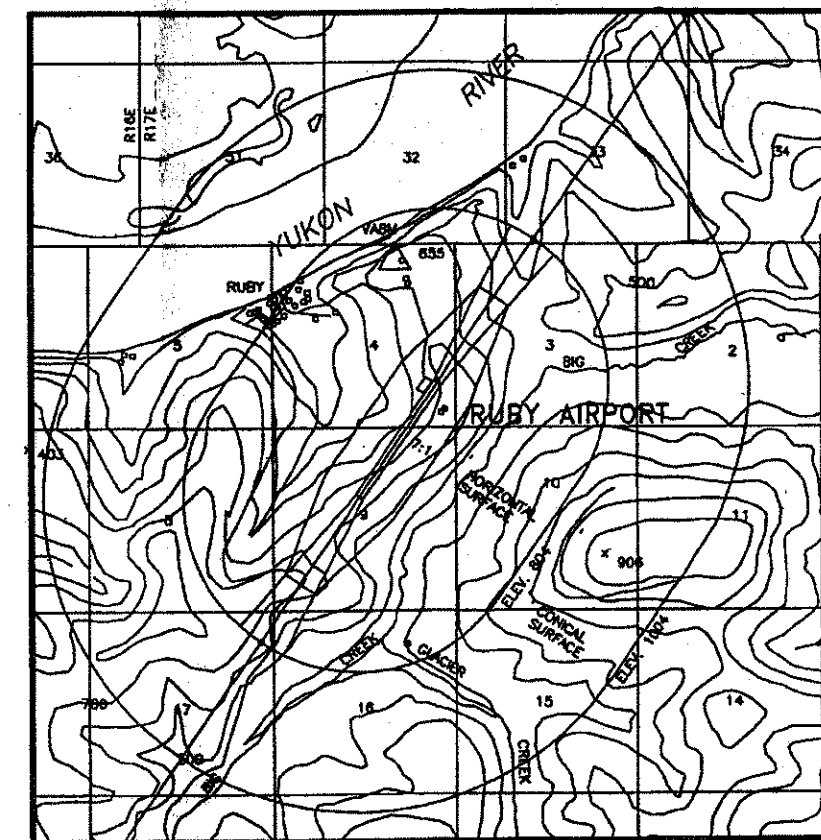


RPZ 03



PROFILE

HORZ: 1" = 400'
VERT: 1" = 20'



VICINITY MAP AND AIRSPACE PLAN

S 3, 4, 9, 10, R17E
T9S, KATEEL RIVER MERIDIAN
USGS RUBY (C-3, C-5, D-3, D-8)

DESIGN	CM
DRAWN	CAT
CHECKED	DOM

BY	DATE	REVISIONS
	11/29/00	FAA APPROVED
	8/26/92	FAA APPROVED
	5/13/99	AS-BUILT

STATE OF ALASKA
DEPARTMENT OF TRANSPORTATION AND PUBLIC FACILITIES
NORTHERN REGION-DESIGN AND ENGINEERING SERVICES

APPROVED *Patricia D. Miller* DATE 5-18-99
PATRICIA D. MILLER, P.E. DESIGN GROUP CHIEF

REVISED AIRPORT LAYOUT PLAN APPROVED
BY LETTER DATED: 11/29/00
DAVID S. STELLING
AIRPORTS DIVISION,
ALASKAN REGION, AAL-620
AIRSPACE REVIEW #92AAL-137NRA

THIS ALP IS BASED ON STANDARDS IN EFFECT AT THE TIME OF ORIGINAL
FAA APPROVAL.

RUBY AIRPORT
AIRPORT LAYOUT PLAN

SHEET
2 OF
2