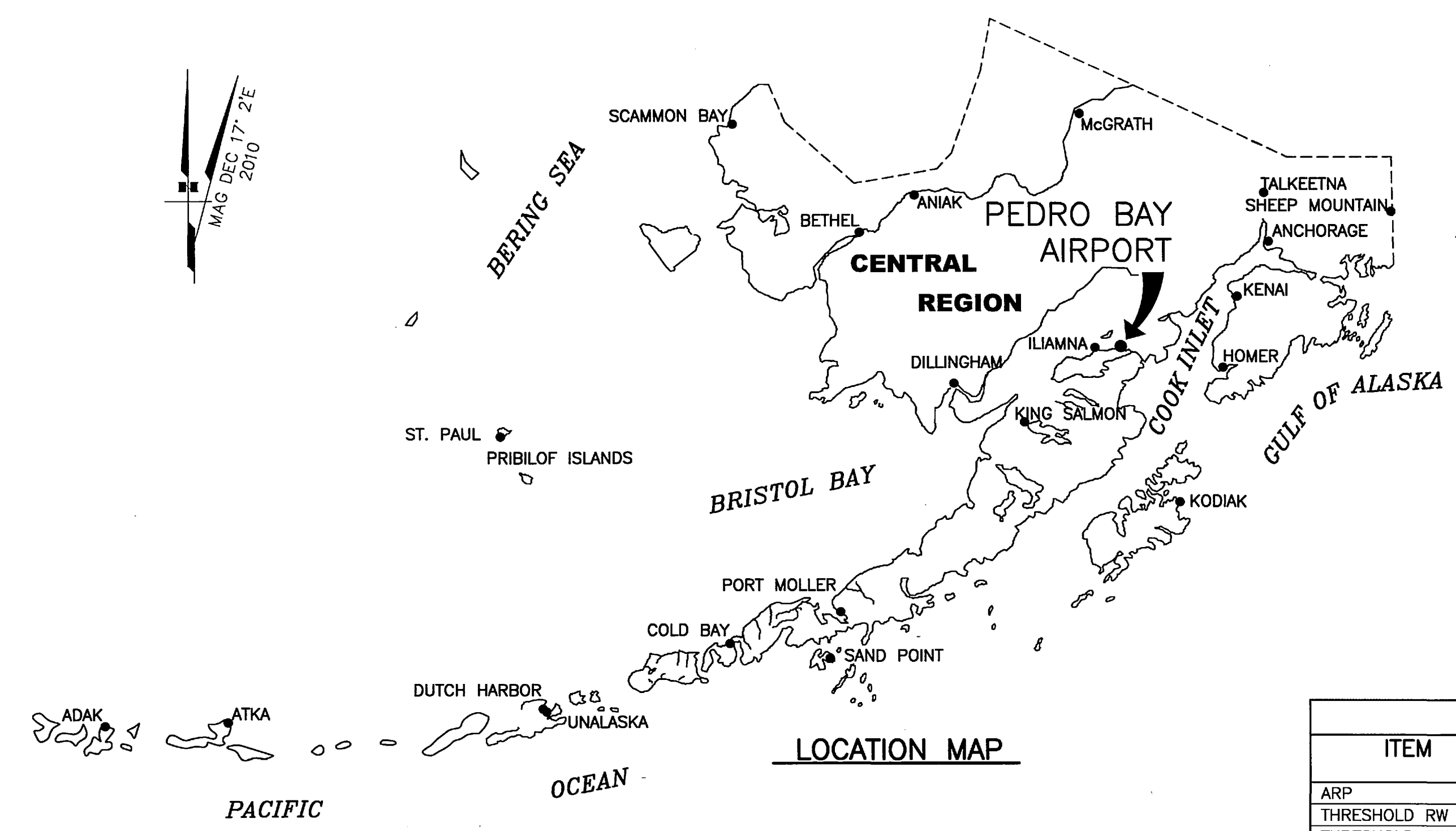


FILE No.: 232-101-1
 Designed By: nilewilyn
 Drawn By: mbauer
 Checked By: bhanson
 Date Plotted: 3/26/2010, 11:32 AM
 Layout Name: DATA (1)
 File Name: P:\Projects\059422\059422S\PEDRO BAY\ALP\ALP_PEDRO_BAY.dwg



LEGEND		
ITEM	EXISTING	ULTIMATE
AIRPORT REFERENCE POINT (ARP)		
ANTENNA		
BLUFF		
BUILDINGS		
BUILDING RESTRICTION LINE (BRL)		
FENCE		
PAPI		
PROPERTY LINE		
REIL		
ROADWAYS		
ROTATING BEACON		
SHORELINE		
SURVEY MONUMENT		
THRESHOLD MARKERS/LIGHTS		
TOPOGRAPHIC CONTOURS		
TREE (LARGE SINGLE)		
TREELINE		
VASI		
WIND CONE		
WIND CONE AND SEGMENTED CIRCLE		

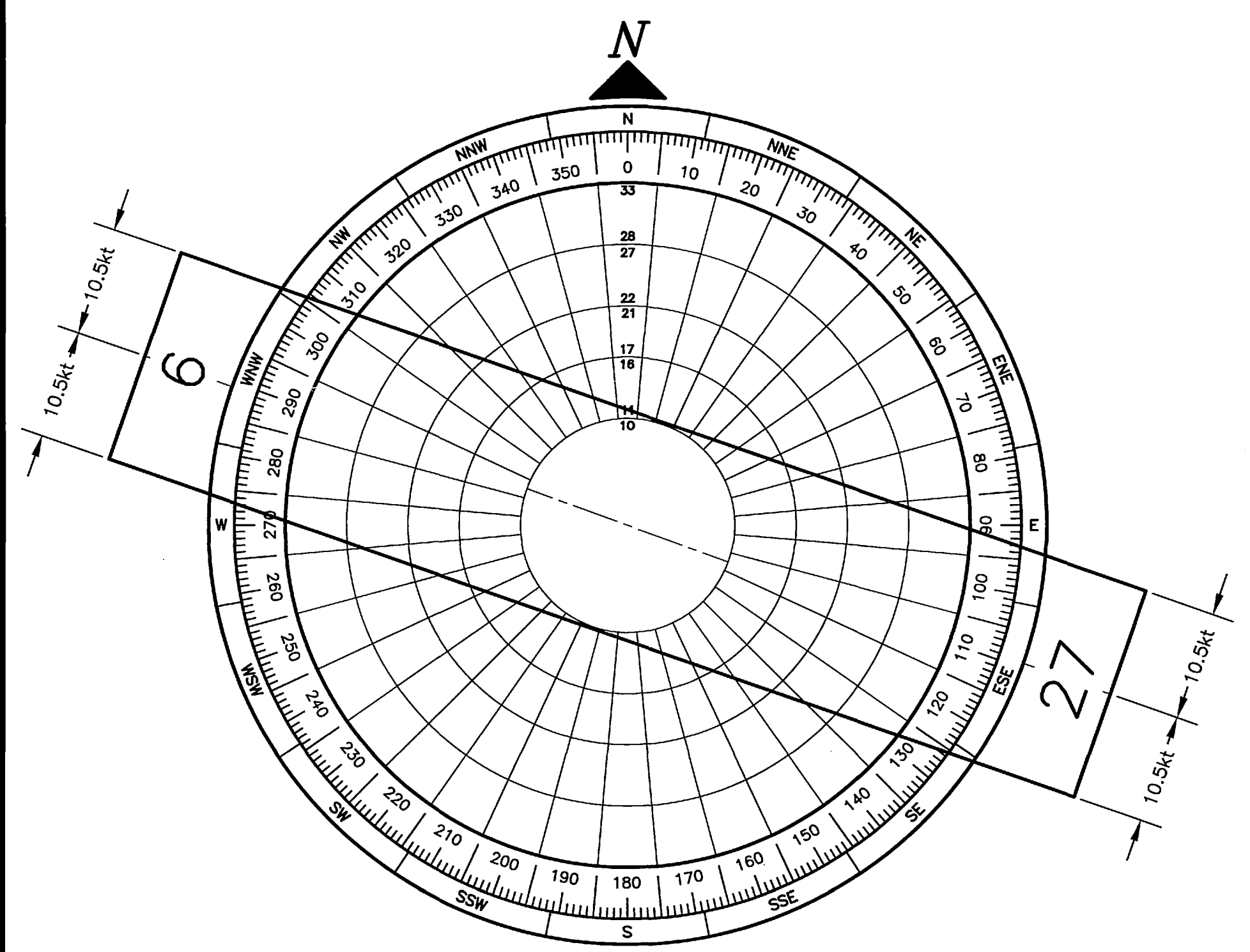
GEOGRAPHIC COORDINATES TABLE				
ITEM	EXISTING LATITUDE	EXISTING LONGITUDE	ULTIMATE LATITUDE	ULTIMATE LONGITUDE
ARP	59°47'49.04"N	154°07'47.92"W		
THRESHOLD RW 9	59°47'54.25"N	154°08'15.35"W		
THRESHOLD RW 27	59°47'43.83"N	154°07'20.48"W		

AIRPORT DATA		
ITEM	EXISTING	ULTIMATE
ICAO IDENTIFIER	NONE	
NATIONAL AIRPORT IDENTIFIER	4K0	
FAA SITE NUMBER	50587.7*A	
AIRPORT ELEVATION NAVD88	78.4'	
AIRPORT REFERENCE CODE	B-1	
MEAN MAX. TEMPERATURE, HOTTEST MONTH	66°F, JULY	
AIRPORT AND TERMINAL NAVIGATION AIDS	ROTATING BEACON	
TAXIWAY LIGHTING/MARKING	MITL	
OBSTRUCTION SURVEY SOURCE & TYPE	NONE	
MAGNETIC DECLINATION, YEAR, RATE OF CHANGE	17°2'E / 2010	-0°16'(W) / YEAR

RUNWAY 9/27 DATA			
ITEM	EXISTING	NEAR TERM	ULTIMATE
RUNWAY TYPE UTILITY OR OTHER THAN UTILITY	UTILITY		
FAR PART 77 APPROACH CATEGORY (V, NPI, P)	V / V		
APPROACH SURFACES	20:1 / 20:1		
VISIBILITY MINIMUM	1 SM		
RUNWAY SURFACE	GRAVEL		
PAVEMENT STRENGTH SW,DW,DTW,DDTW x1000lbs	N/A		
AIRCRAFT APPROACH CATEGORY	B		
AIRPLANE DESIGN GROUP	I		
MEAN GEODETIC BEARING	N69°20'56"W		
EFFECTIVE GRADE	0.56%		
TOUCHDOWN ELEVATION NAVD88 (ESTIMATED)	78.4' / 78.4'		
RUNWAY DIMENSIONS	60' x 3000'		
RUNWAY SAFETY AREA (RSA) DIMENSIONS	120' x 3480'		
LENGTH BEYOND R/W END	240' / 240'		
RUNWAY PROTECTION ZONE (RPZ) DIMENSIONS	500' x 700' x 1000'		
RUNWAY OBJECT FREE AREA (ROFA) DIMENSIONS	250' x 3480'		
LENGTH BEYOND R/W END OR STOPWAY	240' / 240'		
RUNWAY OBSTACLE FREE ZONE (ROFZ) DIMENSIONS	250' x 3400'		
RUNWAY LIGHTING	MIRL		
RUNWAY MARKING TYPE	NONE		
RUNWAY VISUAL APPROACH AIDS	NONE		

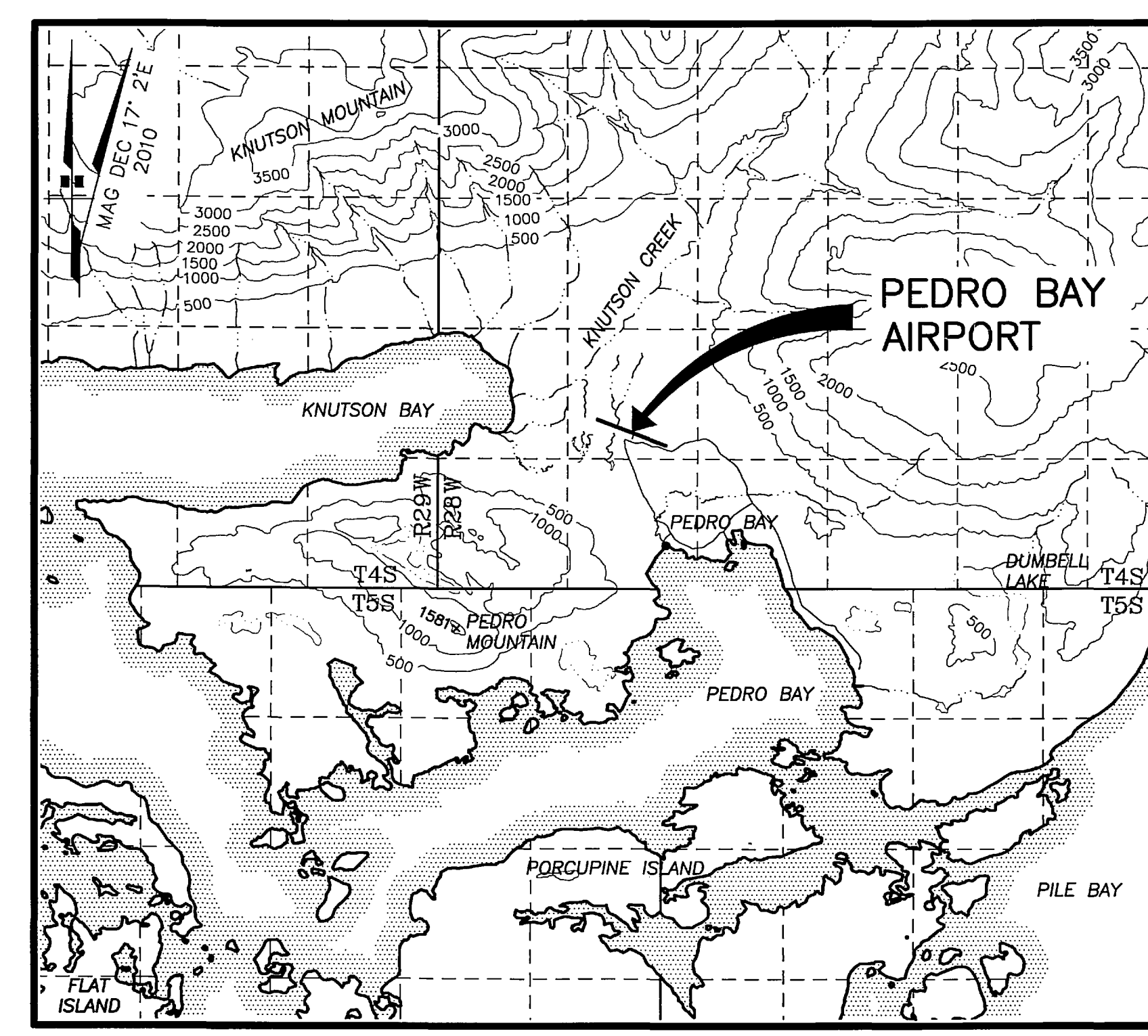
NOTES

1. THE INFORMATION SHOWN HEREON IS BASED ON A FIELD SURVEY PERFORMED BY DOWL HKM ON JUNE 11, 2008.
2. THE HORIZONTAL DATUM IS NAD83(CORS96) (EPOCH:2003.0000) AS DETERMINED BY STATIC GPS OBSERVATIONS USING LEICA DUAL FREQUENCY GPS RECEIVERS AND PROCESSED USING THE NGS OPUS UTILITY. CONTROL CORS STATIONS USED FOR THE POSITION SOLUTION WERE TSEA, POT5 AND CH15.
3. THRESHOLD COORDINATES WERE DETERMINED USING A STATIC GPS NETWORK. THE TOPOGRAPHIC MAPPING IN THE AIRPORT VICINITY WAS DIGITIZED FROM U.S.G.S. QUAD ILIAMNA (C-3,C-4,D-3,D-4).

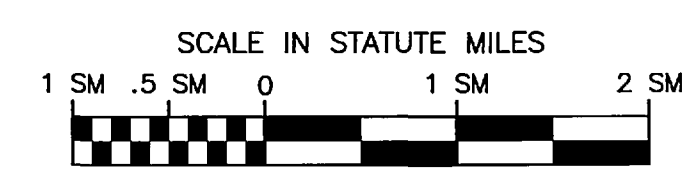


WIND DATA TABLE				
RUNWAY	10.5 kt	13 kt	16 kt	20 kt
9/27				

* WIND DATA NOT AVAILABLE



VICINITY MAP
 SEC. 29, T 4 S, R 28 W,
 SEWARD MERIDIAN
 U.S.G.S. ILIAMNA (C-3,C-4,D-3,D-4), ALASKA

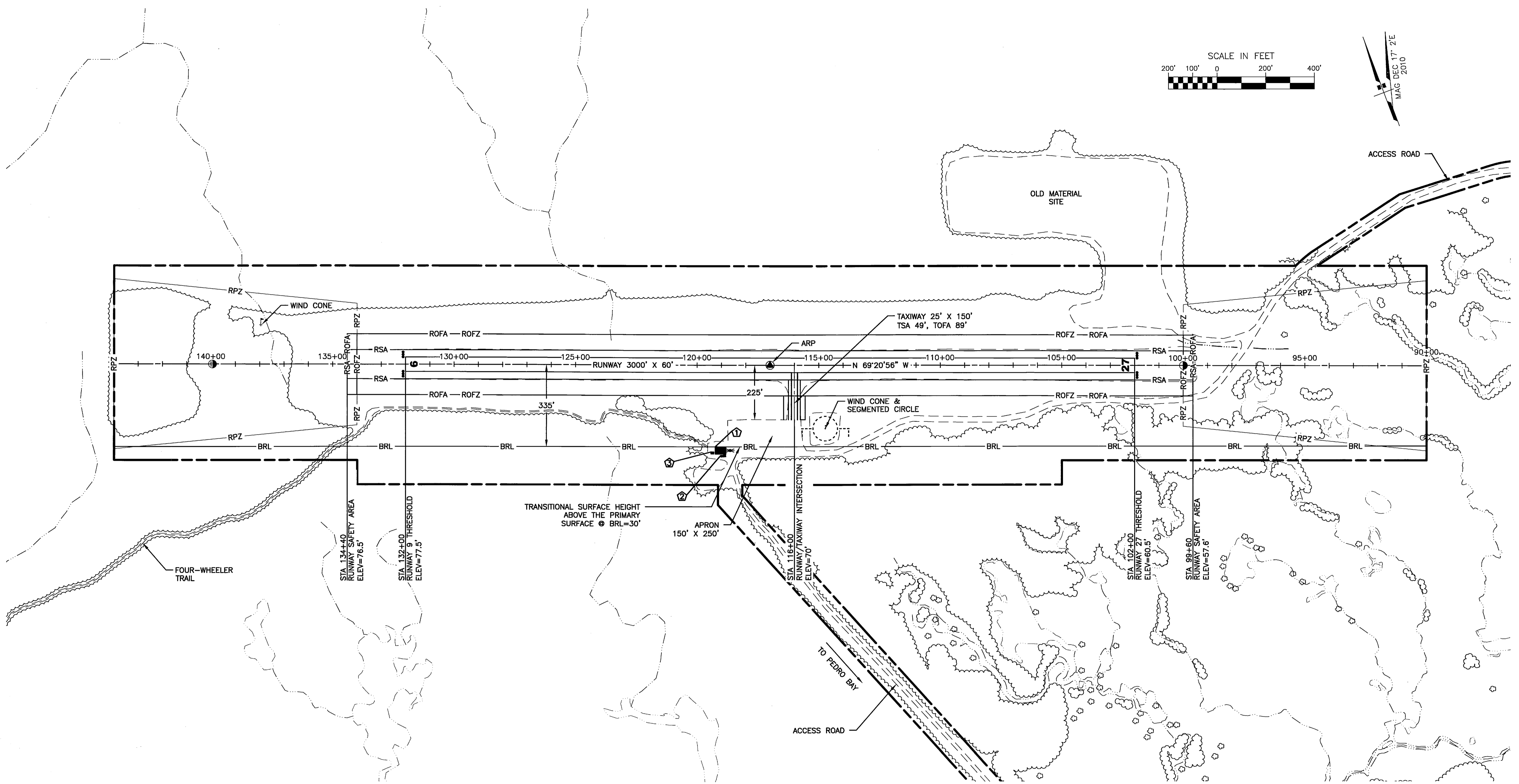
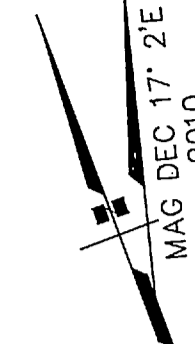
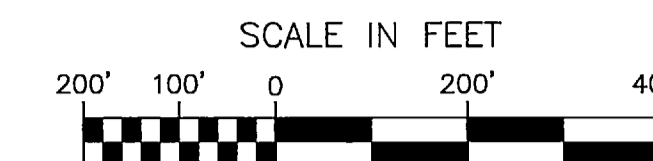


DRAWING INDEX	
SHT #	TITLE
1	DATA
2	EXISTING LAYOUT
3	EXISTING INNER PORTION OF THE APPROACH SURFACE
4	AIRPORT AIRSPACE, 14 CFR, PART 77
5	AIRPORT PROPERTY MAP PAGE 1
6	AIRPORT PROPERTY MAP PAGE 2

BY: _____	DATE: _____	REVISION: _____
APPROVED: <i>K. Kim Rice</i>	DATE: 5-5-10	
K. KIM RICE, P.E.	PRECONSTRUCTION ENGINEER	
RECOMMENDED: <i>H. M. Douthitt</i>	DATE: 4/30/2010	
HARVEY M. DOUTHITT, P.E.	DESIGN SECTION CHIEF	

STATE OF ALASKA DEPARTMENT OF TRANSPORTATION AND PUBLIC FACILITIES CENTRAL REGION	
PEDRO BAY AIRPORT PEDRO BAY, ALASKA AIRPORT LAYOUT PLAN	
DATE: 03/26/2010	SHEET: 1 OF 6

Date Plotted: 3/25/2010, 11:32 AM
 Layout Name: ELAY(2)
 File Name: P:\Projects\059422\059422S\PEDRO BAY VLP_VLP_PEDRO_BAY.dwg
 Designed By: nilawlyn
 Drawn By: boquinn
 Checked By: bhannon
 FILE No.: 232-101-2



ID #	DESCRIPTION	STATION/OFFSET	TOP ELEV (NAVD88)	OBSTRUCT MARKING
1	SREB	119+24/335' LT	85'	NONE
2	CONEX	119+02/370' LT	75'	NONE
3	OUTHOUSE	119+42/356' LT	77'	NONE

NOTES:
 1. THERE ARE NO ROFZ OBJECT PENETRATIONS.
 2. TOPOGRAPHIC CONTOURS NOT AVAILABLE.

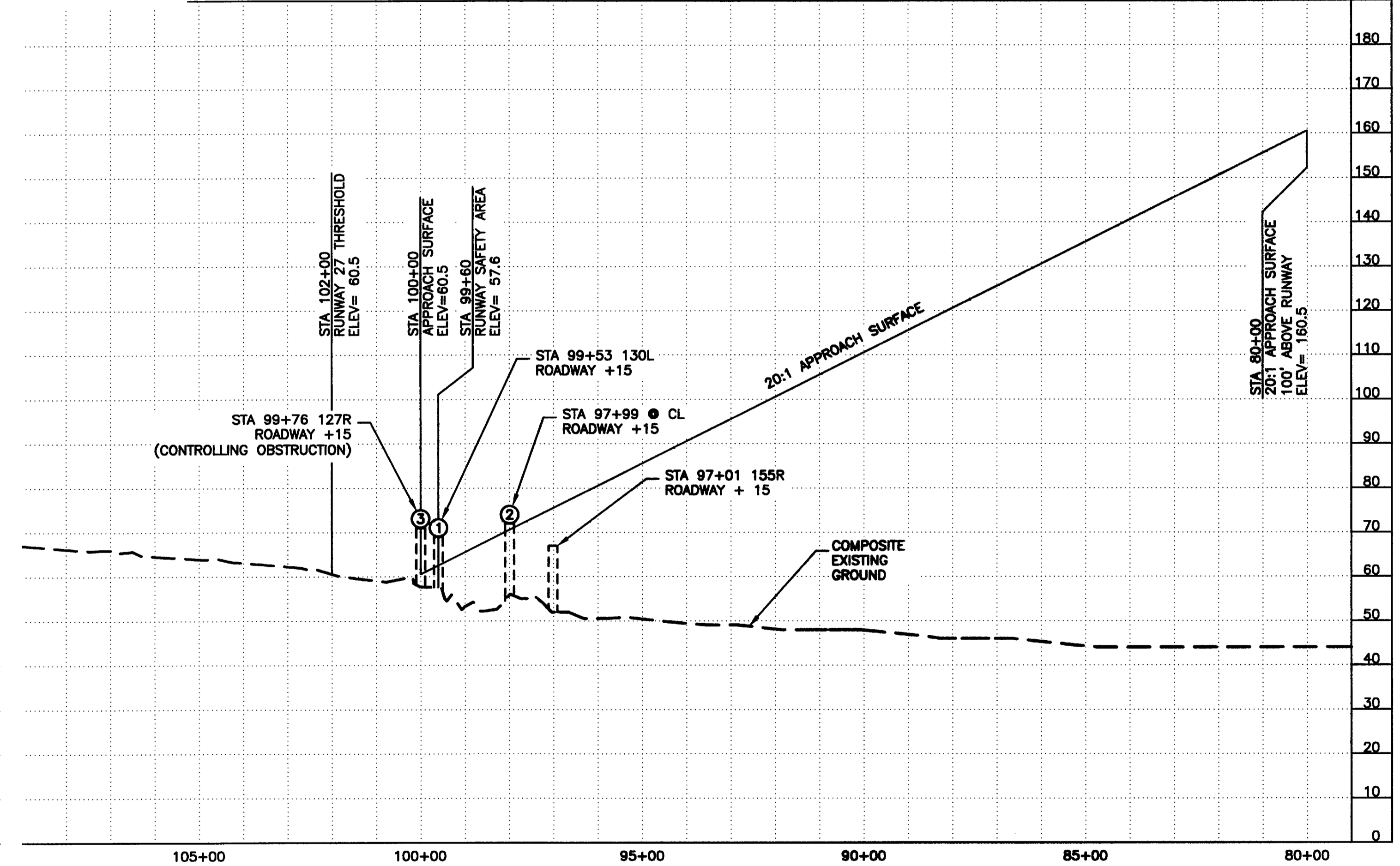
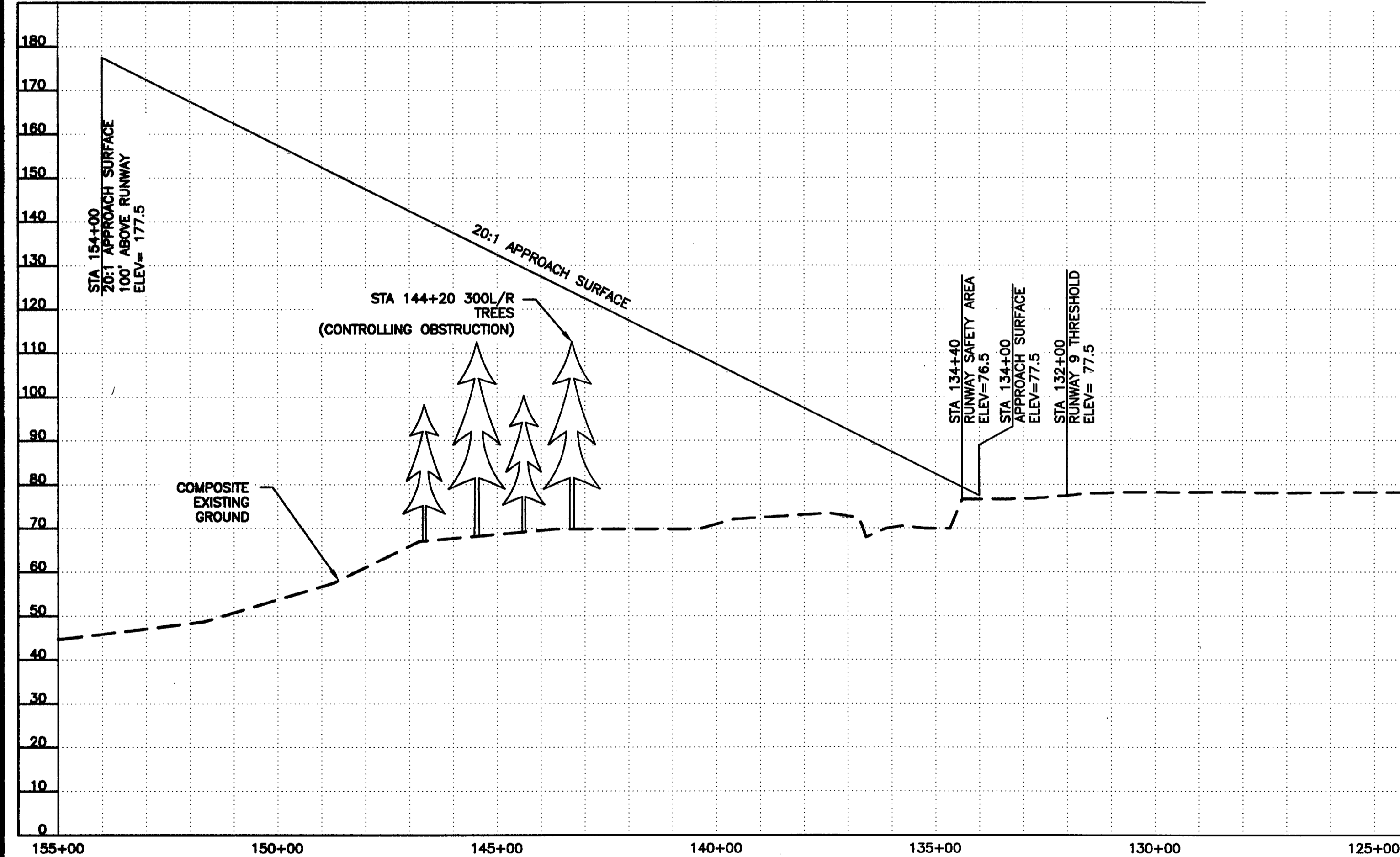
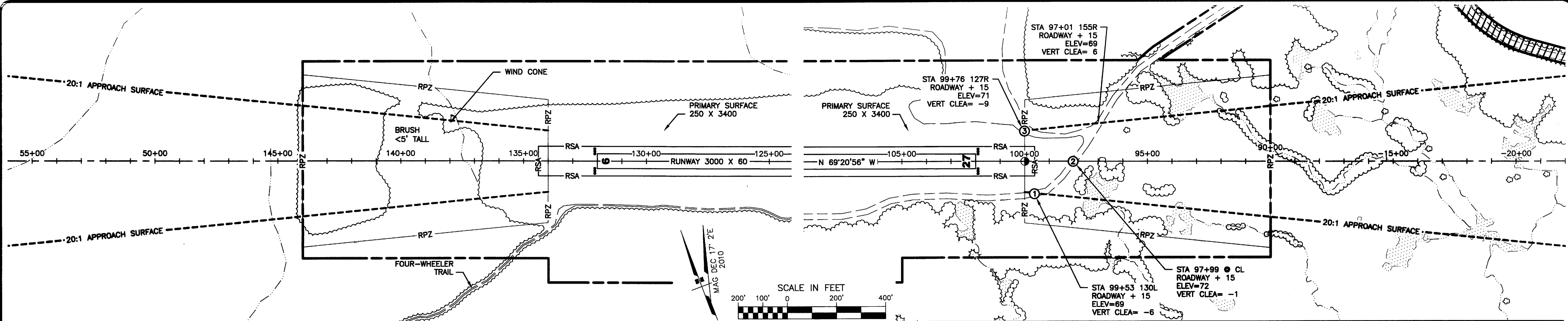
BY	DATE	REVISION

STATE OF ALASKA
DEPARTMENT OF TRANSPORTATION
AND PUBLIC FACILITIES
CENTRAL REGION

PEDRO BAY AIRPORT
 PEDRO BAY, ALASKA
 AIRPORT LAYOUT PLAN
 EXISTING LAYOUT

DATE: 03/26/2010
 SHEET: 2 OF 6

Date Plotted: 4/28/2010, 9:39 AM
 Layout Name: APP (3)
 File Name: P:\Projects\058422\PEDRO BAY ALP_PEDRO_BAY.dwg
 Designed By: nilevellyn
 Drawn By: boquinn
 Checked By: bhanson



RUNWAY 9

PART 77 SURFACE OBSTRUCTION TABLE (INNER PORTION RW 9)

ID #	DESCRIPTION	STATION/OFFSET	ELEVATION	SURFACE PENETRATED	SURFACE ELEVATION	AMOUNT PENETRATION	DISPOSITION	STAGE TO CORRECT
	NONE							

NOTE: REFER TO THE AIRPORT AIRSPACE DRAWING FOR PENETRATIONS OF THE OUTER APPROACH SURFACES.

NOTES:

- THE CONTROLLING OBSTRUCTION FOR RUNWAY 9 IS A GROUP OF TREES AT STA 144+20 300L/R, ELEVATION IS 112.5. THE OBSTRUCTION CLEARANCE SLOPE IS ESTABLISHED AS 29:1 PER FAA AC 150/5200-35, SECTION 4, DATA ELEMENT NUMBER 57.
- THERE ARE NO OBJECT PENETRATIONS IN THE RUNWAY APPROACH END SITING SURFACE OF RUNWAY 9, AS DEFINED IN FAA AC 150/5300-13, chg 14, APPENDIX 2, TABLE A2-1, LINE 2.

RUNWAY 27

PART 77 SURFACE OBSTRUCTION TABLE (INNER PORTION RW 27)

ID #	DESCRIPTION	STATION/OFFSET	ELEVATION	SURFACE PENETRATED	SURFACE ELEVATION	AMOUNT PENETRATION	DISPOSITION	STAGE TO CORRECT
①	AIRPORT ACCESS ROAD	99+53/130L	69	APPROACH	63	6	REMOVE	FUTURE
②	AIRPORT ACCESS ROAD	97+99/0	72	APPROACH	71	1	REMOVE	FUTURE
③	ROAD	99+76/127R	71	APPROACH	62	9	REMOVE	FUTURE

NOTE: REFER TO THE AIRPORT AIRSPACE DRAWING FOR PENETRATIONS OF THE OUTER APPROACH SURFACES.

NOTES:

- THE CONTROLLING OBSTRUCTION FOR RUNWAY 27 IS THE ROAD CROSSING AT STA 99+76 127L, ELEVATION INCLUDING 15' VEHICLE IS 71. THE OBSTRUCTION CLEARANCE SLOPE IS ESTABLISHED AS 2:1 PER FAA AC 150/5200-35, SECTION 4, DATA ELEMENT NUMBER 57.
- THERE ARE NO OBJECT PENETRATIONS IN THE RUNWAY APPROACH END SITING SURFACE OF RUNWAY 27, AS DEFINED IN FAA AC 150/5300-13, chg 14, APPENDIX 2, TABLE A2-1, LINE 2.

BY	DATE	REVISION

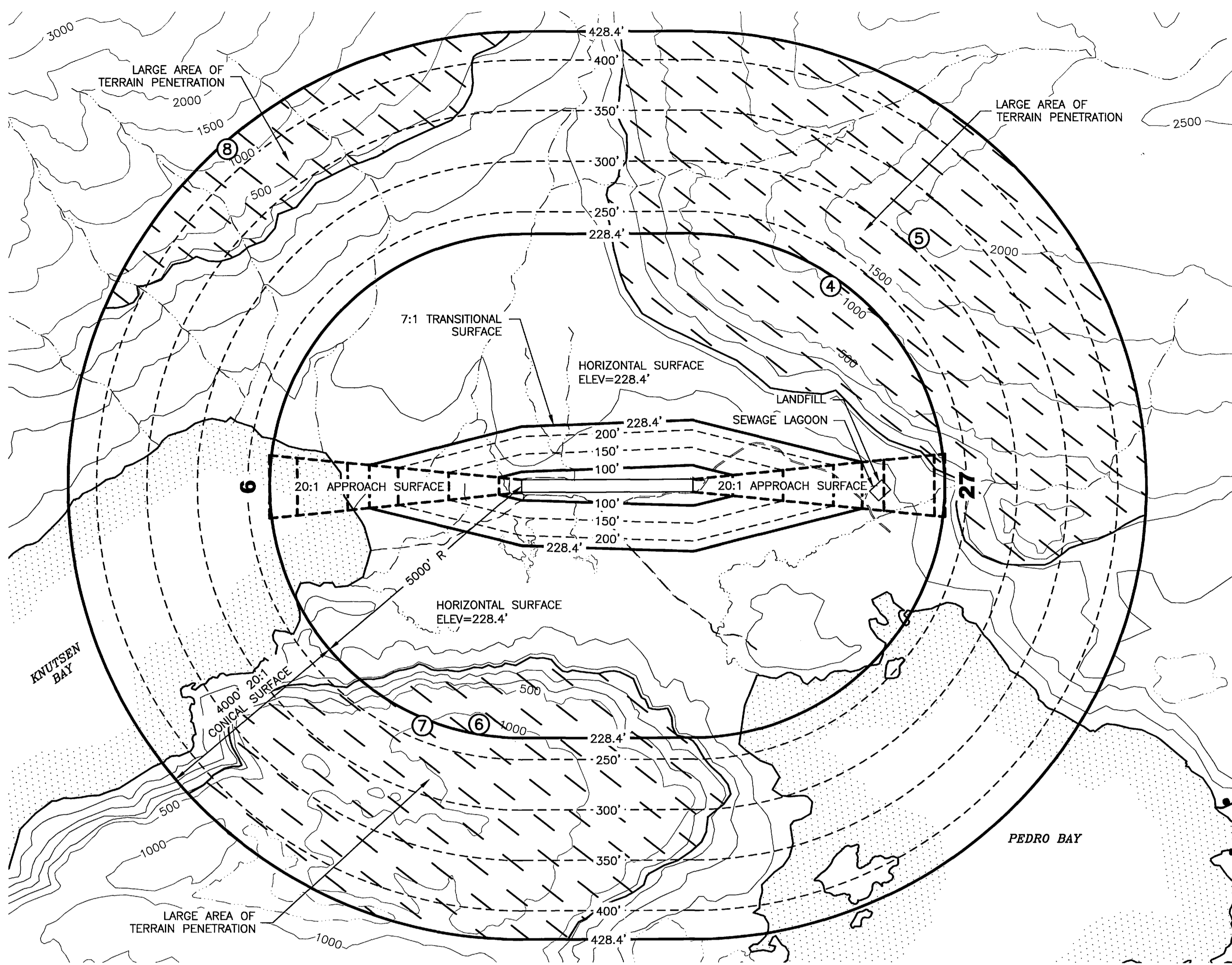
STATE OF ALASKA
DEPARTMENT OF TRANSPORTATION
AND PUBLIC FACILITIES
CENTRAL REGION

PEDRO BAY AIRPORT
PEDRO BAY, ALASKA
AIRPORT LAYOUT PLAN

EXISTING INNER PORTION OF THE APPROACH SURFACE

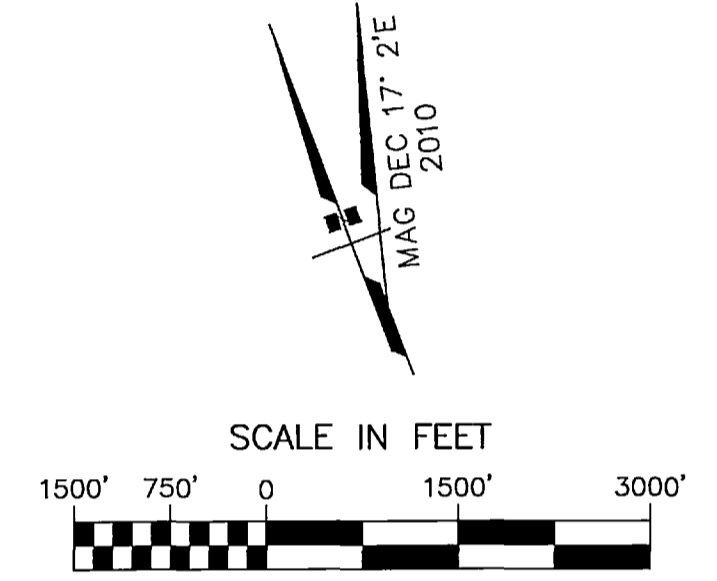
DATE: 03/26/2010
 SHEET: 3 OF 6

Date Plotted: 3/26/2010, 11:33 AM
 Layout Name: P77 (4)
 File Name: P:\Projects\059422\059422S\PEDRO BAY\ALP\ALP_PEDRO_BAY.dwg
 Designed By: ntwalyn
 Drawn By: bostum
 Checked By: bostum



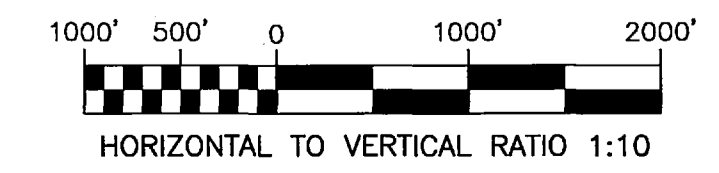
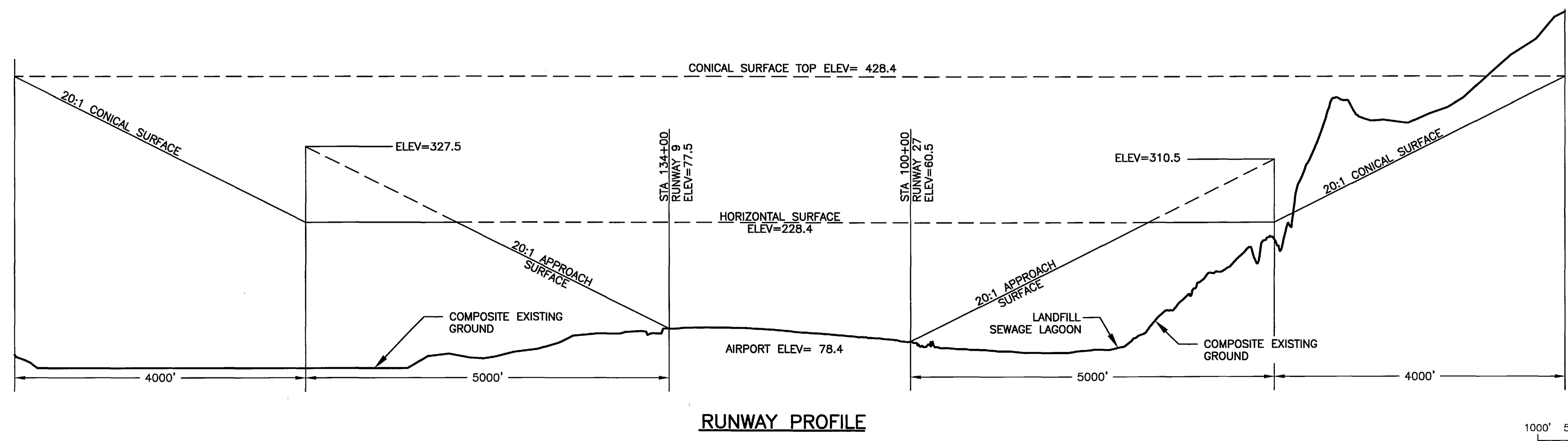
ID #	DESCRIPTION	STATION/OFFSET	ELEVATION	SURFACE PENETRATED	SURFACE ELEVATION	AMOUNT PENETRATION	DISPOSITION	STAGE TO CORRECT
(4)*	TERRAIN	72+57/3951' RT	1100'	HORIZONTAL	228.4'	872'	WILL REMAIN	
(5)*	TERRAIN	55+05/4901' RT	2000'	CONICAL	325'	1675'	WILL REMAIN	
(6)*	TERRAIN	142+55/4723' LT	1000'	HORIZONTAL	228.4'	772'	WILL REMAIN	
(7)*	TERRAIN	153+81/4746' LT	1000'	CONICAL	228.5'	772'	WILL REMAIN	
(8)*	TERRAIN	192+21/6691' RT	1200'	CONICAL	410'	790'	WILL REMAIN	

* HIGHEST FEATURE IN A LARGE AREA OF TERRAIN PENETRATION. REFER TO HATCHED AREAS ON MAP.



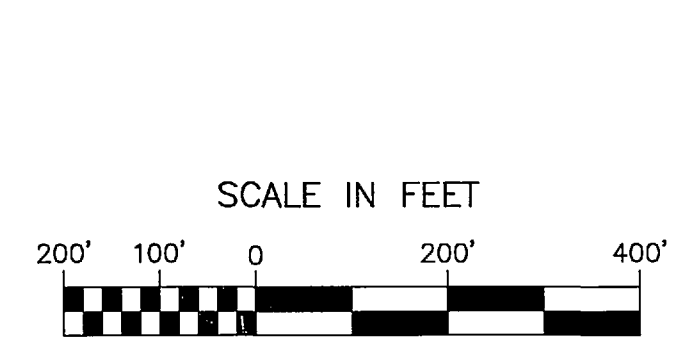
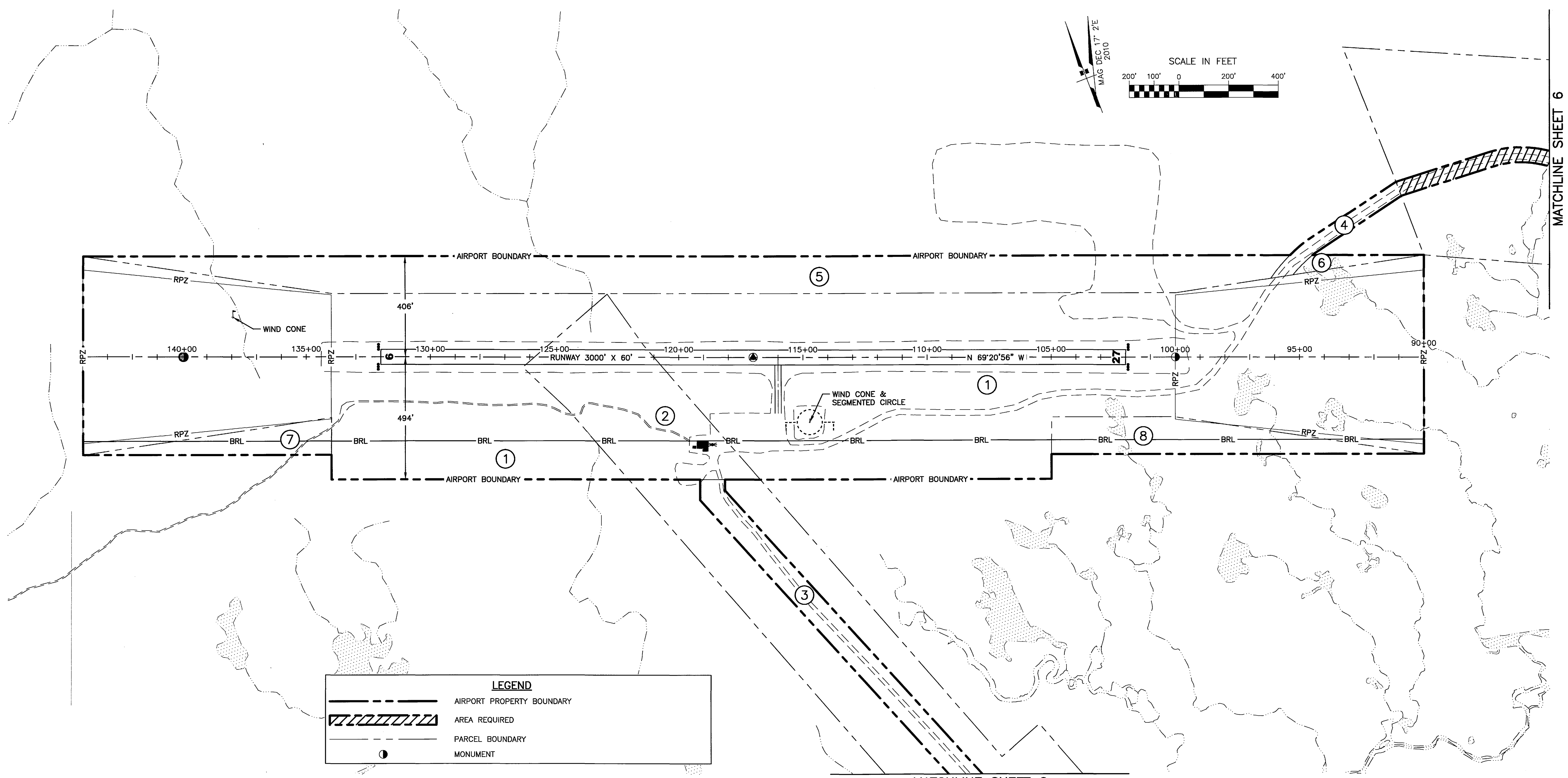
NOTES

- AIRPORT ELEVATION IS 78.4'.
- ALL CONTOURS ARE IN FEET. BASEMAP DATA IS FROM USGS QUADS ILIAMNA (C-3, C-4, D-3, D-4). USGS DATUM IS WGS84.
- PRIMARY SURFACE WIDTH IS 250'.
- A RANGE FINDER WITH A BUILT-IN INCLINOMETER WAS USED TO IDENTIFY OBSTRUCTIONS CLOSE TO THE RUNWAY IN THE PRIMARY AND TRANSITIONAL SURFACES.
- REFER TO INNER PORTION OF THE APPROACH SURFACE DRAWING FOR CLOSE-IN OBSTRUCTIONS.
- PART 77 SURFACES BASED ON EXISTING AIRPORT LAYOUT.
- LANDFILL LOCATED 4000' FROM NEAREST POINT ON THE RUNWAY. THE SEWAGE LAGOON IS LOCATED 3900' FROM THE NEAREST POINT ON THE RUNWAY.
- THERE ARE NO KNOWN ORDINANCES OR STATUTES IN EFFECT THAT SPECIFY HEIGHT RESTRICTIONS.
- APPROACH SURFACES ARE 20:1 BEGINNING AT 200 FEET BEYOND THE THRESHOLDS.



BY	DATE	REVISION
STATE OF ALASKA DEPARTMENT OF TRANSPORTATION AND PUBLIC FACILITIES CENTRAL REGION		
PEDRO BAY AIRPORT PEDRO BAY, ALASKA AIRPORT LAYOUT PLAN		DATE: 03/26/2010 SHEET: 4 OF 6
AIRPORT AIRSPACE 14 CFR, PART 77		

Date Plotted: 3/26/2010, 11:40 AM
 Layout Name: P:\Projects\059422\0594225\PEDRO BAY\ALP\ALP_PEDRO_BAY.dwg
 File Name:
 Designed By: nilwelyln
 Drawn By: bogulinn
 Checked By: brntson
 FILE No.: 232-101-5



LEGEND	
	AIRPORT PROPERTY BOUNDARY
	AREA REQUIRED
	PARCEL BOUNDARY
	MONUMENT

MATCHLINE SHEET 6

- NOTES:**
- TRACT 1 IS PORTION OF TRACT 2. BLM ANSCA SEC 14(c) SURVEY AT PEDRO BAY, AK. PLAT NO. 92-10, ILIAMNA RECORDING DISTRICT.
 - TRACTS 2 & 3 ARE A PORTION OF TRACT 1, BLM ANSCA SEC 14(c) SURVEY AT PEDRO BAY, AK. PLAT NO. 92-10, ILIAMNA RECORDING DISTRICT.
 - TRACT 4 ROAD RIGHT OF WAY ALIGNMENT SHOWN BASED ON AERIAL PHOTOGRAPHY. VERIFICATION OF ALL BEARINGS, DISTANCES, AND ACREAGE DESCRIBED IN GRANT OF RIGHT OF WAY DOCUMENT PENDING CORRECTION OF AN AS BUILT SURVEY PLAN. A PORTION OF THE ROAD BOUNDARY ADJUSTED BY BLM ANSCA SEC 14(c) SURVEY IS DESCRIBED AS THE NEW AIRPORT ROAD 60' WIDE R.O.W. THE REMAINING PORTION OF THE ROAD IS LOCATED WITHIN TRACT 7 OF THE BLM ANSCA 14(c) SURVEY, PLAT NO. 92-10 RECORDED 10-26-92, ILIAMNA RECORDING DISTRICT.
 - SURFACE ESTATE OF TRACTS 1, 2, 3 & 4 ARE PROTECTED BY AN AGREEMENT WITH BRISTOL BAY NATIVE CORPORATION. SUBSURFACE OWNER DATED 5-31-85.

PROPERTY STATUS							
ID #	INTEREST	GRANTOR	GRANTEE	PARCEL SIZE	DATE ACQUIRED	RECORDED DOC NO.	ACQUIRED AIP NO.
* 1	30 YR. AIRPORT LEASE (SURFACE)	STATE OF ALASKA DCRA	STATE OF ALASKA, DOT/PF	78.1 ac ±	10/09/85	BK 13 PG 591	3-02-0215-01
	RESTRICTIVE COVENANTS (SUBSURFACE)	BRISTOL BAY NATIVE CORP.			6/03/85	BK 12 PG 793	
* 2	OCD (SURFACE)**	PEDRO BAY CORP.	STATE OF ALASKA, DOT/PF	7.4 ac ±	4/08/81	BK 9 PG 678	3-02-0215-01
	RESTRICTIVE COVENANTS (SUBSURFACE)	BRISTOL BAY NATIVE CORP.			6/03/85	BK 12 PG 793	
* 3	UTILITY EASEMENT (SURFACE)	PEDRO BAY CORP.	PEDRO BAY CORP.	6.71 ac ±	3/18/97	BK 26 PG 33	3-02-0215-01
	RESTRICTIVE COVENANTS (SUBSURFACE)	BRISTOL BAY NATIVE CORP.	STATE OF ALASKA, DOT/PF		6/03/85	BK 12 PG 793	
* 4	GRANT OF RIGHT OF WAY	STATE OF ALASKA DCRA	STATE OF ALASKA, DOT/PF	6.66± ac ±	1/16/86	BK 13 PG 943	3-02-0215-01
	RESTRICTIVE COVENANTS (SUBSURFACE)	BRISTOL BAY NATIVE CORP.			6/03/85	BK 12 PG 793	
5	DEED SURFACE	PEDRO BAY CORP.	STATE OF ALASKA, DOT/PF	14.55 ac ±	2/28/97	BK 25 PG 956	3-02-0215-03
	DEED SUBSURFACE	BRISTOL BAY NATIVE CORP.			6/1/95	BK 25 PG 947	
6	DEED SURFACE	PEDRO BAY CORP.	STATE OF ALASKA, DOT/PF	0.43 ac ±	2/28/97	BK 25 PG 956	3-02-0215-03
	DEED SUBSURFACE	BRISTOL BAY NATIVE CORP.			6/1/95	BK 25 PG 947	
7	DEED SURFACE	PEDRO BAY CORP.	STATE OF ALASKA, DOT/PF	1.72 ac ±	2/28/97	BK 25 PG 956	3-02-0215-03
	DEED SUBSURFACE	BRISTOL BAY NATIVE CORP.			6/1/95	BK 25 PG 947	
8	DEED SURFACE	PEDRO BAY CORP.	STATE OF ALASKA, DOT/PF	3.44 ac ±	2/28/97	BK 25 PG 956	3-02-0215-03
	DEED SUBSURFACE	BRISTOL BAY NATIVE CORP.			6/1/95	BK 25 PG 947	

* SEE NOTES 1-4.
 ** (THIS IS THE REMAINING PORTION FROM THE ORIGINAL 45.28 ACRES.)

BY	DATE	REVISION

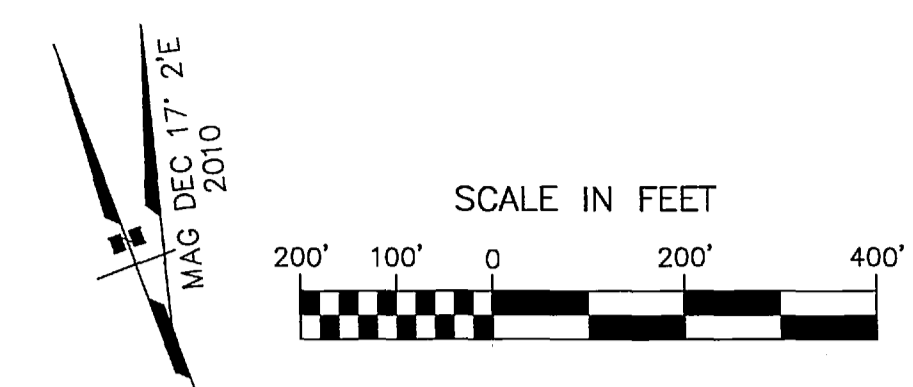
**STATE OF ALASKA
DEPARTMENT OF TRANSPORTATION
AND PUBLIC FACILITIES
CENTRAL REGION**

PEDRO BAY AIRPORT
PEDRO BAY, ALASKA
AIRPORT LAYOUT PLAN
AIRPORT PROPERTY MAP

DATE: 03/26/2010
SHEET: 5 OF 6

Date Plotted: 3/26/2010, 11:41 AM
 Layout Name: PROP_6
 File Name: P:\Projects\DS9422\PEDRO BAY\ALP_PEDRO_BAY.dwg
 Designed By: nielawlyn
 Drawn By: boquinn
 Checked By: bhanson
 FILE No.: 232-101-5

MATCHLINE SHEET 5



LEGEND	
	AIRPORT PROPERTY BOUNDARY
	AREA REQUIRED
	PARCEL BOUNDARY
	MONUMENT

MATCHLINE SHEET 5



NOTES:

- TRACT 1 IS PORTION OF TRACT 2, BLM ANSCA SEC 14(c) SURVEY AT PEDRO BAY, AK. PLAT NO. 92-10, ILIAMNA RECORDING DISTRICT.
- TRACTS 2 & 3 ARE A PORTION OF TRACT 1, BLM ANSCA SEC 14(c) SURVEY AT PEDRO BAY, AK. PLAT NO. 92-10, ILIAMNA RECORDING DISTRICT.
- TRACT 4 ROAD RIGHT OF WAY ALIGNMENT SHOWN BASED ON AERIAL PHOTOGRAPHY. VERIFICATION OF ALL BEARINGS, DISTANCES, AND ACREAGE DESCRIBED IN GRANT OF RIGHT OF WAY DOCUMENT PENDING CORRECTION OF AN AS BUILT SURVEY PLAN. A PORTION OF THE ROAD BOUNDARY ADJUSTED BY BLM ANSCA SEC 14(c) SURVEY IS DESCRIBED AS THE NEW AIRPORT ROAD 60' WIDE R.O.W. THE REMAINING PORTION OF THE ROAD IS LOCATED WITHIN TRACT 7 OF THE BLM ANSCA 14(c) SURVEY, PLAT NO. 92-10 RECORDED 10-26-92, ILIAMNA RECORDING DISTRICT.
- SURFACE ESTATE OF TRACTS 1, 2, 3 & 4 ARE PROTECTED BY AN AGREEMENT WITH BRISTOL BAY NATIVE CORPORATION. SUBSURFACE OWNER DATED 5-31-85.

PROPERTY STATUS							
ID #	INTEREST	GRANTOR	GRANTEE	PARCEL SIZE	DATE ACQUIRED	RECORDED DOC NO.	ACQUIRED AIP NO.
* 1	30 YR. AIRPORT LEASE (SURFACE)	STATE OF ALASKA DCRA	STATE OF ALASKA, DOT/PF	78.1 ac ±	10/09/85	BK 13 PG 591	3-02-0215-01
	RESTRICTIVE COVENANTS (SUBSURFACE)	BRISTOL BAY NATIVE CORP.			6/03/85	BK 12 PG 793	
* 2	OCD (SURFACE)**	PEDRO BAY CORP.	STATE OF ALASKA, DOT/PF	7.4 ac ±	4/08/81	BK 9 PG 678	3-02-0215-01
	RESTRICTIVE COVENANTS (SUBSURFACE)	BRISTOL BAY NATIVE CORP.			6/03/85	BK 12 PG 793	
* 3	UTILITY EASEMENT (SURFACE)	PEDRO BAY CORP.	PEDRO BAY CORP.	6.71 ac ±	3/18/97	BK 26 PG 33	3-02-0215-01
	RESTRICTIVE COVENANTS (SUBSURFACE)	BRISTOL BAY NATIVE CORP.	STATE OF ALASKA, DOT/PF		6/03/85	BK 12 PG 793	
* 4	GRANT OF RIGHT OF WAY	STATE OF ALASKA DCRA	STATE OF ALASKA, DOT/PF	6.66± ac ±	1/16/86	BK 13 PG 943	3-02-0215-01
	RESTRICTIVE COVENANTS (SUBSURFACE)	BRISTOL BAY NATIVE CORP.			6/03/85	BK 12 PG 793	
5	DEED SURFACE	PEDRO BAY CORP.	STATE OF ALASKA, DOT/PF	14.55 ac ±	2/28/97	BK 25 PG 956	3-02-0215-03
	DEED SUBSURFACE	BRISTOL BAY NATIVE CORP.			6/1/95	BK 25 PG 947	
6	DEED SURFACE	PEDRO BAY CORP.	STATE OF ALASKA, DOT/PF	0.43 ac ±	2/28/97	BK 25 PG 956	3-02-0215-03
	DEED SUBSURFACE	BRISTOL BAY NATIVE CORP.			6/1/95	BK 25 PG 947	
7	DEED SURFACE	PEDRO BAY CORP.	STATE OF ALASKA, DOT/PF	1.72 ac ±	2/28/97	BK 25 PG 956	3-02-0215-03
	DEED SUBSURFACE	BRISTOL BAY NATIVE CORP.			6/1/95	BK 25 PG 947	
8	DEED SURFACE	PEDRO BAY CORP.	STATE OF ALASKA, DOT/PF	3.44 ac ±	2/28/97	BK 25 PG 956	3-02-0215-03
	DEED SUBSURFACE	BRISTOL BAY NATIVE CORP.			6/1/95	BK 25 PG 947	

* SEE NOTES 1-4.
 ** (THIS IS THE REMAINING PORTION FROM THE ORIGINAL 45.28 ACRES.)

BY	DATE	REVISION

**STATE OF ALASKA
DEPARTMENT OF TRANSPORTATION
AND PUBLIC FACILITIES
CENTRAL REGION**

PEDRO BAY AIRPORT
PEDRO BAY, ALASKA
AIRPORT LAYOUT PLAN
AIRPORT PROPERTY MAP

DATE:	03/26/2010
SHEET:	6 OF 6