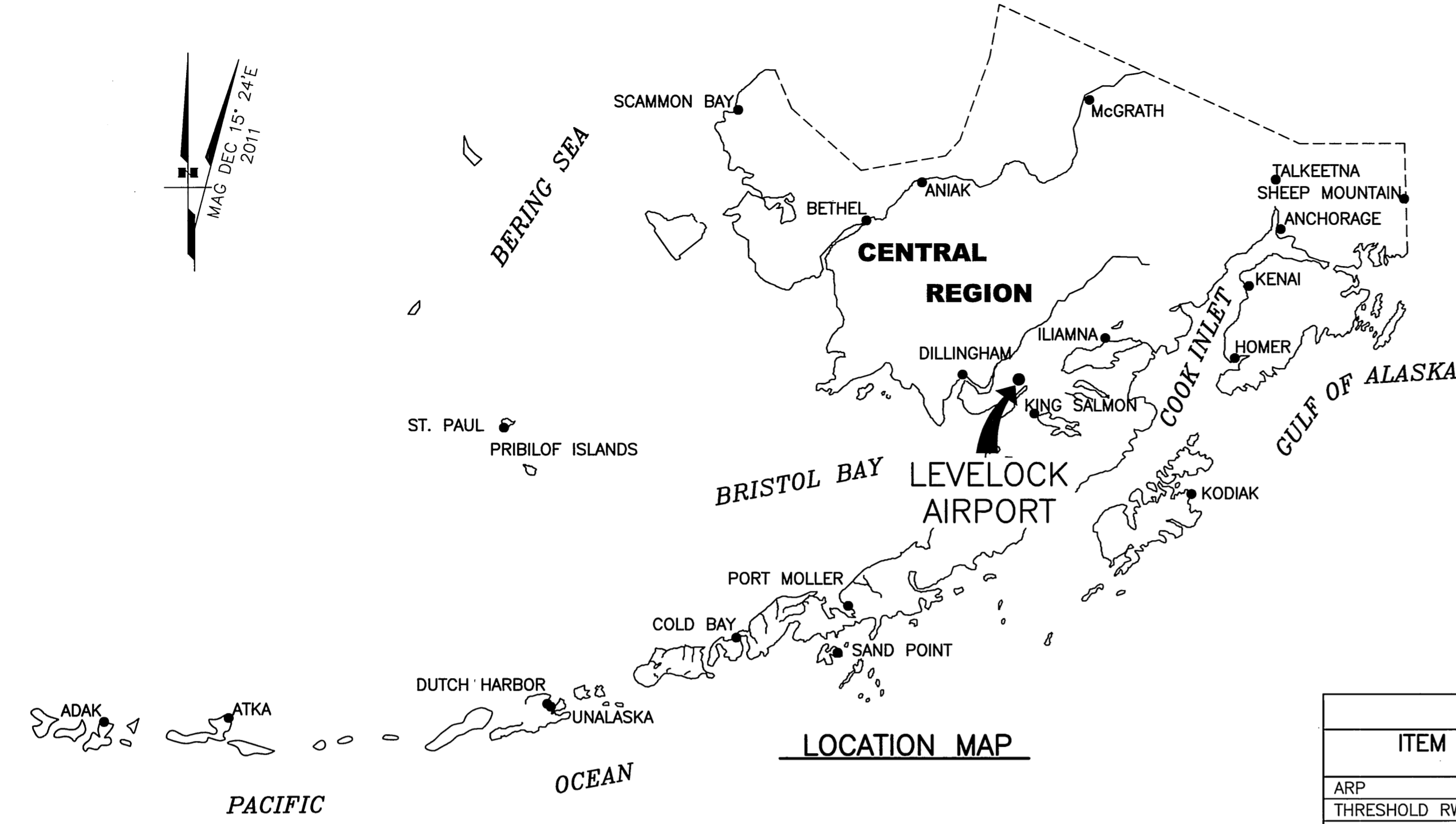


FILE No.: xxx-xxx
 Designed By: vgroeschel
 Drawn By: mbauer
 Checked By: blanson
 Date Plotted: 4/03/2013, 1:48 PM
 Layout Name: DATA (1)
 File Name: W:\Projects\Levelock\ALP\2013 Update\Final Drawings\ALP-LEVELOCK.dwg



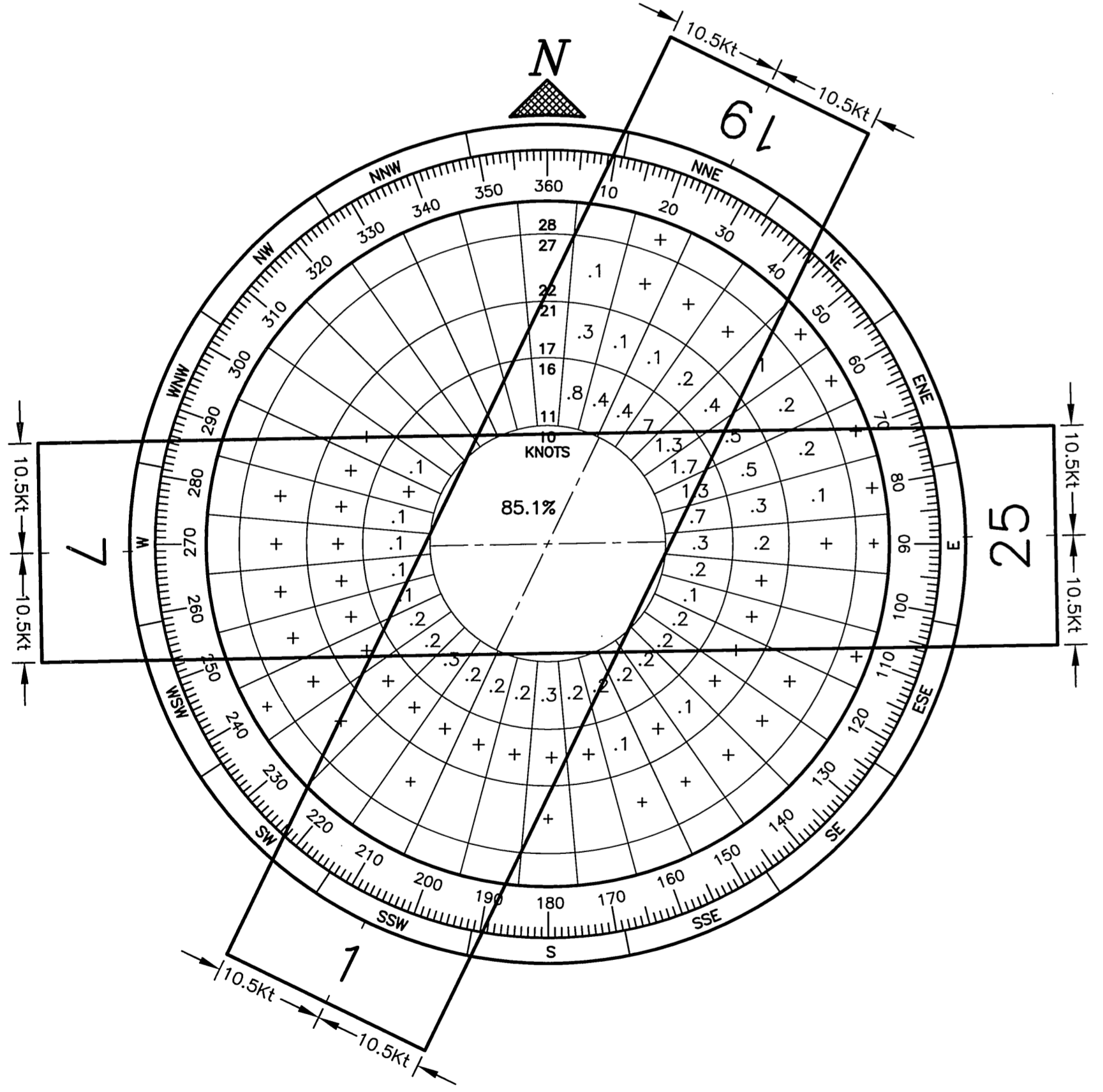
LEGEND		
ITEM	EXISTING	ULTIMATE
AIRPORT REFERENCE POINT (ARP)		
ANTENNA		
ATV TRAIL		
BLUFF		
BUILDINGS		
BUILDING RESTRICTION LINE (BRL)		
FENCE		
PAPI		
PROPERTY LINE		
REIL		
ROADWAYS		
ROTATING BEACON		
SHORELINE		
SURVEY MONUMENT		
THRESHOLD MARKERS/LIGHTS		
TOPOGRAPHIC CONTOURS		
TRAIL		
TREE (LARGE SINGLE)		
TREELINE		
VASI		
WIND CONE		
WIND CONE AND SEGMENTED CIRCLE		

GEOGRAPHIC COORDINATES TABLE				
ITEM	EXISTING LATITUDE	EXISTING LONGITUDE	ULTIMATE LATITUDE	ULTIMATE LONGITUDE
ARP	59°07'41.05"N	156°51'31.10"W	59°07'41.05"N	156°51'31.10"W
THRESHOLD RW 1	59°07'22.91"N	156°51'49.41"W	59°07'22.91"N	156°51'49.41"W
THRESHOLD RW 19	59°07'51.97"N	156°51'21.89"W	59°07'51.97"N	156°51'21.89"W
THRESHOLD RW 7			59°07'46.66"N	156°51'45.47"W
THRESHOLD RW 25			59°07'46.30"N	156°51'03.35"W

AIRPORT DATA		
ITEM	EXISTING	ULTIMATE
ICAO IDENTIFIER	NONE	NONE
NATIONAL AIRPORT IDENTIFIER	9Z8	9Z8
FAA SITE NUMBER	50449.01*A	50449.01*A
AIRPORT ELEVATION NAVD88	43.6'	43.6'
AIRPORT REFERENCE CODE	B-I	B-I
MEAN MAX. TEMPERATURE, HOTTEST MONTH	66°F, JULY	66°F, JULY
AIRPORT AND TERMINAL NAVIGATION AIDS	NONE	NONE
TAXIWAY LIGHTING/MARKING	M.I./NA	M.I./NA
OBSTRUCTION SURVEY SOURCE & TYPE	NONE	NONE
MAGNETIC DECLINATION, YEAR, RATE OF CHANGE	15°24'E / 2011	-0°15'(W) / YEAR

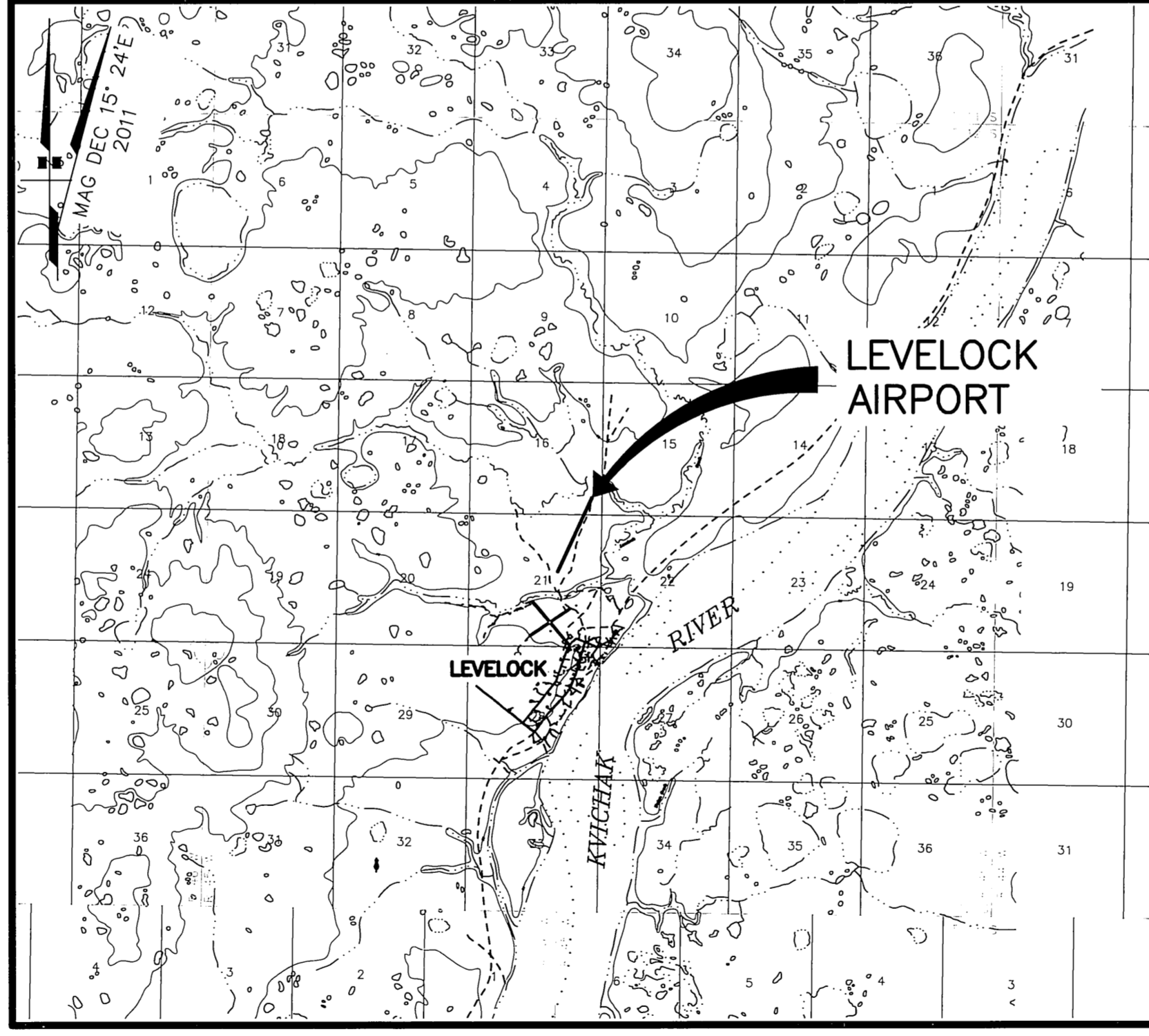
RUNWAY 1/19 DATA			
ITEM	EXISTING	NEAR-TERM	ULTIMATE
RUNWAY TYPE UTILITY OR OTHER THAN UTILITY	OTHER THAN UTILITY		OTHER THAN UTILITY
FAR PART 77 APPROACH CATEGORY (V, NPI, P)	V / V		V / V
APPROACH SURFACES	34:1 / 34:1		34:1 / 34:1
VISIBILITY MINIMUM	1 SM		1 SM
RUNWAY SURFACE	GRAVEL		GRAVEL
PAVEMENT STRENGTH SW,DW,DTW,DDTW x1000lbs	N/A		N/A
AIRCRAFT APPROACH CATEGORY	B		B
AIRPLANE DESIGN GROUP	I		I
MEAN GEODETIC BEARING	N25°57'32"W		N25°57'32"W
EFFECTIVE GRADE	0.11%		0.11%
TOUCHDOWN ELEVATION NAVD88 (ESTIMATED)	*43.6' / 40.1'		*43.6' / 40.1'
RUNWAY DIMENSIONS	59' x 3281'		59' x 3281'
RUNWAY SAFETY AREA (RSA) DIMENSIONS	118' x 3755'		120' x 3761'
LENGTH BEYOND RW END	237' / 237'		240' / 240'
RUNWAY PROTECTION ZONE (RPZ) DIMENSIONS	1000' x 250' x 450'		1000' x 500' x 700'
RUNWAY OBJECT FREE AREA (ROFA) DIMENSIONS	394' x 3753'		400' x 3761'
LENGTH BEYOND RW END OR STOPWAY	236' / 236'		240' / 240'
RUNWAY OBSTACLE FREE ZONE (ROFZ) DIMENSIONS	394' x 3675'		250' x 3681'
RUNWAY LIGHTING	M.I.		M.I.
RUNWAY MARKING TYPE	NONE		NONE
RUNWAY VISUAL APPROACH AIDS	NONE		NONE

RUNWAY 7/25 DATA			
ITEM	EXISTING	NEAR-TERM	ULTIMATE
RUNWAY TYPE UTILITY OR OTHER THAN UTILITY			UTILITY
FAR PART 77 APPROACH CATEGORY (V, NPI, P)			V / V
APPROACH SURFACES			20:1 / 20:1
VISIBILITY MINIMUM			1 SM
RUNWAY SURFACE			GRAVEL
PAVEMENT STRENGTH SW,DW,DTW,DDTW x1000lbs			N/A
AIRCRAFT APPROACH CATEGORY			B
AIRPLANE DESIGN GROUP			I
MEAN GEODETIC BEARING			N89°02'28"E
EFFECTIVE GRADE			0%
TOUCHDOWN ELEVATION NAVD88 (ESTIMATED)			40.1' / 40.1'
RUNWAY DIMENSIONS			60' x 2198'
RUNWAY SAFETY AREA (RSA) DIMENSIONS			120' x 2678'
LENGTH BEYOND RW END			240' / 240'
RUNWAY PROTECTION ZONE (RPZ) DIMENSIONS			1000' x 500' x 700'
RUNWAY OBJECT FREE AREA (ROFA) DIMENSIONS			400' x 2678'
LENGTH BEYOND RW END OR STOPWAY			240' / 240'
RUNWAY OBSTACLE FREE ZONE (ROFZ) DIMENSIONS			250' x 2598'
RUNWAY LIGHTING			M.I.
RUNWAY MARKING TYPE			NONE
RUNWAY VISUAL APPROACH AIDS			NONE



WIND DATA TABLE				
RUNWAY	10.5 kt	13 kt	16 kt	20 kt
RUNWAY 01/19	95.4%	97.5%	99.0%	99.7%
RUNWAY 07/25	94.4%	97.0%	98.9%	99.7%
COMBINED	99.1%	99.7%	99.9%	100%

SOURCE: E.N.R.I., UNIVERSITY OF ALASKA.
 PERIOD: AUG. 5, 1995 TO APRIL 15, 1997



VICINITY MAP
 SEC. 15, 16, 21 & 22, T 12 S, R 45 W,
 SEWARD MERIDIAN
 U.S.G.S. DILLINGHAM (A-3), ALASKA

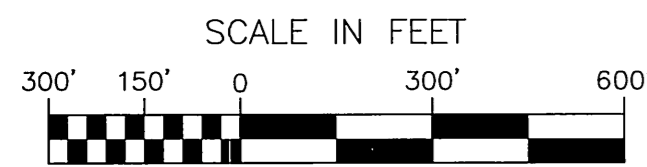
- NOTES**
- ELEVATIONS ARE BASED ON 2004 ALP TOPOGRAPHICAL SURVEY DATA. VERTICAL DATUM UNKNOWN.
 - THRESHOLD COORDINATES DETERMINED FROM DOT & PF (OCTOBER 9, 2000) RECORD OF SURVEY.(NAD83)
 - AIRPORT WAS ORIGINALLY DESIGNED AND BUILT USING SI UNITS.

DRAWING INDEX	
SHT #	TITLE
1	AIRPORT DATA SHEET
2	EXISTING LAYOUT
3	ULTIMATE LAYOUT
4	EXISTING INNER PORTION OF RW 1/19 APPROACH SURFACE
5	ULTIMATE INNER PORTION OF RW 1/19 APPROACH SURFACE
6	ULTIMATE INNER PORTION OF RW 7/25 APPROACH SURFACE
7	AIRPORT AIRSPACE, 14 CFR, PART 77
8	AIRPORT PROPERTY MAP

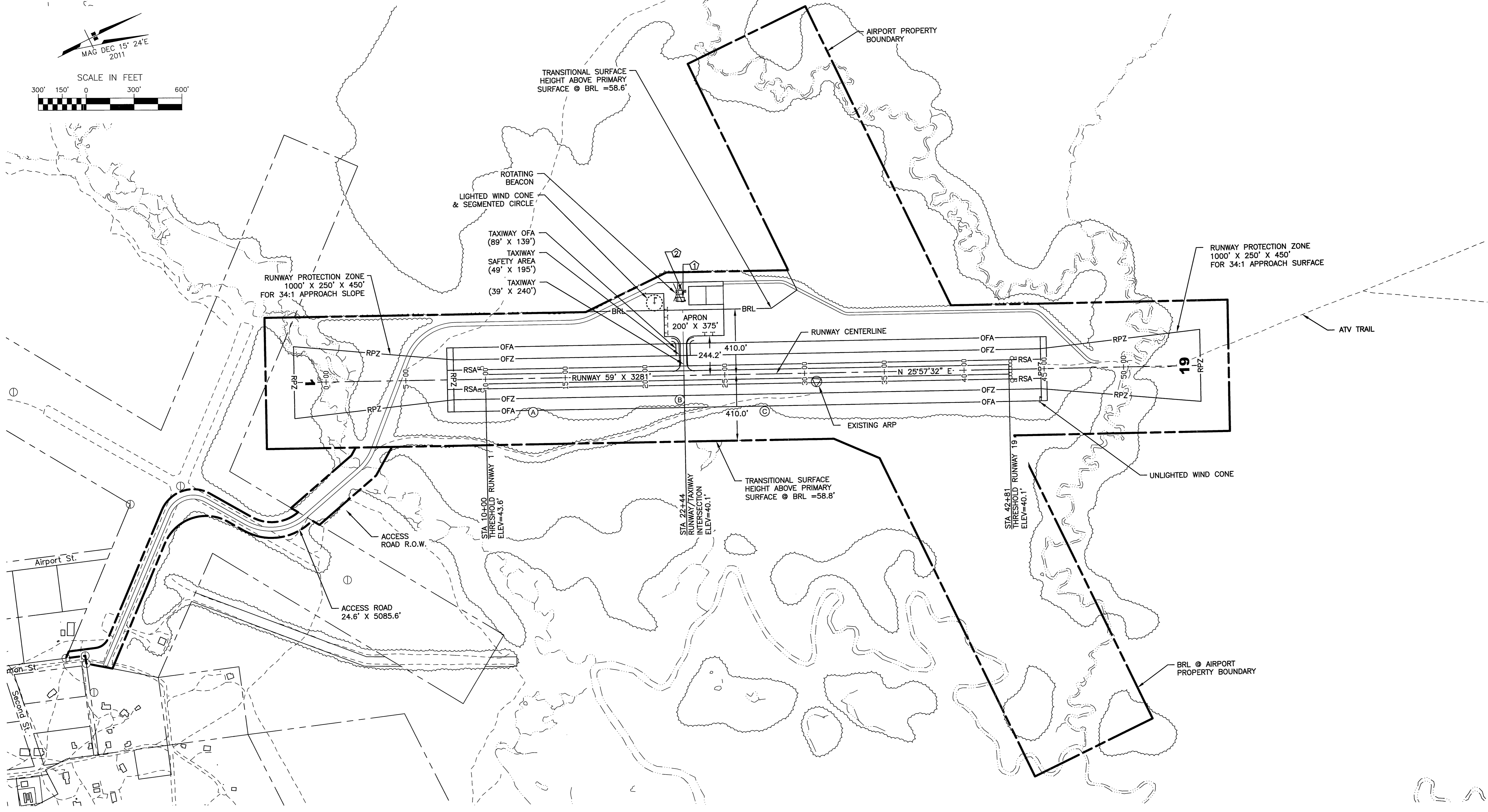
BY DATE / REVISION	APPROVED: <i>[Signature]</i> DATE: 4/5/2013
RECOMMENDED: <i>[Signature]</i>	DATE: 4/4/2013
HARVEY M. DOUGHERTY, P.E.	DESIGN SECTION CHIEF

STATE OF ALASKA DEPARTMENT OF TRANSPORTATION AND PUBLIC FACILITIES CENTRAL REGION	
LEVELOCK AIRPORT LEVELOCK, ALASKA AIRPORT LAYOUT PLAN AIRPORT DATA SHEET	DATE: 03/26/2013 SHEET: 1 OF 8

MAG DEC 15° 24'E
2011



FILE No.: xxx-xxx
 Designed By: vgroeschel
 Drawn By: rkbryant
 Checked By: bhanson
 Date Plotted: 4/03/2013, 1:49 PM
 Layout Name: E:\Projects\Levelock\ALP\2013_Update\Final
 File Name: Drawings\ALP-LEVELOCK.dwg



ID #	DESCRIPTION	STATION/OFFSET	TOP ELEV (NAVD88)	OBSTRUCT MARKING
①	SREB BUILDING 1	22+04/466' LT	67.9'	NONE
②	SREB BUILDING 2	22+04/504' LT	67.9'	NONE

ID #	DESCRIPTION	DISPOSITION
(A)	BRUSH/TREES	REMOVE
(B)	BRUSH/TREES	REMOVE
(C)	BRUSH/TREES	REMOVE

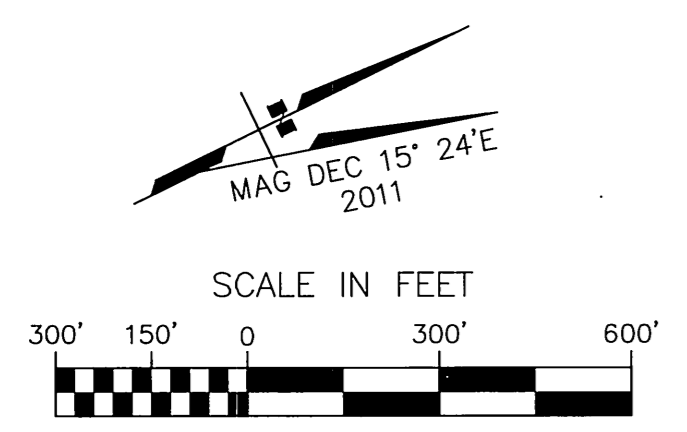
NOTES:
 1. THERE ARE NO ROFZ OBJECT PENETRATIONS.
 2. CONTOUR DATA NOT AVAILABLE.

BY	DATE	REVISION

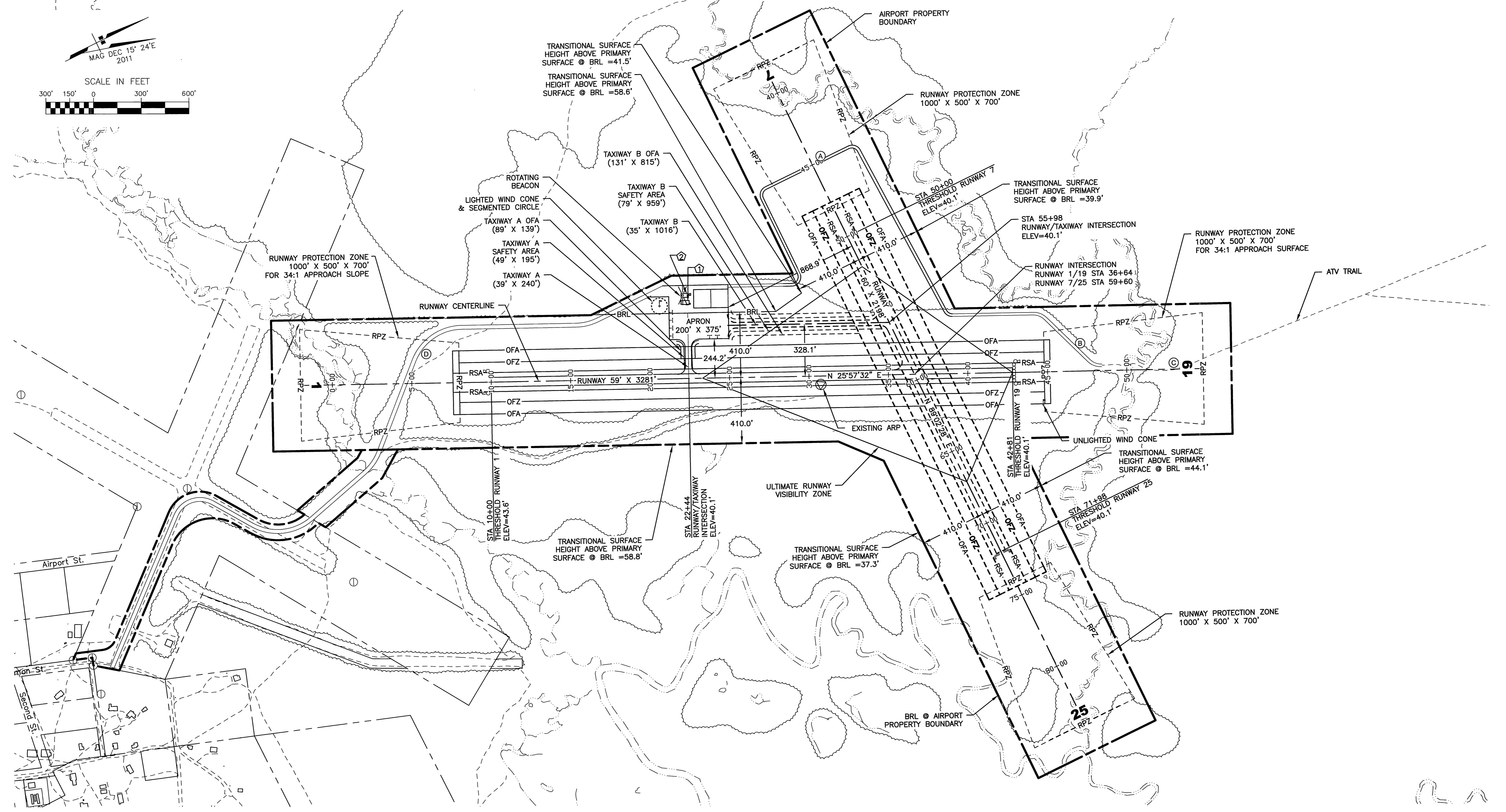
**STATE OF ALASKA
DEPARTMENT OF TRANSPORTATION
AND PUBLIC FACILITIES
CENTRAL REGION**

LEVELOCK AIRPORT
LEVELOCK, ALASKA
AIRPORT LAYOUT PLAN
EXISTING LAYOUT

DATE: 03/26/2013
SHEET: 2 OF 8



FILE No.: xxx-xxx
 Designed By: ygroeschel
 Drawn By: rbbjvnt
 Checked By: bhanson
 Date Plotted: 1/03/2013, 1:53 PM
 Layout Name: W:\Projects\Levelock\ALP_2013_Update\Final
 File Name: Drawings\ALP-LEVELOCK.dwg



BUILDING DATA TABLE				
ID #	DESCRIPTION	STATION/OFFSET	TOP ELEV (NAVD88)	OBSTRUCT MARKING
①	SREB BUILDING 1	12+04/466' LT	67.9'	NONE
②	SREB BUILDING 2	22+04/504' LT	67.9'	NONE

RPZ PENETRATIONS		
ID #	DESCRIPTION	DISPOSITION
(A)	ROAD	REMAIN
(B)	ROAD	REMAIN
(C)	ATV TRAIL	REMAIN
(D)	ROAD	REMAIN

NOTES:
 1. THERE ARE NO ROFZ OBJECT PENETRATIONS.
 2. CONTOUR DATA NOT AVAILABLE.
 3. NO RVZ PENETRATIONS.

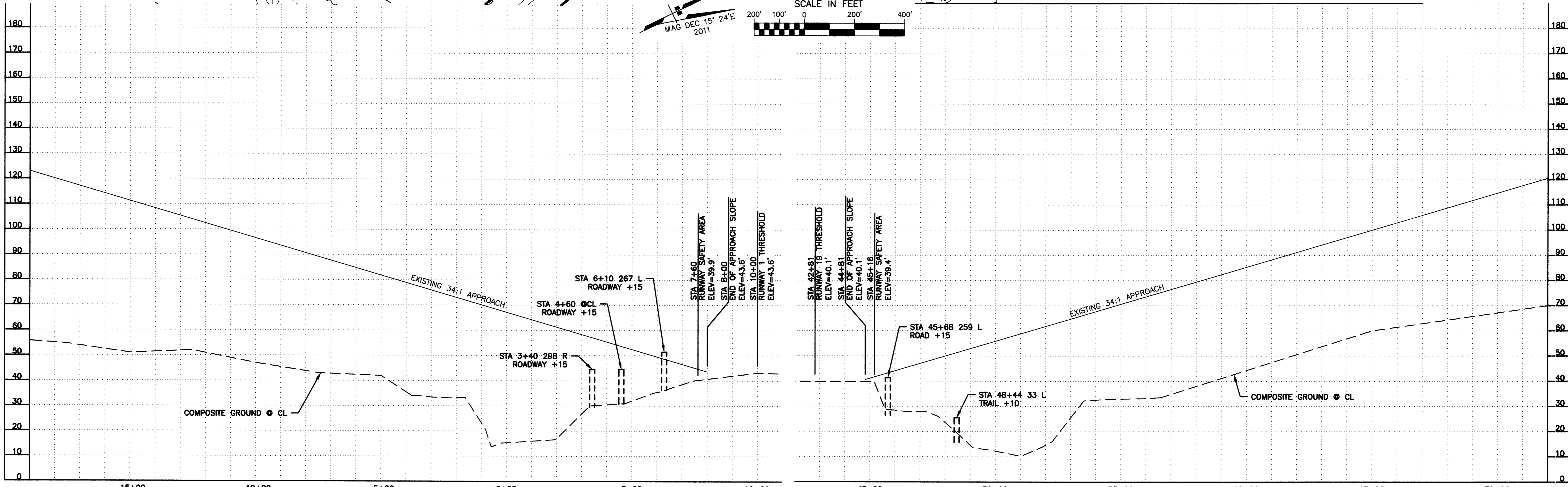
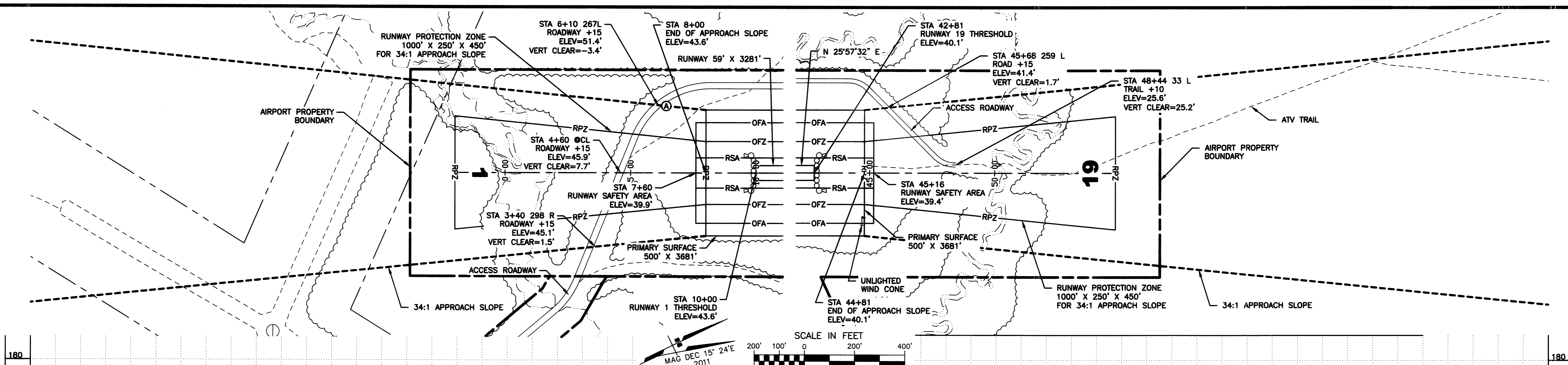
BY	DATE	REVISION

STATE OF ALASKA
DEPARTMENT OF TRANSPORTATION
AND PUBLIC FACILITIES
CENTRAL REGION

LEVELOCK AIRPORT
 LEVELOCK, ALASKA
 AIRPORT LAYOUT PLAN
 ULTIMATE LAYOUT

DATE: 03/26/2013
 SHEET: 3 OF 8

Date Plotted: 4/03/2013, 1:54 PM
 Layout Name: APP (4)
 File Name: W:\Projects\Levelock\ALP_2013 Update\Final Drawing\APP-LEVELOCK.dwg
 Designed By: vgroesche
 Drawn By: rbrvaint
 Checked By: blanson



RUNWAY 1

PART 77 SURFACE OBSTRUCTION TABLE (INNER PORTION RW 1)

ID #	DESCRIPTION	STATION/OFFSET	ELEVATION	SURFACE PENETRATED	SURFACE ELEVATION	AMOUNT PENETRATION	DISPOSITION	STAGE TO CORRECT
(A)	ROAD	6+10/267L	51.4	APPROACH	48.0	3.4	REMAIN	NONE

NOTE: REFER TO THE AIRPORT AIRSPACE DRAWING FOR PENETRATIONS OF THE OUTER APPROACH SURFACES.

NOTES:

- THE CONTROLLING OBSTRUCTION FOR RUNWAY 1 IS A ROAD AT STA:6+52, 267L, ELEVATION 51.4'. THE OBSTRUCTION CLEARANCE SLOPE IS ESTABLISHED AS 18:1 PER FAA AC 150/5200-35A, CHAPTER 4, DATA ELEMENT NUMBER 57.
- THERE ARE NO THRESHOLD SITING SURFACE OBJECT PENETRATIONS.

RUNWAY 19

PART 77 SURFACE OBSTRUCTION TABLE (INNER PORTION RW 19)

ID #	DESCRIPTION	STATION/OFFSET	ELEVATION	SURFACE PENETRATED	SURFACE ELEVATION	AMOUNT PENETRATION	DISPOSITION	STAGE TO CORRECT
	NONE							

NOTE: REFER TO THE AIRPORT AIRSPACE DRAWING FOR PENETRATIONS OF THE OUTER APPROACH SURFACES.

NOTES:

- THE CONTROLLING OBSTRUCTION FOR RUNWAY 19 IS A ROAD AT STA 45+81, 280L, ELEVATION 41.4'. THE OBSTRUCTION CLEARANCE SLOPE IS ESTABLISHED AS 20:1 PER FAA AC 150/5200-35A, CHAPTER 4, DATA ELEMENT NUMBER 57.
- THERE ARE NO THRESHOLD SITING SURFACE OBJECT PENETRATIONS.

BY	DATE	REVISION

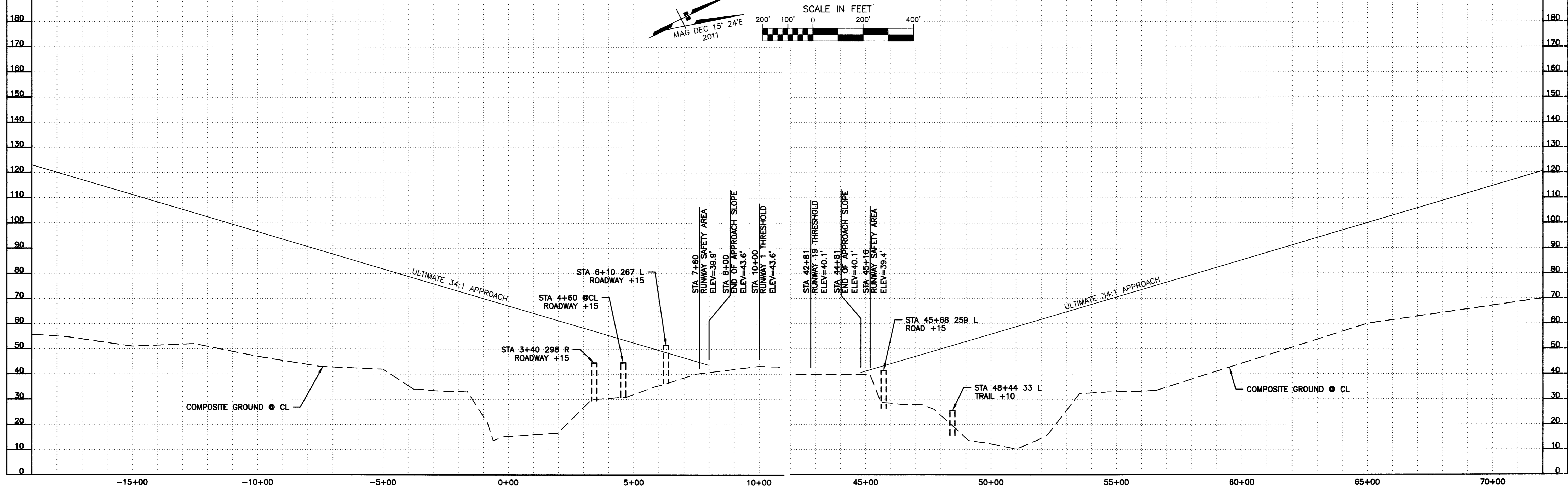
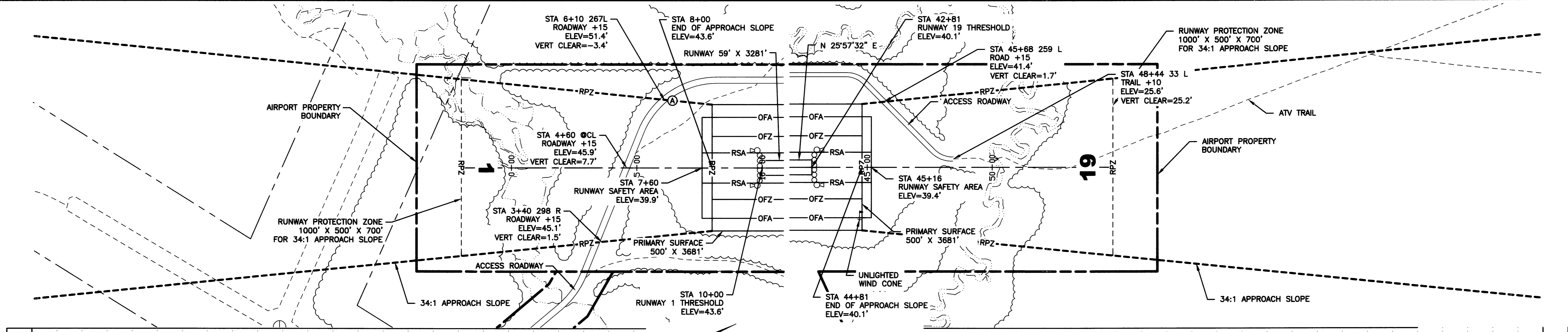
STATE OF ALASKA
DEPARTMENT OF TRANSPORTATION
AND PUBLIC FACILITIES
CENTRAL REGION

LEVELOCK AIRPORT
 LEVELOCK, ALASKA
 AIRPORT LAYOUT PLAN

EXISTING INNER PORTION OF
 RW 1/19 APPROACH SURFACE

DATE: 03/26/2013
 SHEET: 4 OF 8

Date Plotted: 4/03/2013, 1:54 PM
 Layout Name: UAPP_1(5)
 File Name: W:\Projects\Levelock ALP 2013 Update\Final Drawings\ALP-LEVELOCK.dwg
 Designed By: vgroeschel
 Drawn By: rrbryant
 Checked By: blanson



RUNWAY 1

PART 77 SURFACE OBSTRUCTION TABLE (INNER PORTION RW 1)

ID #	DESCRIPTION	STATION/OFFSET	ELEVATION	SURFACE PENETRATED	SURFACE ELEVATION	AMOUNT PENETRATION	DISPOSITION	STAGE TO CORRECT
(A)	ROAD	6+10/267L	51.4	APPROACH	48.0	3.4	REMAIN	NONE

NOTE: REFER TO THE AIRPORT AIRSPACE DRAWING FOR PENETRATIONS OF THE OUTER APPROACH SURFACES.

- NOTES:
- THE CONTROLLING OBSTRUCTION FOR RUNWAY 1 IS A ROAD AT STA:6+52, 267L, ELEVATION 51.4'. THE OBSTRUCTION CLEARANCE SLOPE IS ESTABLISHED AS 18:1 PER FAA AC 150/5200-35A, CHAPTER 4, DATA ELEMENT NUMBER 57.
 - THERE ARE NO THRESHOLD SITING SURFACE OBJECT PENETRATIONS.

RUNWAY 19

PART 77 SURFACE OBSTRUCTION TABLE (INNER PORTION RW 19)

ID #	DESCRIPTION	STATION/OFFSET	ELEVATION	SURFACE PENETRATED	SURFACE ELEVATION	AMOUNT PENETRATION	DISPOSITION	STAGE TO CORRECT
	NONE							

NOTE: REFER TO THE AIRPORT AIRSPACE DRAWING FOR PENETRATIONS OF THE OUTER APPROACH SURFACES.

- NOTES:
- THE CONTROLLING OBSTRUCTION FOR RUNWAY 19 IS A ROAD AT STA 45+81, 280L, ELEVATION 41.4'. THE OBSTRUCTION CLEARANCE SLOPE IS ESTABLISHED AS 20:1 PER FAA AC 150/5200-35A, CHAPTER 4, DATA ELEMENT NUMBER 57.
 - THERE ARE NO THRESHOLD SITING SURFACE OBJECT PENETRATIONS.

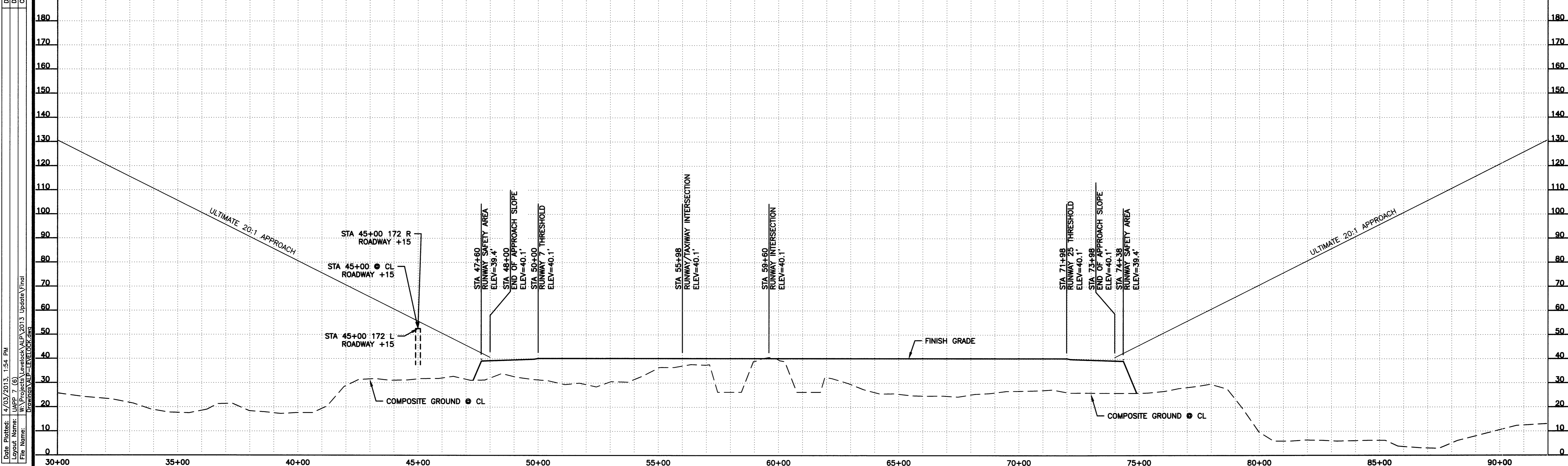
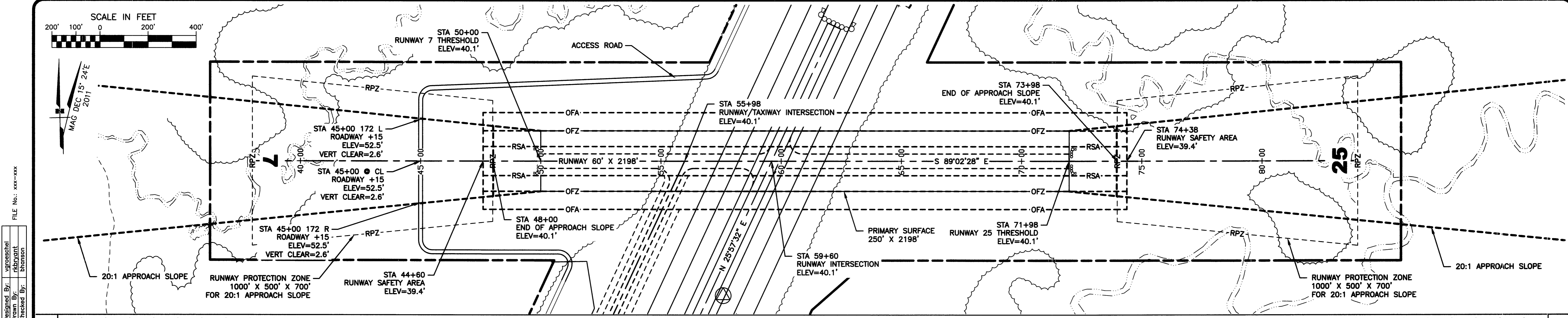
BY	DATE	REVISION

STATE OF ALASKA
DEPARTMENT OF TRANSPORTATION
AND PUBLIC FACILITIES
CENTRAL REGION

LEVELOCK AIRPORT
 LEVELOCK, ALASKA
 AIRPORT LAYOUT PLAN

ULTIMATE INNER PORTION OF
 RW 1/19 APPROACH SURFACE

DATE:
 03/26/2013
 SHEET:
 5
 OF
 8



Date Plotted: 4/03/2013, 1:54 PM
 Layout Name: UAPP 7 (6)
 File Name: W:\Projects\Levelock\ALP 2013 Update\Final Drawings\ALP-LEVELOCK.dwg
 Designed By: vgraschel
 Drawn By: rbryant
 Checked By: blanson
 FILE No.: xxx-xxx

RUNWAY 7

PART 77 SURFACE OBSTRUCTION TABLE (INNER PORTION RW 7)								
ID #	DESCRIPTION	STATION/OFFSET	ELEVATION	SURFACE PENETRATED	SURFACE ELEVATION	AMOUNT PENETRATION	DISPOSITION	STAGE TO CORRECT
	NONE							

NOTE: REFER TO THE AIRPORT AIRSPACE DRAWING FOR PENETRATIONS OF THE OUTER APPROACH SURFACES.

NOTES:

- THE CONTROLLING OBSTRUCTION FOR RUNWAY 7 IS A ROAD AT STA 45+00, OB, ELEVATION 52.5'. THE OBSTRUCTION CLEARANCE SLOPE IS ESTABLISHED AS 20:1 PER FAA AC 150/5200-35A.
- THERE ARE NO THRESHOLD SITING SURFACE OBJECT PENETRATIONS.

RUNWAY 25

PART 77 SURFACE OBSTRUCTION TABLE (INNER PORTION RW 25)								
ID #	DESCRIPTION	STATION/OFFSET	ELEVATION	SURFACE PENETRATED	SURFACE ELEVATION	AMOUNT PENETRATION	DISPOSITION	STAGE TO CORRECT
	NONE							

NOTE: REFER TO THE AIRPORT AIRSPACE DRAWING FOR PENETRATIONS OF THE OUTER APPROACH SURFACES.

NOTES:

- THE CONTROLLING OBSTRUCTION FOR RUNWAY 25 IS A ROAD AT STA 45+00, OB, ELEVATION 52.5'. THE OBSTRUCTION CLEARANCE SLOPE IS ESTABLISHED AS 20:1 PER FAA AC 150/5200-35A.
- THERE ARE NO THRESHOLD SITING SURFACE OBJECT PENETRATIONS.

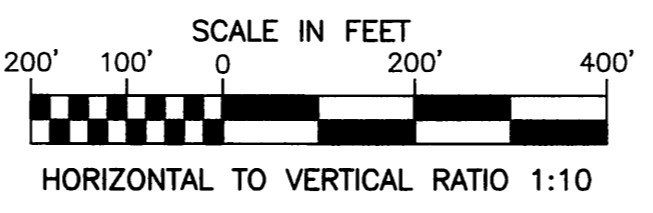
BY	DATE	REVISION

**STATE OF ALASKA
DEPARTMENT OF TRANSPORTATION
AND PUBLIC FACILITIES
CENTRAL REGION**

**LEVELOCK AIRPORT
LEVELOCK, ALASKA
AIRPORT LAYOUT PLAN**

ULTIMATE INNER PORTION OF
RW 7/25 APPROACH SURFACE

DATE:	03/26/2013
SHEET:	6
OF	8



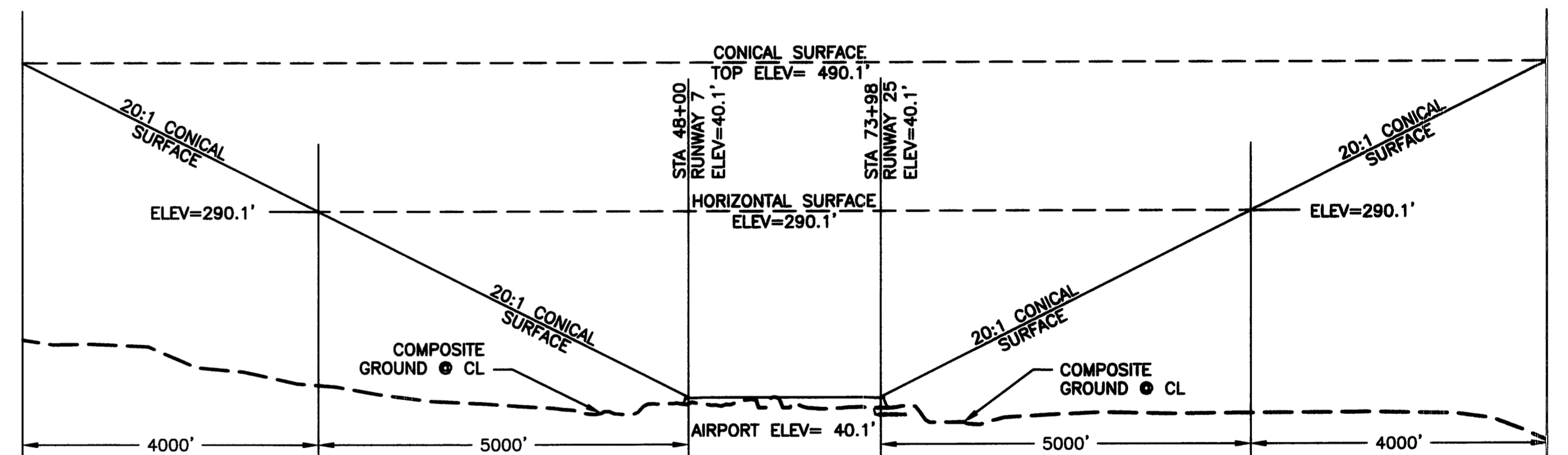
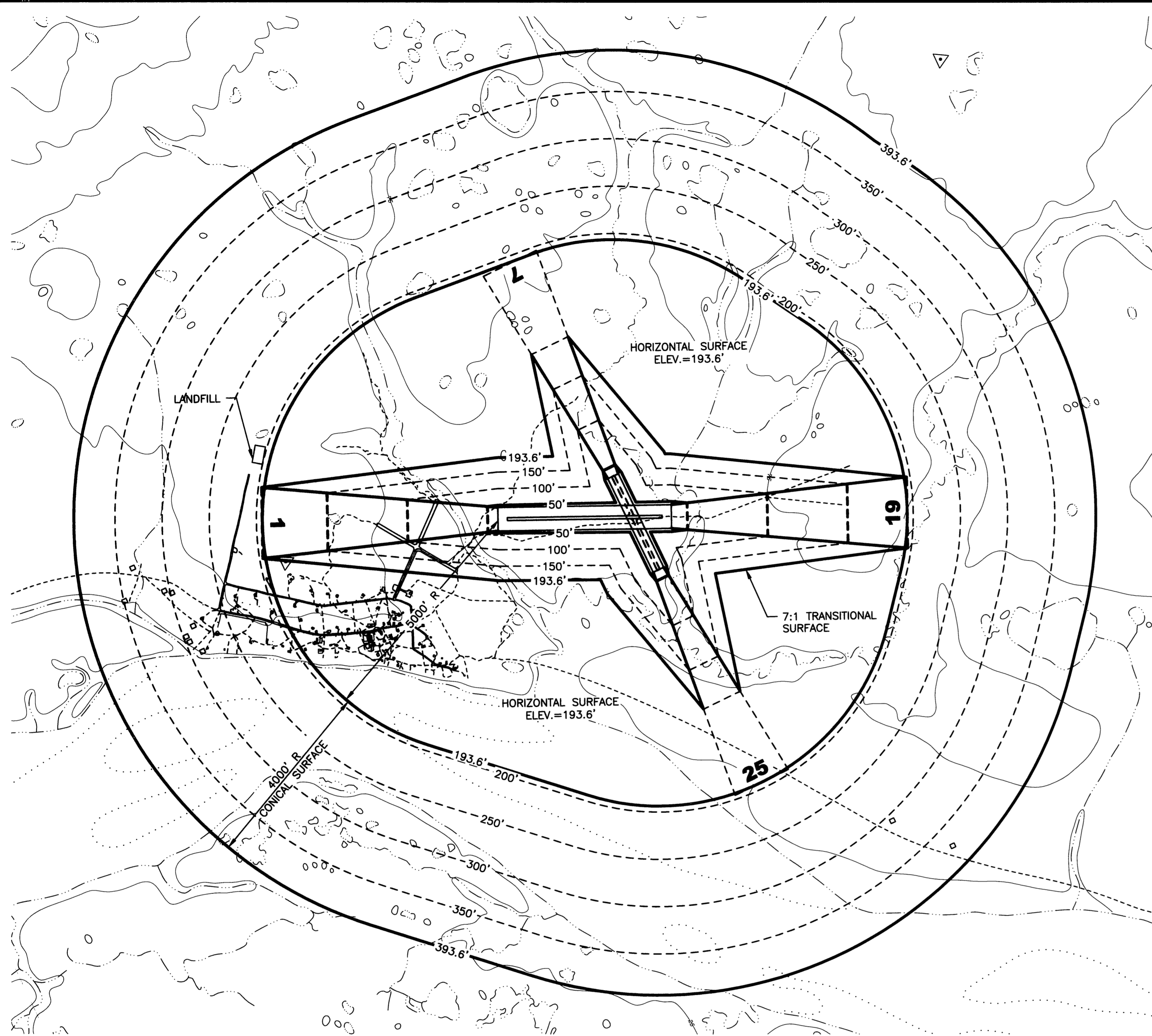
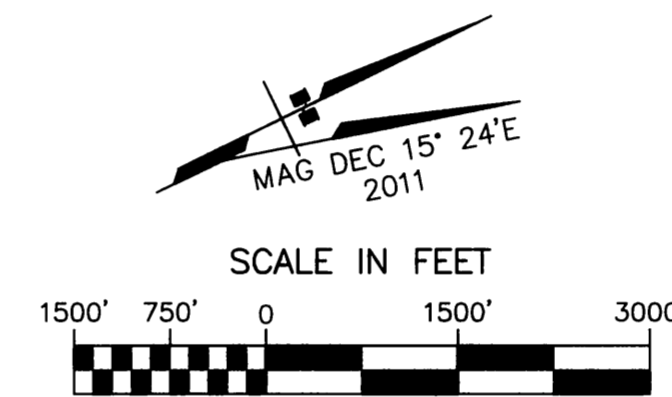
Date Plotted: 4/03/2013, 1:55 PM
 Layout Name: P77 (7)
 File Name: W:\Projects\Levelock\ALPA\2013 Update\Final Drawing\ALP-LEVELOCK.dwg
 Designed By: vgroeschel
 Drawn By: rbbviant
 Checked By: bhanson

PART 77 SURFACE OBSTRUCTION TABLE (OUTER PORTION RW 1/19)								
ID #	DESCRIPTION	STATION/OFFSET	ELEVATION	SURFACE PENETRATED	SURFACE ELEVATION	AMOUNT PENETRATION	DISPOSITION	STAGE TO CORRECT
	NONE							

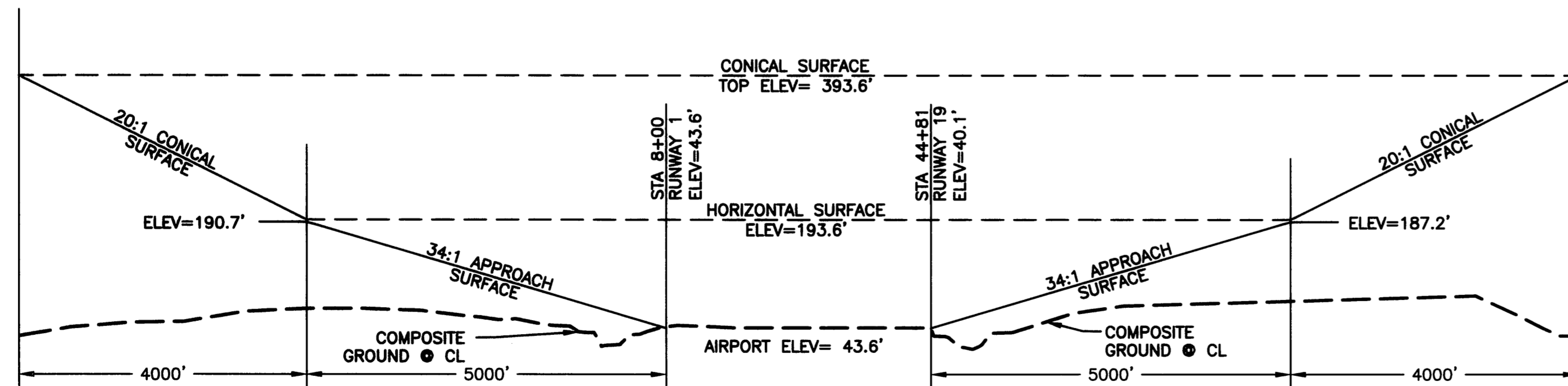
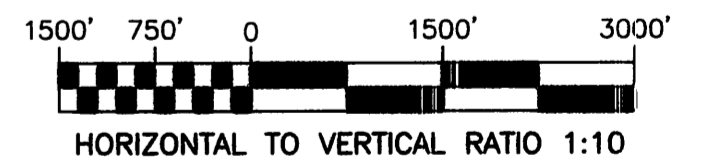
PART 77 SURFACE OBSTRUCTION TABLE (OUTER PORTION RW 7/25)								
ID #	DESCRIPTION	STATION/OFFSET	ELEVATION	SURFACE PENETRATED	SURFACE ELEVATION	AMOUNT PENETRATION	DISPOSITION	STAGE TO CORRECT
	NONE							

NOTES

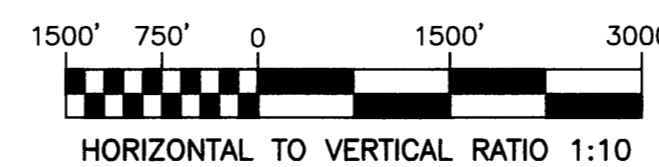
- AIRPORT ELEVATION IS 43.6'.
- RUNWAY 1/19 PRIMARY SURFACE WIDTH IS 500'.
RUNWAY 7/25 PRIMARY SURFACE WIDTH IS 250'
- REFER TO INNER PORTION OF THE APPROACH SURFACE DRAWING FOR CLOSE-IN OBSTRUCTIONS.
- PART 77 SURFACES BASED ON EXISTING AIRPORT LAYOUT.
- LANDFILL LOCATED 5321' FROM NEAREST POINT ON THE RUNWAY.
- THERE ARE NO KNOWN ORDINANCES OR STATUTES IN EFFECT THAT SPECIFY HEIGHT RESTRICTIONS.
- APPROACH SURFACES ARE 20:1 BEGINNING AT THE THRESHOLDS FOR RUNWAY 7/25, AND 34:1 FOR RUNWAY 1/19.



RUNWAY 7/25 PROFILE



RUNWAY 1/19 PROFILE



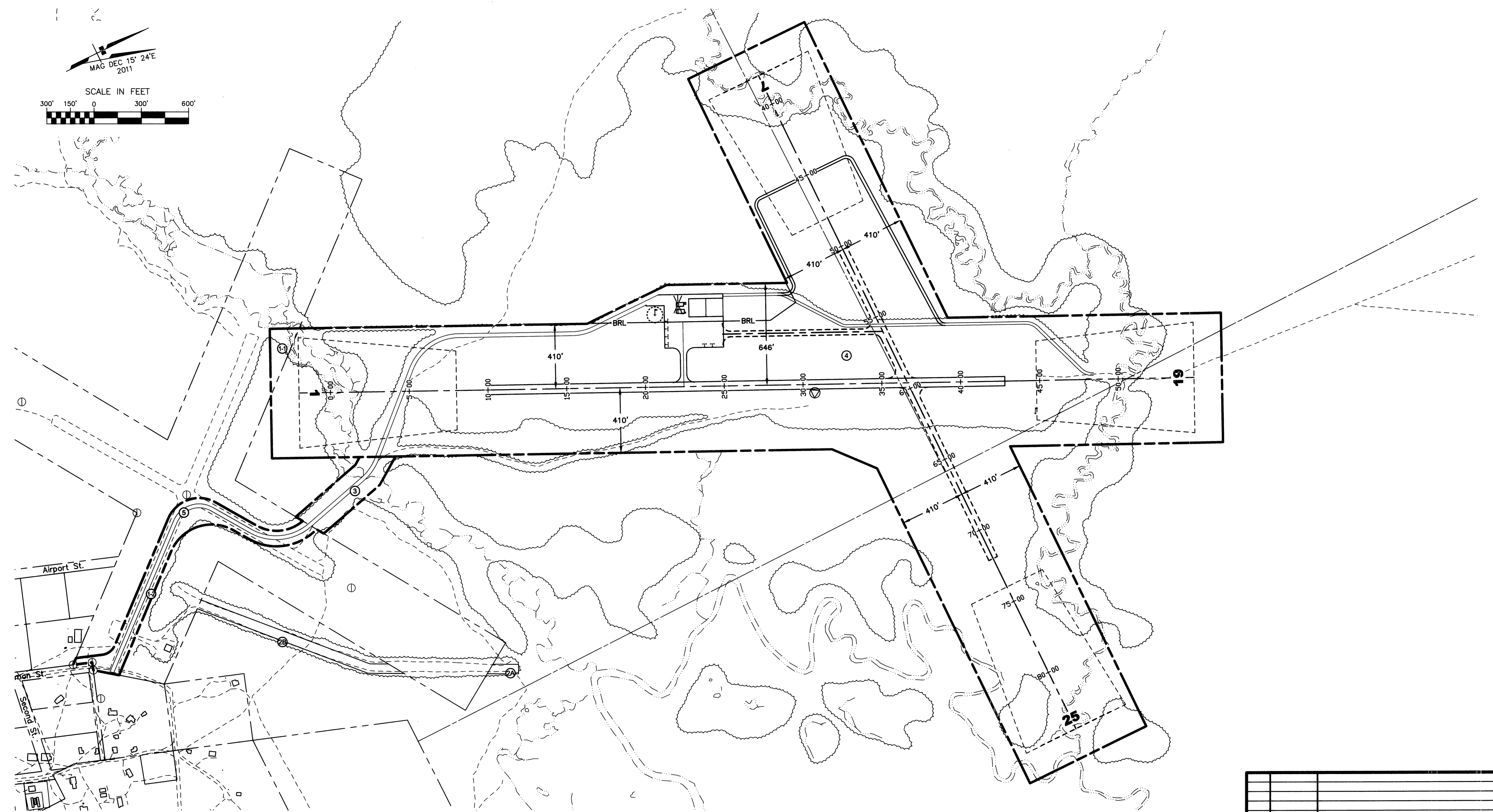
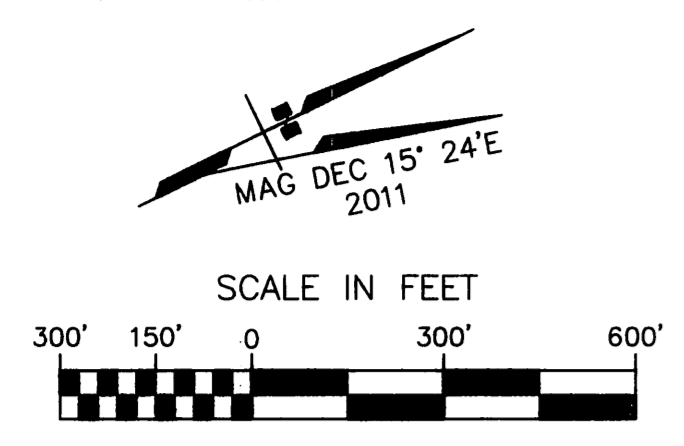
BY	DATE	REVISION

**STATE OF ALASKA
DEPARTMENT OF TRANSPORTATION
AND PUBLIC FACILITIES
CENTRAL REGION**

LEVELOCK AIRPORT LEVELOCK, ALASKA AIRPORT LAYOUT PLAN	DATE: 03/26/2013
	SHEET: 7 OF 8

AIRPORT AIRSPACE,
14 CFR, PART 77

Date Plotted: 4/03/2013, 1:55 PM
 Layout Name: PROP (8)
 File Name: W:\Projects\Levelock ALP\2013 Update\Final Drawings\ALP-LEVELOCK.dwg
 Designed By: vgroeschel
 Drawn By: rkbryant
 Checked By: bhanson
 FILE No.: xxx-xxx



- NOTES:**
- PROPERTIES SHOWN ON THIS AIRPORT LAYOUT PLAN LIE WITHIN THE KVICHAK RECORDING DISTRICT.
 - BOUNDARY DATA BASED UPON 1996 DOT&PF FIELD SURVEY AND RECORD DOCUMENTS.
 - TRACT 1 ACQUIRED BY DOT&PF 9/13/79.
 - TRACT 1 PARCEL 1 AND TRACT 1 PARCEL 2 (PORTIONS OF TRACT 1) TO BE RETAINED BY DOT&PF.
 - THE BASIS OF BEARING IS THE COMPUTED NAD83 STATE PLANE GRID BEARING FROM RECOVERED ALUMINUM MONUMENTS ON OLD RUNWAY 3/21 AT STA 60+00 & STA 72+00 - S 55°19'24" W.
 - THE BASIS OF COORDINATES IS USC&GS STATION LEVELOCK 1946.
 - ALL DISTANCES ARE GROUND DISTANCES REDUCED TO HORIZONTAL IN METERS. METERS TO FOOT CONVERSION FACTOR IS 3937/1200.
 - PROTRACTED SECTION LINES ARE BASED UPON BLM PROTRACTION VALUES INTERPRETED BY ALLPTS. THE PROTRACTED SECTION LINES ARE SHOWN FOR REFERENCE PURPOSES ONLY AND DO NOT CONTROL PROPERTY BOUNDARY LOCATIONS.

ID #	INTEREST	GRANTOR	GRANTEE	PARCEL SIZE	DATE ACQUIRED	RECORDED DOC NO.	ACQUIRED AIP NO.
1, PARCEL 1	RETAINED BY DOT (DOC 2001-000488-0) QCD FEE (SURFACE)	LEVELOCK NATIVES, LTD	STATE OF ALASKA, DOT/PF	0.91 ac ±	9/13/79	BK 15 PG 958	N/A
1, PARCEL 2	RETAINED FEE BY DOT (DOC 2001-000488-0)	LEVELOCK NATIVES, LTD	STATE OF ALASKA, DOT/PF	5.07 ac ±	11/26/01	BK 22 PG 456	N/A
2A	REVERTER CLAUSE IN ORIGINAL DOCUMENT.	STATE OF ALASKA DCRA		0.25 ac ±		BK 15 PG 928	N/A
2B	DOT NO LONGER HAS AN INTEREST.	STATE OF ALASKA DCRA		1.82 ac ±		BK 15 PG 928	N/A
3	FEE (SURFACE)	LEVELOCK NATIVES, LTD	STATE OF ALASKA, DOT/PF	2.79 ac ±	12/29/99	BK 33 PG 313	3-02-0167-01
	FEE (SUBSURFACE)	BRISTOL BAY NATIVE CORP.			12/29/99	BK 33 PG 308	3-02-0167-01
4	FEE (SURFACE)	LEVELOCK NATIVES, LTD	STATE OF ALASKA, DOT/PF	195.19 ac ±	12/10/98	BK 32 PG 040	3-02-0167-01
	FEE (SUBSURFACE)	BRISTOL BAY NATIVE CORP.			12/10/98	BK 32 PG 035	3-02-0167-01
5	FEE	LEVELOCK NATIVES, LTD	STATE OF ALASKA, DOT/PF	0.62 ac ±	6/16/04	2004-00142-0	N/A

BY	DATE	REVISION

**STATE OF ALASKA
DEPARTMENT OF TRANSPORTATION
AND PUBLIC FACILITIES
CENTRAL REGION**

**LEVELOCK AIRPORT
LEVELOCK, ALASKA
AIRPORT LAYOUT PLAN**

AIRPORT PROPERTY MAP

DATE:	03/26/2013
SHEET:	8
OF	8