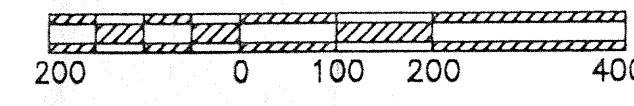
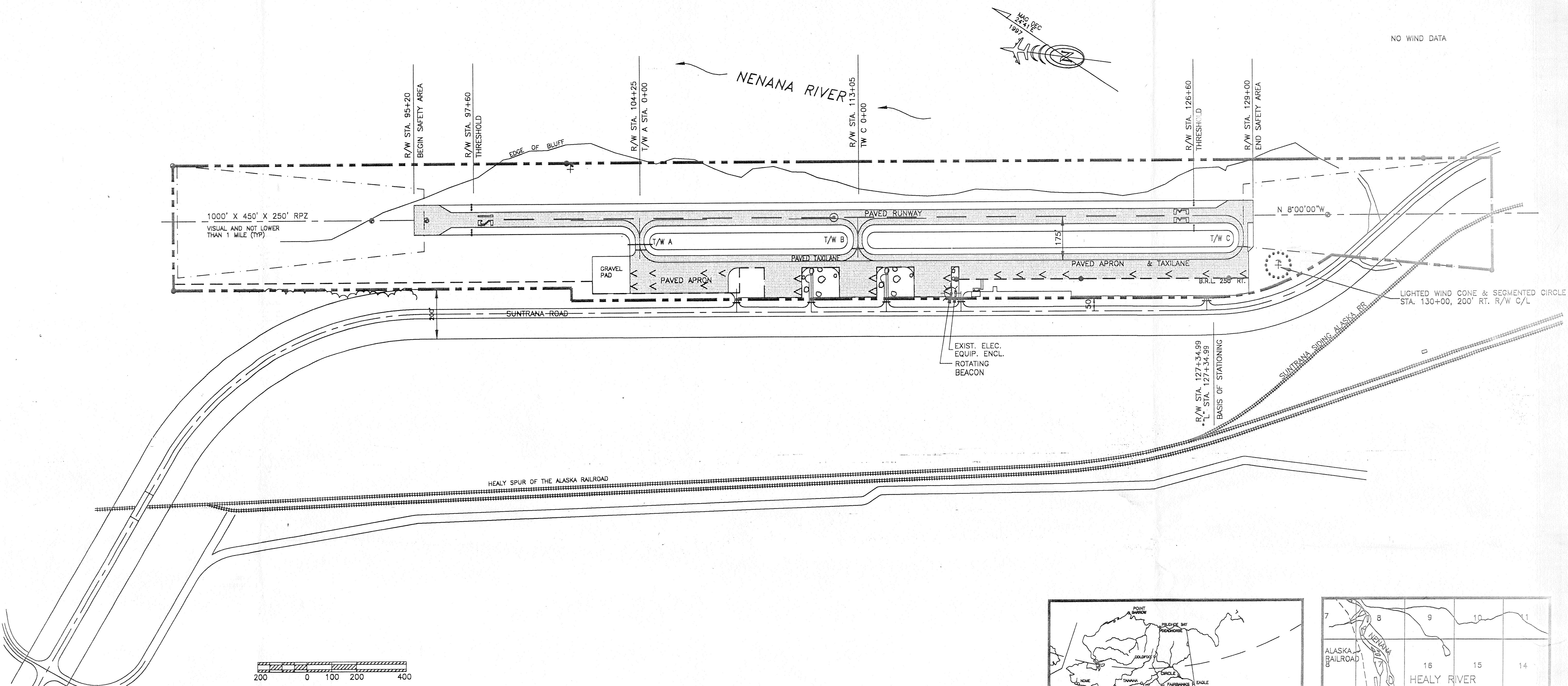


NO WIND DATA



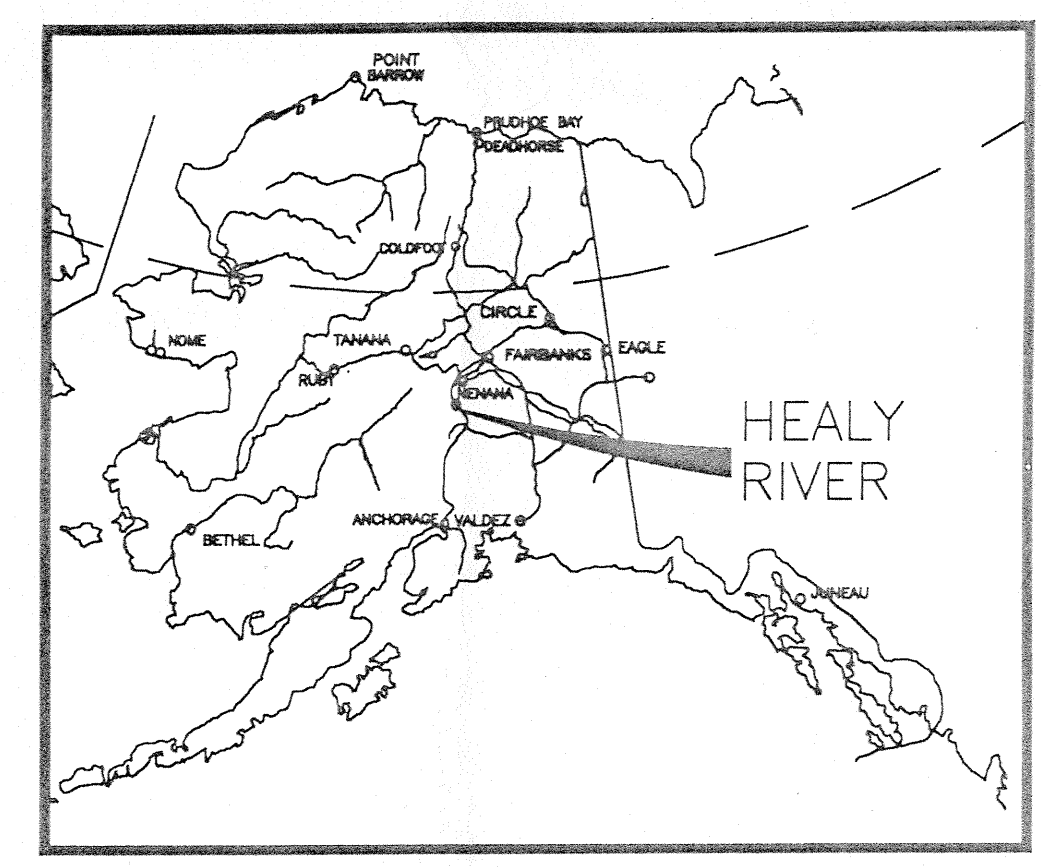
RUNWAY DATA		
	RUNWAY 15-33	
	EXISTING	ULTIMATE
EFFECTIVE GRADIENT	0.83%	SAME
% WIND COVERAGE	NO DATA	SAME
INSTRUMENT RUNWAY	NONE	SAME
RUNWAY SURFACE TYPE	PAVEMENT	SAME
PAVEMENT STRENGTH	12,500	SAME
APPROACH SURFACES	20:1	SAME
RUNWAY LIGHTING	MIRL	SAME
RUNWAY MARKING	VISUAL	SAME
R/W DIMENSIONS	80' X 2900'	SAME
R/W SAFETY AREA	120' X 3380'	SAME
ROFA	400' X 3380'	SAME
T/W A, B, C DIMENSIONS	35' X 150'	SAME
T/W SAFETY AREA WIDTH	80'	SAME
TOFA (T/W A, B, C)	131'	SAME
TAXILANE DIMENSIONS	50' X 2435'	SAME
TAXILANE SAFETY AREA WIDTH	90'	SAME
TOFA (TAXILANE)	115'	SAME

AIRPORT DATA			
	EXISTING	ULTIMATE	
AIRPORT ELEVATION (MSL)	1289.6'	SAME	
AIRPORT REFERENCE CODE	A1	SAME	
MEAN MAX. DAILY TEMP. HOTTEST MONTH (JULY)	87.8°F	SAME	
TAXIWAY LIGHTING	MIL	SAME	
RAMP LIGHTING	NONE	SAME	
AIRPORT AND TERMINAL NAVAIDS	NDB, BEACON	SAME	
COMMUNICATION AIDS	NONE	SAME	
AIRPORT REFERENCE POINT (ARP)	LAT. 83°52'07.35"N		
STA. 112+10	LONG. 148°57'48.34"W		
THRESHOLD STA. 97+600	LAT. 83°51'53.22"N		
	LONG. 148°57'43.84"W		
THRESHOLD STA. 126+60	LAT. 83°52'21.48"N		
	LONG. 148°57'52.84"W		

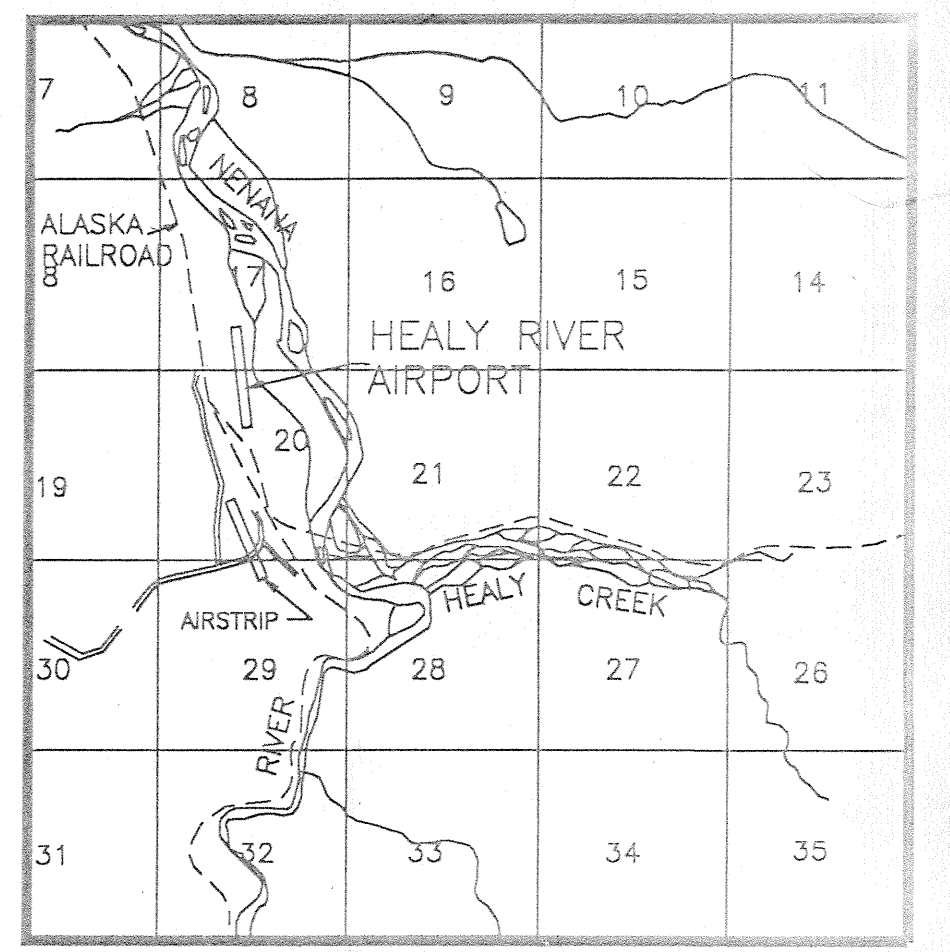
DATA BASE CONTROL YEAR: NAD 83, NVD 29

LEGEND		
	EXISTING	ULTIMATE
PROPERTY LINE	---	---
BUILDING RESTRICTION LINE (B.R.L.)	B.R.L.	SAME
DEVELOPMENT	▭	SAME
WIND CONE & SEGMENTED CIRCLE	⊙	SAME
WIND CONE ONLY	⊙	SAME
BUILDINGS	▭	SAME
ROADWAYS	---	SAME
PAVEMENT	▨	SAME
AIRPORT REFERENCE POINT	⊙	RAILROAD
ROTATING BEACON	⊙	TREELINE
ANTENNA/TOWER	⊙	THRESHOLD
AIRCRAFT TIE-DOWN	<	MONUMENTS

NOTES  
 NO OFZ OBJECT PENETRATIONS.  
 NO THRESHOLD SITING SURFACE OBJECT PENETRATIONS.  
 "L" = SUNTRANA ROAD STATIONING



LOCATION MAP  
NO SCALE



VICINITY MAP  
NO SCALE  
 T12S, R7W, SEC 17 & 20  
 FAIBANKS MERIDIAN, ALASKA  
 USGS HEALY (D-4)

DESIGN_ENB		
DRAWN_CAT		
CHECKED_PDM		
CAT	10/31/97	DATA TABLE CHANGES, HATCHED PVMT
CAT	10/9/97	ADDED T/W AND TAXILANE DATA
BY	DATE	REVISIONS

STATE OF ALASKA  
 DEPARTMENT OF TRANSPORTATION AND PUBLIC FACILITIES  
 NORTHERN REGION-DESIGN AND CONSTRUCTION-AVIATION

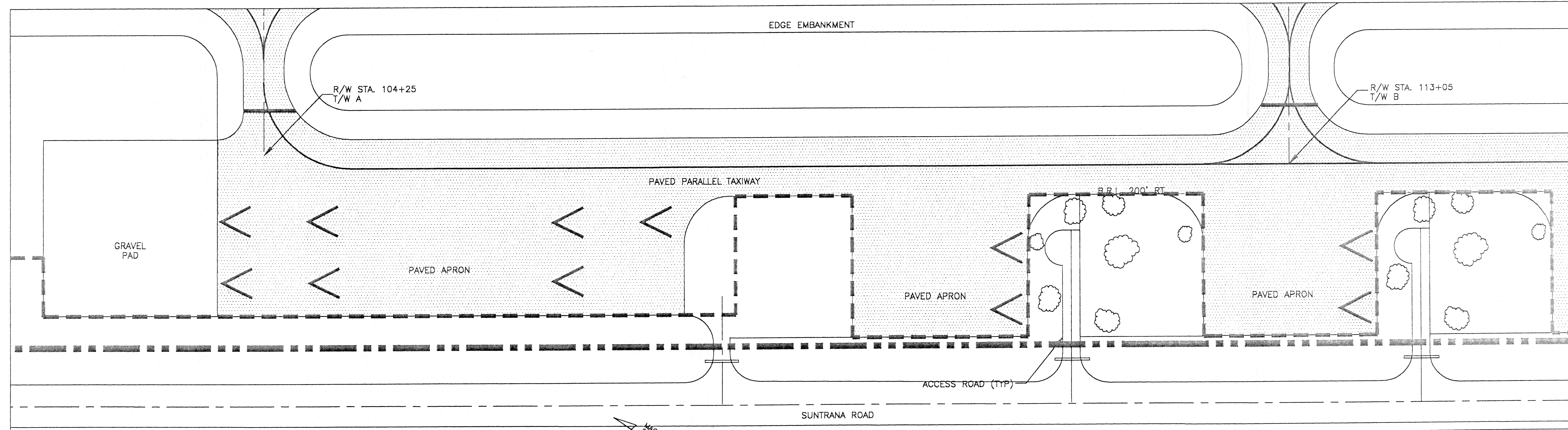
APPROVED  
 S/ *Patricia D. Miller* DATE *9/17/97*  
 FOR DANIEL D. URBACH, P.E. AIRPORT DESIGN GROUP CHIEF

LAYOUT PLAN Conditionally Approved:  
 By *Matt Freeman*  
 AIRPORTS DIVISION, ALASKAN REGION  
 Date *11/7/97*

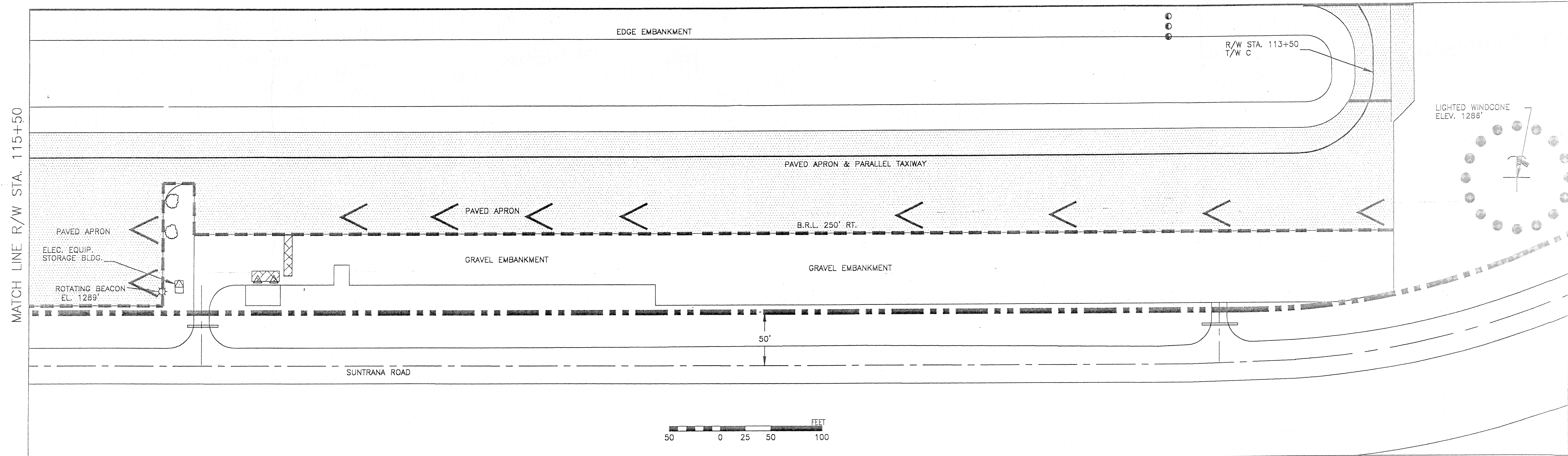
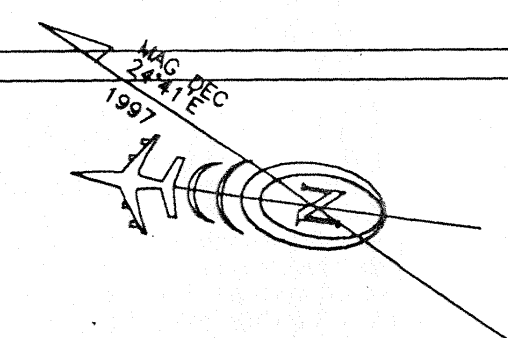
THIS A.L.P. SUPERSEDES A.L.P. DATED 8/11/87 AND  
 FAA APPROVED 8/26/87.  
 THIS A.L.P. WAS PREPARED FROM THE PREVIOUS A.L.P., FROM  
 AS-BUILTS DATED 1995, AND FROM THE PROPERTY PLAN  
 DATED 3-10-87 AND REVISED THROUGH 1-25-95.

HEALY RIVER AIRPORT  
 AIRPORT LAYOUT PLAN

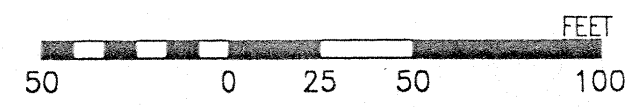
SHEET  
 1 OF 4



MATCH LINE R/W STA. 115+50



MATCH LINE R/W STA. 115+50



DESIGN_ENB
DRAWN_CAT
CHECKED_PDM

BY	DATE	REVISIONS

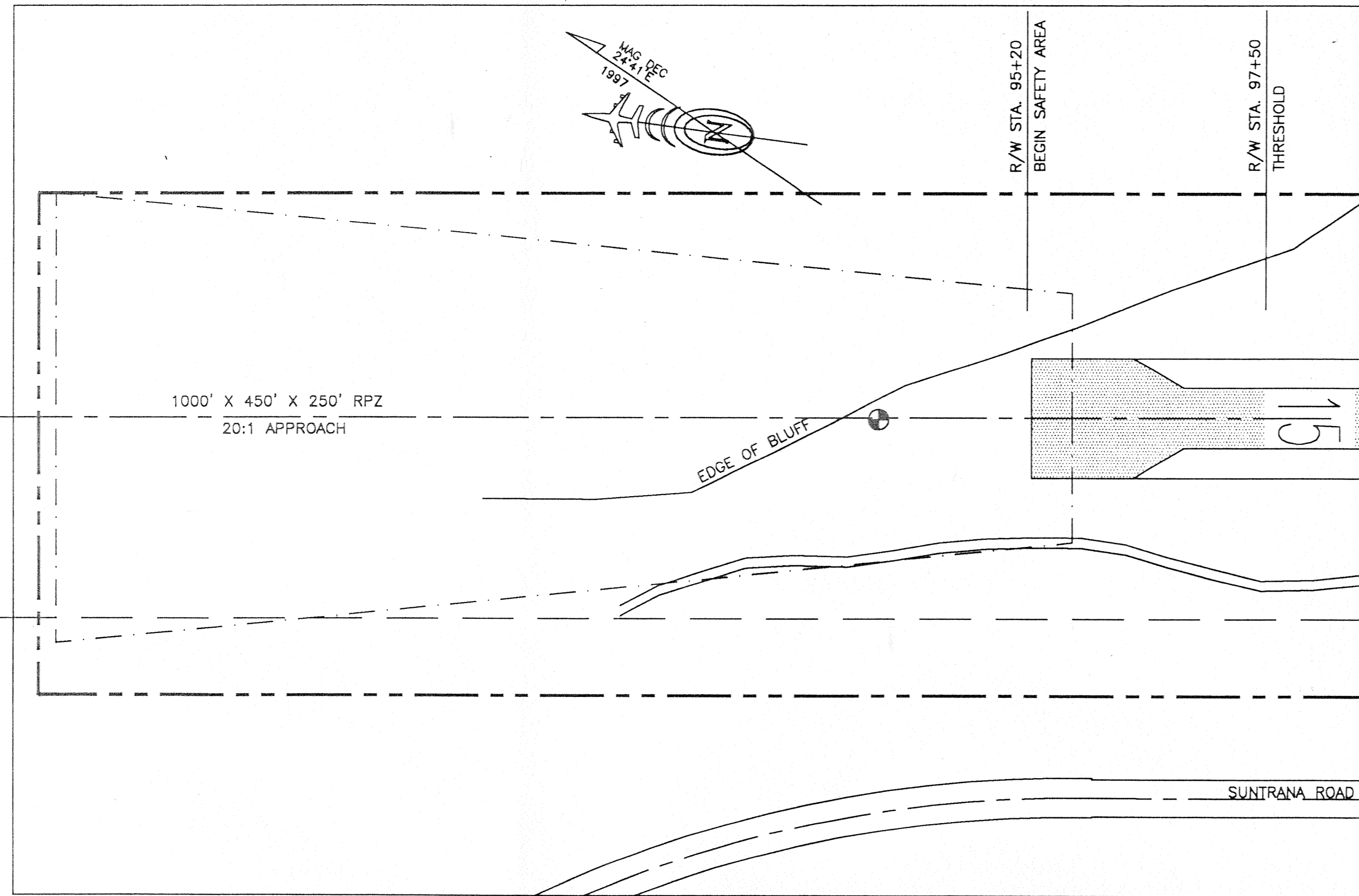
STATE OF ALASKA  
 DEPARTMENT OF TRANSPORTATION AND PUBLIC FACILITIES  
 NORTHERN REGION-DESIGN AND CONSTRUCTION-AVIATION

APPROVED  
 s/ *Patricia D. Miller* DATE *9/17/97*  
 FOR DANIEL D. URBACH, P.E. AIRPORT DESIGN GROUP CHIEF

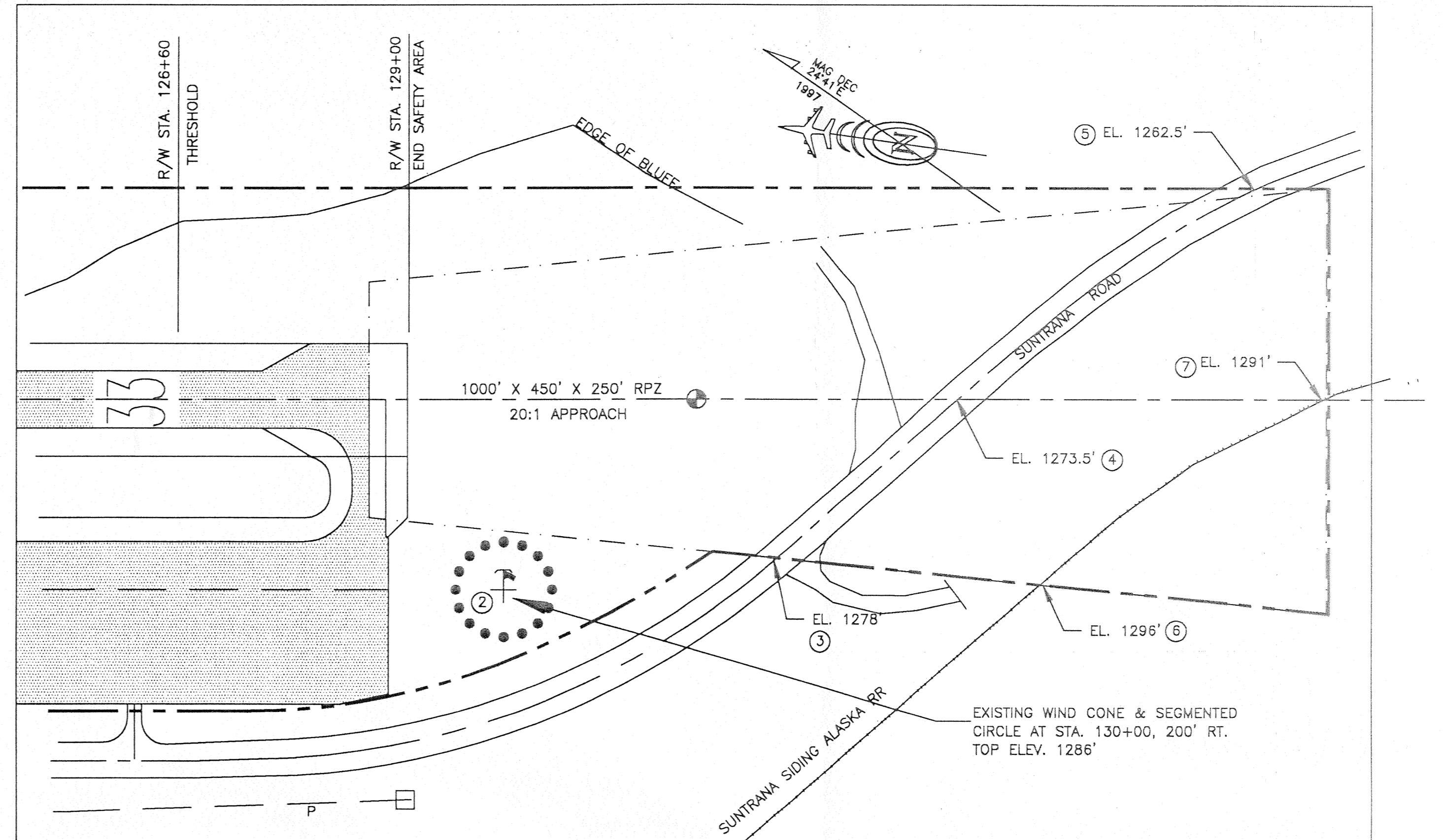
LAYOUT PLAN Conditionally Approved:  
 By *Matt Freeman* AAC-GRD  
 AIRPORTS DIVISION, ALASKAN REGION  
 Date *11/7/97*

HEALY RIVER AIRPORT  
 TERMINAL PLAN

SHEET  
 2 OF  
 4



RPZ 15

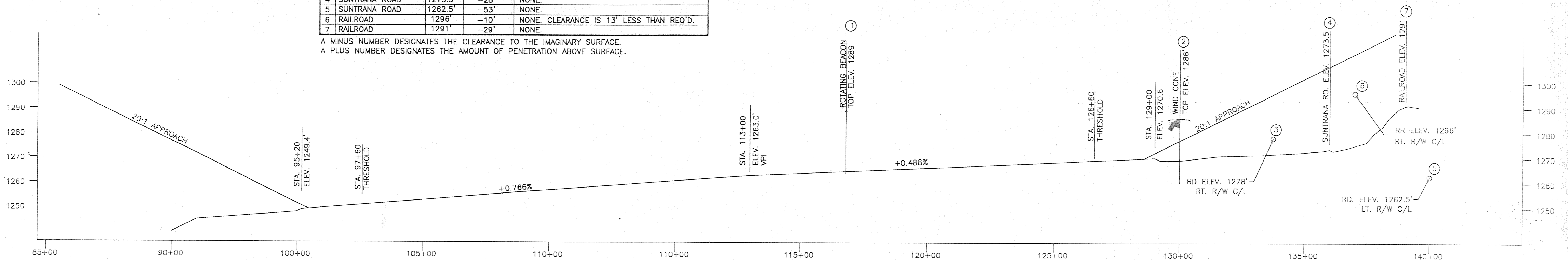


RPZ 33

**OBSTRUCTION TABLE: R/W (#) APPROACH**

#	STRUCTURE NAME	TOP ELEV.	INNER SURFACES PENETRATION	PROPOSED DISPOSITION OF OBSTRUCTION
1	ROTATING BEACON	1289'	-1.5'	NONE.
2	LIGHTED WIND CONE	1280'	+4.5'	NONE. IMPACTS 7:1 SURFACE.
3	SUNTRANA ROAD	1278'	-14'	NONE.
4	SUNTRANA ROAD	1273.5'	-28'	NONE.
5	SUNTRANA ROAD	1262.5'	-53'	NONE.
6	RAILROAD	1296'	-10'	NONE. CLEARANCE IS 13' LESS THAN REQ'D.
7	RAILROAD	1291'	-29'	NONE.

A MINUS NUMBER DESIGNATES THE CLEARANCE TO THE IMAGINARY SURFACE.  
A PLUS NUMBER DESIGNATES THE AMOUNT OF PENETRATION ABOVE SURFACE.



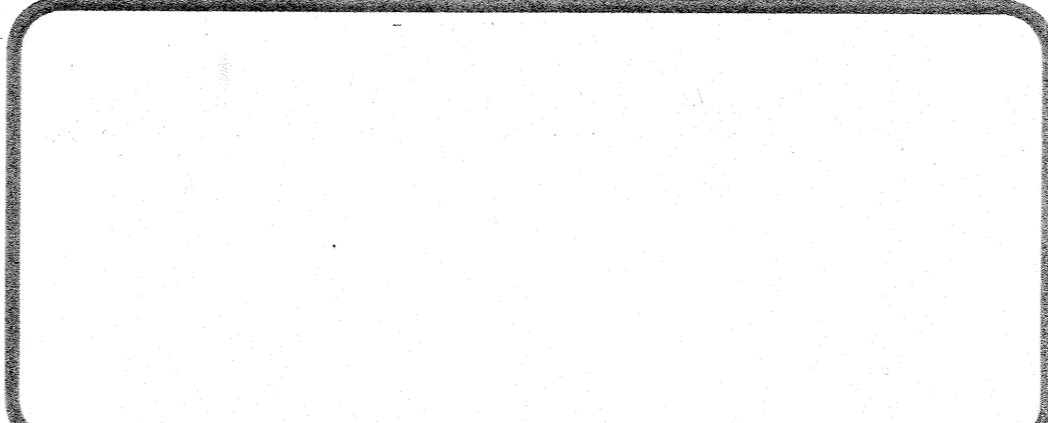
DESIGN ENB  
DRAWN CAT  
CHECKED PDM

BY	DATE	REVISIONS

STATE OF ALASKA  
DEPARTMENT OF TRANSPORTATION AND PUBLIC FACILITIES  
NORTHERN REGION-DESIGN AND CONSTRUCTION-AVIATION

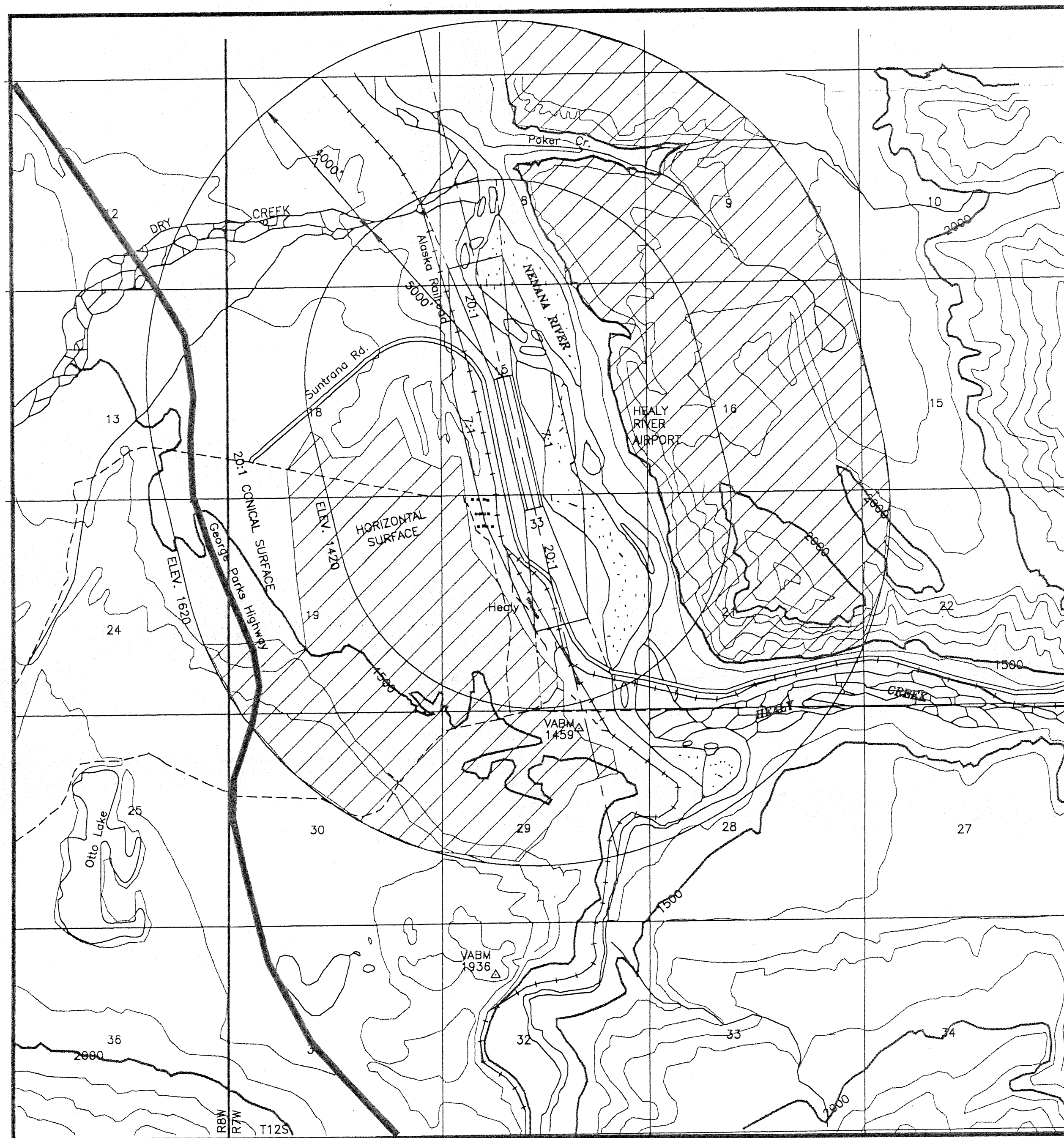
APPROVED  
s/ *Patricia D. Miller* DATE *9/17/97*  
FOR DANIEL D. URBACH, P.E. AIRPORT DESIGN GROUP CHIEF

LAYOUT PLAN Conditionally Approved:  
By *MATT ERSEMAN*  
AIRPORTS DIVISION, ALASKAN REGION  
Date *11/7/97*



HEALY RIVER AIRPORT  
RPZ'S AND PROFILE

SHEET  
3 OF 4



VICINITY MAP  
 SEC 1 & 20, T 12 S, R 7 W,  
 FM, USGS HEALY (D-2) 1976

FEET  
 2000 1000 0 2000 4000

 FAR PART 77 PENETRATIONS

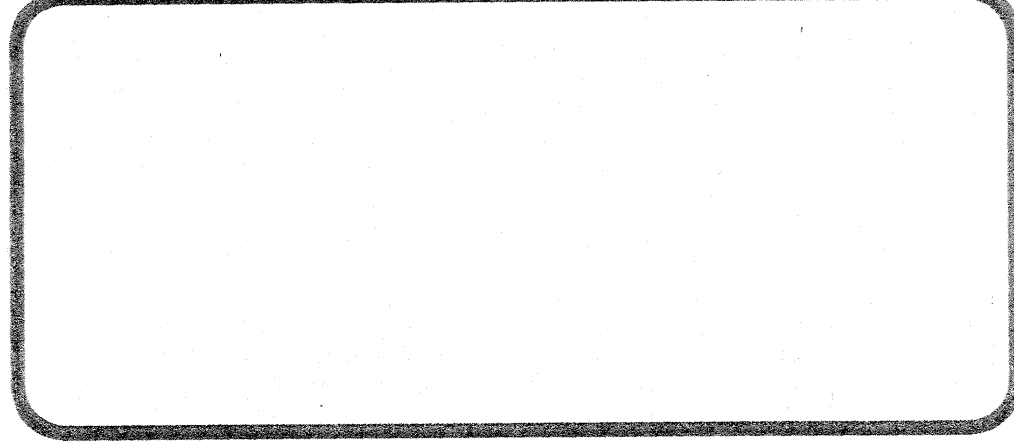
DESIGN ENB  
 DRAWN CAT  
 CHECKED PDM

BY	DATE	REVISIONS

STATE OF ALASKA  
 DEPARTMENT OF TRANSPORTATION AND PUBLIC FACILITIES  
 NORTHERN REGION-DESIGN AND CONSTRUCTION-AVIATION

APPROVED  
 s/ Patricia D. Miller DATE 9/17/97  
 DANIEL D. URBACH, P.E. AIRPORT DESIGN GROUP CHIEF

LAYOUT PLAN Conditionally Approved:  
 By MATT FREEMAN  
 AIRPORTS DIVISION, ALASKAN REGION  
 Date 11/7/97



HEALY RIVER AIRPORT  
 AIRSPACE

SHEET  
4 OF  
4