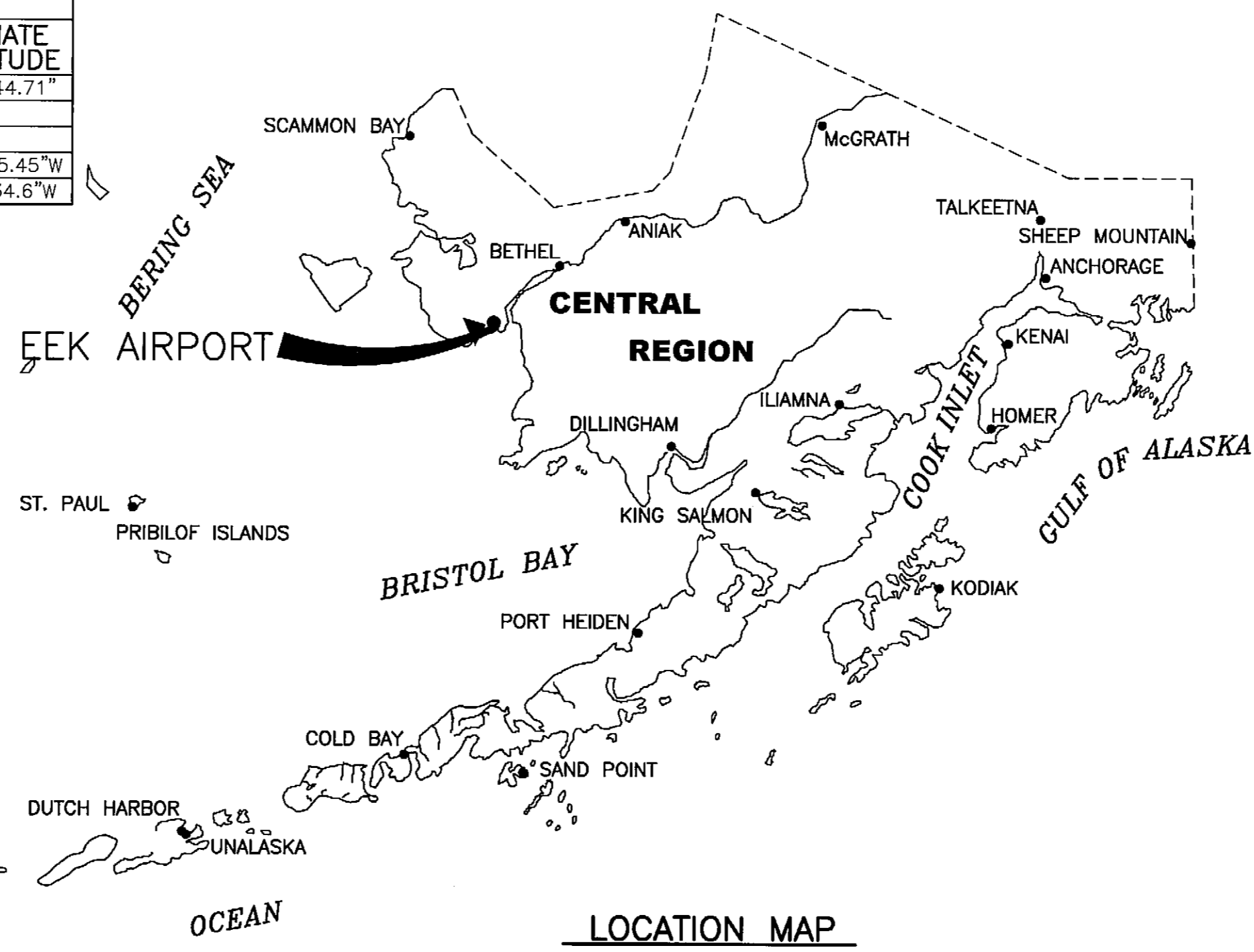


Date Plotted: 11/09/2006, 8:42 AM
 Layout Name: Layout1
 File Name: W:\Projects\Task\ALP-AS\BUILT\2006\Draw-Index.dwg
 Designed By: CFSmith
 Drawn By: CFSmith
 Checked By:

LEGEND		
ITEM	EXISTING	ULTIMATE
AIRPORT REFERENCE POINT (A.R.P.)		
ANTENNA		
BLUFF		
BUILDINGS		
BUILDING RESTRICTION LINE		
FENCE		
PAPI		
PROPERTY LINE		
REIL		
ROADWAYS		
ROTATING BEACON		
SHORELINE		
SURVEY MONUMENT		
THRESHOLD MARKERS/LIGHTS		
TOPOGRAPHIC CONTOURS		
TREE (LARGE SINGLE)		
TREELINE		
VASI		
WIND CONE		
WIND CONE AND SEGMENTED CIRCLE		

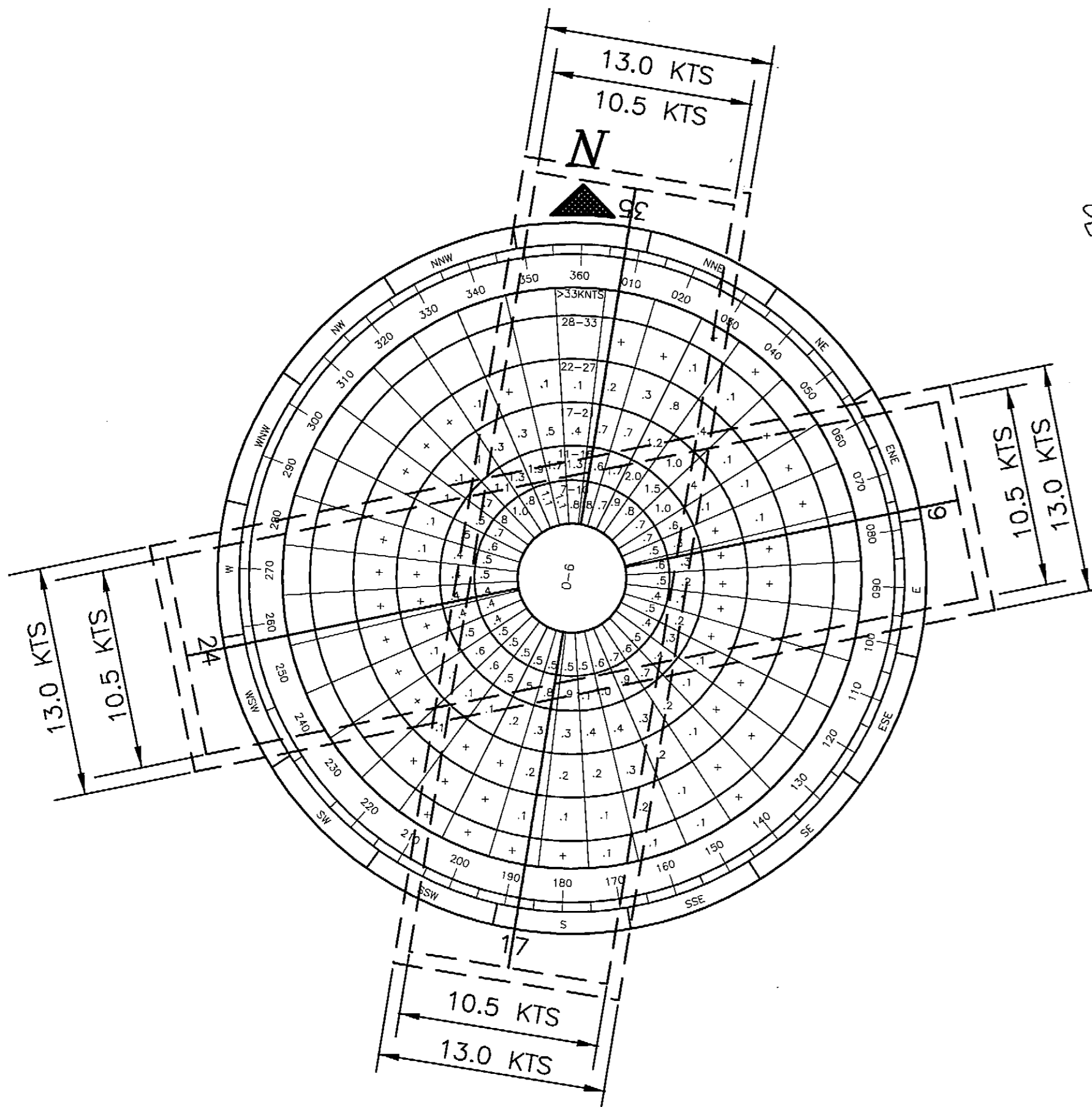
GEOGRAPHIC COORDINATES TABLE				
ITEM	EXISTING LATITUDE	EXISTING LONGITUDE	ULTIMATE LATITUDE	ULTIMATE LONGITUDE
ARP	60°12'49.31"N	162°02'38.06"W	60°12'43.41"	162°02'44.71"
THRESHOLD RW 17	60°13'5.08"N	162°02'32.99"W		
THRESHOLD RW 35	60°12'33.55"N	162°02'43.12"W		
THRESHOLD RW 6			60°12'32.43"N	162°03'15.45"W
THRESHOLD RW 24			60°12'35.6"N	162°02'34.6"W

GEODETIC COORDINATES FROM 2006 RECORD OF SURVEY



AIRPORT DATA TABLE		
ITEM	EXISTING	ULTIMATE
ICAO IDENTIFIER	NONE	NONE
NATIONAL AIRPORT IDENTIFIER	EK	EK
FAA SITE NUMBER	50177*A	50177*A
AIRPORT ELEVATION NAVD88	21.4'	21.4'
AIRPORT REFERENCE CODE	B-1	B-1
MEAN MAX. TEMPERATURE, HOTTEST MONTH	60° F	60° F
AIRPORT AND TERMINAL NAVIGATION AIDS	ROTATING BEACON	ROTATING BEACON
TAXIWAY LIGHTING/MARKING	M. I.	M. I.
OBSTRUCTION SURVEY SOURCE & TYPE	NONE	ANP
MAGNETIC DECLINATION, YEAR, RATE OF CHANGE	14°47' E, 2005	13°49' E, 2010

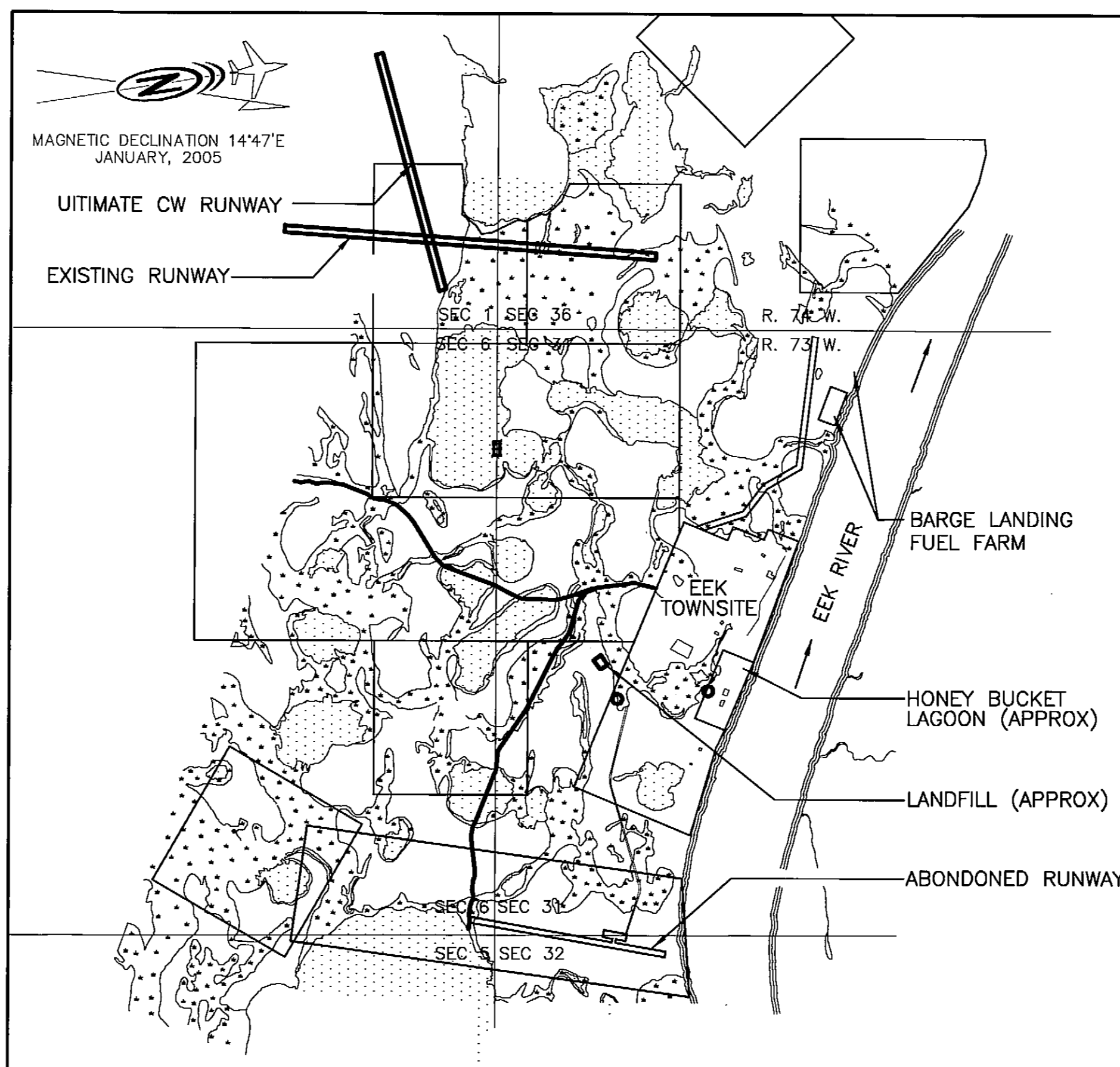
RUNWAY 17/35 DATA TABLE		
ITEM	EXISTING	ULTIMATE
RUNWAY TYPE UTILITY OR OTHER THAN UTILITY	UTILITY	UTILITY
FAR PART 77 APPROACH CATEGORY (V, NPI, P)	NPI	NPI
APPROACH SURFACES	34:1	34:1
VISIBILITY MINIMUM	1 MILE	1 MILE
RUNWAY SURFACE	GRAVEL	GRAVEL
PAVEMENT STRENGTH SW,DW,DTW,DDTW x1000lbs	N/A	N/A
AIRCRAFT APPROACH CATEGORY	B	B
AIRPLANE DESIGN GROUP	I	I
TRUE BEARING	N 9°04'50" E	N 9°04'50" E
EFFECTIVE GRADE	0.06 %	0.06 %
TOUCHDOWN ELEVATION NAVD88	21.4'/21.4'	21.4'/21.4'
RUNWAY DIMENSIONS	60' x 3242'	60' x 3242'
RUNWAY SAFETY AREA (RSA) DIMENSIONS	120' x 3723'	120' x 3723'
LENGTH BEYOND R/W END	240'/240'	240'/240'
RUNWAY PROTECTION ZONE (RPZ) DIMENSIONS	500' x 700' x 1000'	500' x 700' x 1000'
RUNWAY OBJECT FREE AREA (OFA) DIMENSIONS	400' x 3723'	400' x 3723'
LENGTH BEYOND R/W END OR STOPWAY	240'/240'	240'/240'
RUNWAY OBSTACLE FREE ZONE (OFZ) DIMENSIONS	400' x 3643'	400' x 3643'
RUNWAY LIGHTING	M.I.	M.I.
RUNWAY MARKING TYPE	NONE	NONE
RUNWAY VISUAL APPROACH AIDS	PAPI, REIL/NONE	PAPI, REIL/NONE



WIND DATA

RW 17/35 WIND COVERAGE: 10.5 KNOTS 88.7%
 RW 6/24 WIND COVERAGE: 10.5 KNOTS 70.3%
 COMBINED COVERAGE: 10.5 KNOTS 94.5%
 SOURCE: ONE YEAR WIND STUDY AT EEK AIRPORT, 1 JAN., 92 TO 31 DEC., 92. CONDUCTED BY ENRI, UAA-ALASKA CLIMATE CENTER, FOR ADOT & PF. EEK ALASKA IS LOCATED 39 NAUTICAL MILES SOUTHWEST OF BETHEL.
 PERIOD: 1992

MODIFICATION TO STANDARDS/ NON STANDARD CONDITIONS			
DESCRIPTION	STANDARD	EXISTING	ULTIMATE
WIND COVERAGE (10.5 KNOTS) COMBINED	95.0%	88.7%	94.5%



VICINITY MAP

NTS
 T 2 N, R 73 W, SEC. 31
 SEWARD MERIDIAN
 U.S.G.S. BAIRD INLET (A-1), ALASKA
 SCALE APPROXIMATELY 1"=1000'

RUNWAY 6/24 DATA TABLE		
ITEM	EXISTING	ULTIMATE
RUNWAY TYPE UTILITY OR OTHER THAN UTILITY	UTILITY	UTILITY
FAR PART 77 APPROACH CATEGORY (V, NPI, P)	NPI	NPI
APPROACH SURFACES	20:1	20:1
VISIBILITY MINIMUM	1 MILE	1 MILE
RUNWAY SURFACE	GRAVEL	GRAVEL
PAVEMENT STRENGTH SW,DW,DTW,DDTW x1000lbs	N/A	N/A
AIRCRAFT APPROACH CATEGORY	B	B
AIRPLANE DESIGN GROUP	I	I
TRUE BEARING	N79° 02' 35" W	N79° 02' 35" W
EFFECTIVE GRADE	0.11 %	0.11 %
TOUCHDOWN ELEVATION NAVD88	17.9' / 17.9'	17.9' / 17.9'
RUNWAY DIMENSIONS	60' x 2095'	60' x 2095'
RUNWAY SAFETY AREA (RSA) DIMENSIONS	120' x 2575'	120' x 2575'
LENGTH BEYOND R/W END	240'/240"	240'/240"
RUNWAY PROTECTION ZONE (RPZ) DIMENSIONS	500' x 700' x 1000'	500' x 700' x 1000'
RUNWAY OBJECT FREE AREA (OFA) DIMENSIONS	400' x 2575'	400' x 2575'
LENGTH BEYOND R/W END OR STOPWAY	240'/240"	240'/240"
RUNWAY OBSTACLE FREE ZONE (OFZ) DIMENSIONS	250' x 2495"	250' x 2495"
RUNWAY LIGHTING	M.I.	M.I.
RUNWAY MARKING TYPE	NONE	NONE
RUNWAY VISUAL APPROACH AIDS	PAPI/REIL	PAPI/REIL

ELEVATIONS ARE NAVD88 BASE ON RECENT RECORD OF SURVEY. SUBTRACT 7.76' TO GET TO PREVIOUS AIRPORT NGVD 29 VERTICAL DATUM.

DRAWING INDEX	
SHT #	TITLE
01	VICINITY MAP, DATA TABLES, AND WINDROSE
02	EXISTING AIRPORT PLAN
03	AIRPORT ULTIMATE DEVELOPMENT PLAN
04	RUNWAY 17/35 INNER APPROACH
05	RUNWAY 6/24 INNER APPROACH
06	F.A.R. PART 77
07	AIRPORT PROPERTY MAP

BY DATE	REVISION
APPROVED:	DATE: 4/25/07
ROBERT A. CAMBELL, P.E. PRECONSTRUCTION ENGINEER RECOMMENDED:	DATE: 4/25/2007
HARVEY B. POUTHIT, P.E. DESIGN SECTION CHIEF	
AIRPORT LAYOUT PLAN CONDITIONAL APPROVAL SUBJECT TO ALP APPROVAL LETTER DATED 2/7/2007 FAA AIRSPACE REVIEW NUMBER:00-AAL-97AAL-112NRA	
DATE: 2/7/2007 FAA AIRPORTS DIVISION ALASKAN REGION, AAL-612	

STATE OF ALASKA DEPARTMENT OF TRANSPORTATION AND PUBLIC FACILITIES CENTRAL REGION	
EEK AIRPORT EEK, ALASKA AIRPORT LAYOUT PLAN VICINITY MAP, DATA TABLES, AND WINDROSE	DATE: 7/7/06 SHEET: 1 OF 7



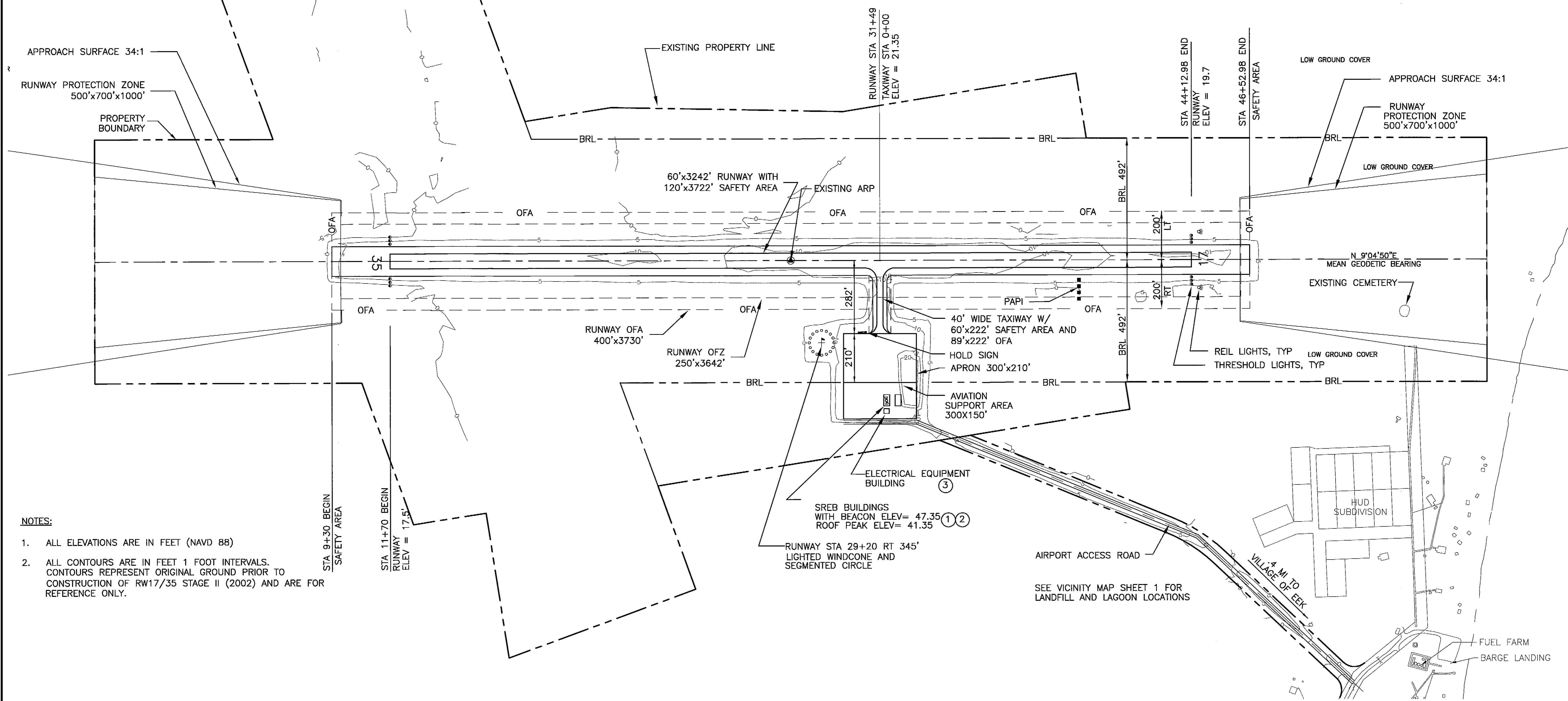
MAGNETIC DECLINATION 14°47'E
JANUARY 2005



HORIZONTAL GRAPHIC SCALE

BUILDING DATA TABLE				
ID #	DESCRIPTION	STATION/OFFSET	TOP ELEV (MSL)	OBSTRUCT MARKING
1	SREB #1	31+76/542' RT	48'	
2	SREB #2	32+22/542' RT	41'	
3	AIRPORT ELEC. EQUIP.	31+76/598' RT	29'	

Date Plotted: 11/09/2006, 9:10 AM
 Layout Name: existing
 File Name: W:\Projects\EEK\ALP-AS\BUILT_2006\EEK_ALP.dwg
 Designed By: CRSmith
 Drawn By:
 Checked By:



- NOTES:**
- ALL ELEVATIONS ARE IN FEET (NAVD 88)
 - ALL CONTOURS ARE IN FEET 1 FOOT INTERVALS. CONTOURS REPRESENT ORIGINAL GROUND PRIOR TO CONSTRUCTION OF RW17/35 STAGE II (2002) AND ARE FOR REFERENCE ONLY.

BY	DATE	REVISION

STATE OF ALASKA
DEPARTMENT OF TRANSPORTATION
AND PUBLIC FACILITIES
CENTRAL REGION

EEK AIRPORT
 EEK, ALASKA
 AIRPORT LAYOUT PLAN
 EXISTING AIRPORT PLAN

DATE: 7/7/06
 SHEET: 2 OF 7



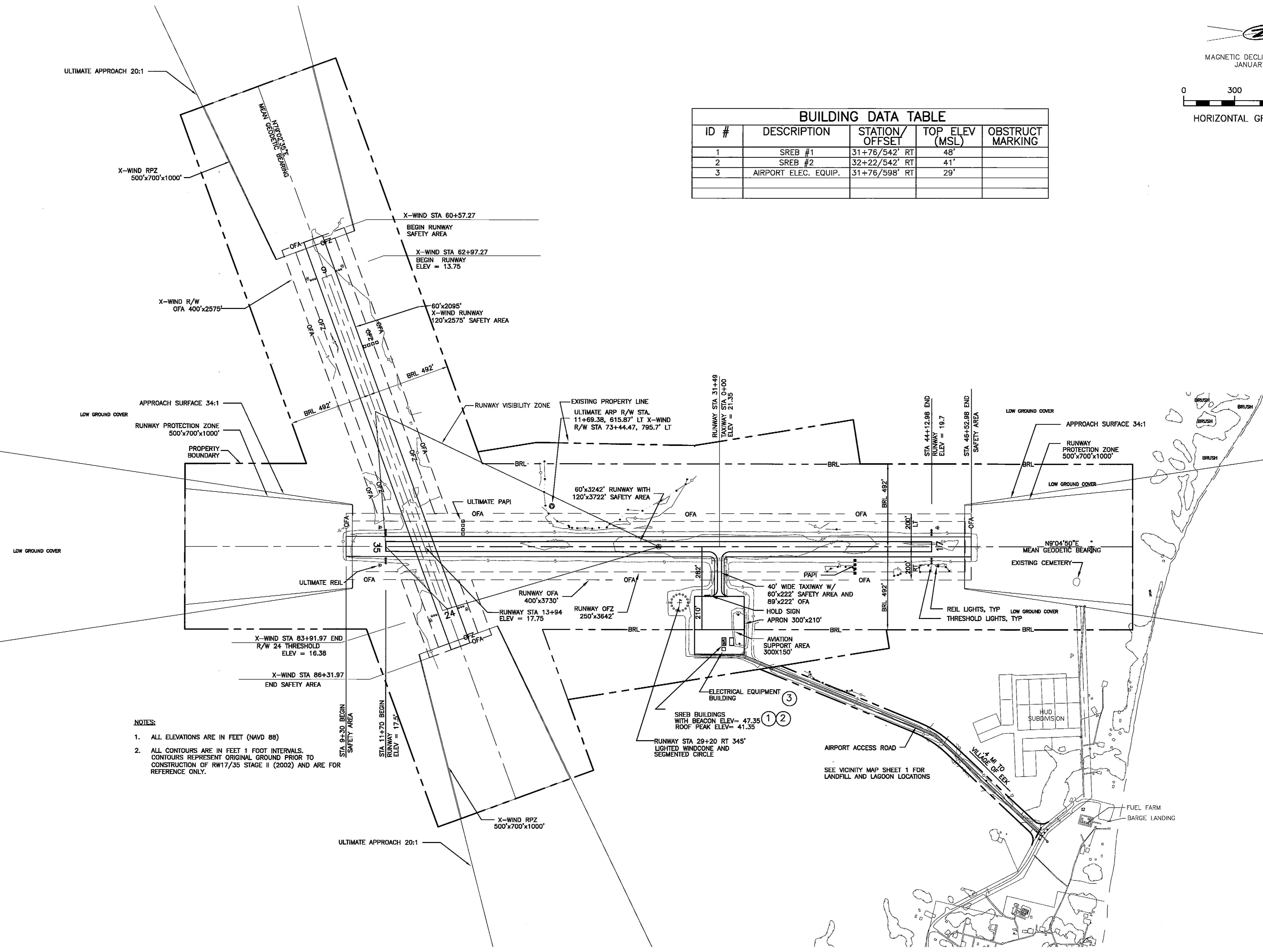
MAGNETIC DECLINATION 14°47'E
JANUARY 2005



HORIZONTAL GRAPHIC SCALE

BUILDING DATA TABLE				
ID #	DESCRIPTION	STATION/OFFSET	TOP ELEV (MSL)	OBSTRUCT MARKING
1	SREB #1	31+76/542' RT	48'	
2	SREB #2	32+22/542' RT	41'	
3	AIRPORT ELEC. EQUIP.	31+76/598' RT	29'	

Date Plotted: 11/09/2006, 9:56 AM
 Layout Name: ultimate
 File Name: W:\Projects\EEK\ALP-AS BUILT 2006\EEK ALP.dwg
 Designed By: CRSmith
 Drawn By:
 Checked By:



- NOTES:**
- ALL ELEVATIONS ARE IN FEET (NAVD 88)
 - ALL CONTOURS ARE IN FEET 1 FOOT INTERVALS. CONTOURS REPRESENT ORIGINAL GROUND PRIOR TO CONSTRUCTION OF RW17/35 STAGE II (2002) AND ARE FOR REFERENCE ONLY.

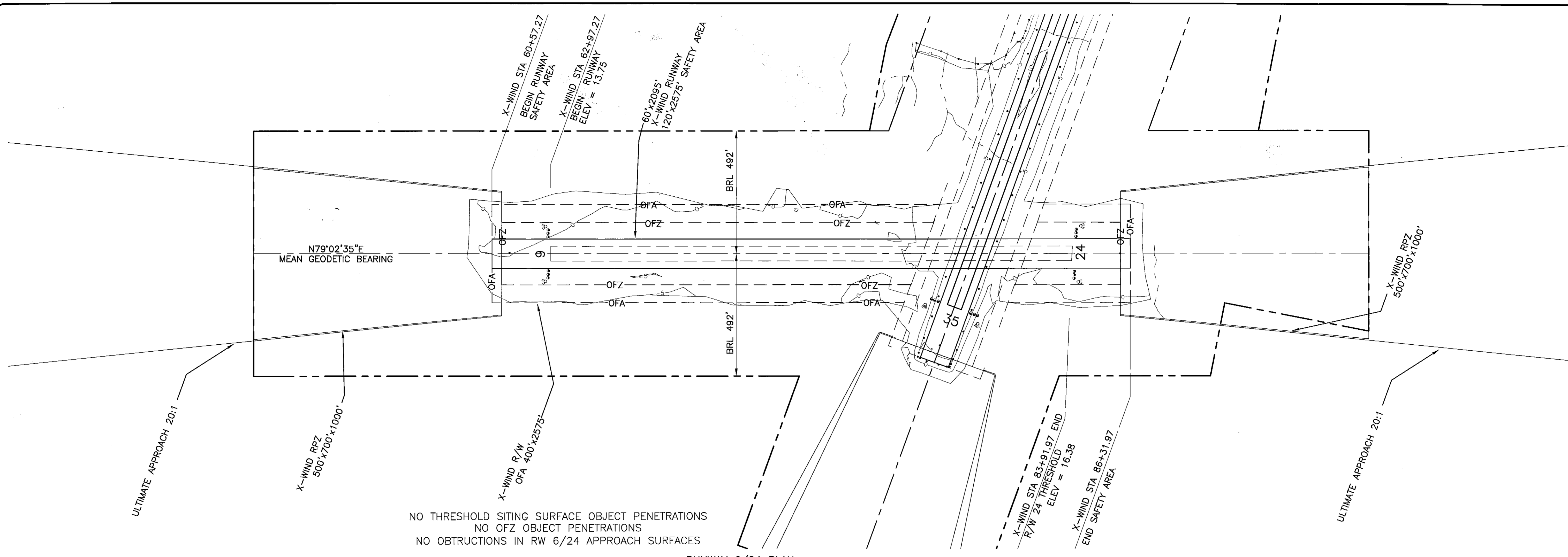
BY	DATE	REVISION

STATE OF ALASKA
DEPARTMENT OF TRANSPORTATION
AND PUBLIC FACILITIES
CENTRAL REGION

EEK AIRPORT
 EEK, ALASKA
 AIRPORT LAYOUT PLAN
 AIRPORT ULTIMATE
 DEVELOPMENT PLAN

DATE: 7/7/06
 SHEET: 3 OF 7

Date Plotted: 11/09/2006, 10:42 AM
 Layout Name: 6-24 PROFILE
 File Name: W:\Projects\Task\ALP-AS\BUILT_2006\Task\ALP.dwg
 Designed By: CRSmith
 Drawn By:
 Checked By:

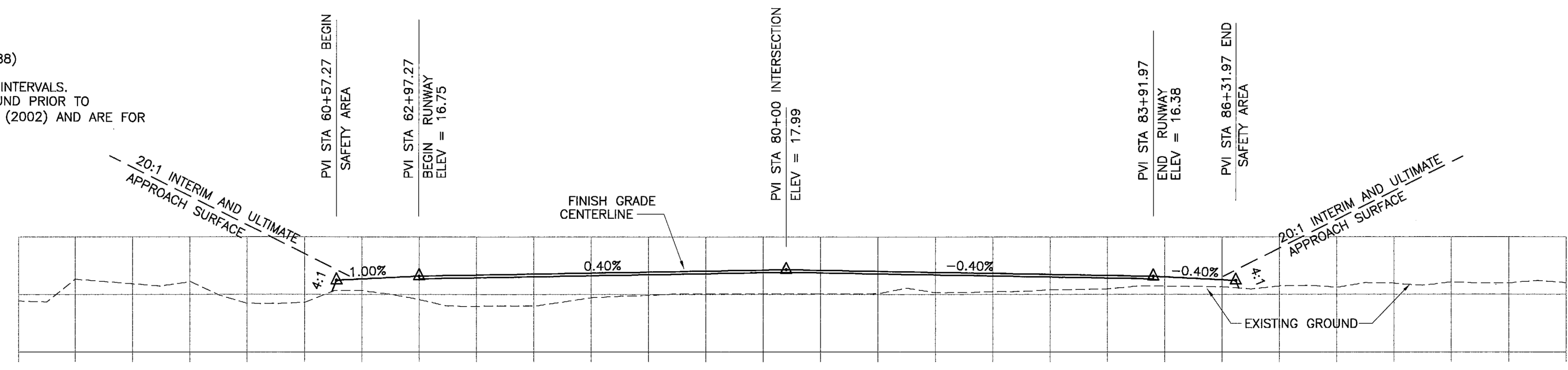


NO THRESHOLD SITING SURFACE OBJECT PENETRATIONS
 NO OFZ OBJECT PENETRATIONS
 NO OBSTRUCTIONS IN RW 6/24 APPROACH SURFACES

RUNWAY 6/24 PLAN

NOTES:

1. ALL ELEVATIONS ARE IN FEET (NAVD 88)
2. ALL CONTOURS ARE IN FEET 1 FOOT INTERVALS. CONTOURS REPRESENT ORIGINAL GROUND PRIOR TO CONSTRUCTION OF RW17/35 STAGE II (2002) AND ARE FOR REFERENCE ONLY.



RUNWAY 6/24 PROFILE

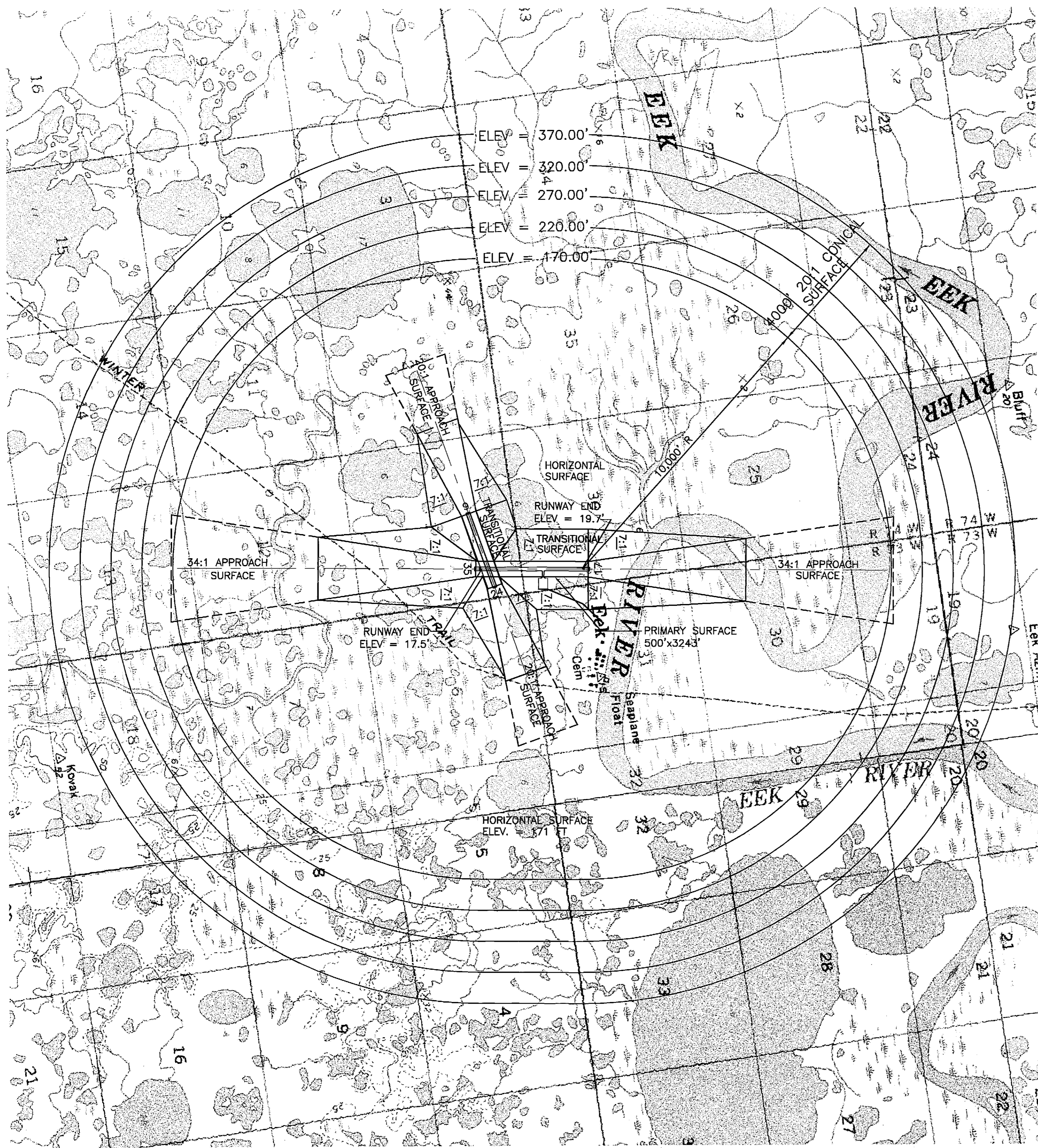
BY	DATE	REVISION

STATE OF ALASKA
DEPARTMENT OF TRANSPORTATION
AND PUBLIC FACILITIES
CENTRAL REGION

EK AIRPORT
 EEK, ALASKA
 AIRPORT LAYOUT PLAN
 RUNWAY 6/24 INNER APPROACH

DATE: 7/7/06
 SHEET: 5 OF 7

Date Plotted: 11/09/2006 1:04 PM
 Layout Name: W:\Projects\EEK\ALP-AS_BUILT_2008\F.A.R.Part_77.dwg
 File Name:
 Designed By: CRS/Smith
 Drawn By:
 Checked By:

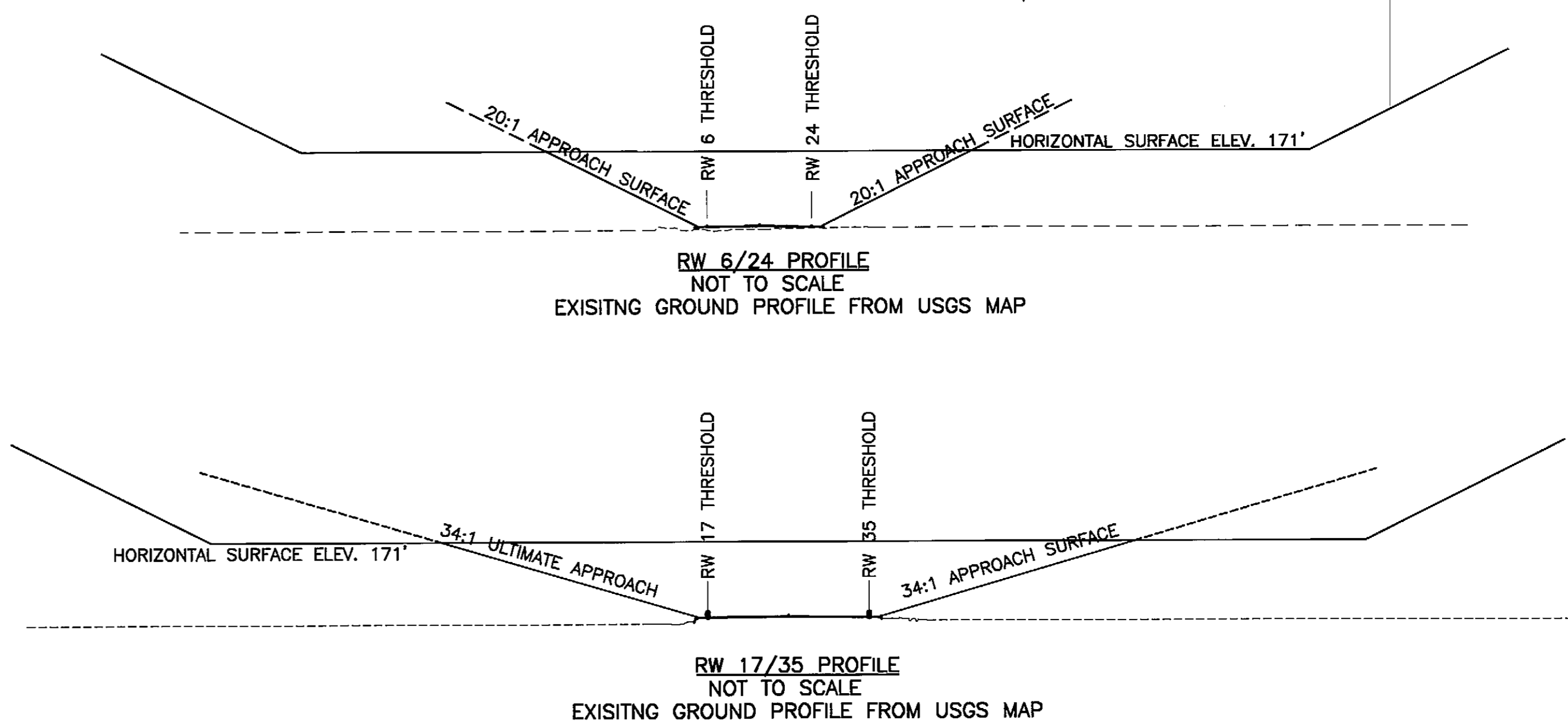
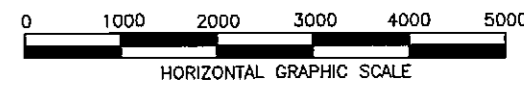


PART 77 SURFACE OBSTRUCTIONS TABLE								
ID #	DESCRIPTION	STATION/OFFSET	ELEVATION	SURFACE PENETRATED	SURFACE ELEVATION	AMOUNT PENTRATION	DISPOSTION	STAGE TO CORRECT
	NONE							

- NOTES:**
1. PRIMARY SURFACE WIDTH IS 500'
 2. DESIGNATED AIRPORT ELEVATION IS 21.4'
 3. ALL CONTOURS ARE IN FEET.



MAGNETIC DECLINATION 14°47'E
JANUARY 2005



BY	DATE	REVISION

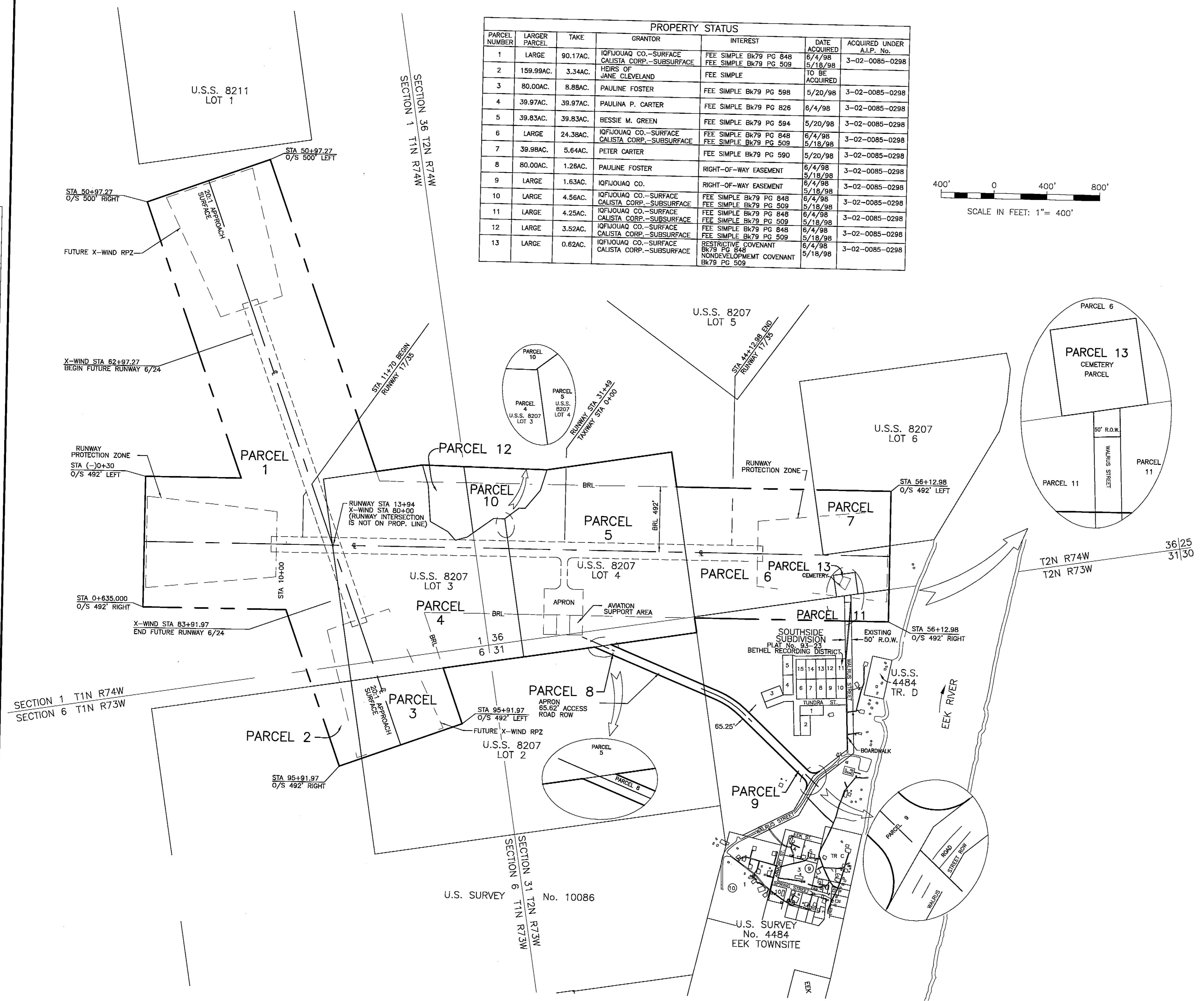
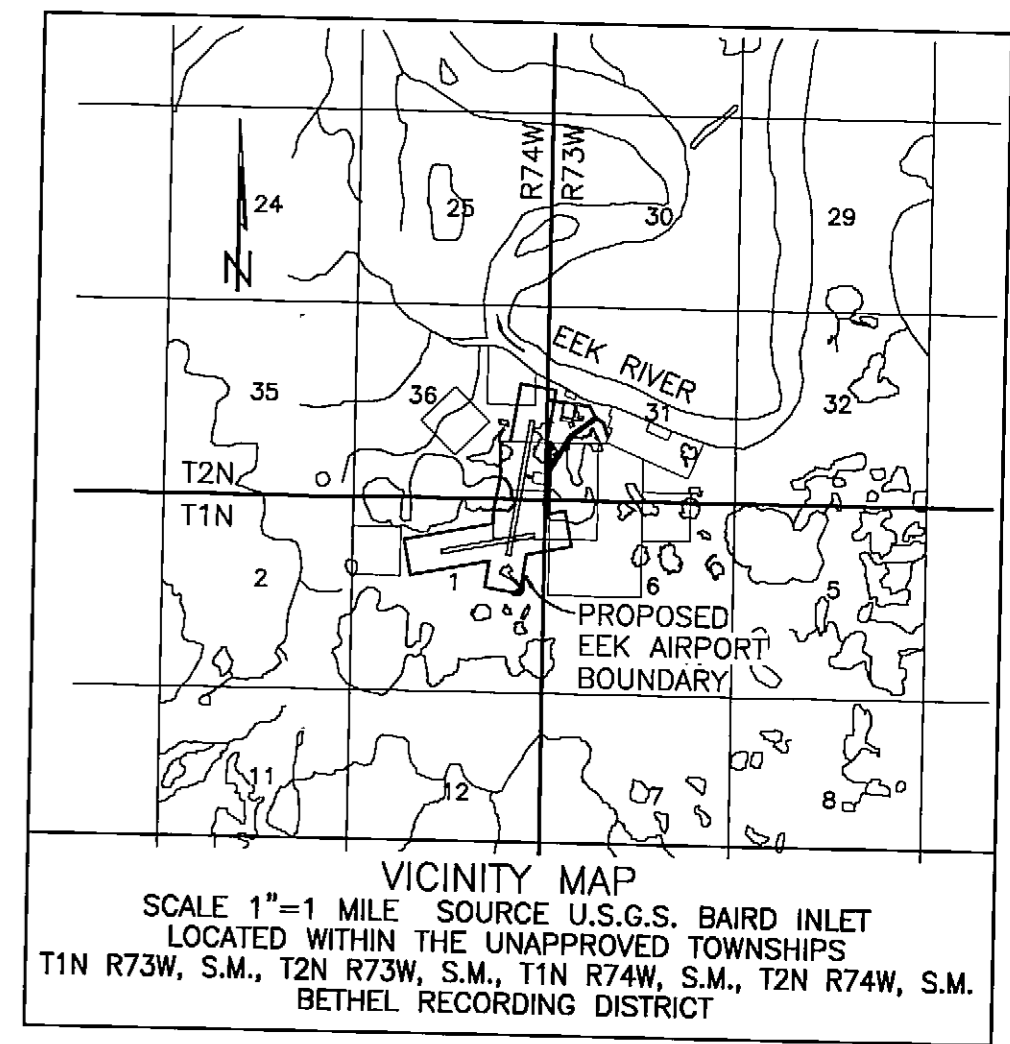
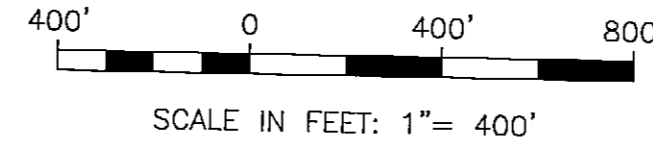
STATE OF ALASKA
DEPARTMENT OF TRANSPORTATION
AND PUBLIC FACILITIES
CENTRAL REGION

EEK AIRPORT
 EEK, ALASKA
 AIRPORT LAYOUT PLAN
 F.A.R. PART 77

DATE: 07/7/06
 SHEET: 6 OF 7

Date Plotted: 11/20/2006, 11:15 AM
 Layout Name: W:\Projects\Eek\ALP-AS BUILT 2006\PropertyMap.dwg
 File Name: W:\Projects\Eek\ALP-AS BUILT 2006\PropertyMap.dwg
 Designed By: CFSmith
 Drawn By:
 Checked By:

PARCEL NUMBER	LARGER PARCEL	TAKE	GRANTOR	INTEREST	DATE ACQUIRED	ACQUIRED UNDER A.I.P. No.
1	LARGE	90.17AC.	IQFJOUAQ CO.-SURFACE	FEE SIMPLE Bk79 PG 848	6/4/98	
2	159.99AC.	3.34AC.	CALISTA CORP.-SUBSURFACE	FEE SIMPLE Bk79 PG 509	5/18/98	3-02-0085-0298
3	80.00AC.	8.88AC.	HEIRS OF JANE CLEVELAND	FEE SIMPLE	TO BE ACQUIRED	
4	39.97AC.	39.97AC.	PAULINE FOSTER	FEE SIMPLE Bk79 PG 598	5/20/98	3-02-0085-0298
5	39.83AC.	39.83AC.	PAULINA P. CARTER	FEE SIMPLE Bk79 PG 826	6/4/98	3-02-0085-0298
6	LARGE	24.38AC.	BESSIE M. GREEN	FEE SIMPLE Bk79 PG 594	5/20/98	3-02-0085-0298
7	39.98AC.	5.64AC.	IQFJOUAQ CO.-SURFACE	FEE SIMPLE Bk79 PG 848	6/4/98	3-02-0085-0298
8	80.00AC.	1.26AC.	CALISTA CORP.-SUBSURFACE	FEE SIMPLE Bk79 PG 509	5/18/98	3-02-0085-0298
9	LARGE	1.63AC.	PETER CARTER	FEE SIMPLE Bk79 PG 590	5/20/98	3-02-0085-0298
10	LARGE	4.56AC.	PAULINE FOSTER	RIGHT-OF-WAY EASEMENT	6/4/98	3-02-0085-0298
11	LARGE	4.25AC.	IQFJOUAQ CO.	RIGHT-OF-WAY EASEMENT	6/4/98	3-02-0085-0298
12	LARGE	3.52AC.	IQFJOUAQ CO.-SURFACE	FEE SIMPLE Bk79 PG 848	6/4/98	3-02-0085-0298
13	LARGE	0.62AC.	CALISTA CORP.-SUBSURFACE	FEE SIMPLE Bk79 PG 509	5/18/98	3-02-0085-0298
				RESTRICTIVE COVENANT Bk79 PG 848	6/4/98	3-02-0085-0298
				NONDEVELOPMENT COVENANT Bk79 PG 509	5/18/98	3-02-0085-0298



LEGEND
 - - - - - EXTERIOR AIRPORT PROPERTY BOUNDARY
 _____ INTERIOR AIRPORT PARCEL BOUNDARY

BY	DATE	REVISION

**STATE OF ALASKA
 DEPARTMENT OF TRANSPORTATION
 AND PUBLIC FACILITIES
 CENTRAL REGION**

Eek AIRPORT
 Eek, ALASKA
 AIRPORT LAYOUT PLAN
 AIRPORT PROPERTY MAP

DATE: 7/7/06
 SHEET: 7 OF 7