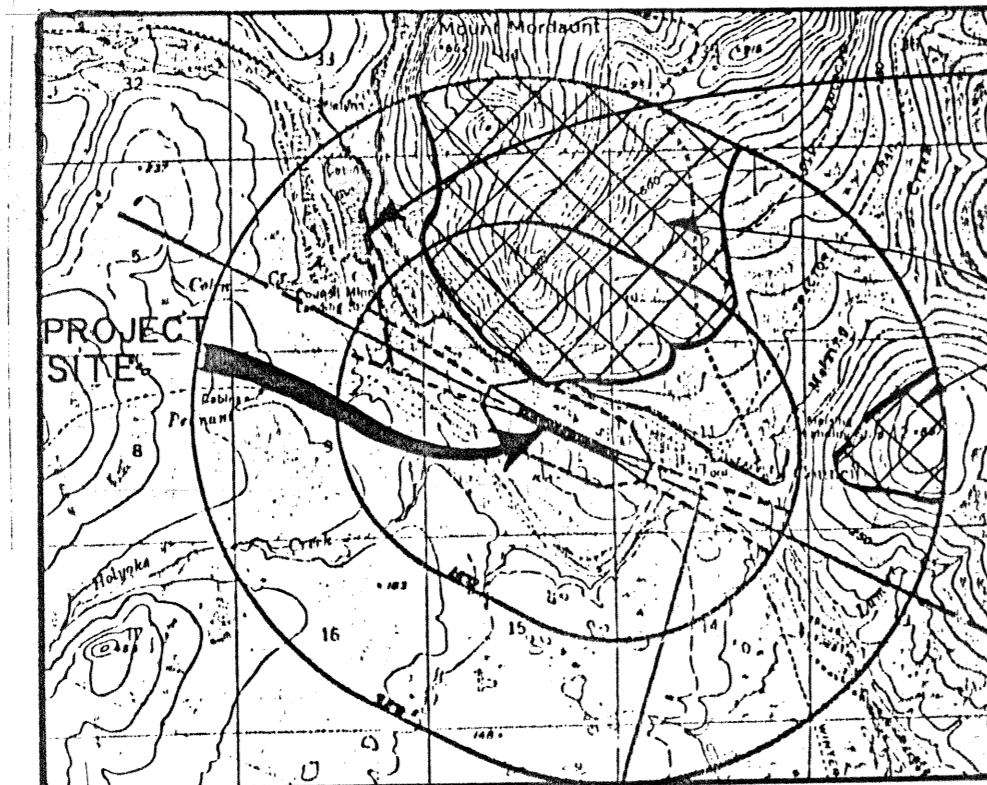


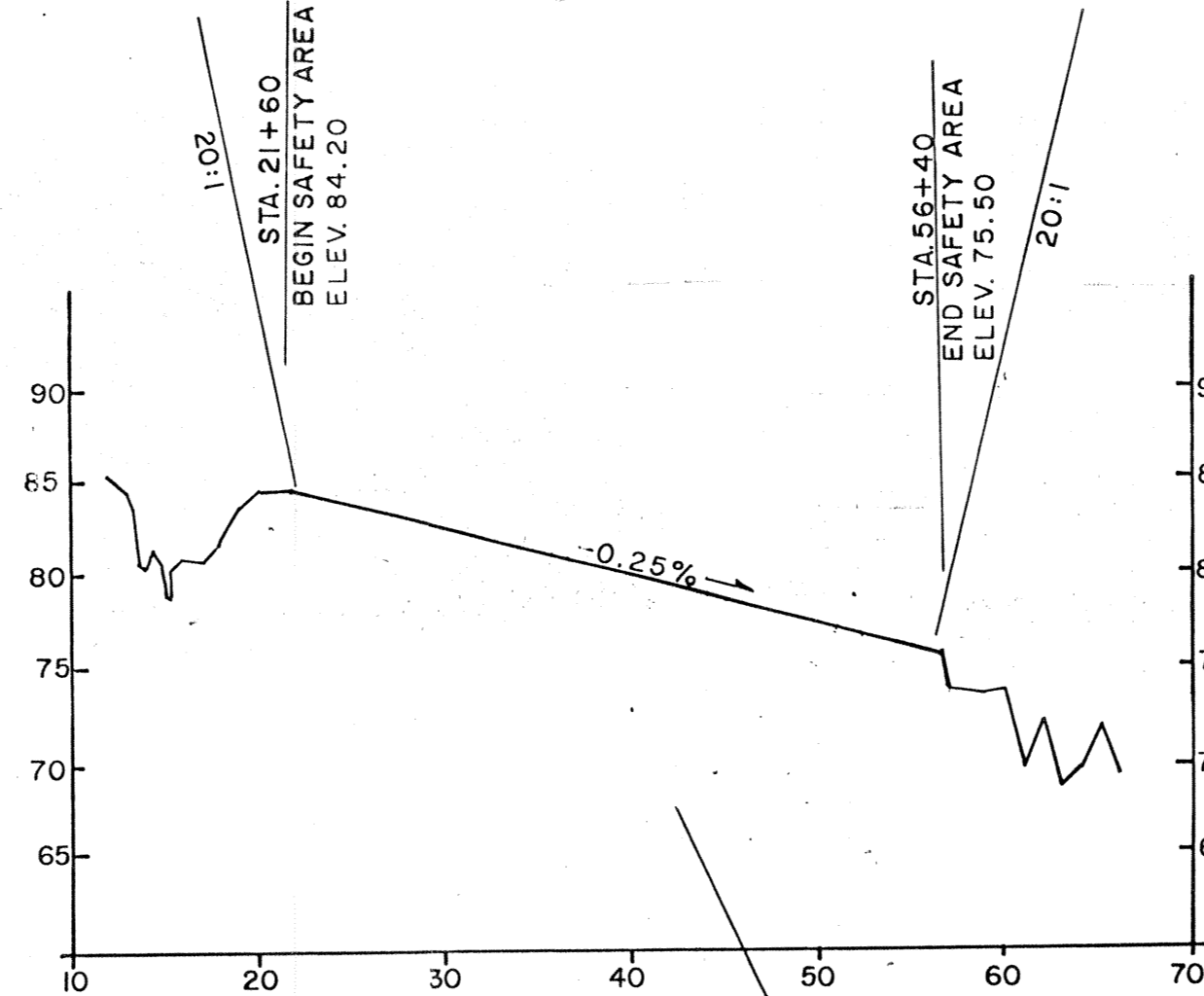
LOCATION MAP  
NO SCALE



VICINITY MAP  
NO SCALE  
SEC. 10, T7S, R25 W  
K.R.M.

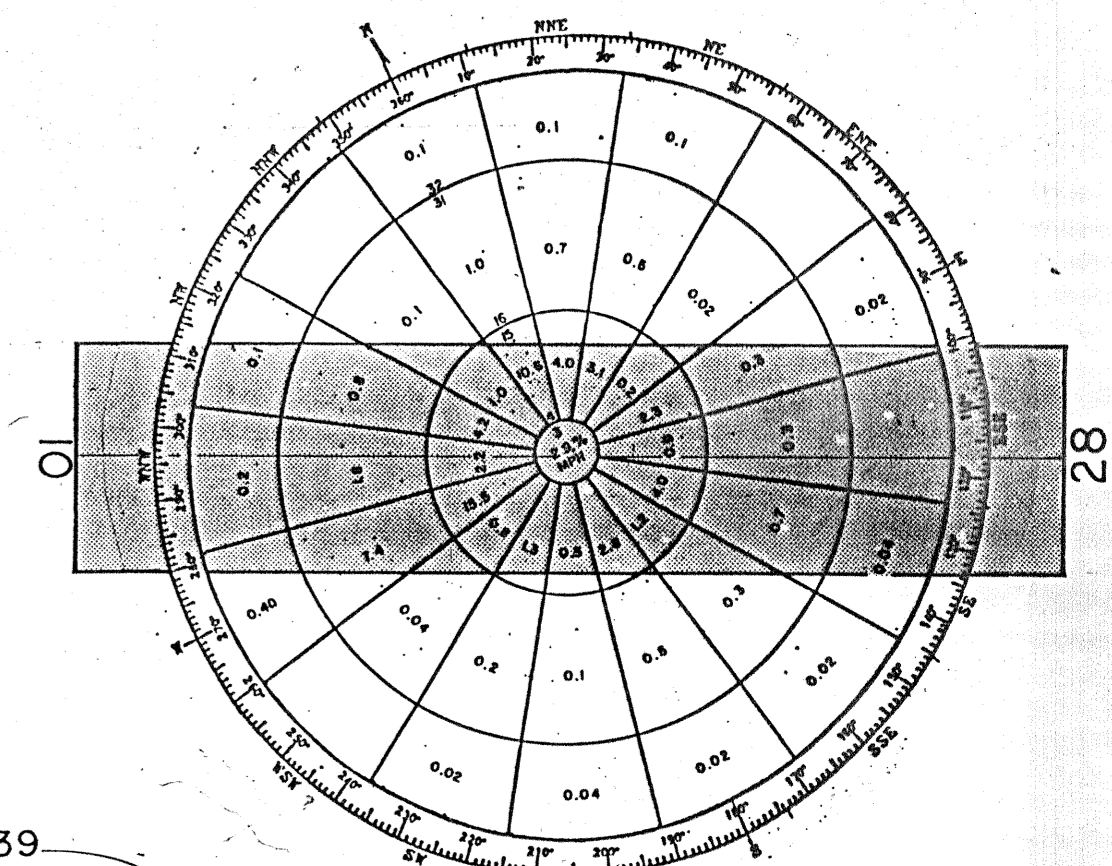
PEDERSON STRIP  
APPROXIMATELY 1 MILE  
FROM COUNCIL AIRPORT

AIRSPACE PENETRATION



RUNWAY PROFILE

SCALE: HORZ: 1" = 1000'  
VERT: 1" = 10'



WIND ROSE

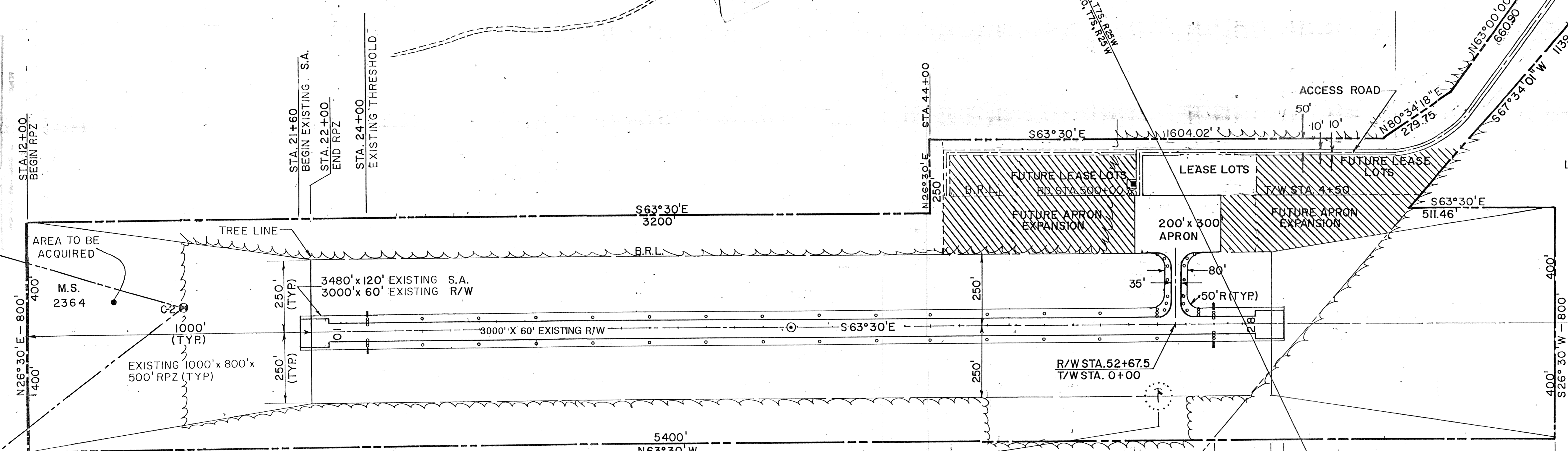
12 M.P.H.

PERCENT WIND COVERAGE  
RUNWAY 10-28 = 88.4%

WIND DATA FROM AEIDC FOR  
PERIOD FROM 1936 TO 1941.

S67°34'01"W  
74.20

ITEM	STANDARD	EXISTING	PROPOSED
F.A.R. PART 77 PENETRATIONS	NONE		AS SHOWN

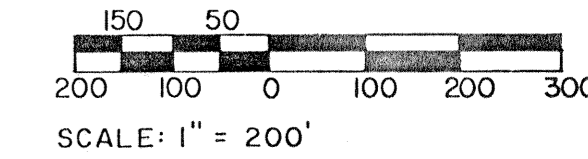


NATIVE ALLOTMENT  
LOT 4, U.S.S. 8877

	RUNWAY 10-28		RUNWAY 28-10	
	EXISTING	FUTURE	PROPOSED	FUTURE
EFFECTIVE GRADIENT	0.25 %	0.25 %		
% WIND COVERAGE	88.3 %	88.3 %		
INSTRUMENT RUNWAY	NONE	NONE		
RUNWAY SURFACE TYPE	GRAVEL	GRAVEL		
APPROACH SURFACES	20:1	20:1		
RUNWAY LIGHTING	NONE	MI		
RUNWAY MARKING	NONE	NONE		
NAVIGATION AIDS	NONE	NONE		
RUNWAY SAFETY AREA	120' x 3480'	120' x 3480'		
RUNWAY DIMENSION	60' x 3000'	60' x 3000'		

	AIRPORT DATA	
	EXISTING	FUTURE
AIRPORT ELEVATION (MSL)	84.20'	84.20'
AIRPORT CATEGORY	UTILITY	UTILITY
MEAN TEMP HOTTEST MONTH	60°F	60°F
TAXIWAY LIGHTING	NONE	MI
RAMP LIGHTING	NONE	NONE
AIRPORT REFERENCE POINT (A.R.P.)	LONG. 163°42'03"W LAT. 64°53'55"N	
AIRPORT AND TERMINAL NAVAIDS	NONE	NONE
DESIGN GROUP	I	I

	LEGEND	
	EXISTING	FUTURE
PROPERTY LINE	B.R.L.	B.R.L.
BUILDING RESTRICTION LINE (B.R.L.)		
AVIGATION AND HAZARD EASEMENT		
WIND CONE & SEGMENTED CIRCLE		
AIRPORT REFERENCE POINT		
WIND CONE (LIGHTED)		
WIND CONE (UNLIGHTED)		
ROTATING BEACON		
BUILDINGS		
ROADWAYS		
VASI	N/A	N/A
MI R/W AND T/W LIGHTS		
REFLECTIVE MARKERS/RL LIGHTS		
MONUMENTED PROPERTY CORNER		



SCALE: 1" = 200'

BY	DATE	REVISIONS
DESIGN <i>RSG</i>	CAT 4/29/94	DELETED CLOSED AIRPORT NOTE ON VICINITY MAP
	8/7/92	FAA APPROVED
PDM 6/8/92		REVISED
PDM 4-8-92		AS-BUILT
	8-26-87	FAA APPROVED
	7/31/87	CHANGED ACCESS RD. ALIGNMENT & VICINITY MAP
	1/16/86	CHANGED APRON SIZE
CHECKED	12/18/86	CORRECTED PROPERTY LINES, PROFILE, LEASE LOTS

STATE OF ALASKA  
DEPARTMENT OF TRANSPORTATION AND PUBLIC FACILITIES  
NORTHERN REGION - DESIGN AND CONSTRUCTION - AVIATION

APPROVED *Daniel D. Urbach* DATE *9-18-96*  
DANIEL D. URBACH, P.E. CHIEF AVIATION DESIGN GROUP

AIRPORT LAYOUT PLAN APPROVED *conditionally*  
By *Matt Freeman* MATT FREEMAN  
FAA AIRPORTS DIVISION  
ALASKA REGION, AAL-600  
DATE: *7/4/97*

COUNCIL AIRPORT  
AIRPORT LAYOUT PLAN

SHEET  
1 OF 1