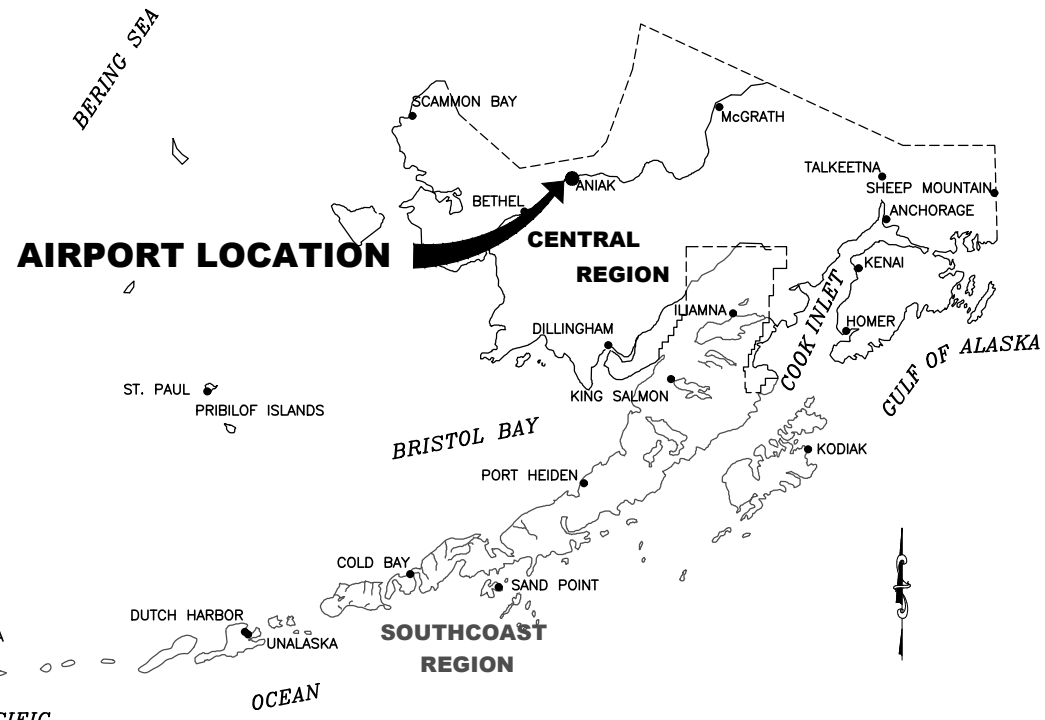


Designed By: JMW
 Drawn By: JMW
 Checked By: CLB
 Date Plotted: 1/24/2023, 2:46 PM
 Layout Number: 000000
 File Name: Z:\p\project\2380-06-Aniak-Airport-Aero-Survey\Civil\ACAD\ALP-ANI-COVER.dwg



ALASKA CENTRAL REGION LOCATION MAP

NOT TO SCALE



VICINITY MAP



T 17 N, R 57 W, SEC. 2, 11, & 12
 SEWARD MERIDIAN
 U.S.G.S. RUSSIAN MISSION (C-2) 1970, ALASKA

ANIAK AIRPORT AIRPORT LAYOUT PLAN

ANIAK, ALASKA

LEGEND		
ITEM	EXISTING	ULTIMATE
AIRPORT REFERENCE POINT (ARP)	⊙	⊙
ANTENNA	▲	▲
APPROACH SURFACE	--- AP ---	--- AP ---
BLUFF	⚡	⚡
BUILDINGS	▨	■
BUILDING RESTRICTION LINE	--- BRL ---	--- BRL ---
DEPARTURE SURFACE	--- DP ---	--- DP ---
FENCE	-x-x-x-x-	-x-x-x-x-
GLIDESLOPE CRITICAL AREA	--- GS --- GS ---	--- GS --- GS ---
MALSF	○○○	●●●
LOCALIZER CRITICAL AREA	--- NCA ---	--- NCA ---
PAPI	□□□□	■ ■ ■ ■
PAPI SITING SURFACE	--- PSS ---	--- PSS ---
PAVEMENT EDGE	≡≡≡	≡≡≡
PROPERTY LINE	- - - - -	- - - - -
REIL	⚡	⚡
ROADWAYS	= = = = =	= = = = =
ROTATING BEACON	⊙	⊙
RUNWAY OBJECT FREE AREA	--- OFA ---	--- OFA ---
RUNWAY OBSTACLE FREE ZONE	--- OFZ ---	--- OFZ ---
RUNWAY PROTECTION ZONE	--- RPZ ---	--- RPZ ---
RUNWAY PROTECTION ZONE - APPROACH	--- ARPZ ---	--- ARPZ ---
RUNWAY PROTECTION ZONE - DEPARTURE	--- DRPZ ---	--- DRPZ ---
RUNWAY SAFETY AREA	--- RSA ---	--- RSA ---
SEGMENTED CIRCLE	⊙	⊙
SHORELINE	⋯⋯⋯	⋯⋯⋯
SURVEY MONUMENT	⊙	⊙
TAXIWAY IDENTIFIER	(X)	(X)
TAXIWAY OBJECT FREE AREA	--- TOFA ---	--- TOFA ---
TAXIWAY SAFETY AREA	--- TSA ---	--- TSA ---
THRESHOLD MARKERS/LIGHTS	○○○○○○	●●●●●●
THRESHOLD SITING SURFACE	--- TSS ---	--- TSS ---
TOPOGRAPHIC CONTOURS	-100-	-100-
TREE (LARGE SINGLE)	⊙	⊙
TREELINE	~~~~~	~~~~~
UTILITY POLE	⊙	⊙
WEATHER STATION	⊙	⊙
WEATHER STATION CRITICAL AREA	- - - - -	- - - - -
WIND CONE	⚡	⚡

DRAWING INDEX	
SHT #	TITLE
1	COVER & SHEET INDEX
2	AIRPORT DATA
3	WIND DATA
4	EXISTING LAYOUT
5	ULTIMATE LAYOUT
6	EXISTING TERMINAL PLAN
7	ULTIMATE TERMINAL PLAN
8	EXISTING INNER PORTION OF RW 11 APPROACH SURFACE
9	EXISTING INNER PORTION OF RW 29 APPROACH SURFACE
10	ULTIMATE INNER PORTION OF RW 11 APPROACH SURFACE
11	ULTIMATE INNER PORTION OF RW 29 APPROACH SURFACE
12	EXISTING DEPARTURE SURFACES
13	ULTIMATE DEPARTURE SURFACES
14	AIRPORT AIRSPACE (FAR PART 77) (1 OF 2)
15	AIRPORT AIRSPACE (FAR PART 77) (2 OF 2)
16	PROPERTY MAP
17	LAND USE

BY	DATE	REV NO.	REVISION
AVA	1/24/2023	2	AS-BUILT UPDATE, ANI RW SHIFT (Z528070000)
KM	2/21/2017	1	TRACT III REVISED, SHEET 22

APPROVED: _____ **DATE:** _____
 ORIGINALLY SIGNED 8/16/16
KENNETH M. MORTON, P.E. **PRECONSTRUCTION ENGINEER**
RECOMMENDED: _____ **DATE:** _____
 ORIGINALLY SIGNED BY MORGAN P. MERRITT, P.E.
 FOR WOLFGANG E. JUNGE, P.E. 8/15/16
WOLFGANG E. JUNGE, P.E. **DESIGN SECTION CHIEF**
 AIRPORT LAYOUT PLAN CONDITIONAL APPROVAL SUBJECT TO
 ALP APPROVAL LETTER DATED 8/17/2016
 FAA AIRSPACE REVIEW NUMBER: 2016-AAL-175-NRA
FAA, AIRPORTS DIVISION ALASKAN REGION, AAL- **DATE:** _____

STATE OF ALASKA
DEPARTMENT OF TRANSPORTATION
AND PUBLIC FACILITIES
CENTRAL REGION

ANIAK AIRPORT
 ANIAK, ALASKA
 AIRPORT LAYOUT PLAN

COVER & SHEET INDEX

DATE: 8/10/16
SHEET: 1 OF 17

Date: 1/24/2023, 2:47 PM
 Layout Name: 1.dwg
 File Name: Z:\projects\2380_06 Aniak Airport Aero Survey\GIS\1\ACAD\AIP-ANI-COVER-DATA.dwg
 Drawn By: MM
 Checked By: ANA
 CUB

AIRPORT DATA TABLE		
ITEM	EXISTING	ULTIMATE
ICAO IDENTIFIER	PANI	PANI
NATIONAL AIRPORT IDENTIFIER	ANI	ANI
FAA SITE NUMBER	50038.*A	50038.*A
AIRPORT ELEVATION NAVD88	96.8'	96.8'
AIRPORT REFERENCE CODE	B-III	B-III
CRITICAL AIRCRAFT	DASH-8	DASH-8
MEAN MAX. TEMPERATURE, HOTTEST MONTH	65°F, JULY	
MAGNETIC DECLINATION, YEAR, RATE OF CHANGE	10.56° E, 2025, 0'28"W PER YEAR (NOAA/NCEI)	
AIRPORT AND TERMINAL NAVIGATION AIDS	BEACON, WINDCONE, SEGMENTED CIRCLE	BEACON, WINDCONE, SEGMENTED CIRCLE
MISCELLANEOUS FACILITIES	WEATHER STATION	WEATHER STATION
NPIAS SERVICE LEVEL	COMMERCIAL	COMMERCIAL
STATE EQUIVALENT SERVICE ROLE	REGIONAL	REGIONAL

RUNWAY DATA TABLE		
ITEM	EXISTING	ULTIMATE
RUNWAY IDENTIFIER	11/29	11/29
RUNWAY TYPE (U, OTU)	OTU	OTU
FAR PART 77 APPROACH CATEGORY (V, NPI, P)	P / NPI	P / NPI
FAR PART 77 VISIBILITY MINIMUM	≥3/4 MI / ≥1 MI	≥3/4 MI / ≥1 MI
FAR PART 77 APPROACH SURFACE SLOPE	50:1 / 34:1	50:1 / 34:1
APPROACH TYPE (VIS, NPA, APV(NP), APV(P), PREC)	PREC / NPA	PREC / NPA
THRESHOLD SITING SURFACE SLOPE	20:1 & 30:1 / 20:1	20:1 & 30:1 / 20:1
DEPARTURE SURFACE (Y/N)	Y / Y	Y / Y
RUNWAY DESIGN CODE (RDC)	B-III-4000/B-III-5000	B-III-4000/B-III-5000
APPROACH REFERENCE CODE (APRC)	B/III/4000, D/II/4000 / B/III/5000, D/II/5000	B/III/4000, D/II/4000 / B/III/5000, D/II/5000
DEPARTURE REFERENCE CODE (DPRC)	B/III, D/II	B/III, D/II
RUNWAY SURFACE	ASPHALT	ASPHALT
SURFACE TREATMENT	GROOVED	GROOVED
GEAR CONFIG/PAVE STRENGTH (x1000 LBS)	S30, D120, 2D126	S30, D120, 2D126
PAVEMENT STRENGTH (PCR)	405/F/A/X/T	405/F/A/X/T
DESIGN AIRCRAFT (IF >60,000 LBS)	N/A	N/A
MAXIMUM ELEVATION (NAVD88)	96.8'	96.8'
TOUCHDOWN ZONE ELEVATION (NAVD88)	96.7' / 96.7'	96.7' / 96.7'
EFFECTIVE GRADE	0.0%	0.0%
MEAN GEODETIC AZIMUTH (DEC, CW FROM NORTH)	121.19°	121.19°
RUNWAY DIMENSIONS	100' x 6200'	100' x 6200'
RUNWAY SHOULDER WIDTH	20'	20'
RUNWAY SAFETY AREA (RSA)	300' x 6600'	300' x 6600'
RSA LENGTH BEYOND RUNWAY END	600' / 600'	600' / 600'
RSA LENGTH PRIOR TO THRESHOLD	600' / 600'	600' / 600'
RUNWAY OBJECT FREE AREA (OFA)	800' x 6600'	800' x 6600'
OFA LENGTH BEYOND RUNWAY END	600' / 600'	600' / 600'
RUNWAY OBSTACLE FREE ZONE (OFZ)	400' x 6600'	400' x 6600'
INNER APPROACH OBSTACLE FREE ZONE (OFZ)	400' x 1000' / NONE	400' x 1000' / NONE
PRECISION OBSTACLE FREE ZONE (POFZ)	800' x 200' / N/A	N/A
RUNWAY PROTECTION ZONE (RPZ) RW 11	1000' x 1510' x 1700'	1000' x 1510' x 1700'
RUNWAY PROTECTION ZONE (RPZ) RW 29	500' x 700' x 1000'	500' x 700' x 1000'
RUNWAY LIGHTING	HIRL	HIRL
RUNWAY MARKING TYPE (V, NPI, P)	P / NPI	P / NPI
RUNWAY NAVIGATIONAL AIDS	GS, MALSF / NDB/DME, LOC, PAPI	GS, MALSF, PAPI / NDB/DME, LOC, PAPI
AERONAUTICAL SURVEY TYPE REQUIRED	VERTICALLY-GUIDED	VERTICALLY-GUIDED

DECLARED DISTANCES					
	RUNWAY	TORA	TODA	ASDA	LDA
EXISTING	11	5800'	6200'	5800'	5400'
	29	5800'	6200'	5800'	5400'
ULTIMATE	11	5800'	6200'	5800'	5400'
	29	5800'	6200'	5800'	5400'

NOTES:

- THIS DRAWING IS A COMPILATION OF GROUND SURVEY AND AERIAL MAPPING DATA COLLECTED DURING THE 2012, 2013 AND 2014 SEASON IN SUPPORT OF FAA AERONAUTICAL SURVEY #143975.
- THE HORIZONTAL COORDINATE SYSTEM FOR THIS PROJECT IS NAD 83(2011)(EPOCH2010) ALASKA STATE PLANE ZONE 6, U.S SURVEY FEET. THE VERTICAL DATUM FOR THIS PROJECT IS NAVD88 (GEOID 12A).
- GROUND SURVEY WAS PERFORMED BY STANTEC OCTOBER 13-23, 2012, JUNE 3-6, 2013, AND OCTOBER 8-16, 2014. AERIAL MAPPING WAS PERFORMED BY KODIAK MAPPING INC. USING IMAGERY COLLECTED SEPTEMBER 17TH OF 2013.
- PACS AND SACS WERE DESTROYED DURING THE RUNWAY SHIFT PROJECT AND WERE NOT REESTABLISHED.
- AS-BUILT SURVEY WAS PERFORMED BY R&M CONSULTANTS, INC. DECEMBER OF 2020. AS-BUILT AERIAL MAPPING WAS PERFORMED BY KODIAK MAPPING INC. USING IMAGERY COLLECTED AUGUST OF 2020.

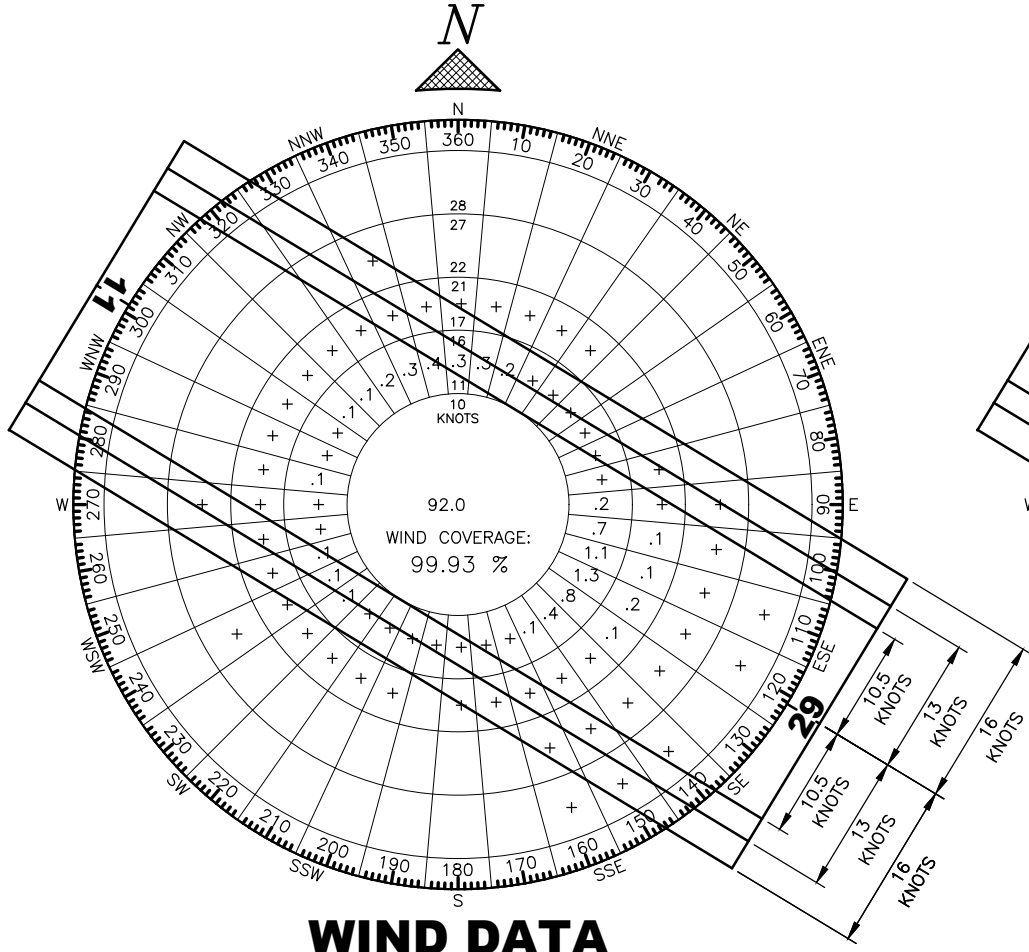
AIRPORT CONTROL								
PID	DESIGNATION	LATITUDE	LONGITUDE	ELLIPSOID HEIGHT	NORTHING	EASTING	ELEVATION	DESCRIPTION
	ANI A	SEE NOTE 4						
	ANI B	SEE NOTE 4						
	ANI C	SEE NOTE 4						

MODIFICATION OF STANDARDS					
ITEM	EXISTING	STANDARD	ULTIMATE	AIRSPACE #	APPROVAL DATE
FULL LENGTH PARALLEL TAXIWAY TO THRESHOLD	NONE	FULL LENGTH	FULL LENGTH	2013-AAL-8-NRA	3/5/2013

GEOGRAPHIC COORDINATES									
ITEM	EXISTING LATITUDE	EXISTING LONGITUDE	EXISTING STATION	EXISTING ELEVATION	ULTIMATE LATITUDE	ULTIMATE LONGITUDE	ULTIMATE STATION	ULTIMATE ELEVATION	
AIRPORT REFERENCE POINT	61°34'53.06" N	159°32'43.09" W	677+00.00	N/A	61°34'53.06" N	159°32'43.09" W	677+00.00	N/A	
RW 11 END	61°35'08.86" N	159°33'37.87" W	646+00.00	96.8'	61°35'08.86" N	159°33'37.87" W	646+00.00	96.8'	
RW 11 DISPLACED THRESHOLD	61°35'06.82" N	159°33'30.80" W	650+00.00	96.7'	61°35'06.82" N	159°33'30.80" W	650+00.00	96.7'	
RW 29 END	61°34'37.25" N	159°31'48.30" W	708+00.00	96.7'	61°34'37.25" N	159°31'48.30" W	708+00.00	96.7'	
RW 29 DISPLACED THRESHOLD	61°34'39.29" N	159°31'55.36" W	704+00.00	96.7'	61°34'39.29" N	159°31'55.36" W	704+00.00	96.7'	

TAXIWAY DATA TABLE									
TAXIWAY	EXISTING								TURNAROUND (TA)
	A	B	C	D	E	F	G		
AIRPLANE DESIGN GROUP	III	-	-	-	-	III	III	III	
TAXIWAY DESIGN GROUP	3	-	-	-	-	3	3	3	
TAXIWAY SURFACE	ASPHALT	-	-	-	-	ASPHALT	ASPHALT	ASPHALT	
TAXIWAY DIMENSIONS	50' x 500'	-	-	-	-	50' x 1485'	50' x 340'	50' x 850'	
SHOULDER WIDTH	20'	-	-	-	-	20'	20'	20'	
SAFETY AREA (TSA) WIDTH	118'	-	-	-	-	118'	118'	118'	
EDGE SAFETY MARGIN (TESM)	10'	-	-	-	-	10'	10'	10'	
OBJECT FREE AREA (TOFA) WIDTH	186'	-	-	-	-	186'	186'	186'	
TAXIWAY LIGHTING	MITL	-	-	-	-	MITL	MITL	MITL	
TAXIWAY MARKING	YES	-	-	-	-	YES	YES	YES	
ULTIMATE									
AIRPLANE DESIGN GROUP	III	III	III	III	III	III	III	-	
TAXIWAY DESIGN GROUP	3	3	3	3	3	3	3	-	
TAXIWAY SURFACE	ASPHALT	ASPHALT	ASPHALT	ASPHALT	ASPHALT	ASPHALT	ASPHALT	-	
TAXIWAY DIMENSIONS	50' x 6025'	50' x 340'	50' x 300'	50' x 300'	50' x 300'	50' x 1185'	50' x 340'	-	
SHOULDER WIDTH	20'	20'	20'	20'	20'	20'	20'	-	
SAFETY AREA (TSA) WIDTH	118'	118'	118'	118'	118'	118'	118'	-	
EDGE SAFETY MARGIN (TESM)	10'	10'	10'	10'	10'	10'	10'	-	
OBJECT FREE AREA (TOFA) WIDTH	186'	186'	186'	186'	186'	186'	186'	-	
TAXIWAY LIGHTING	MITL	MITL	MITL	MITL	MITL	MITL	MITL	-	
TAXIWAY MARKING	YES	YES	YES	YES	YES	YES	YES	-	

STATE OF ALASKA DEPARTMENT OF TRANSPORTATION AND PUBLIC FACILITIES CENTRAL REGION		DATE: 1/24/2023
ANIAK AIRPORT ANIAK, ALASKA AIRPORT LAYOUT PLAN		SHEET: 2 OF 17
AIRPORT DATA		
BY: DATE:	REVISION:	

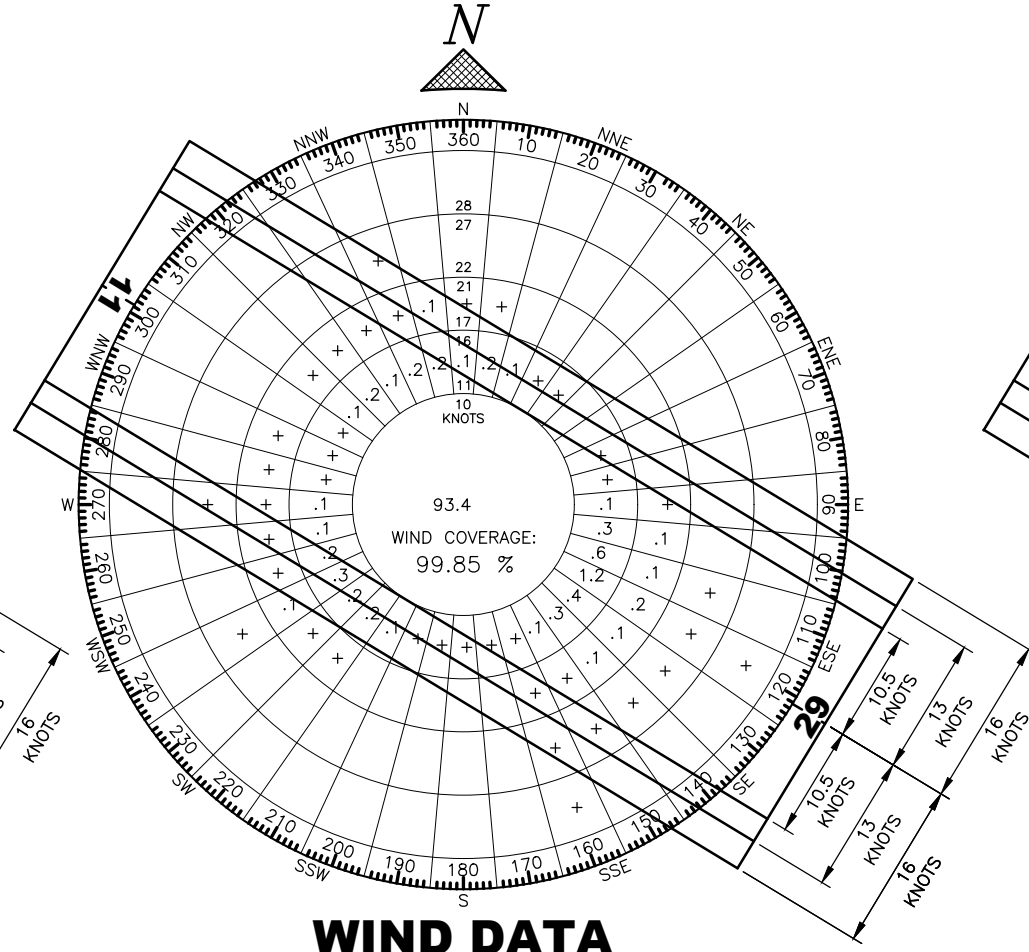


WIND DATA

NOTE: WIND SPEED IS INDICATED IN KNOTS.

ALL WEATHER WIND DATA			
RUNWAY	10.5 KT	13 KT	16 KT
RW 11/29	98.73%	99.45%	99.93%

SOURCE: ANIAK WIND DATA
NOAA INTEGRATED SURFACE DATABASE
APRIL 26, 2021
PERIOD: 2011 - 2020

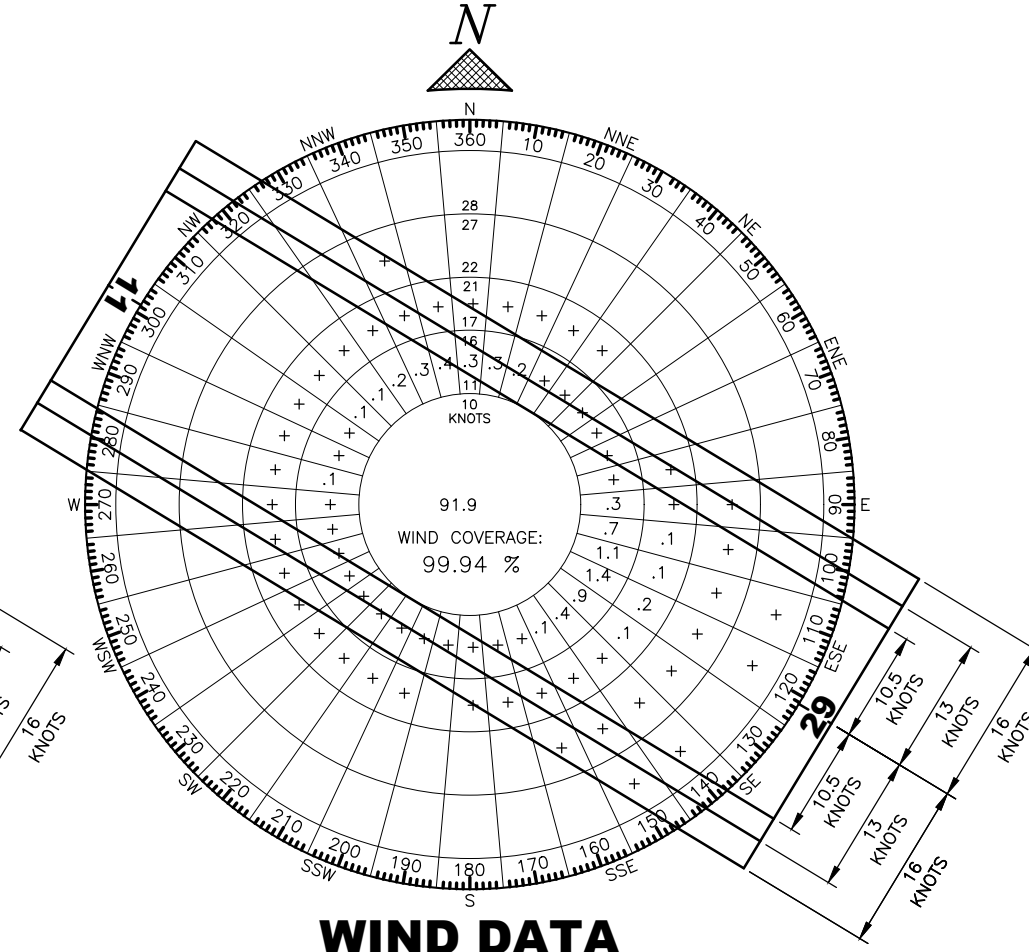


WIND DATA

NOTE: WIND SPEED IS INDICATED IN KNOTS.

IFR WIND DATA			
RUNWAY	10.5 KT	13 KT	16 KT
RW 11/29	98.35%	99.19%	99.85%

SOURCE: ANIAK WIND DATA
NOAA INTEGRATED SURFACE DATABASE
APRIL 26, 2021
PERIOD: 2011 - 2020



WIND DATA

NOTE: WIND SPEED IS INDICATED IN KNOTS.

VFR WIND DATA			
RUNWAY	10.5 KT	13 KT	16 KT
RW 11/29	98.77%	99.48%	99.94%

SOURCE: ANIAK WIND DATA
NOAA INTEGRATED SURFACE DATABASE
APRIL 26, 2021
PERIOD: 2011 - 2020

NO.	DATE	REVISION

STATE OF ALASKA
DEPARTMENT OF TRANSPORTATION
AND PUBLIC FACILITIES
CENTRAL REGION

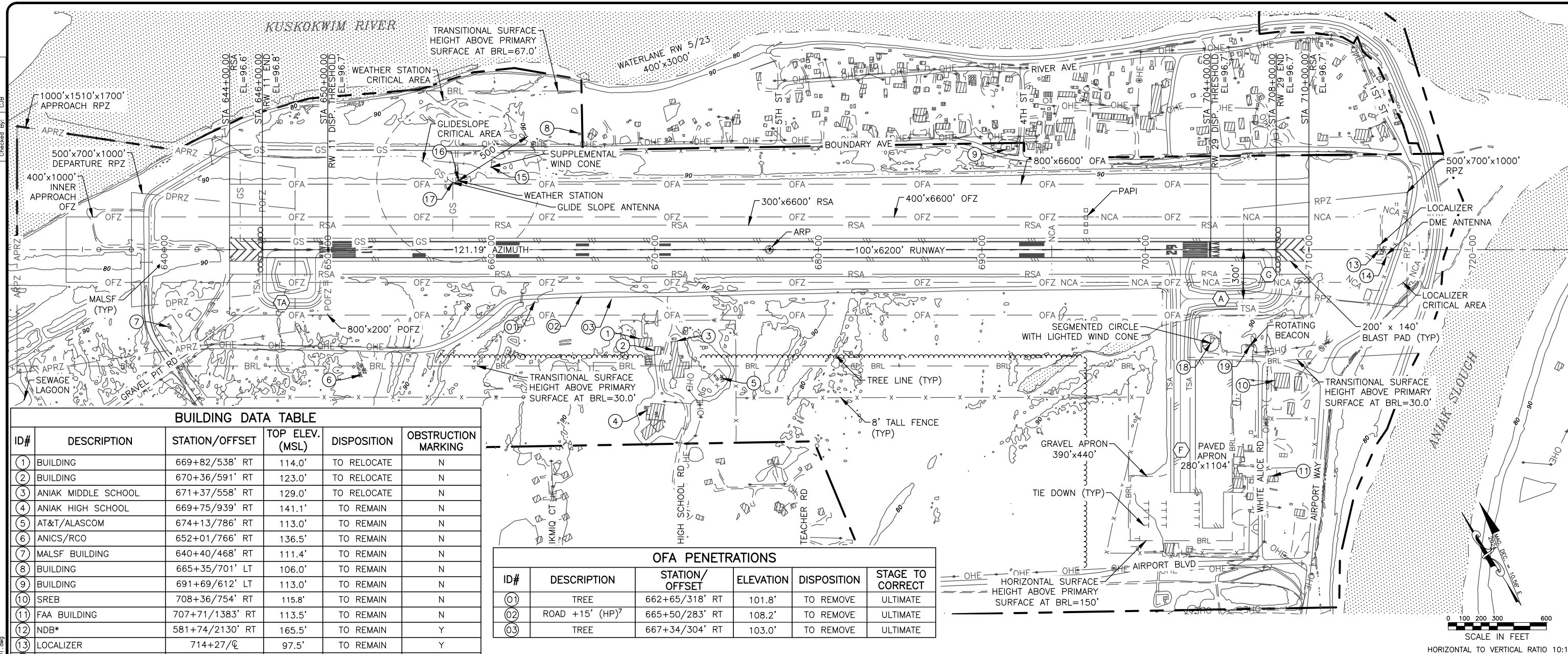
ANIAK AIRPORT
ANIAK, ALASKA
AIRPORT LAYOUT PLAN

WIND DATA

DATE: 1/24/2023
SHEET: 3
OF 17

AVA 1/24/2023 AS-BUILT UPDATE, ANI RW SHIFT (Z528070000)
BY DATE REVISION

Date Plotted: 1/24/2023, 2:47 PM
 Layout Name: ALP-
 File Name: Z:\Project\2380_06 Aniak Airport Aroc Survey\GVT\ACAD\ALP-ANI-3-EXISTING_LAYOUT.dwg
 Designed By: MW
 Drawn By: AW
 Checked By: CJB

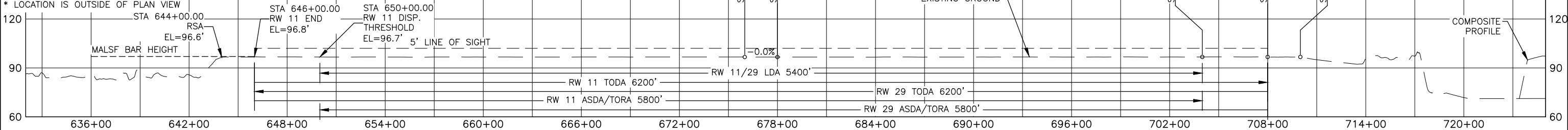


BUILDING DATA TABLE

ID#	DESCRIPTION	STATION/OFFSET	TOP ELEV. (MSL)	DISPOSITION	OBSTRUCTION MARKING
1	BUILDING	669+82/538' RT	114.0'	TO RELOCATE	N
2	BUILDING	670+36/591' RT	123.0'	TO RELOCATE	N
3	ANIAK MIDDLE SCHOOL	671+37/558' RT	129.0'	TO RELOCATE	N
4	ANIAK HIGH SCHOOL	669+75/939' RT	141.1'	TO REMAIN	N
5	AT&T/ALASCOM	674+13/786' RT	113.0'	TO REMAIN	N
6	ANICS/RCO	652+01/766' RT	136.5'	TO REMAIN	N
7	MALSF BUILDING	640+40/468' RT	111.4'	TO REMAIN	N
8	BUILDING	665+35/701' LT	106.0'	TO REMAIN	N
9	BUILDING	691+69/612' LT	113.0'	TO REMAIN	N
10	SREB	708+36/754' RT	115.8'	TO REMAIN	N
11	FAA BUILDING	707+71/1383' RT	113.5'	TO REMAIN	N
12	NDB*	581+74/2130' RT	165.5'	TO REMAIN	Y
13	LOCALIZER	714+27/Q	97.5'	TO REMAIN	Y
14	DME ANTENNA	714+69/37' RT	98.2'	TO REMAIN	Y
15	SUPPLEMENTAL WIND CONE	660+01/505' LT	110.1'	TO REMAIN	Y
16	WEATHER STATION	658+00/422' LT	133.6'	TO REMAIN	Y
17	GLIDE SLOPE ANTENNA	657+64/411' LT	146.4'	TO REMAIN	Y
18	PRIMARY WIND CONE	703+99/570' RT	110.4'	TO REMAIN	Y
19	ROTATING BEACON	706+40/586' RT	135.0'	TO REMAIN	Y

OFA PENETRATIONS

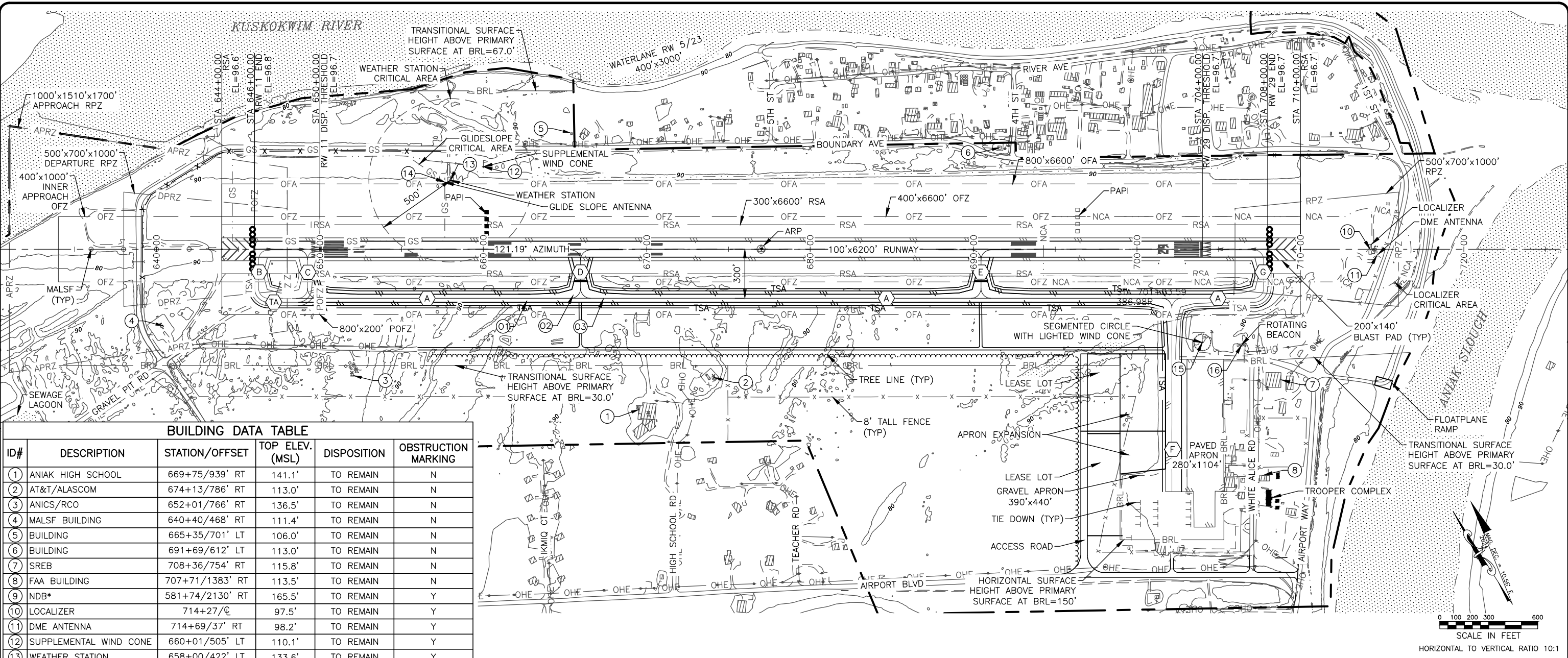
ID#	DESCRIPTION	STATION/OFFSET	ELEVATION	DISPOSITION	STAGE TO CORRECT
01	TREE	662+65/318' RT	101.8'	TO REMOVE	ULTIMATE
02	ROAD +15' (HP)	665+50/283' RT	108.2'	TO REMOVE	ULTIMATE
03	TREE	667+34/304' RT	103.0'	TO REMOVE	ULTIMATE



- NOTES:**
- ALL ELEVATIONS ARE NAVD88.
 - AS-BUILT SURVEY PERFORMED BY R&M CONSULTANTS, INC. DECEMBER OF 2020. AS-BUILT AERIAL MAPPING WAS PERFORMED BY KODIAK MAPPING INC. USING IMAGERY COLLECTED AUGUST OF 2020.
 - SEE INNER APPROACH SHEETS FOR THRESHOLD SITING AND APPROACH SURFACES.
 - NO LINE OF SIGHT OBSTRUCTIONS.
 - NO OFZ OBJECT PENETRATIONS.
 - (X) TAXIWAY IDENTIFIER, SEE AIRPORT DATA SHEET.
 - ROAD+15' PENETRATIONS EXTEND FROM STA 659+89/400' RT TO STA 701+36/223' RT
 - (HP) = POINT OF HIGHEST PENETRATION.

STATE OF ALASKA DEPARTMENT OF TRANSPORTATION AND PUBLIC FACILITIES CENTRAL REGION ANIAK AIRPORT ANIAK, ALASKA AIRPORT LAYOUT PLAN		DATE: 1/24/2023
		SHEET: 4
		OF 17
EXISTING LAYOUT AWA 1/24/2023 AS-BUILT UPDATE, ANI RW SHIFT (Z528070000) BY DATE REVISION		

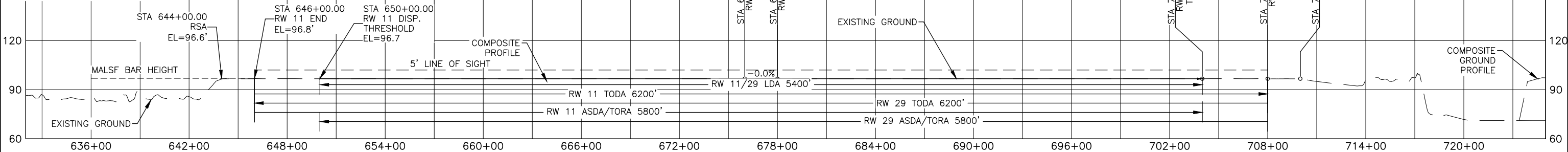
Date: 1/24/2023, 2:48 PM
 Layout Name: ALP-06
 File Name: Z:\projects\2380_06 Aniak Airport Aero Survey\GIS\11\ACAD\ALP-ANI-4-ULTIMATE-LAYOUT.dwg
 Designed By: MW
 Drawn By: AW
 Checked By: CJB



BUILDING DATA TABLE

ID#	DESCRIPTION	STATION/OFFSET	TOP ELEV. (MSL)	DISPOSITION	OBSTRUCTION MARKING
1	ANIAK HIGH SCHOOL	669+75/939' RT	141.1'	TO REMAIN	N
2	AT&T/ALASCOM	674+13/786' RT	113.0'	TO REMAIN	N
3	ANICS/RCO	652+01/766' RT	136.5'	TO REMAIN	N
4	MALSF BUILDING	640+40/468' RT	111.4'	TO REMAIN	N
5	BUILDING	665+35/701' LT	106.0'	TO REMAIN	N
6	BUILDING	691+69/612' LT	113.0'	TO REMAIN	N
7	SREB	708+36/754' RT	115.8'	TO REMAIN	N
8	FAA BUILDING	707+71/1383' RT	113.5'	TO REMAIN	N
9	NDB*	581+74/2130' RT	165.5'	TO REMAIN	Y
10	LOCALIZER	714+27/0	97.5'	TO REMAIN	Y
11	DME ANTENNA	714+69/37' RT	98.2'	TO REMAIN	Y
12	SUPPLEMENTAL WIND CONE	660+01/505' LT	110.1'	TO REMAIN	Y
13	WEATHER STATION	658+00/422' LT	133.6'	TO REMAIN	Y
14	GLIDE SLOPE ANTENNA	657+64/411' LT	146.4'	TO REMAIN	Y
15	PRIMARY WIND CONE	703+99/570' RT	110.4'	TO REMAIN	Y
16	ROTATING BEACON	706+40/586' RT	135.0'	TO REMAIN	Y

* LOCATION IS OUTSIDE OF PLAN VIEW



- NOTES:**
- ALL ELEVATIONS ARE NAVD88.
 - SEE INNER APPROACH SHEETS FOR THRESHOLD SITING AND APPROACH SURFACES.
 - NO LINE OF SIGHT OBSTRUCTIONS.
 - NO OFZ OBJECT PENETRATIONS.
 - (X) TAXIWAY IDENTIFIER, SEE AIRPORT DATA SHEET.
 - ROAD+15' PENETRATIONS EXTEND FROM STA 659+89/400' RT TO STA 701+36/223' RT
 - (HP) = POINT OF HIGHEST PENETRATION.

OFA PENETRATIONS

ID#	DESCRIPTION	STATION/OFFSET	ELEVATION	DISPOSITION	STAGE TO CORRECT
01	TREE	662+65/318' RT	101.8'	TO REMOVE	ULTIMATE
02	ROAD +15' (HP) ⁶	665+50/283' RT	108.2'	TO REMOVE	ULTIMATE
03	TREE	667+34/304' RT	103.0'	TO REMOVE	ULTIMATE

**STATE OF ALASKA
DEPARTMENT OF TRANSPORTATION
AND PUBLIC FACILITIES
CENTRAL REGION**

**ANIAK AIRPORT
ANIAK, ALASKA
AIRPORT LAYOUT PLAN**

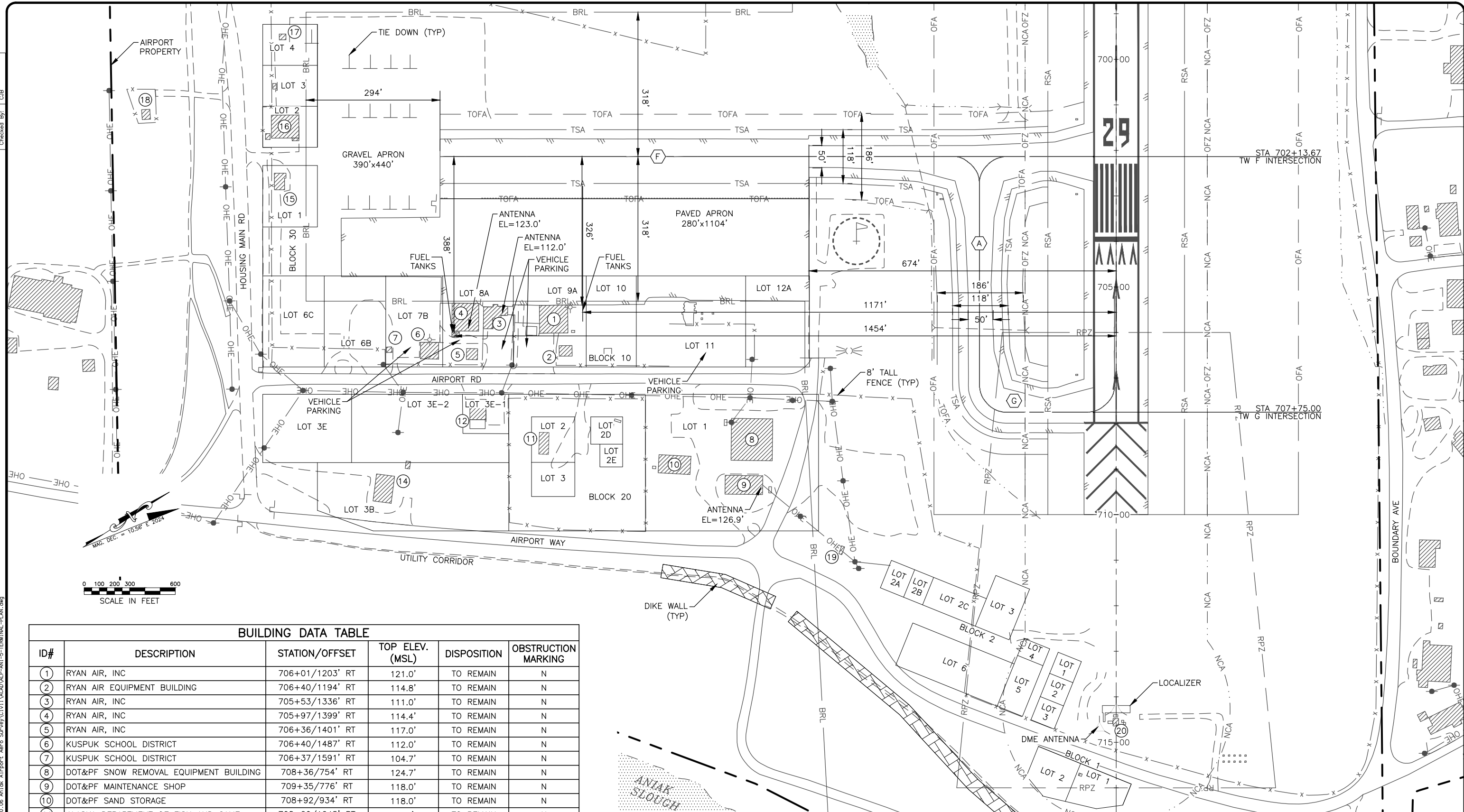
ULTIMATE LAYOUT

DATE: 1/24/2023
SHEET: 5 OF 17

NO.	DATE	REVISION

AVA 1/24/2023 AS-BUILT UPDATE, ANI RW SHIFT (Z528070000)
BY DATE REVISION

Date: 1/24/2023, 2:48 PM
 Layout Name: ANIAP-PL-PLAN.dwg
 File Name: Z:\Projects\2380_06_Aniak_Airport_Aero_Survey\GVT1\ACAD\A-P-ANI-5-TERMINAL-PLAN.dwg
 Designed By: MM
 Drawn By: NVA
 Checked By: CJB



BUILDING DATA TABLE

ID#	DESCRIPTION	STATION/OFFSET	TOP ELEV. (MSL)	DISPOSITION	OBSTRUCTION MARKING
1	RYAN AIR, INC	706+01/1203' RT	121.0'	TO REMAIN	N
2	RYAN AIR EQUIPMENT BUILDING	706+40/1194' RT	114.8'	TO REMAIN	N
3	RYAN AIR, INC	705+53/1336' RT	111.0'	TO REMAIN	N
4	RYAN AIR, INC	705+97/1399' RT	114.4'	TO REMAIN	N
5	RYAN AIR, INC	706+36/1401' RT	117.0'	TO REMAIN	N
6	KUSPUK SCHOOL DISTRICT	706+40/1487' RT	112.0'	TO REMAIN	N
7	KUSPUK SCHOOL DISTRICT	706+37/1591' RT	104.7'	TO REMAIN	N
8	DOT&PF SNOW REMOVAL EQUIPMENT BUILDING	708+36/754' RT	124.7'	TO REMAIN	N
9	DOT&PF MAINTENANCE SHOP	709+35/776' RT	118.0'	TO REMAIN	N
10	DOT&PF SAND STORAGE	708+92/934' RT	118.0'	TO REMAIN	N
11	ALASKA DEPARTMENT OF FISH AND GAME	708+20/1245' RT	104.0'*	TO REMAIN	N
12	FAA BUILDING	707+71/1383' RT	113.5'	TO REMAIN	N
14	CITY OF ANIAK MAINTENANCE SHOP	709+16/1584' RT	115.4'	TO REMAIN	N
15	ROBERT & GRAIL VANDERPOOL	702+56/1822' RT	109.0'	TO REMAIN	N
16	BUSH-TELL AIR (VENT)	701+78/1794' RT	109.0'	TO REMAIN	N
17	ALASKA DEPARTMENT OF NATURAL RESOURCE	699+51/1822' RT	97.0'	TO REMAIN	N
18	CITY OF ANIAK LIFT STATION	701+31/2120' RT	107.0'	TO REMAIN	N
19	FAA	710+71/596' RT	103.0'	TO REMAIN	N
20	FAA	714+48/CL	111.6'	TO REMAIN	N

* NO BUILDING HEIGHT INFORMATION OBTAINED FROM SURVEY, TOP ELEVATION ESTIMATED AS GROUND PLUS 10 FEET.

**STATE OF ALASKA
 DEPARTMENT OF TRANSPORTATION
 AND PUBLIC FACILITIES
 CENTRAL REGION**

**ANIAK AIRPORT
 ANIAK, ALASKA
 AIRPORT LAYOUT PLAN**

EXISTING TERMINAL PLAN

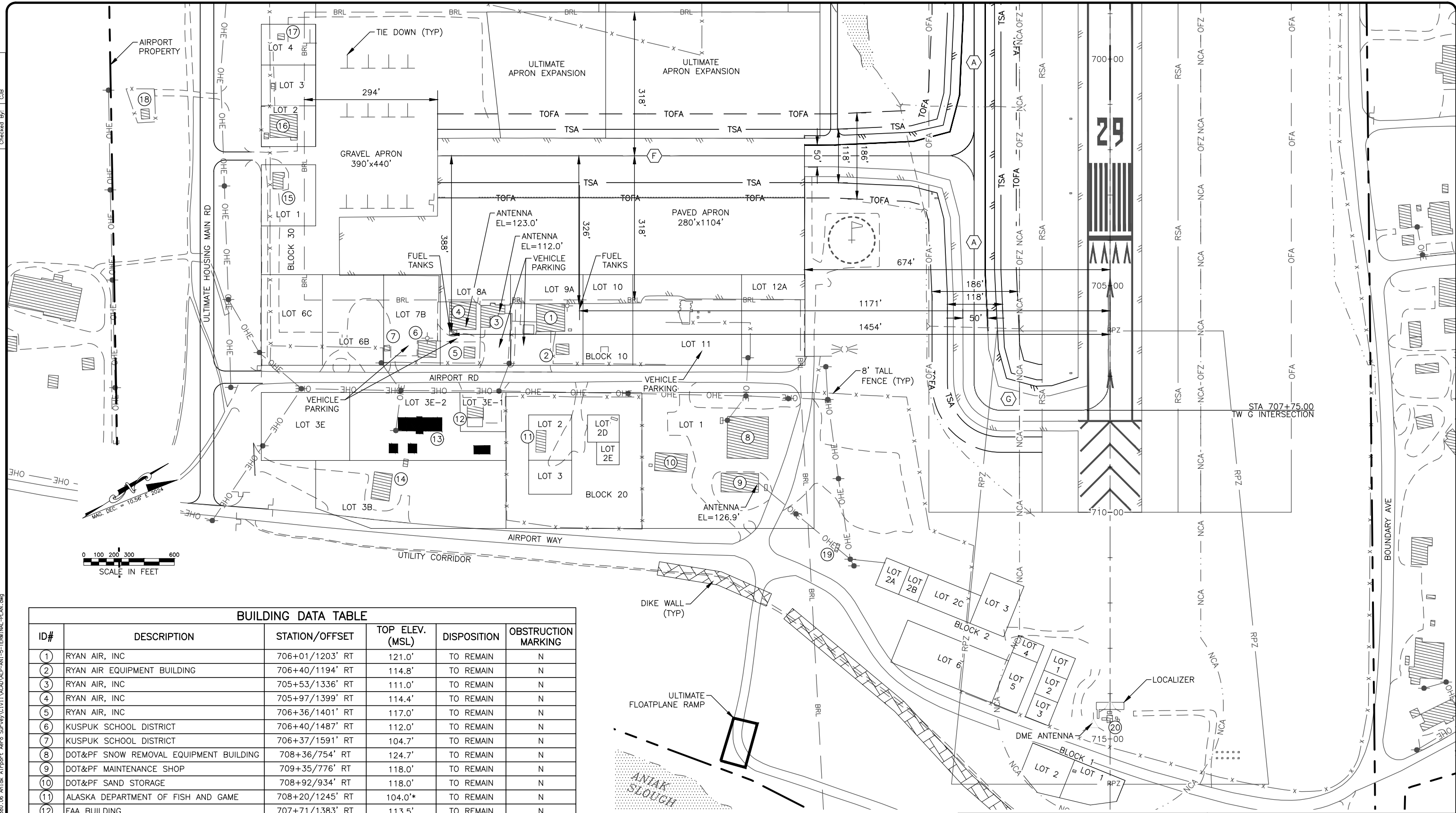
DATE: 1/24/2023
 SHEET: 6 OF 17

NO.	DATE	BY	REVISION

AVA 1/24/2023 AS-BUILT UPDATE, ANI RW SHIFT (2528070000)
 BY DATE REVISION

Designed By: MM
 Drawn By: ANA
 Checked By: CUB

Project Path: 1/24/2023, 2:48 PM
 Layout Name: ALP-5-Terminal-Plan.dwg
 File Name: Z:\proj\sect\2380_06 aniak Airport Aero Survey\G:\1\ACAD\ALP-ANI-5-Terminal-Plan.dwg



BUILDING DATA TABLE

ID#	DESCRIPTION	STATION/OFFSET	TOP ELEV. (MSL)	DISPOSITION	OBSTRUCTION MARKING
1	RYAN AIR, INC	706+01/1203' RT	121.0'	TO REMAIN	N
2	RYAN AIR EQUIPMENT BUILDING	706+40/1194' RT	114.8'	TO REMAIN	N
3	RYAN AIR, INC	705+53/1336' RT	111.0'	TO REMAIN	N
4	RYAN AIR, INC	705+97/1399' RT	114.4'	TO REMAIN	N
5	RYAN AIR, INC	706+36/1401' RT	117.0'	TO REMAIN	N
6	KUSPUK SCHOOL DISTRICT	706+40/1487' RT	112.0'	TO REMAIN	N
7	KUSPUK SCHOOL DISTRICT	706+37/1591' RT	104.7'	TO REMAIN	N
8	DOT&PF SNOW REMOVAL EQUIPMENT BUILDING	708+36/754' RT	124.7'	TO REMAIN	N
9	DOT&PF MAINTENANCE SHOP	709+35/776' RT	118.0'	TO REMAIN	N
10	DOT&PF SAND STORAGE	708+92/934' RT	118.0'	TO REMAIN	N
11	ALASKA DEPARTMENT OF FISH AND GAME	708+20/1245' RT	104.0*	TO REMAIN	N
12	FAA BUILDING	707+71/1383' RT	113.5'	TO REMAIN	N
13	TROOPER COMPLEX	708+31/1479.6' RT	-	TO CONSTRUCT	N
14	CITY OF ANIAK MAINTENANCE SHOP	709+16/1584' RT	115.4'	TO REMAIN	N
15	ROBERT & GRAIL VANDERPOOL	702+56/1822' RT	109.0'	TO REMAIN	N
16	BUSH-TELL AIR (VENT)	701+78/1794' RT	109.0'	TO REMAIN	N
17	ALASKA DEPARTMENT OF NATURAL RESOURCE	699+51/1822' RT	97.0'	TO REMAIN	N
18	CITY OF ANIAK LIFT STATION	701+31/2120' RT	107.0'	TO REMAIN	N
19	FAA	710+71/596' RT	103.0'	TO REMAIN	N
20	FAA	714+48/CL	111.6'	TO REMAIN	N

* NO BUILDING HEIGHT INFORMATION OBTAINED FROM SURVEY, TOP ELEVATION ESTIMATED AS GROUND PLUS 10 FEET.

STATE OF ALASKA DEPARTMENT OF TRANSPORTATION AND PUBLIC FACILITIES CENTRAL REGION		DATE: 1/24/2023
ANIAK AIRPORT ANIAK, ALASKA AIRPORT LAYOUT PLAN		SHEET: 7
ULTIMATE TERMINAL PLAN		OF 17
BY: DATE:	AS-BUILT UPDATE, ANI RW SHIFT (Z528070000)	REVISION

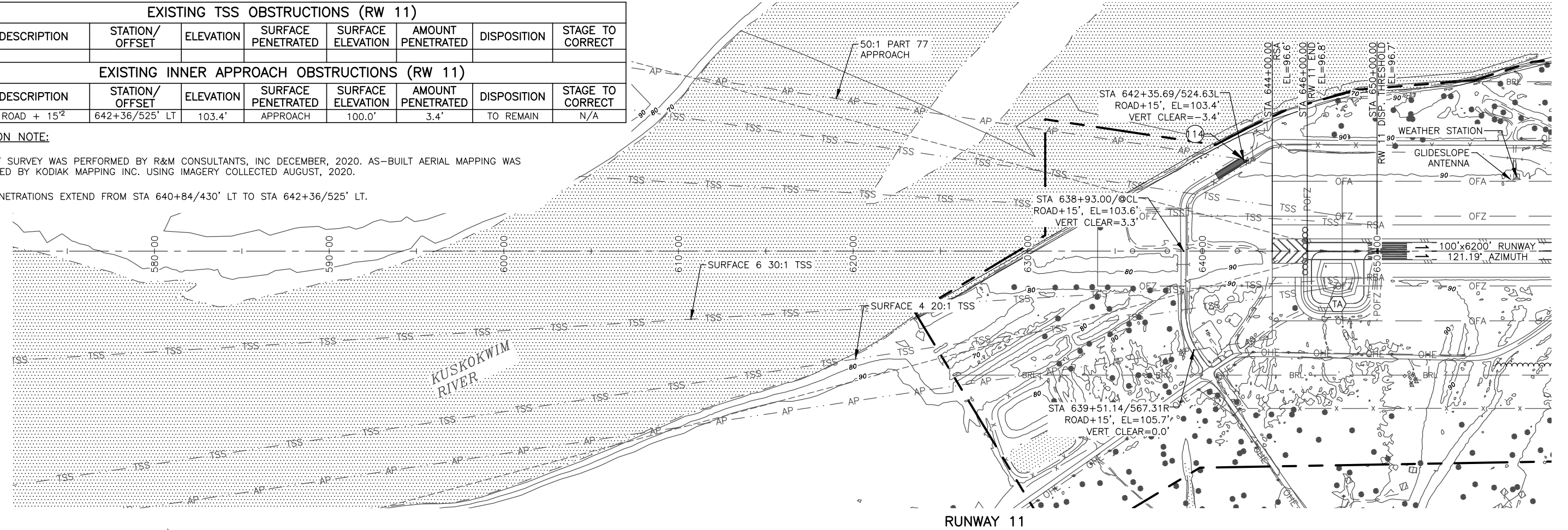
Date Plotted: 1/24/2023, 2:48 PM
 Layout Name: ALP-8
 File Name: Z:\proj\act\2380_06\Aniak Airport Aero Survey\G:\1\ACAD\ALP-ANI-6-8-APRCH-SURF-NEAR_TERM.dwg
 Drawn By: AWA
 Checked By: CUB

EXISTING TSS OBSTRUCTIONS (RW 11)								
ID#	DESCRIPTION	STATION/OFFSET	ELEVATION	SURFACE PENETRATED	SURFACE ELEVATION	AMOUNT PENETRATED	DISPOSITION	STAGE TO CORRECT
NONE								

EXISTING INNER APPROACH OBSTRUCTIONS (RW 11)								
ID#	DESCRIPTION	STATION/OFFSET	ELEVATION	SURFACE PENETRATED	SURFACE ELEVATION	AMOUNT PENETRATED	DISPOSITION	STAGE TO CORRECT
114	ROAD + 15' ²	642+36/525' LT	103.4'	APPROACH	100.0'	3.4'	TO REMAIN	N/A

OBSTRUCTION NOTE:

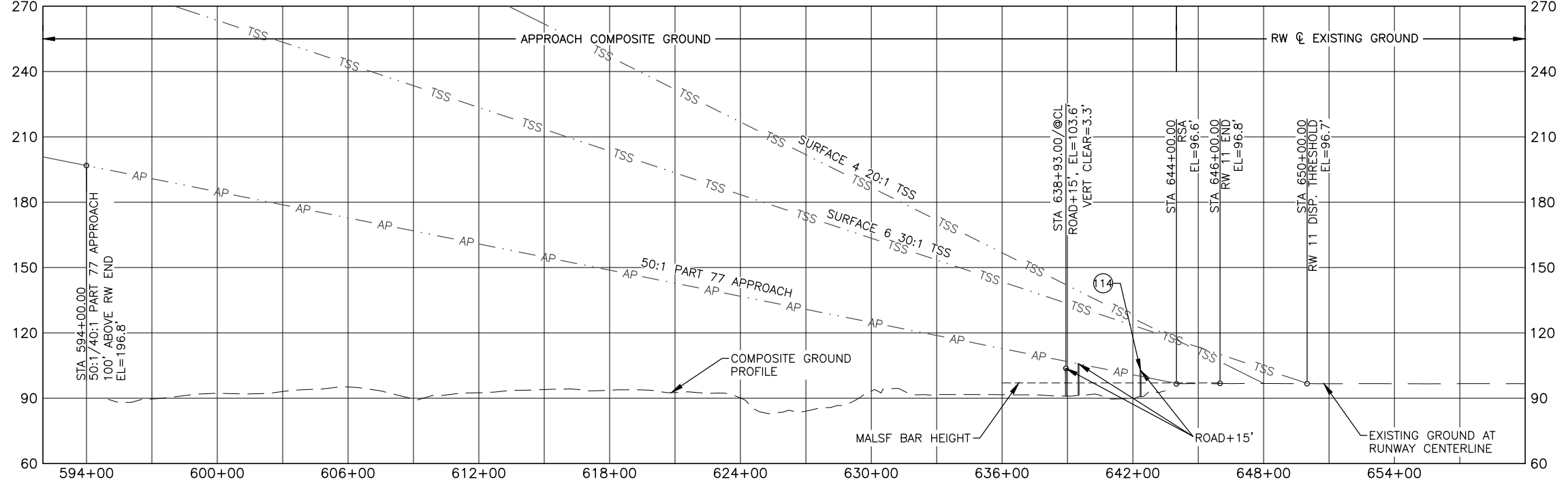
- AS-BUILT SURVEY WAS PERFORMED BY R&M CONSULTANTS, INC DECEMBER, 2020. AS-BUILT AERIAL MAPPING WAS PERFORMED BY KODIAK MAPPING INC. USING IMAGERY COLLECTED AUGUST, 2020.
- ROAD PENETRATIONS EXTEND FROM STA 640+84/430' LT TO STA 642+36/525' LT.



LEGEND

- FAR PART 77 TERRAIN OBSTRUCTION

HORIZONTAL TO VERTICAL RATIO 10:1



NOTES:

- THRESHOLD SITING CRITERIA FOR RW 11 IS DEFINED PER FAA AC 150/5300-13B, TABLE 3-3, SURFACE 4 FOR APPROACH END OF RUNWAYS THAT SUPPORTS IFR CIRCLING PROCEDURES AND PROCEDURES ONLY PROVIDING LATERAL GUIDANCE HAVING VISIBILITY MINIMUMS GREATER THAN OR EQUAL TO 3/4 STATUTE MILE AND TABLE 3-4, SURFACE 6 FOR APPROACH END OF RUNWAYS PROVIDING ILS, MMLS, PAR, AND LAD WITH GLIDEPATH, LPV, LNAV/VNAV, RNP, OR GLS.
- THE CONTROLLING OBSTRUCTION FOR THE APPROACH TO RUNWAY 11 IS A ROADWAY. THE OBSTRUCTION CLEARANCE SLOPE IS ESTABLISHED AS 24:1.
- SEE AIRSPACE PART 77 SHEET FOR OBSTRUCTIONS TO PART 77 SURFACE.
- (X) TAXIWAY IDENTIFIER, SEE AIRPORT DATA SHEET.

NO.	DATE	REVISION

STATE OF ALASKA
DEPARTMENT OF TRANSPORTATION
AND PUBLIC FACILITIES
CENTRAL REGION

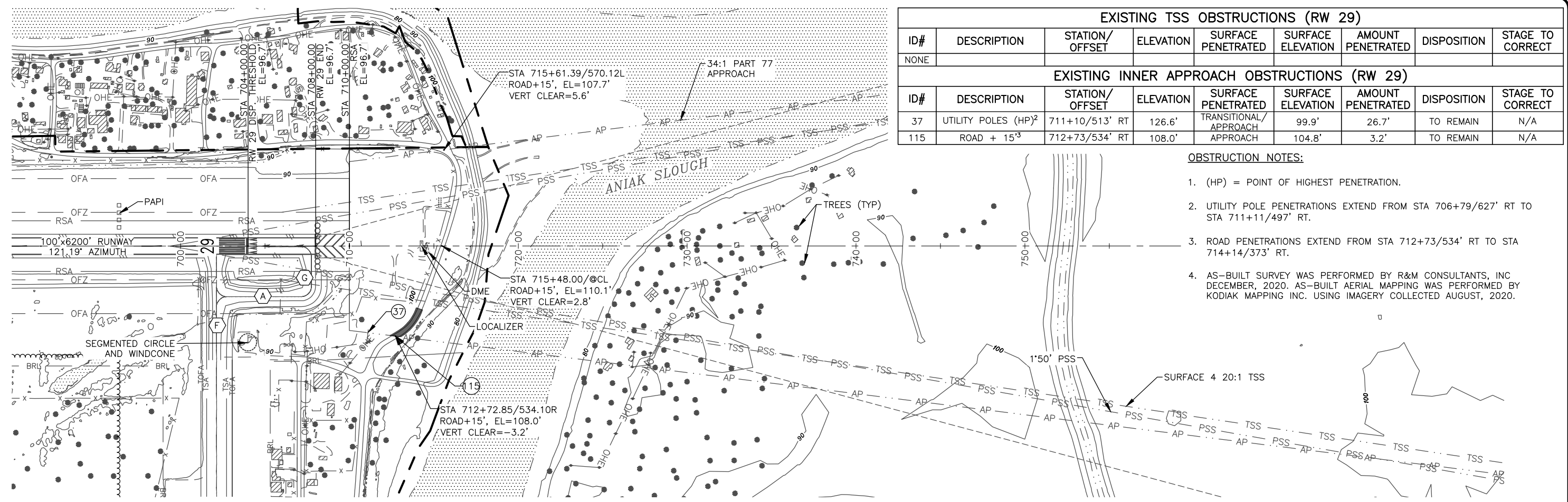
ANIAK AIRPORT
 ANIAK, ALASKA
 AIRPORT LAYOUT PLAN

EXISTING INNER PORTION OF RW 11 APPROACH SURFACE

DATE: 1/24/2023
 SHEET: 8 OF 17

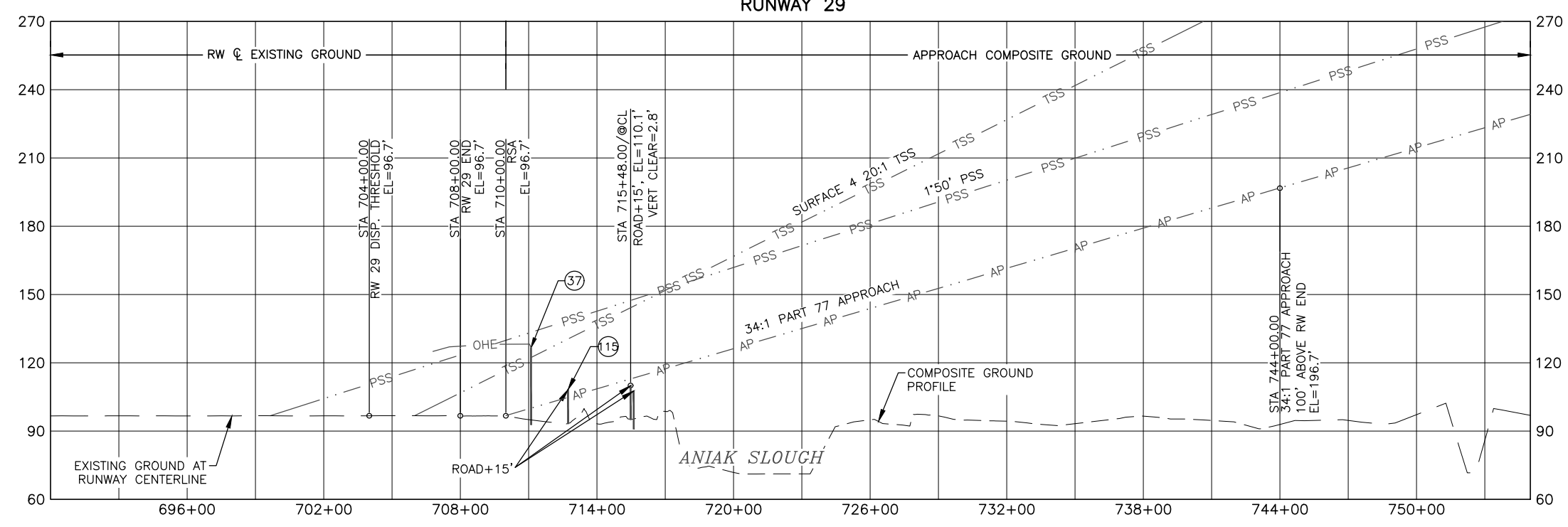
BY: AWA DATE: 1/24/2023 AS-BUILT UPDATE, ANI RW SHIFT (Z528070000)
 REVISION:

Date Plotted: 1/24/2023, 2:48 PM
 Layout Name: ALP
 File Name: Z:\proj\sect\2380_06\Aniak Airport Aero Survey\G1\1\ACAD\ALP-ANI-6-8-APRCH-SURF-NEAR_TERM.dwg



EXISTING TSS OBSTRUCTIONS (RW 29)									
ID#	DESCRIPTION	STATION/OFFSET	ELEVATION	SURFACE PENETRATED	SURFACE ELEVATION	AMOUNT PENETRATED	DISPOSITION	STAGE TO CORRECT	
NONE									
EXISTING INNER APPROACH OBSTRUCTIONS (RW 29)									
ID#	DESCRIPTION	STATION/OFFSET	ELEVATION	SURFACE PENETRATED	SURFACE ELEVATION	AMOUNT PENETRATED	DISPOSITION	STAGE TO CORRECT	
37	UTILITY POLES (HP) ²	711+10/513' RT	126.6'	TRANSITIONAL/ APPROACH	99.9'	26.7'	TO REMAIN	N/A	
115	ROAD + 15' ³	712+73/534' RT	108.0'	APPROACH	104.8'	3.2'	TO REMAIN	N/A	

- OBSTRUCTION NOTES:**
- (HP) = POINT OF HIGHEST PENETRATION.
 - UTILITY POLE PENETRATIONS EXTEND FROM STA 706+79/627' RT TO STA 711+11/497' RT.
 - ROAD PENETRATIONS EXTEND FROM STA 712+73/534' RT TO STA 714+14/373' RT.
 - AS-BUILT SURVEY WAS PERFORMED BY R&M CONSULTANTS, INC. DECEMBER, 2020. AS-BUILT AERIAL MAPPING WAS PERFORMED BY KODIAK MAPPING INC. USING IMAGERY COLLECTED AUGUST, 2020.



SCALE IN FEET
 HORIZONTAL TO VERTICAL RATIO 10:1

LEGEND
 FAR PART 77 TERRAIN OBSTRUCTION

- NOTES:**
- THRESHOLD SITING CRITERIA FOR RW 29 IS DEFINED PER FAA AC 150/5300-13B, TABLE 3-3, SURFACE 4 FOR APPROACH END OF RUNWAYS THAT SUPPORTS IFR CIRCLING PROCEDURES AND PROCEDURES ONLY PROVIDING LATERAL GUIDANCE HAVING VISIBILITY MINIMUMS GREATER THAN OR EQUAL TO 3/4 STATUTE MILE.
 - THE CONTROLLING OBSTRUCTION FOR THE APPROACH TO RUNWAY 29 IS A UTILITY POLE. THE OBSTRUCTION CLEARANCE SLOPE IS ESTABLISHED AS 3:1.
 - SEE AIRSPACE PART 77 SHEET FOR OBSTRUCTIONS TO PART 77 SURFACES.
 - (X) TAXIWAY IDENTIFIER, SEE AIRPORT DATA SHEET.

STATE OF ALASKA DEPARTMENT OF TRANSPORTATION AND PUBLIC FACILITIES CENTRAL REGION	
ANIAK AIRPORT ANIAK, ALASKA AIRPORT LAYOUT PLAN EXISTING INNER PORTION OF RW 29 APPROACH SURFACE	
DATE: 1/24/2023 SHEET: 9 OF 17	BY: _____ DATE: _____ REVISION: _____

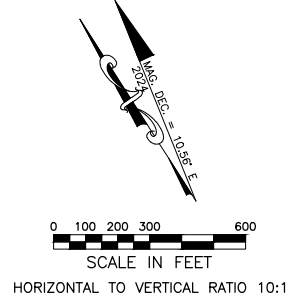
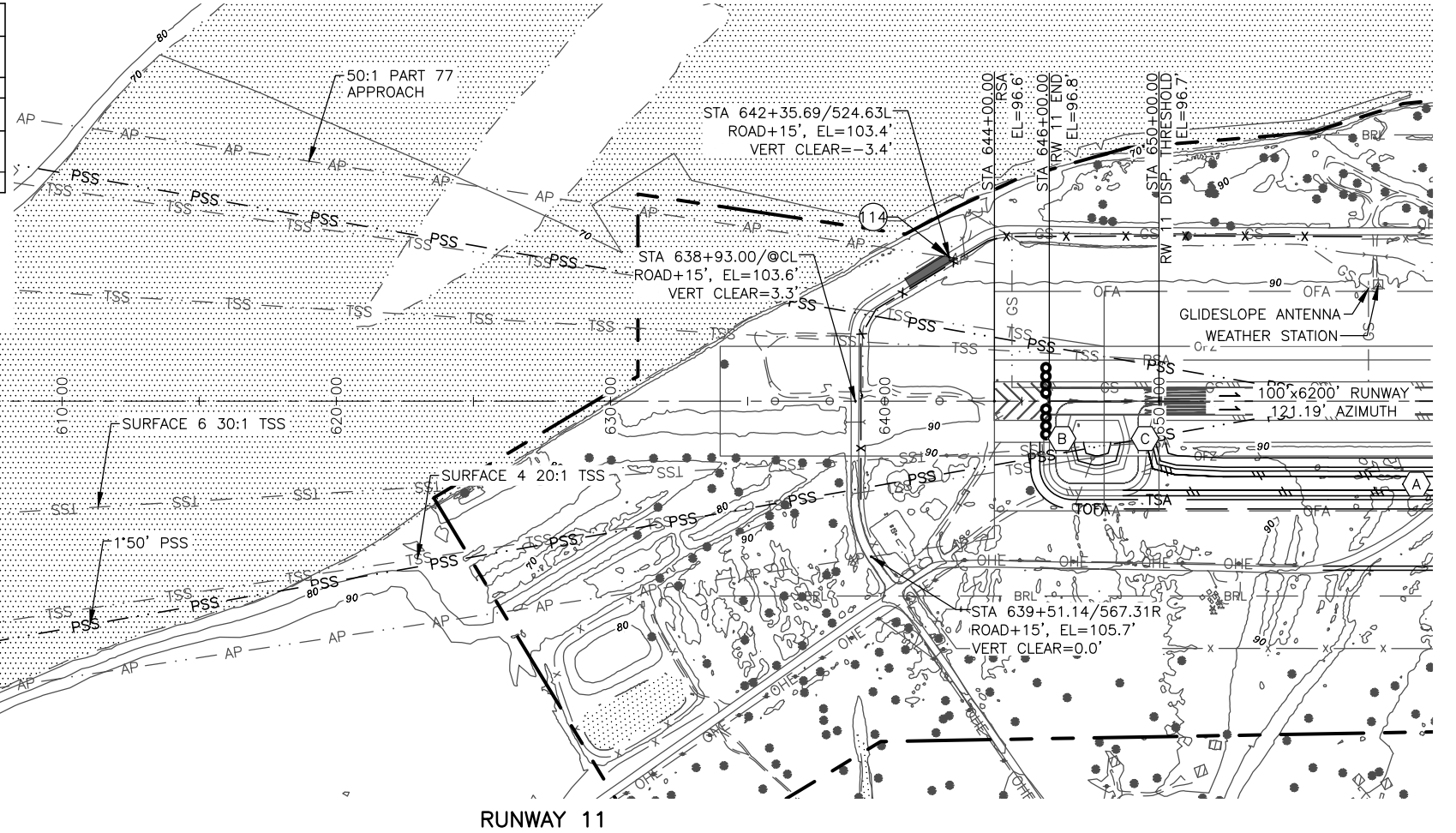
Date Plotted: 1/24/2023, 2:50 PM
 Layout Name: ALP-10
 File Name: Z:\proj\sect\2380_06 Aniak Airport Aero Survey\G:\1\ACAD\ALP-ANI-9-11-APRCH-SURF-ULTIMATE.dwg

ULTIMATE TSS OBSTRUCTIONS (RW 11)								
ID#	DESCRIPTION	STATION/OFFSET	ELEVATION	SURFACE PENETRATED	SURFACE ELEVATION	AMOUNT PENETRATED	DISPOSITION	STAGE TO CORRECT
NONE								

ULTIMATE INNER APPROACH OBSTRUCTIONS (RW 11)								
ID#	DESCRIPTION	STATION/OFFSET	ELEVATION	SURFACE PENETRATED	SURFACE ELEVATION	AMOUNT PENETRATED	DISPOSITION	STAGE TO CORRECT
114	ROAD + 15'	642+36/525' LT	103.4'	APPROACH	100.0'	3.4'	TO REMAIN	N/A

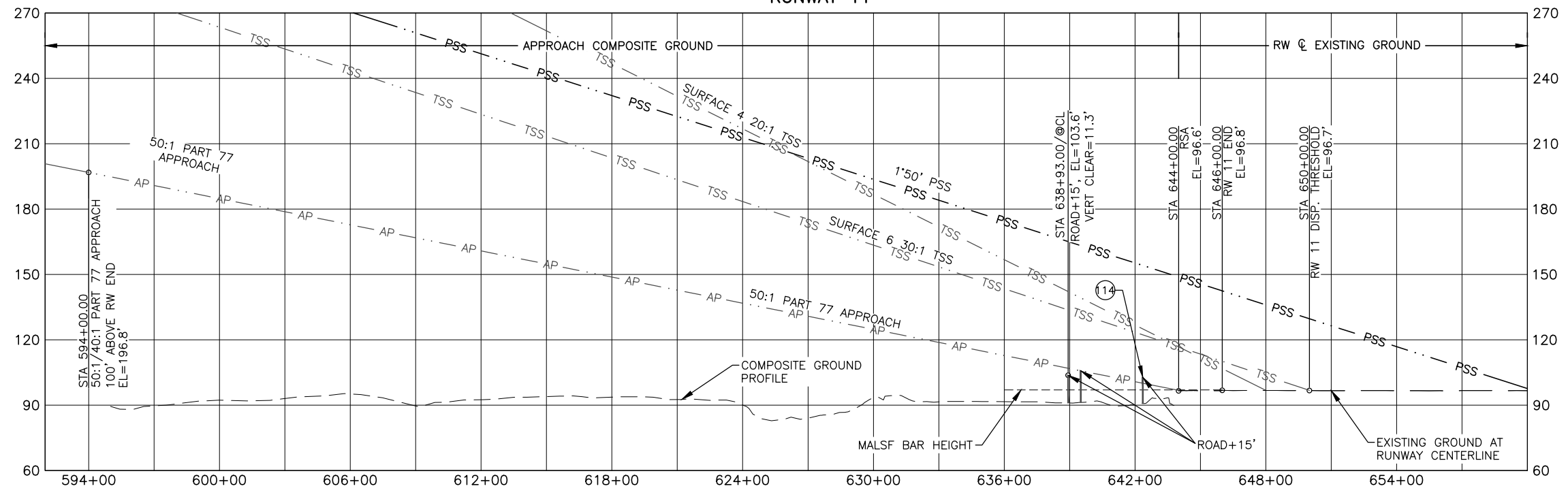
OBSTRUCTION NOTE:

- AS-BUILT SURVEY WAS PERFORMED BY R&M CONSULTANTS, INC DECEMBER, 2020. AS-BUILT AERIAL MAPPING WAS PERFORMED BY KODIAK MAPPING INC. USING IMAGERY COLLECTED AUGUST, 2020.
- ROAD PENETRATIONS EXTEND FROM STA 640+84/430' LT TO STA 642+36/525' LT.



LEGEND

	FAR PART 77 TERRAIN OBSTRUCTION
--	---------------------------------



NOTES:

- THRESHOLD SITING CRITERIA FOR RW 11 IS DEFINED PER FAA AC 150/5300-13B, TABLE 3-3, SURFACE 4 FOR APPROACH END OF RUNWAYS THAT SUPPORTS IFR CIRCLING PROCEDURES AND PROCEDURES ONLY PROVIDING LATERAL GUIDANCE HAVING VISIBILITY MINIMUMS GREATER THAN OR EQUAL TO 3/4 STATUTE MILE AND TABLE 3-4, SURFACE 6 FOR APPROACH END OF RUNWAYS PROVIDING ILS, MMLS, PAR, AND LAD WITH GLIDEPATH, LPV, LNAV/VNAV, RNP, OR GLS.
- THE CONTROLLING OBSTRUCTION FOR THE APPROACH TO RUNWAY 11 IS A ROADWAY. THE OBSTRUCTION CLEARANCE SLOPE IS ESTABLISHED AS 24:1.
- SEE AIRSPACE PART 77 SHEET FOR OBSTRUCTIONS TO PART 77 SURFACES.
- (X) TAXIWAY IDENTIFIER, SEE AIRPORT DATA SHEET.

NO.	DATE	REVISION

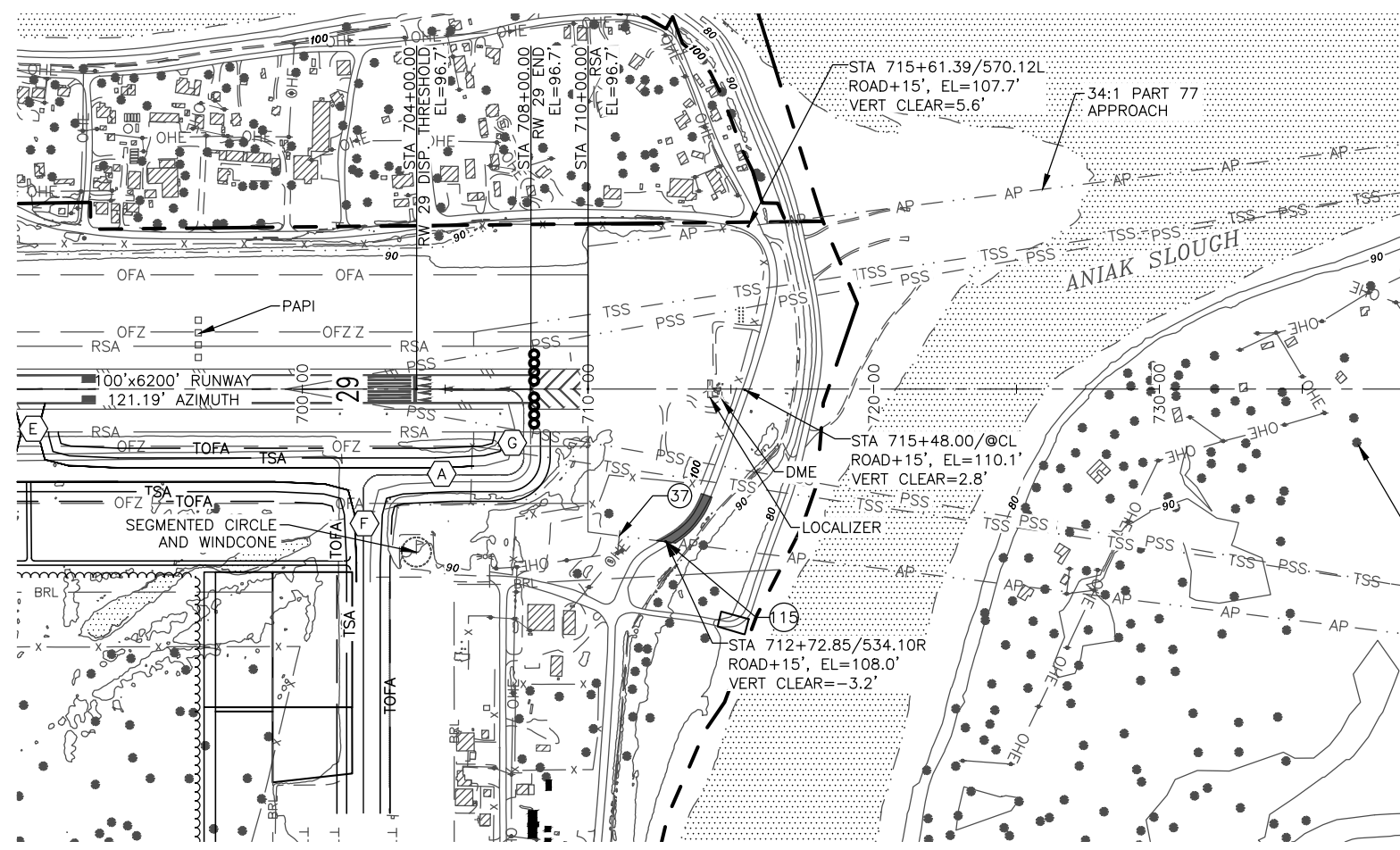
STATE OF ALASKA
DEPARTMENT OF TRANSPORTATION
AND PUBLIC FACILITIES
CENTRAL REGION

ANIAK AIRPORT
 ANIAK, ALASKA
 AIRPORT LAYOUT PLAN

ULTIMATE INNER PORTION OF RW 11
 APPROACH SURFACE

DATE: 1/24/2023 SHEET: 10 OF 17	DATE: 1/24/2023 SHEET: 10 OF 17
------------------------------------	------------------------------------

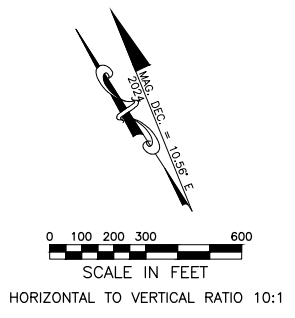
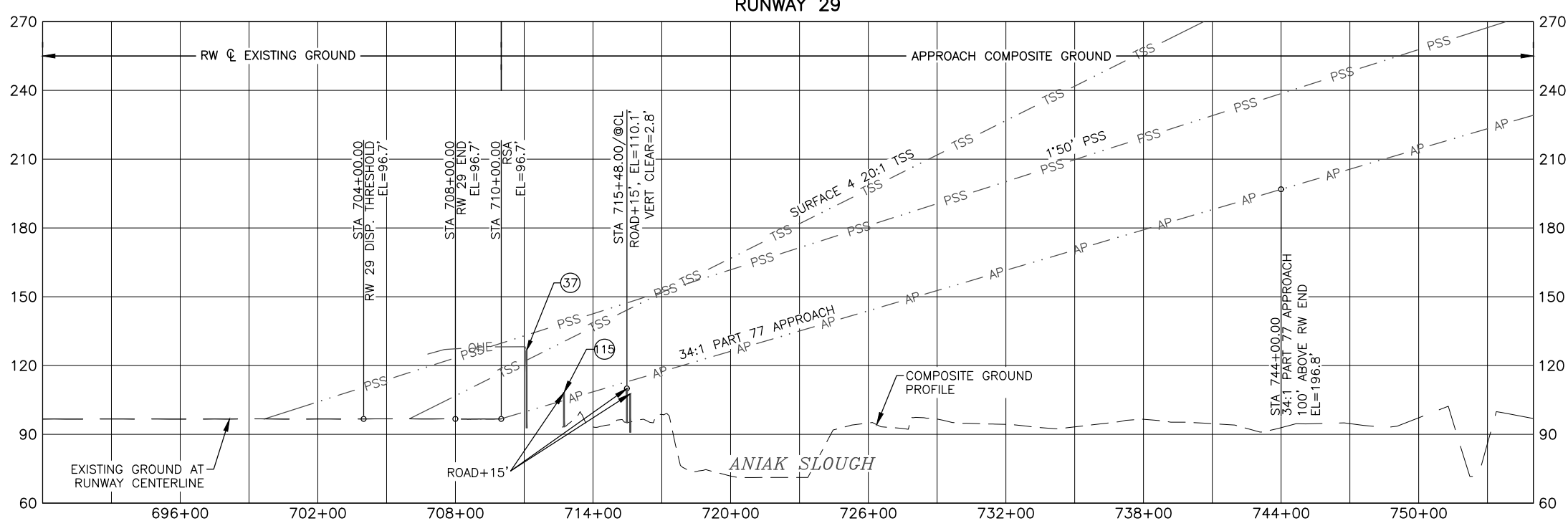
Date Plotted: 1/24/2023, 2:50 PM
 Layout Name: ALP-1
 File Name: Z:\projects\2380_06 Aniak Airport Aero Survey\G:\1\ACAD\ALP-ANI-9-11-APRCH-SURF-ULTIMATE.dwg



ULTIMATE TSS OBSTRUCTIONS (RW 29)									
ID#	DESCRIPTION	STATION/OFFSET	ELEVATION	SURFACE PENETRATED	SURFACE ELEVATION	AMOUNT PENETRATED	DISPOSITION	STAGE TO CORRECT	
NONE									

ULTIMATE INNER APPROACH OBSTRUCTIONS (RW 29)									
ID#	DESCRIPTION	STATION/OFFSET	ELEVATION	SURFACE PENETRATED	SURFACE ELEVATION	AMOUNT PENETRATED	DISPOSITION	STAGE TO CORRECT	
37	UTILITY POLES (HP) ²	711+10/513' RT	126.6'	TRANSITIONAL/ APPROACH	99.9'	26.7'	TO REMAIN	N/A	
115	ROAD + 15' ³	712+73/534' RT	108.0'	APPROACH	104.8'	3.2'	TO REMAIN	N/A	

- OBSTRUCTION NOTES:**
- (HP) = POINT OF HIGHEST PENETRATION.
 - UTILITY POLE PENETRATIONS EXTEND FROM STA 706+79/627' RT TO STA 711+11/497' RT.
 - ROAD PENETRATIONS EXTEND FROM STA 712+73/534' RT TO STA 714+14/373' RT.
 - AS-BUILT SURVEY WAS PERFORMED BY R&M CONSULTANTS, INC DECEMBER, 2020. AS-BUILT AERIAL MAPPING WAS PERFORMED BY KODIAK MAPPING INC. USING IMAGERY COLLECTED AUGUST, 2020.



LEGEND

FAR PART 77 TERRAIN OBSTRUCTION

- NOTES:**
- THRESHOLD SITING CRITERIA FOR RW 29 IS DEFINED PER FAA AC 150/5300-13B, TABLE 3-3, SURFACE 4 FOR APPROACH END OF RUNWAYS THAT SUPPORTS IFR CIRCLING PROCEDURES AND PROCEDURES ONLY PROVIDING LATERAL GUIDANCE HAVING VISIBILITY MINIMUMS GREATER THAN OR EQUAL TO 3/4 STATUTE MILE.
 - THE CONTROLLING OBSTRUCTION FOR THE APPROACH TO RUNWAY 29 IS A UTILITY POLE. THE OBSTRUCTION CLEARANCE SLOPE IS ESTABLISHED AS 3:1.
 - (X) TAXIWAY IDENTIFIER, SEE AIRPORT DATA SHEET.

NO.	DATE	REVISION

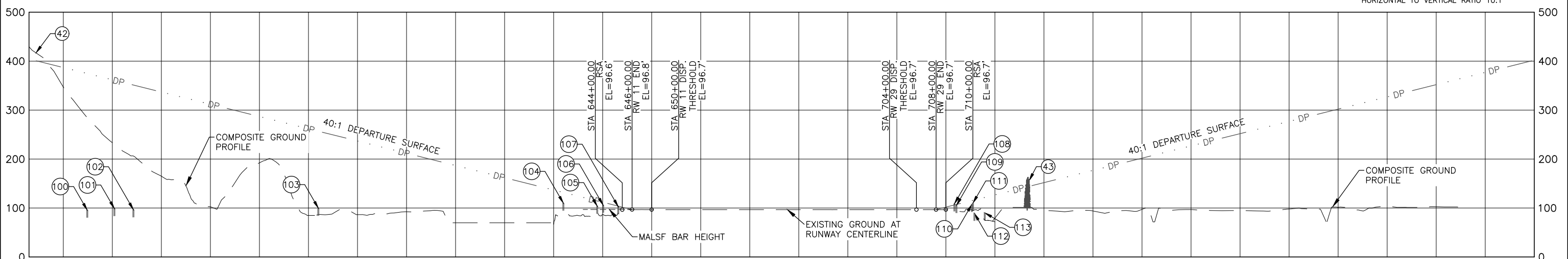
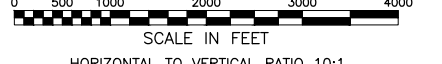
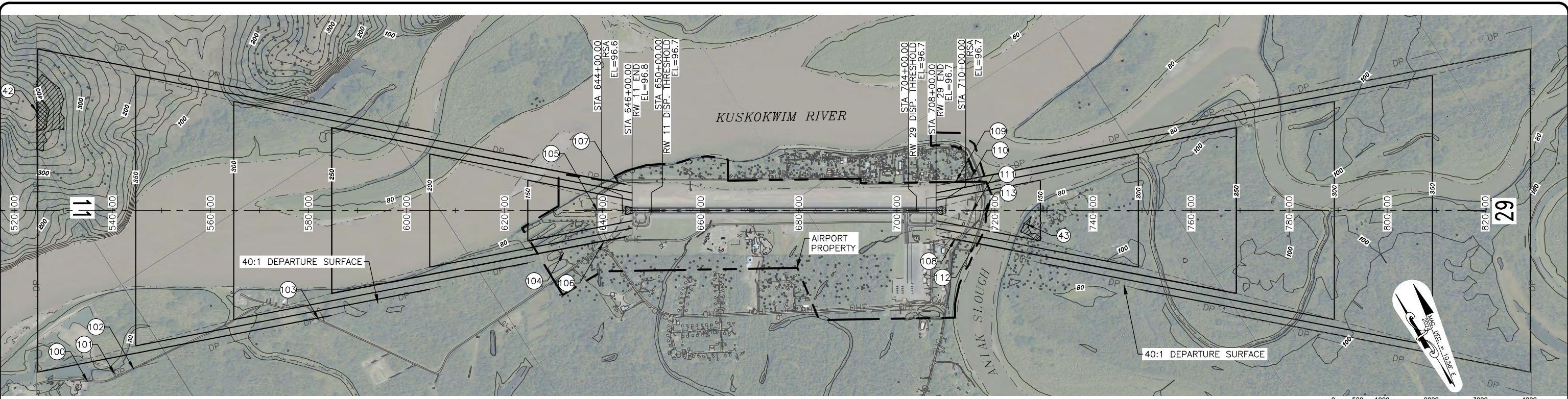
STATE OF ALASKA
DEPARTMENT OF TRANSPORTATION
AND PUBLIC FACILITIES
CENTRAL REGION

ANIAK AIRPORT
 ANIAK, ALASKA
 AIRPORT LAYOUT PLAN

ULTIMATE INNER PORTION OF RW 11
 APPROACH SURFACE

DATE: 1/24/2023
 SHEET: 10 OF 17

Date Plotted: 1/24/2023, 2:51 PM
 Layout Name: ALP-14
 File Name: Z:\proj\sect\2380_06 Aniak Airport Aero Survey\G:\1\ACAD\ALP-ANI-12-DEPT-SURF-NEAR.dwg



RW 11 DEPARTURE SURFACE OBSTRUCTION & SIGNIFICANT OBJECT TABLE								
ID#	DESCRIPTION	STATION/OFFSET	ELEVATION	SURFACE PENETRATED	SURFACE ELEVATION	AMOUNT PENETRATED	DISPOSITION	STAGE TO CORRECT
42	TERRAIN (HP)	524+50/2034' LT	456.9'	DEPARTURE	400.8'	56.1'	TO REMAIN	N/A
100	ROAD +15'	534+89/3477' RT	95.6'	NONE	100.8'	NONE	TO REMAIN	N/A
101	ROAD +15'	540+42/3329' RT	98.9'	NONE	100.8'	NONE	TO REMAIN	N/A
102	ROAD +15'	544+30/3225' RT	96.4'	NONE	100.8'	NONE	TO REMAIN	N/A
103	ROAD +15'	582+02/2214' RT	99.6'	NONE	100.8'	NONE	TO REMAIN	N/A
104	ROAD +15'	631+98/876' RT	109.9'	NONE	281.6'	NONE	TO REMAIN	N/A
105	ROAD +15'	638+92/∅	103.7'	NONE	114.5'	NONE	TO REMAIN	N/A
106	ROAD +15'	640+11/658' RT	105.9'	NONE	261.5'	NONE	TO REMAIN	N/A
107	ROAD +15'	643+19/575' LT	102.6'	NONE	253.8'	NONE	TO REMAIN	N/A

RW 29 DEPARTURE SURFACE OBSTRUCTION & SIGNIFICANT OBJECT TABLE								
ID#	DESCRIPTION	STATION/OFFSET	ELEVATION	SURFACE PENETRATED	SURFACE ELEVATION	AMOUNT PENETRATED	DISPOSITION	STAGE TO CORRECT
43	TREES (HP)	726+54/278' RT	162.9'	DEPARTURE	143.2'	19.7'	TO REMAIN	N/A
108	ROAD +15'	711+74/600' RT	108.4'	NONE	256.2'	NONE	TO REMAIN	N/A
109	ROAD +15'	712+16/612' LT	105.2'	NONE	257.2'	NONE	TO REMAIN	N/A
110	ROAD +15'	715+30/696' LT	107.3'	NONE	265.1'	NONE	TO REMAIN	N/A
111	ROAD +15'	715+52/∅	110.0'	NONE	115.6'	NONE	TO REMAIN	N/A
112	ROAD +15'	715+83/710' RT	89.2'	NONE	266.4'	NONE	TO REMAIN	N/A
113	ROAD +15'	717+93/∅	90.1'	NONE	121.7'	NONE	TO REMAIN	N/A

OBSTRUCTION NOTE:

- 1. (HP) = POINT OF HIGHEST PENETRATION

LEGEND

- DEPARTURE SURFACE TERRAIN PENETRATIONS
- DEPARTURE SURFACE TREE PENETRATIONS

NOTE:

- 1. DEPARTURE SURFACES ARE DEFINED PER FAA AC 150/5300-13B, TABLE 3-5, SURFACE 7.

OBSTRUCTION NOTE:

- 1. (HP) = POINT OF HIGHEST PENETRATION

NO.	DATE	REVISION

STATE OF ALASKA
DEPARTMENT OF TRANSPORTATION
AND PUBLIC FACILITIES
CENTRAL REGION

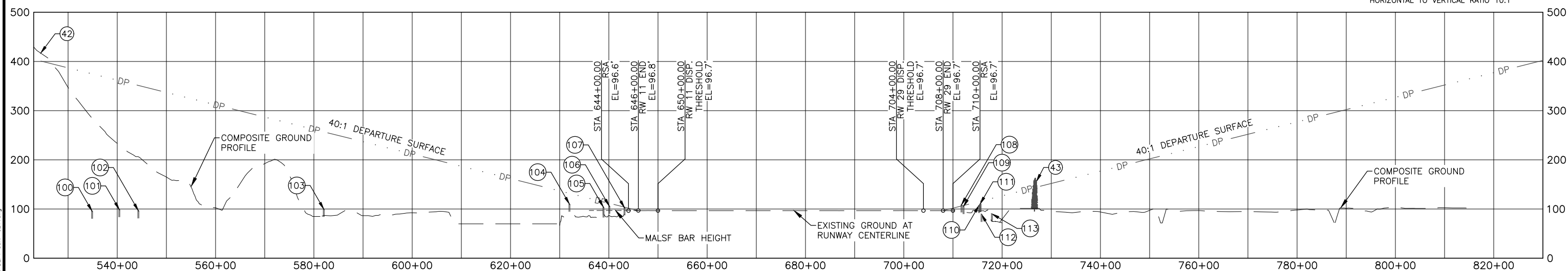
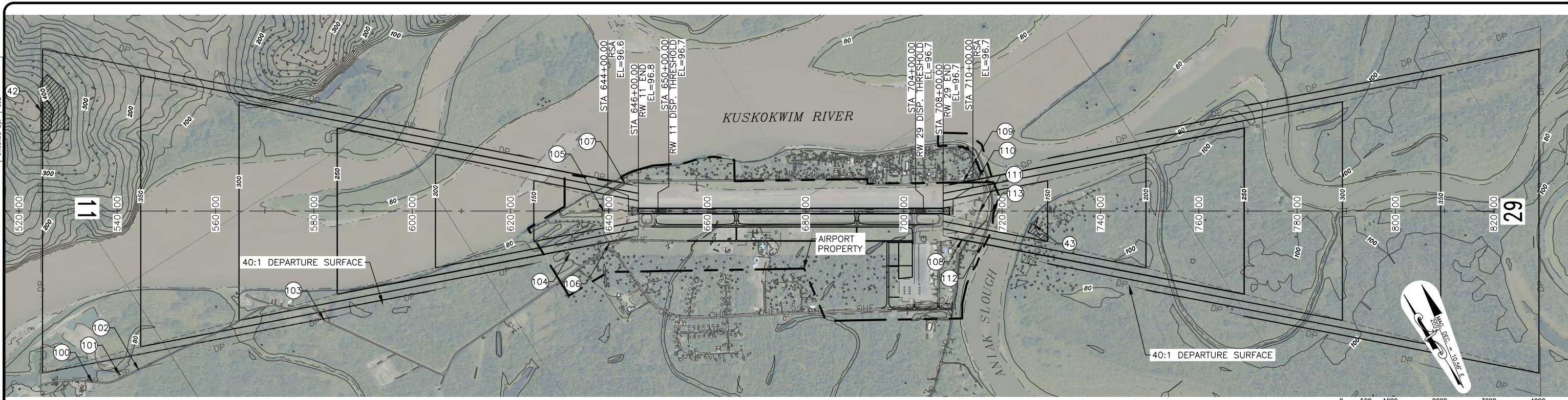
ANIAK AIRPORT
 ANIAK, ALASKA
 AIRPORT LAYOUT PLAN

EXISTING DEPARTURE SURFACES

DATE: 1/24/2023
 SHEET: 12 OF 17

BY: AVA 1/24/2023 AS-BUILT UPDATE, ANI RW SHIFT (2528070000)
 DATE: REVISION

Date Plotted: 1/24/2023, 2:52 PM
 Layout Name: ALP-15
 File Name: Z:\proj\sect\2380_06 Aniak Airport Aero Survey\G:\1\ACAD\ALP-ANI-15-DEPT-SURF-ULT.dwg
 Designed By: MM
 Drawn By: AVA
 Checked By: CJB



RW 11 DEPARTURE SURFACE OBSTRUCTION & SIGNIFICANT OBJECT TABLE								
ID#	DESCRIPTION	STATION/OFFSET	ELEVATION	SURFACE PENETRATED	SURFACE ELEVATION	AMOUNT PENETRATED	DISPOSITION	STAGE TO CORRECT
42	TERRAIN (HP)	524+50/2034' LT	456.9'	DEPARTURE	400.8'	56.1'	TO REMAIN	N/A
100	ROAD +15'	534+89/3477' RT	95.6'	NONE	400.8'	NONE	TO REMAIN	N/A
101	ROAD +15'	540+42/3329' RT	98.9'	NONE	400.8'	NONE	TO REMAIN	N/A
102	ROAD +15'	544+30/3225' RT	96.4'	NONE	400.8'	NONE	TO REMAIN	N/A
103	ROAD +15'	582+02/2214' RT	99.6'	NONE	400.8'	NONE	TO REMAIN	N/A
104	ROAD +15'	631+98/876' RT	109.9'	NONE	281.6'	NONE	TO REMAIN	N/A
105	ROAD +15'	638+92/∅	103.7'	NONE	114.5'	NONE	TO REMAIN	N/A
106	ROAD +15'	640+11/658' RT	105.9'	NONE	261.5'	NONE	TO REMAIN	N/A
107	ROAD +15'	643+19/575' LT	102.6'	NONE	253.8'	NONE	TO REMAIN	N/A

RW 29 DEPARTURE SURFACE OBSTRUCTION & SIGNIFICANT OBJECT TABLE								
ID#	DESCRIPTION	STATION/OFFSET	ELEVATION	SURFACE PENETRATED	SURFACE ELEVATION	AMOUNT PENETRATED	DISPOSITION	STAGE TO CORRECT
43	TREES (HP)	726+54/278' RT	162.9'	DEPARTURE	143.2'	19.7'	TO REMAIN	N/A
108	ROAD +15'	711+74/600' RT	108.4'	NONE	256.2'	NONE	TO REMAIN	N/A
109	ROAD +15'	712+16/612' LT	105.2'	NONE	257.2'	NONE	TO REMAIN	N/A
110	ROAD +15'	715+30/696' LT	107.3'	NONE	265.1'	NONE	TO REMAIN	N/A
111	ROAD +15'	715+52/∅	110.0'	NONE	115.6'	NONE	TO REMAIN	N/A
112	ROAD +15'	715+83/710' RT	89.2'	NONE	266.4'	NONE	TO REMAIN	N/A
113	ROAD +15'	717+93/∅	90.1'	NONE	121.7'	NONE	TO REMAIN	N/A

OBSTRUCTION NOTE:
 1. (HP) = POINT OF HIGHEST PENETRATION

OBSTRUCTION NOTE:
 1. (HP) = POINT OF HIGHEST PENETRATION

LEGEND

- DEPARTURE SURFACE TERRAIN PENETRATIONS
- DEPARTURE SURFACE TREE PENETRATIONS

NOTE:

1. DEPARTURE SURFACES ARE DEFINED PER FAA AC 150/5300-13B, TABLE 3-5, SURFACE 7.

BY	DATE	REVISION

STATE OF ALASKA
DEPARTMENT OF TRANSPORTATION
AND PUBLIC FACILITIES
CENTRAL REGION

ANIAK AIRPORT
 ANIAK, ALASKA
 AIRPORT LAYOUT PLAN

ULTIMATE DEPARTURE SURFACES

DATE:
1/24/2023
SHEET:
13
OF
17

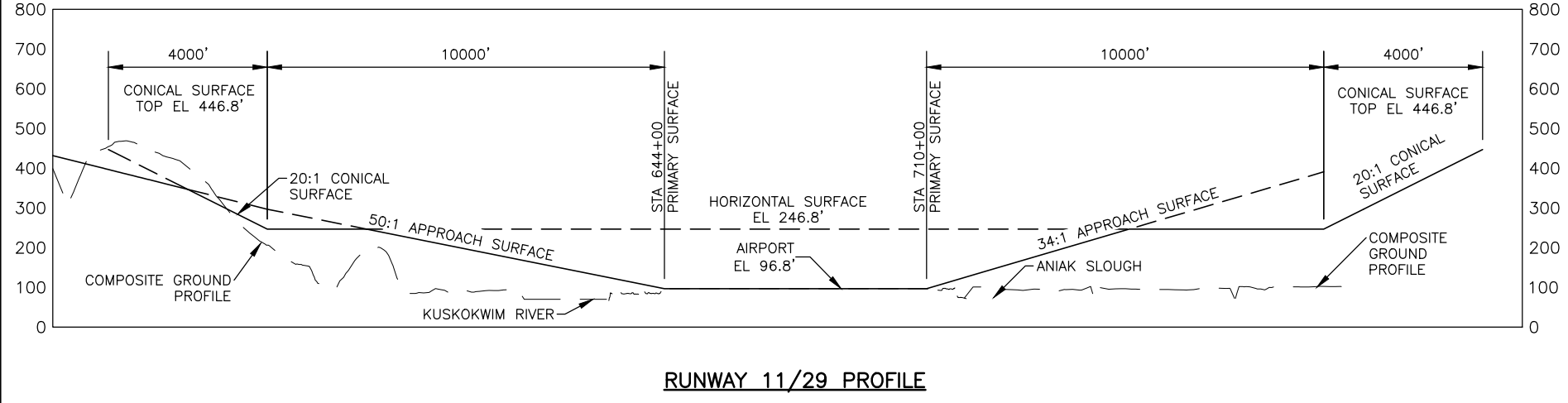
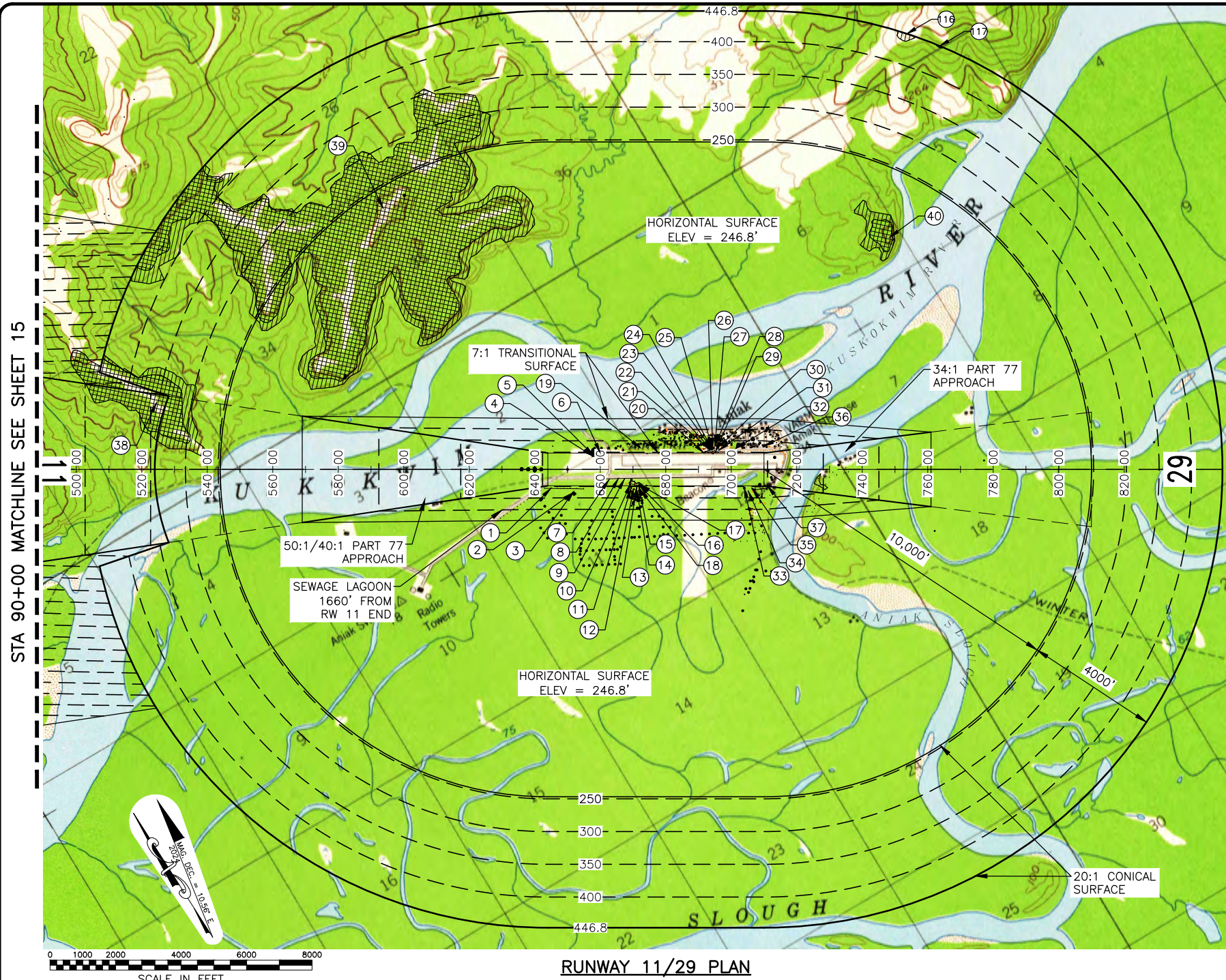
PART 77 AIRSPACE OBSTRUCTIONS TABLE

ID#	DESCRIPTION	STATION/OFFSET	ELEVATION	SURFACE PENETRATED	SURFACE ELEVATION	AMOUNT PENETRATED	DISPOSITION	STAGE TO CORRECT
1	UTILITY POLES (HP) ¹⁰	644+93/580R	124.0'	TRANSITIONAL	107.8'	16.2'	TO REMAIN	N/A
2	ANTENNA	651+60/718R	139.5'	TRANSITIONAL	128.1'	11.4'	TO REMAIN	N/A
3	ANTENNA	651+80/691R	136.0'	TRANSITIONAL	124.2'	11.8'	TO REMAIN	N/A
4	GS ANTENNA	657+64/412L	146.4'	PRIMARY	96.8'	49.6'	TO REMAIN	N/A
5	AWOS	658+00/423L	133.6'	PRIMARY	96.8'	36.8'	TO REMAIN	N/A
6	WIND CONE	660+01/505L	110.1'	TRANSITIONAL	97.6'	12.5'	TO REMAIN	N/A
7	TREE	662+65/318R	101.8'	PRIMARY	96.8'	5.0'	TO REMOVE	ULTIMATE
8	ROAD +15' (HP) ¹¹	665+50/283R	108.2'	PRIMARY	96.8'	11.4'	TO REMOVE	ULTIMATE
9	TREE	667+34/304R	103.0'	PRIMARY	96.8'	6.2'	TO REMOVE	ULTIMATE
10	FENCE (HP) ⁶	669+28/445R	109.0'	PRIMARY	96.8'	12.2'	TO REMOVE	ULTIMATE
11	BUILDING	669+45/567R	114.0'	TRANSITIONAL	106.4'	7.6'	TO REMOVE	ULTIMATE
12	BUILDING	670+18/616R	123.0'	TRANSITIONAL	113.4'	9.6'	TO REMOVE	ULTIMATE
13	CONNEX	671+15/545R	119.0'	TRANSITIONAL	103.2'	15.8'	TO REMOVE	ULTIMATE
14	BUILDING	671+30/686R	126.0'	TRANSITIONAL	123.4'	2.6'	TO REMAIN	N/A
15	BUILDING	671+81/507R	114.0'	TRANSITIONAL	97.7'	16.3'	TO REMOVE	ULTIMATE
16	TANK	671+89/485R	120.0'	PRIMARY	96.8'	23.2'	TO REMOVE	ULTIMATE
17	BUILDING	672+17/478R	108.0'	PRIMARY	96.8'	11.2'	TO REMOVE	ULTIMATE
18	UTILITY POLE	672+31/625R	132.5'	TRANSITIONAL	114.7'	17.8'	TO REMOVE	ULTIMATE
19	UTILITY POLES (HP) ⁵	672+22/659L	132.5'	TRANSITIONAL	119.3'	13.2'	TO REMAIN	N/A
20	FENCE (HP) ⁶	691+60/509L	102.0'	TRANSITIONAL	98.0'	4.0'	TO REMAIN	N/A
21	LIGHT POLE	693+58/610L	120.0'	TRANSITIONAL	112.5'	7.5'	TO REMAIN	N/A
22	FLAG POLE	693+96/596L	121.0'	TRANSITIONAL	110.5'	10.5'	TO REMAIN	N/A
23	TREE	694+25/601L	129.0'	TRANSITIONAL	111.2'	17.8'	TO REMAIN	N/A
24	BUILDING	694+07/636L	118.0'	TRANSITIONAL	116.2'	1.8'	TO REMAIN	N/A
25	ANTENNA	694+18/654L	128.0'	TRANSITIONAL	118.8'	9.2'	TO REMAIN	N/A
26	TREE	694+32/660L	128.0'	TRANSITIONAL	119.7'	8.3'	TO REMAIN	N/A
27	ANTENNA	695+03/752L	150.0'	TRANSITIONAL	132.8'	17.2'	TO REMAIN	N/A
28	BUILDING	695+13/736L	134.9'	TRANSITIONAL	130.5'	4.4'	TO REMAIN	N/A
29	ROAD +15' (HP) ⁷	695+21/539L	106.0'	TRANSITIONAL	102.4'	3.6'	TO REMAIN	N/A
30	FLAG POLE	696+18/684L	130.0'	TRANSITIONAL	123.1'	6.9'	TO REMAIN	N/A
31	LIGHT POLE	696+24/587L	125.0'	TRANSITIONAL	109.2'	15.8'	TO REMAIN	N/A
32	TREES (HP)	701+54/644L	139.0'	TRANSITIONAL	117.4'	21.6'	TO REMAIN	N/A
33	WIND CONE	703+99/570R	110.4'	TRANSITIONAL	106.8'	3.6'	TO REMAIN	N/A
34	LIGHT POLE	705+28/678R	129.0'	TRANSITIONAL	122.2'	6.8'	TO REMAIN	N/A
35	ROTATING BEACON	706+40/586R	135.0'	TRANSITIONAL	109.6'	25.4'	TO REMAIN	N/A
36	TREES (HP)	709+94/708L	142.0'	TRANSITIONAL	131.0'	11.0'	TO REMAIN	N/A
37	UTILITY POLES (HP) ⁹	711+10/513R	126.6'	TRANSITIONAL/ APPROACH	111.8'	14.8'	TO REMAIN	N/A
38	TERRAIN (HP)	524+50/2031L	456.9'	APPROACH	355.6'	101.3'	TO REMAIN	N/A
39	TERRAIN (HP)	593+68/7973L	617.0'	HORIZ./CONICAL	246.8'	370.2'	TO REMAIN	N/A
40	TERRAIN (HP)	748+43/7090L	337.0'	HORIZONTAL	246.8'	90.2'	TO REMAIN	N/A
116	TERRAIN (HP)	753+58/13302L	469.4'	CONICAL	446.8'	22.6'	TO REMAIN	N/A
117	TERRAIN (HP)	763+63/12930L	455.7'	CONICAL	446.8'	8.9'	TO REMAIN	N/A

LEGEND

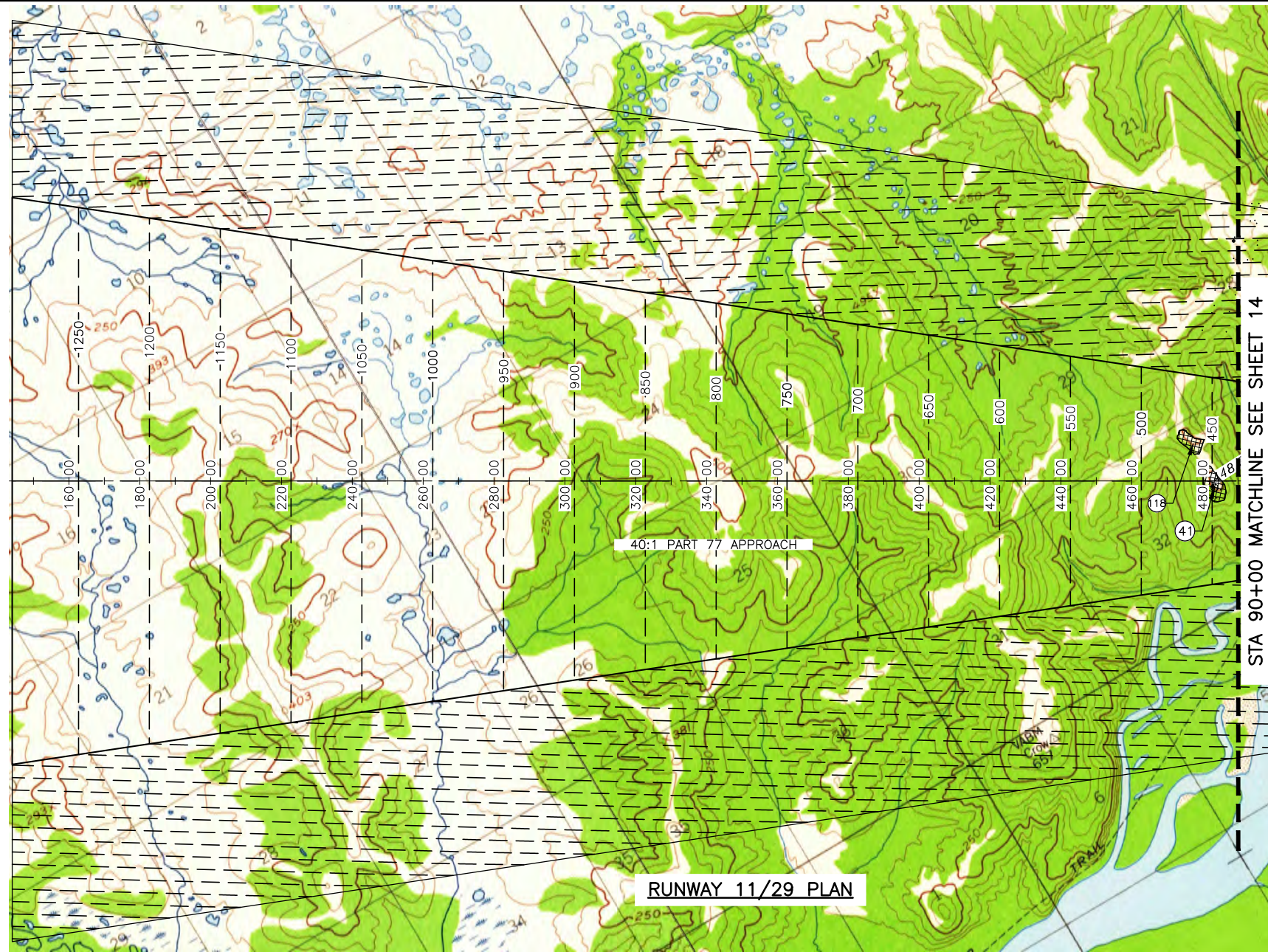
FAR PART 77 TERRAIN PENETRATIONS
 FAR PART 77 TREE PENETRATIONS
 OBSTRUCTION, SEE PLAN VIEW

- #### NOTES:
- (HP) = POINT OF HIGHEST PENETRATION.
 - PART 77 APPROACH SURFACE EXTENDS AT 50:1 FOR INNER 10,000' AND 40:1 FOR OUTER 40,000'.
 - PRIMARY SURFACE WIDTH IS 1,000'.
 - THERE ARE NO KNOWN HEIGHT RESTRICTIONS.
 - UTILITY POLE PENETRATIONS EXTEND FROM STA 658+27/645L TO STA 692+13/633L.
 - PENETRATIONS EXTEND FROM STA 689+69/509L TO STA 702+01/506L.
 - ROAD+15' PENETRATIONS EXTEND FROM STA 691+94/560L TO STA 702+91/557L.
 - PENETRATIONS EXTEND FROM STA 667+91/432R TO STA 674+93/432R.
 - UTILITY POLE PENETRATIONS EXTEND FROM STA 706+79/627R TO STA 711+11/497R.
 - UTILITY POLE PENETRATIONS EXTEND FROM STA 642+91/579R TO STA 654+95/598R.
 - ROAD+15' PENETRATIONS EXTEND FROM STA 658+06/534R TO STA 701+36/223R.
 - SEE SHEET 15 FOR PLAN AND PROFILE OF OUTER PORTION OF AIRSPACE.
 - REFER TO INNER PORTION OF APPROACH SURFACE (SHEETS 8-11) FOR CLOSE IN OBSTRUCTIONS.
 - OBSTRUCTION DATA FROM AS-BUILT SURVEY PERFORMED BY R&M CONSULTANTS, INC. DECEMBER 2020 AND AS-BUILT AERIAL MAPPING PERFORMED BY KODIAK MAPPING INC. USING IMAGERY COLLECTED AUGUST 2020.
 - USGS QUAD RUSSIAN MISSION (C-2), ALASKA 1970



STATE OF ALASKA DEPARTMENT OF TRANSPORTATION AND PUBLIC FACILITIES CENTRAL REGION		
ANIAK AIRPORT ANIAK, ALASKA AIRPORT LAYOUT PLAN		DATE: 1/24/2023
AIRPORT AIRSPACE (FAR PART 77) (1 OF 2)		SHEET: 14 OF 17
BY MM	DATE 1/24/2023	REVISION AS-BUILT UPDATE, ANI RW SHIFT (Z528070000)

Date Plotted: 1/24/2023, 2:53 PM
 Layout Name: ALP-17
 File Name: Z:\projects\2380_06 Aniak Airport Aero Survey\GIS\1\ACAD\ALP-ANI-14-B-AIRSPACE_PART17.dwg
 Designed By: MM
 Drawn By: AVA
 Checked By: CJB



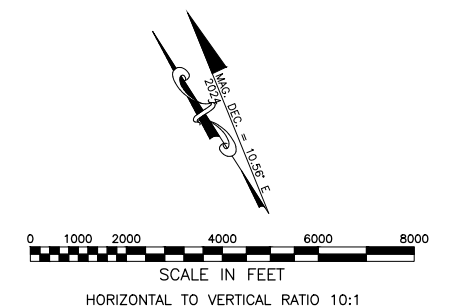
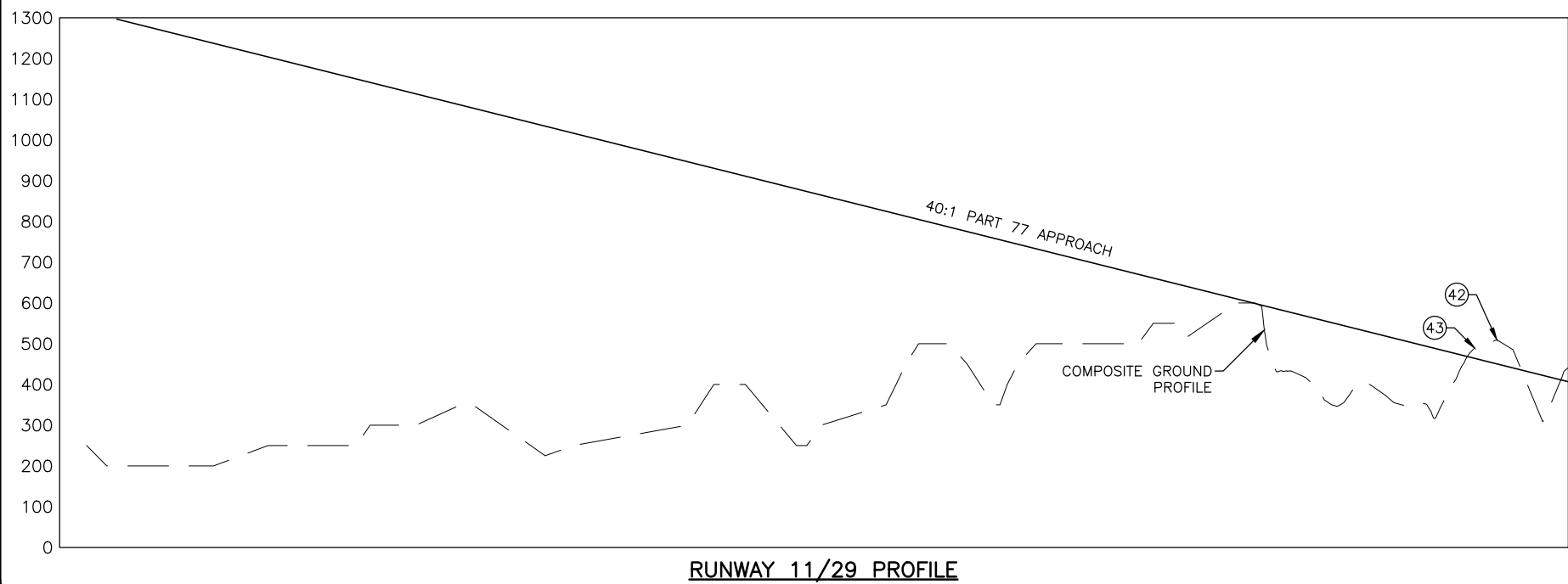
PART 77 AIRSPACE OBSTRUCTIONS TABLE (OUTER PORTION RW 11)								
ID#	DESCRIPTION	STATION/OFFSET	ELEVATION	SURFACE PENETRATED	SURFACE ELEVATION	AMOUNT PENETRATED	DISPOSITION	STAGE TO CORRECT
41	TERRAIN (HP)	483+39/189R	529.8'	APPROACH	448.3'	81.5'	TO REMAIN	N/A
118	TERRAIN (HP)	477+32/1030L	489.7'	APPROACH	463.5'	26.2'	TO REMAIN	N/A

NOTES:

- (HP) = POINT OF HIGHEST PENETRATION.
- PART 77 APPROACH SURFACE EXTENDS AT 50:1 FOR INNER 10,000' AND 40:1 FOR OUTER 40,000'.
- PRIMARY SURFACE WIDTH IS 1,000'.
- THERE ARE NO KNOWN HEIGHT RESTRICTIONS.
- SEE SHEET 14 FOR PLAN AND PROFILE OF INNER PORTION OF AIRSPACE.
- REFER TO INNER PORTION OF APPROACH SURFACE (SHEETS 8-11) FOR CLOSE IN OBSTRUCTIONS.
- OBSTRUCTION DATA FROM AS-BUILT SURVEY PERFORMED BY R&M CONSULTANTS, INC. DECEMBER 2020 AND AS-BUILT AERIAL MAPPING PERFORMED BY KODIAK MAPPING INC. USING IMAGERY COLLECTED AUGUST 2020.
- USGS QUAD RUSSIAN MISSION (C-2), ALASKA 1970

LEGEND

- FAR PART 77 TERRAIN PENETRATIONS
- OBSTRUCTION, SEE PLAN VIEW

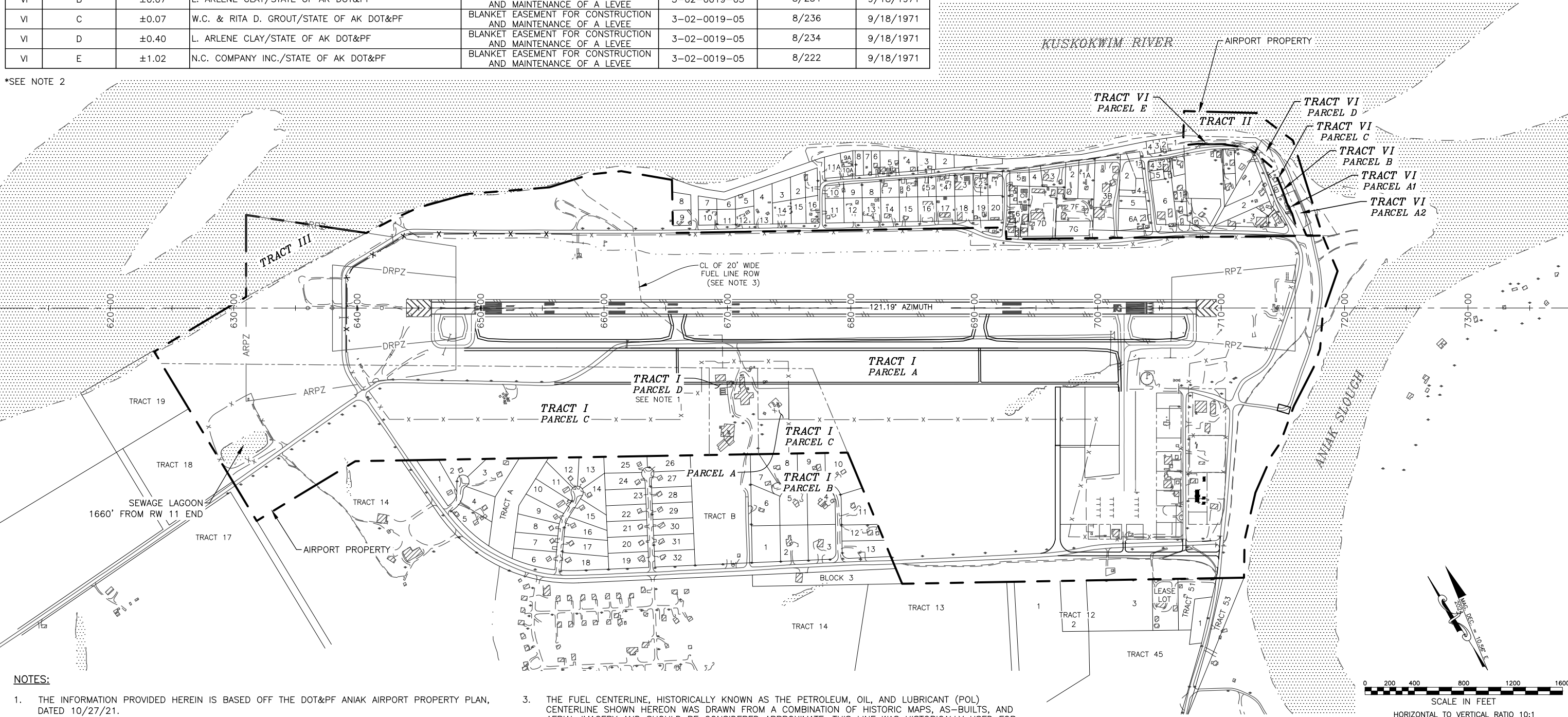


STATE OF ALASKA DEPARTMENT OF TRANSPORTATION AND PUBLIC FACILITIES CENTRAL REGION		DATE: 1/24/2023
		SHEET: 15 OF 17
ANIAK AIRPORT ANIAK, ALASKA AIRPORT LAYOUT PLAN		AIRPORT AIRSPACE (FAR PART 77) (2 OF 2)
BY: AVA DATE: 1/24/2023	REVISION: AS-BUILT UPDATE, ANI RW SHIFT (Z528070000)	

PROPERTY STATUS

TRACT	PARCEL	ACREAGE	GRANTOR/GRANTEE	INTEREST	AIP #	INSTRUMENT NO.	ACQ DATE
I	A, B, C, D	±506.93	UNITED STATES OF AMERICA/STATE OF AK	FEE SURFACE	3-02-0019-04	2/135*	1/10/1966
II	-	±6.62	STATE OF AK DNR/STATE OF AK DOT&PF	ILMA	3-02-0019-05	27/505	3/27/1996
III	-	±7.377	STATE OF AK DNR/STATE OF AK DOT&PF	ILMA	3-02-0019-010	2017-000047-0	5/8/2017
VI	A1	±0.27	JOSEPH L. & DELORES J. MATTER/STATE OF AK DOT&PF	BLANKET EASEMENT FOR CONSTRUCTION AND MAINTENANCE OF A LEVEE	3-02-0019-05	8/238	9/18/1971
VI	A2	±0.34	JOSEPH L. & DELORES J. MATTER/STATE OF AK DOT&PF	BLANKET EASEMENT FOR CONSTRUCTION AND MAINTENANCE OF A LEVEE	3-02-0019-05	27/537	4/11/1996
VI	B	±0.07	L. ARLENE CLAY/STATE OF AK DOT&PF	BLANKET EASEMENT FOR CONSTRUCTION AND MAINTENANCE OF A LEVEE	3-02-0019-05	8/234	9/18/1971
VI	C	±0.07	W.C. & RITA D. GROUT/STATE OF AK DOT&PF	BLANKET EASEMENT FOR CONSTRUCTION AND MAINTENANCE OF A LEVEE	3-02-0019-05	8/236	9/18/1971
VI	D	±0.40	L. ARLENE CLAY/STATE OF AK DOT&PF	BLANKET EASEMENT FOR CONSTRUCTION AND MAINTENANCE OF A LEVEE	3-02-0019-05	8/234	9/18/1971
VI	E	±1.02	N.C. COMPANY INC./STATE OF AK DOT&PF	BLANKET EASEMENT FOR CONSTRUCTION AND MAINTENANCE OF A LEVEE	3-02-0019-05	8/222	9/18/1971

*SEE NOTE 2



NOTES:

- THE INFORMATION PROVIDED HEREIN IS BASED OFF THE DOT&PF ANIAK AIRPORT PROPERTY PLAN, DATED 10/27/21.
- USE OF CERTAIN AREAS IS RESERVED BY DEED (BOOK 2, PAGE 135). LAND OCCUPANCY DRAWINGS SHOULD BE CHECKED FOR DETAILS OF THESE AREAS.

TRACT I PARCEL B, WAS CONVEYED TO THE CITY OF ANIAK BY QUITCLAIM DEED IN BOOK 11, PAGE 177. IN BOOK 11, PAGE 177 THERE IS A SPECIAL CONDITION THAT THE LANDS SHALL REVERT BACK TO THE STATE OF ALASKA IF USED FOR OTHER THAN "RESIDENTIAL HOUSING AND RELATED PUBLIC SERVICE FACILITIES." TRACT I PARCEL B IS NOW ANIAK RESIDENTIAL SUBDIVISION NO. 1, PLAT 80-2. IN THE DECLARATION OF RESTRICTIONS IN BOOK 12, PAGE 720 FOR SAID PLAT, THERE IS A LAND USE RESTRICTION STATING THAT "FAMILY UNITS NOT TO EXCEED TWO STORIES IN HEIGHT."

TRACT I PARCEL C IS APPROXIMATELY 94.57 ACRES AND IS DESIGNATED FOR NON-AVIATION USE.

TRACT I PARCEL D (ADA-04863) IS OWNED BY DOT&PF, BUT IS CURRENTLY LEASED TO THE ALASKA DEPARTMENT OF EDUCATION.
- THE FUEL CENTERLINE, HISTORICALLY KNOWN AS THE PETROLEUM, OIL, AND LUBRICANT (POL) CENTERLINE SHOWN HEREON WAS DRAWN FROM A COMBINATION OF HISTORIC MAPS, AS-BUILTS, AND AERIAL IMAGERY AND SHOULD BE CONSIDERED APPROXIMATE. THIS LINE WAS HISTORICALLY USED FOR THE US AIR FORCE WHITE ALICE COMMUNICATION SITE (WACS), BUT IS NOW BEING USED BY THE KUSKOKWIM SCHOOL DISTRICT UNDER ADA-04863.
- ALL DOCUMENTS AND PLATS SHOWN HEREON ARE RECORDED IN THE KUSKOKWIM RECORDING DISTRICT, UNLESS NOTED OTHERWISE.

BY	DATE	REVISION
AVA	1/24/2023	AS-BUILT UPDATE, ANI RW SHIFT (Z528070000)
MM	1/24/2017	TRACT III REVISED, TRACTS IV & V REMOVED

STATE OF ALASKA
DEPARTMENT OF TRANSPORTATION
AND PUBLIC FACILITIES
CENTRAL REGION

ANIAK AIRPORT
 ANIAK, ALASKA
 AIRPORT LAYOUT PLAN

PROPERTY MAP

DATE: 1/24/2023
 SHEET: 16 OF 17

Date Plotted: 1/24/2023, 2:54 PM
 Layout Name: ALP-18
 File Name: Z:\proj\sect\2380_06\Aniak Airport Aero Survey\G11\ACAD\ALP-ANI-18-AIRPORT PROPERTY.dwg

Date Plotted: 1/24/2023 2:54 PM
 Layout Name: ALP-19
 File Name: Z:\projects\2380_06 Aniak Airport Aero Survey\G11\ACAD\ALP-ANI-17-LAND USE.dwg

BASEMAP LEGEND

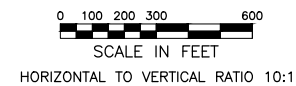
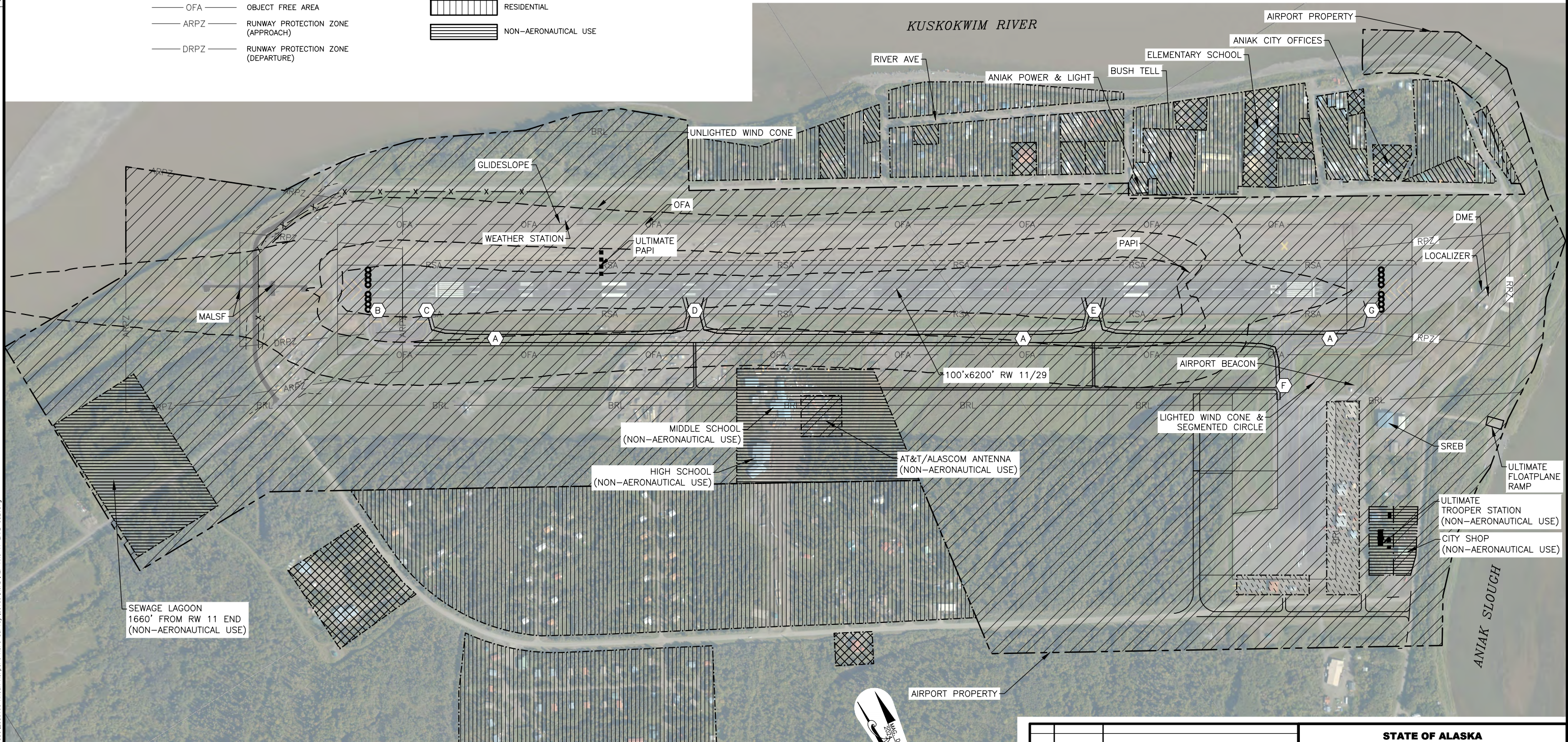
---	AIRPORT BOUNDARY
- - -	LAND USE BOUNDARY
- - - - -	NOISE CONTOUR
—BRL—	BUILDING RESTRICTION LINE
—RSA—	RUNWAY SAFETY AREA
—OFZ—	OBSTACLE FREE ZONE
—OFA—	OBJECT FREE AREA
—ARPZ—	RUNWAY PROTECTION ZONE (APPROACH)
—DRPZ—	RUNWAY PROTECTION ZONE (DEPARTURE)

LAND USE LEGEND

[Diagonal lines /]	PUBLIC AIRFIELD
[Diagonal lines \]	COMMERCIAL (AERONAUTICAL USE)
[Diagonal lines /]	COMMERCIAL
[Cross-hatch]	PUBLIC
[Vertical lines]	RESIDENTIAL
[Horizontal lines]	NON-AERONAUTICAL USE

NOTE:

1. (X) TAXIWAY IDENTIFIER, SEE AIRPORT DATA SHEET.
2. NON-AERONAUTICAL USES ON AIRPORT ARE CURRENTLY UNDER REVIEW BY DOT AVIATION LEASING IN PREPARATION FOR FAA APPROVAL.



NO.	DATE	REVISION

STATE OF ALASKA
DEPARTMENT OF TRANSPORTATION
AND PUBLIC FACILITIES
CENTRAL REGION

ANIAK AIRPORT ANIAK, ALASKA AIRPORT LAYOUT PLAN LAND USE	DATE: 1/24/2023
	SHEET: 17 OF 17

BY: AVA 1/24/2023 AS-BUILT UPDATE, ANI RW SHIFT (Z528070000)
 DATE: REVISION