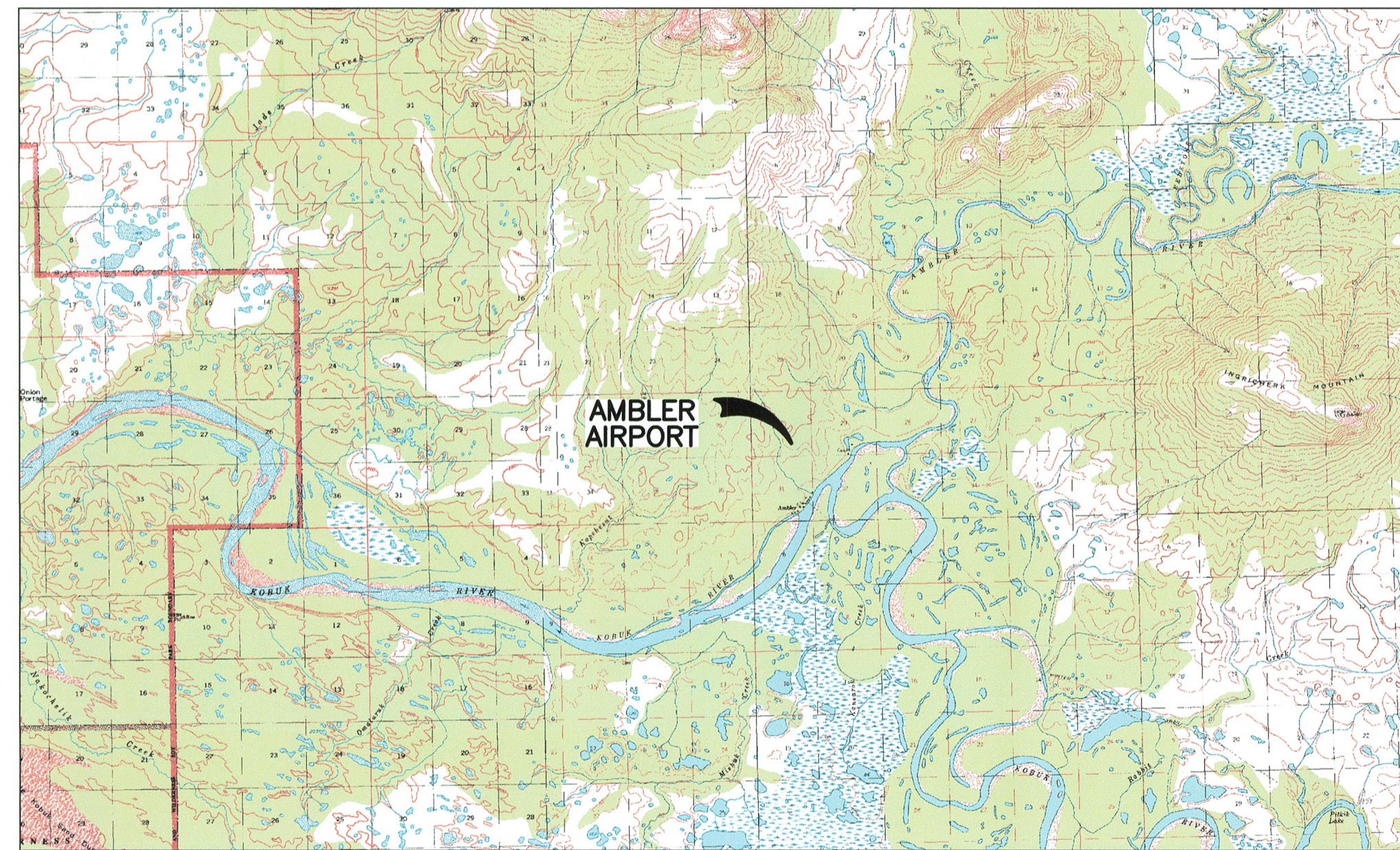


LOCATION MAP

AMBLER AIRPORT AIRPORT LAYOUT PLAN AMBLER, ALASKA



AMBLER, ALASKA
USGS AMBLER RIVER
(A-4 & A-5) SEC 30
T20N, R5E, KRM

VICINITY MAP

SCALE: 1" = 1 MILE
0 1

LEGEND		
	EXISTING	ULTIMATE
PROPERTY LINE	---	---
BUILDING RESTRICTION LINE (B.R.L.)	---	---
DEVELOPMENT	---	---
WIND CONE & SEGMENTED CIRCLE		
WIND CONE ONLY		SAME
BUILDINGS		SAME
ROADWAYS		SAME
THRESHOLD LIGHTS		SAME
RUNWAY OBJECT FREE AREA (OFA)		SAME
RUNWAY PROTECTION ZONE (RPZ)		SAME
RUNWAY SAFETY AREA (RSA)		SAME
TERRAIN PENETRATION		SAME
AIRPORT REFERENCE POINT		TREELINE
ROTATING BEACON		AWOS CLEAR ZONE
ANTENNAE/TOWERS		

SHEET INDEX	
SHEET NO.	DESCRIPTION
1	COVER
2	AIRPORT DATA
3	EXISTING AIRPORT LAYOUT PLAN
4	ULTIMATE AIRPORT LAYOUT PLAN
5	TERMINAL PLAN
6	EXISTING/ULTIMATE INNER PORTION OF APPROACH SURFACE
7	EXISTING & ULTIMATE APPROACH PROFILES
8	AIRPORT AIRSPACE
9	AIRPORT PROPERTY MAP
10	AIRPORT PROPERTY STATUS

DESIGN	REH
DRAWN	REH
CHECKED	CML

STATE OF ALASKA
DEPARTMENT OF TRANSPORTATION AND PUBLIC FACILITIES
NORTHERN REGION-AVIATION

APPROVED:
ALBERT M.L. BECK, P.E. DATE 5/13/19 PROJECT DELIVERY LEAD

AS BUILT AIRPORT LAYOUT PLAN CONDITIONAL APPROVAL
SUBJECT TO ALP APPROVAL LETTER DATED 10/01/2013
FAA AIRSPACE REVIEW NUMBER: #2013-AAL-300-NRA

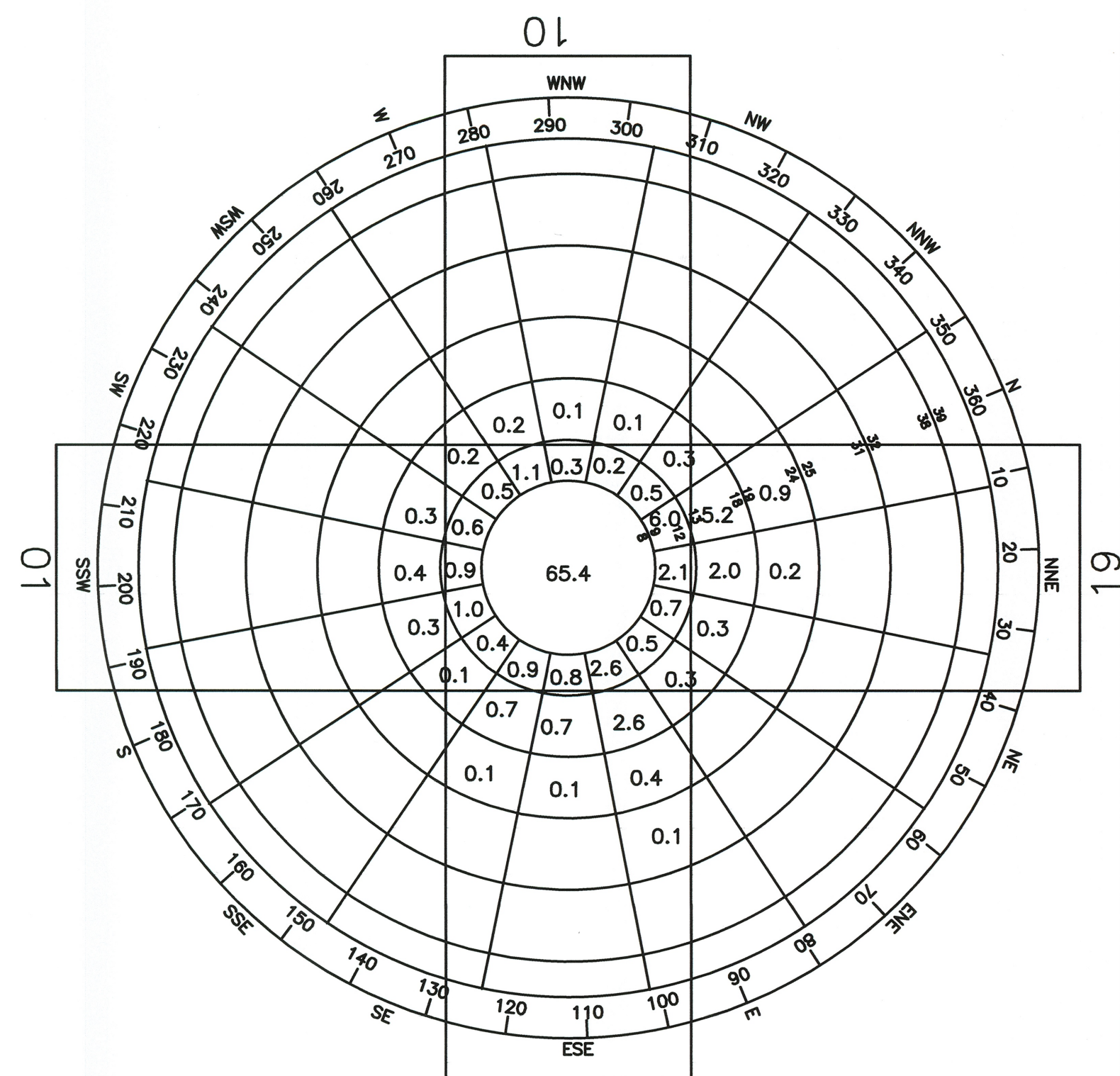
AS-BUILT

DATE 6/28/19
FAA, AIRPORTS DIVISION ALASKAN REGION, AAL- 601

MBI	3/19	AS-BUILTS
BY	DATE	REVISIONS

AMBLER AIRPORT
AMBLER, ALASKA
COVER

SHEET
1 OF
10



28
WIND ROSE
13 Knots

WIND DATA

PERCENT WIND COVERAGE
 RUNWAY 01-19: 96.6%
 RUNWAY 10-28: 97.0%
 COMBINED COVERAGE: 97.6%
 WIND DATA PERIOD: 1982-1984
 WIND DATA SOURCE: AEIDC

NOTE: THE MAIN RUNWAY DOES NOT ALWAYS PROVIDE 95% WIND COVERAGE DURING THE SPRING AND FALL.

AFM AIRPORT CONTROL (PACS AND SACS)					
MONUMENT	AK83 SPZ6 NORTHING	AK83 SPZ6 EASTING	ELEVATION	LATITUDE	LONGITUDE
AFM B (SACS)	4789772.36	1661197.99	255.25	67°06'15.30227"N	157°51'14.93235"W
AFM D (PACS)	4791286.84	1661037.20	278.06	67°06'30.20844"N	157°51'18.90577"W
AFM E (SACS)	4791931.60	1659465.63	293.52	67°06'36.58753"N	157°51'58.58538"W

AIRPORT DATA			
ITEM	EXISTING	ULTIMATE	
NATIONAL AIRPORT IDENTIFIER	AFM	SAME	
AIRPORT IDENTIFIER ICAO/U.S.	PAFM	SAME	
AIRPORT ELEVATION (NAVD88)	292.57'	292.57'	
AIRPORT REFERENCE POINT (ARP) - NAD 83	LAT. 67°06'22.32"N	67°06'22.32"N	
	LONG. 157°51'25.83"W	157°51'25.83"W	
MEAN MAX. TEMPERATURE, HOTTEST MONTH (JULY)	68° F	N/A	
AIRPORT AND TERMINAL NAVIGATION AIDS	DME, PAPI	DME, PAPI	
	NDB, BEACON	NDB, BEACON	
WEATHER	AWOS	SAME	
AIRPORT REFERENCE CODE (ARC)	B-II	SAME	
AIRPORT LIGHTING	MIRL	SAME	
TAXIWAY LIGHTING	MITL	SAME	
MAGNETIC DECLINATION, 2017, CHANGING 0'25"W/YR	13°55'E	SAME	
NPIAS SERVICE LEVEL (P, CS, RL, GA)	GA	SAME	

- THE VERTICAL DATUM IS GPS DERIVED NAVD88 USING GEOID12B.
- THE HORIZONTAL COORDINATE SYSTEM IS IN NAD83 (2001) ALASKA STATE PLANE ZONE 6 U.S. SURVEY FEET.
- NO THRESHOLD SITING SURFACE PENETRATIONS

RUNWAY DATA				
ITEM	EXISTING	ULTIMATE	EXISTING	ULTIMATE
RUNWAY END NUMBERS	01-19	SAME	10-28	SAME
RUNWAY DESIGN CODE (RDC)	B-II-5000	B-II-4000	A-I-VIS	SAME
FAR PART 77 CATEGORY	NON-PRECISION INSTRUMENT	NON-PRECISION INSTRUMENT	VISUAL	VISUAL
IAP SURVEY REQUIRED	REQ'D - D	REQ'D - D	NONE	NONE
IAP SURVEY SOURCE	REQ'D - D	REQ'D - D	NONE	NONE
RUNWAY SURFACE	GRAVEL	ASPHALT	GRAVEL	GRAVEL
PAVEMENT STRENGTH	N/A	104,000	N/A	N/A
TOUCHDOWN ZONE ELEVATION (TDZE)	RUNWAY 19	269.2'	N/A	N/A
	RUNWAY 01	268.0'	N/A	N/A
	RUNWAY 10	N/A	N/A	292.6'
	RUNWAY 28	N/A	N/A	292.6'
DEPARTURE SURFACE	N/A	N/A	N/A	N/A
EFFECTIVE GRADE	0.50%	SAME	1.06%	SAME
% WIND COVERAGE	96.6% (13 KNOTS)	SAME	92% (10.5 KNOTS)	SAME
APPROACH	SAME	3:1	20:1	SAME
VISIBILITY MINIMUMS	≥ 1 MILE - 01	≥ 3/4 MILE - 01	≥ 1 MILE - 10	SAME
	≥ 1 MILE - 19	≥ 3/4 MILE - 19	≥ 1 MILE - 28	SAME
RUNWAY MARKING	NONE	NON-PRECISION	NONE	SAME
RUNWAY LIGHTING	MIRL	SAME	MIRL	SAME
NAVIGATION APPROACH AIDS	PAPIs	PAPIs	NONE	NONE
RUNWAY DIMENSIONS	4,000' X 75'	SAME	2400' X 60'	SAME
RUNWAY SAFETY AREA (RSA)	4,600' X 150'	SAME	2880' X 120'	SAME
- WIDTH	150'	SAME	120'	SAME
- LENGTH BEYOND RUNWAY END	300'	SAME	240'	SAME
RUNWAY OBJECT FREE AREA (OFA)				
- WIDTH	200' LT/250' RT	500'	250'	SAME
- LENGTH BEYOND RUNWAY END	300'	SAME	240'	SAME
RUNWAY OBSTACLE FREE ZONE (OFZ)				
- WIDTH	400'	SAME	250'	SAME
- LENGTH BEYOND RUNWAY END	200'	SAME	200'	SAME
RUNWAY PROTECTION ZONE (RPZ)	RUNWAY 19	1,700' x 1,510' x 1,000'	SAME	N/A
	RUNWAY 01	1,700' x 1,510' x 1,000'	SAME	N/A
	RUNWAY 10	N/A	N/A	1,000' x 700' x 500'
	RUNWAY 28	N/A	N/A	1,000' x 700' x 500'
GEODETTIC POSITIONS (NAD 83)				
THRESHOLD 19	LAT. 67°06'36.18"N	SAME	N/A	N/A
	LONG. 157°50'59.76"W	SAME	N/A	N/A
THRESHOLD 01	LAT. 67°05'59.85"N	SAME	N/A	N/A
	LONG. 157°51'38.57"W	SAME	N/A	N/A
THRESHOLD 10	LAT. N/A	N/A	67°06'34.01"N	SAME
	LONG. N/A	N/A	157°52'04.93"W	SAME
THRESHOLD 28	LAT. N/A	N/A	67°06'24.95"N	SAME
	LONG. N/A	N/A	157°51'08.93"W	SAME
T/W LENGTH AND WIDTH	220' x 35'	3,284' x 50'	NONE	NONE
T/W SAFETY AREA WIDTH	79'	118'	NONE	NONE
T/W OBJECT FREE AREA	131'	186'	NONE	NONE

NON-STANDARD CONDITIONS			
ITEM	STANDARD	EXISTING	ULTIMATE
OUTBOARD THRESHOLD LIGHTS R/W 01	0' OFFSET	10' OFFSET	0' OFFSET

DESIGN REH
 DRAWN REH
 CHECKED CML

STATE OF ALASKA
 DEPARTMENT OF TRANSPORTATION AND PUBLIC FACILITIES
 NORTHERN REGION-AVIATION

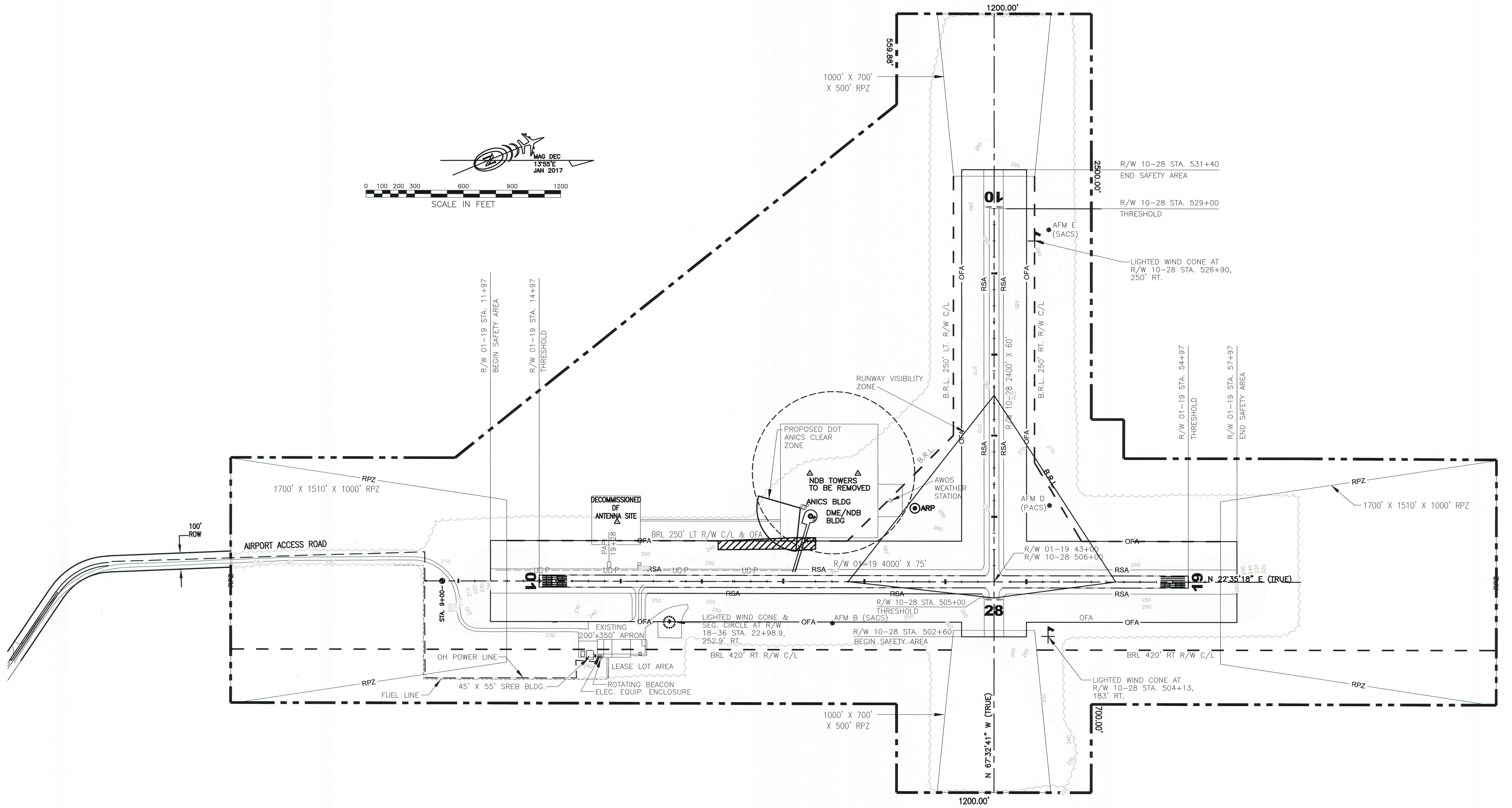
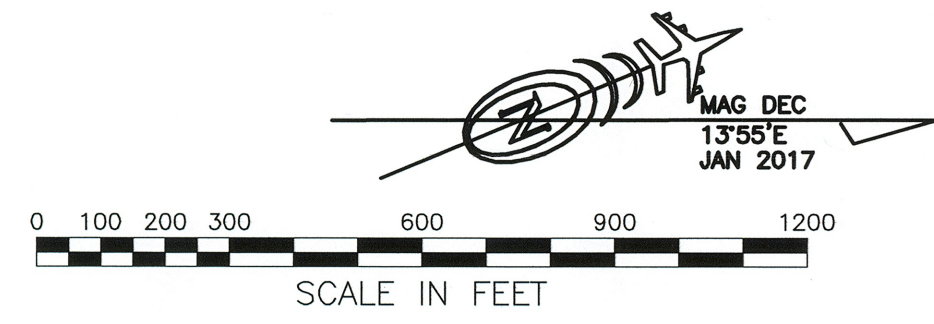
APPROVED: *Albert M.L. Beck* DATE 5/13/19
 ALBERT M.L. BECK, P.E. PROJECT DELIVERY LEAD

BY	DATE	REVISIONS	FAA

BY	DATE	REVISIONS	FAA
MBI	3/19	AS-BUILTS	

AMBLER AIRPORT
 AMBLER, ALASKA
 AIRPORT DATA

SHEET
 2 OF 10



DESIGN	REH
DRAWN	REH
CHECKED	CML

STATE OF ALASKA
DEPARTMENT OF TRANSPORTATION AND PUBLIC FACILITIES
NORTHERN REGION-AVIATION

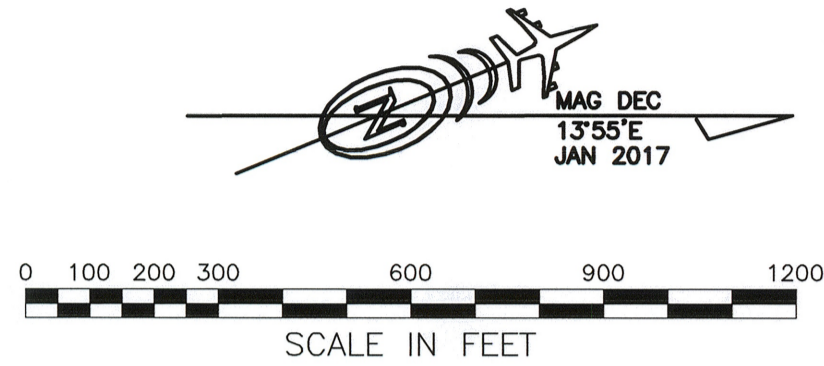
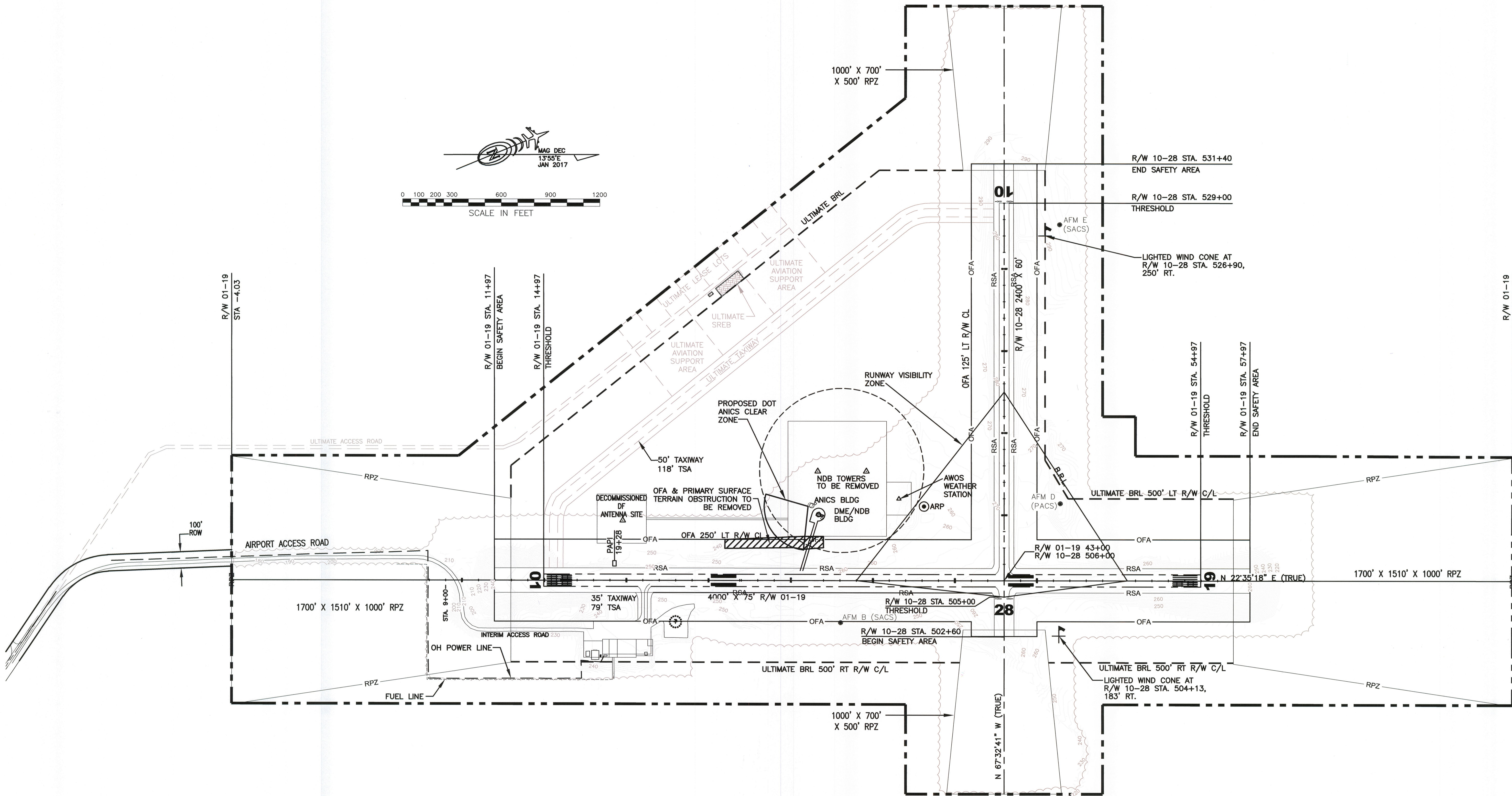
APPROVED: Albert M.L. Beck DATE 5/13/19
ALBERT M.L. BECK, P.E. PROJECT DELIVERY LEAD

BY	DATE	REVISIONS	FAA

MBI	DATE	AS-BUILTS	FAA

AMBLER AIRPORT
AMBLER, ALASKA
EXISTING AIRPORT LAYOUT PLAN

SHEET
3 OF
10



DESIGN REH
 DRAWN REH
 CHECKED CML

STATE OF ALASKA
 DEPARTMENT OF TRANSPORTATION AND PUBLIC FACILITIES
 NORTHERN REGION-AVIATION

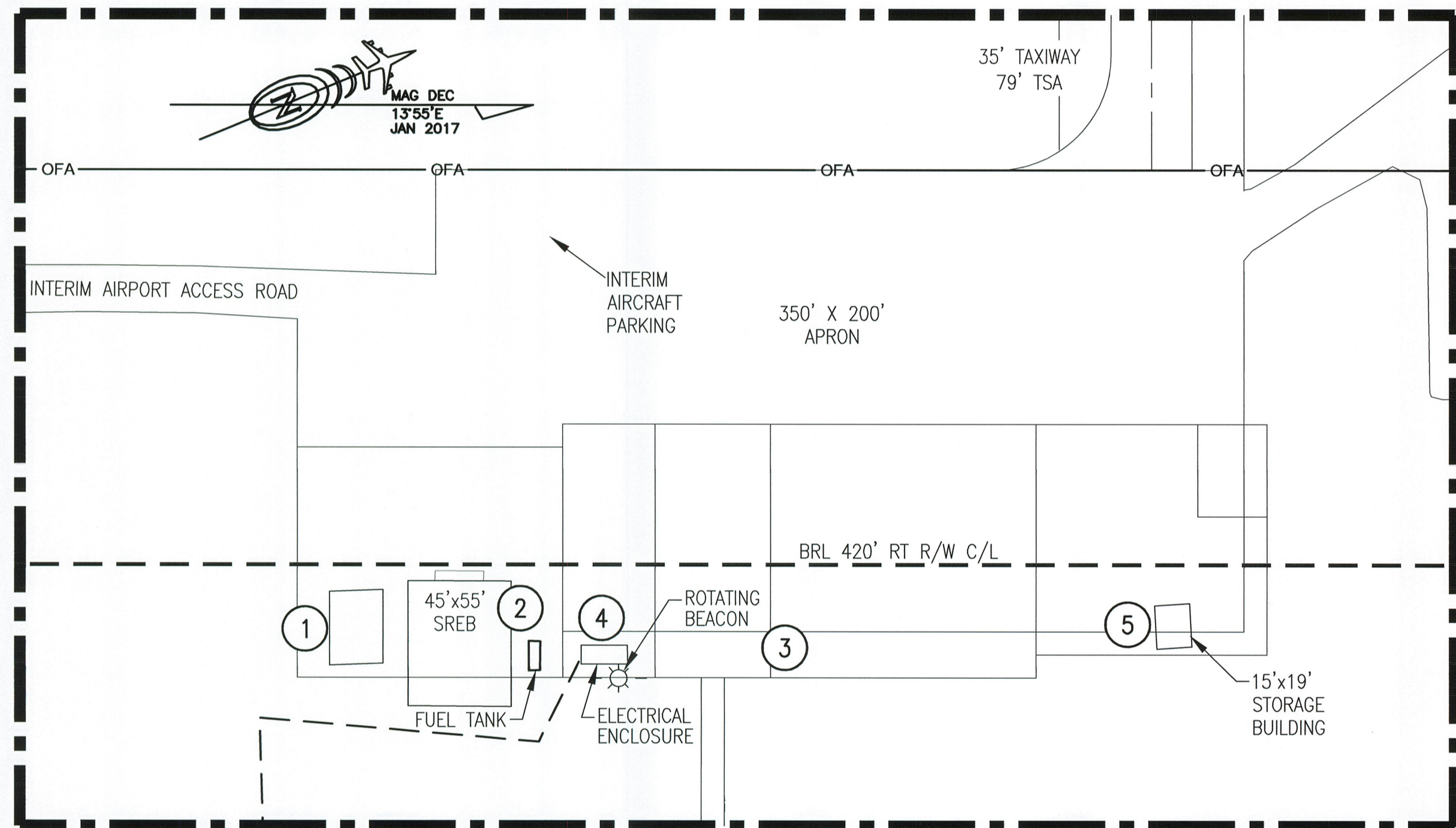
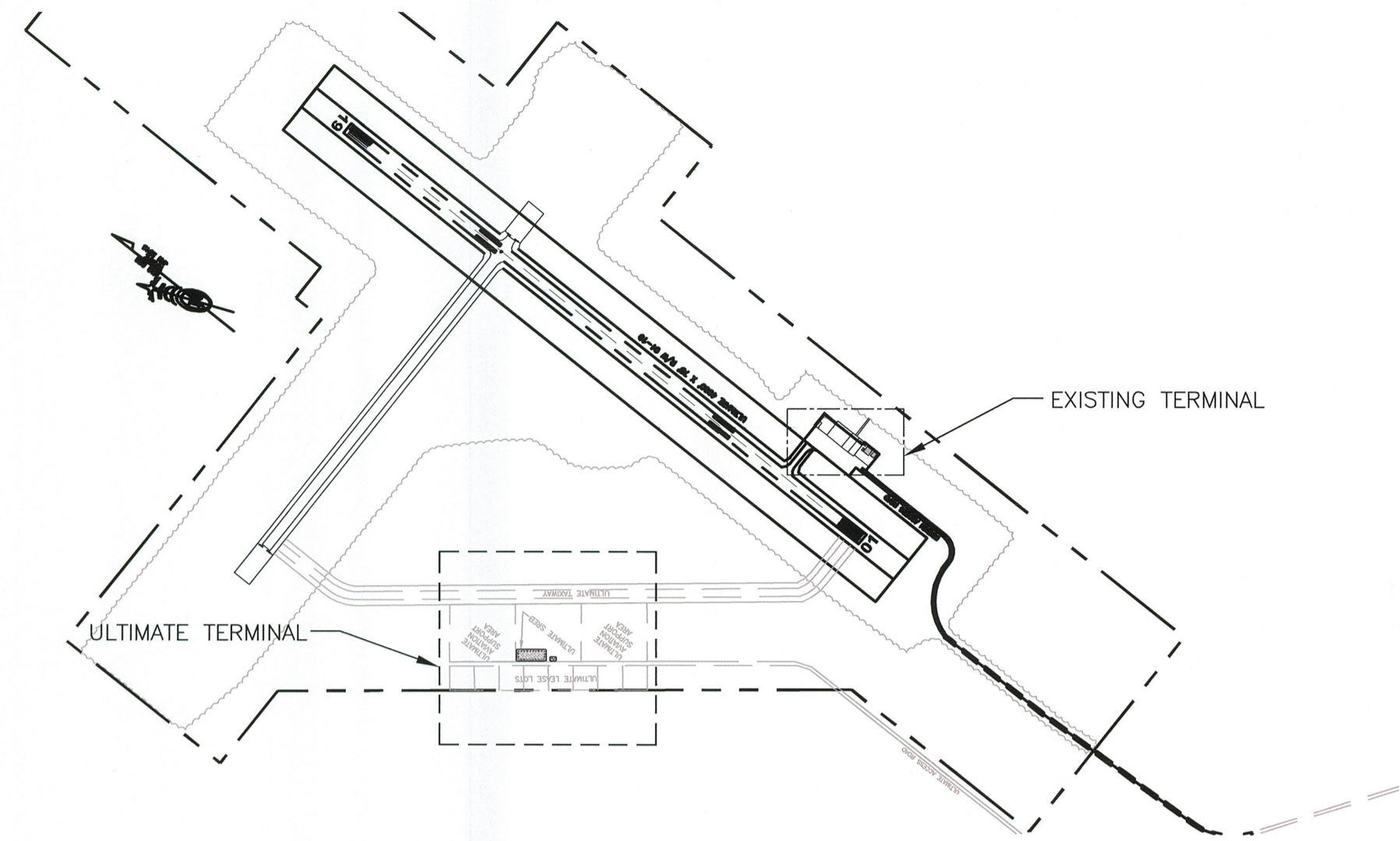
APPROVED: Albert M.L. Beck DATE 5/13/19
 ALBERT M.L. BECK, P.E. PROJECT DELIVERY LEAD

BY	DATE	REVISIONS	FAA

BY	DATE	AS-BUILTS	FAA

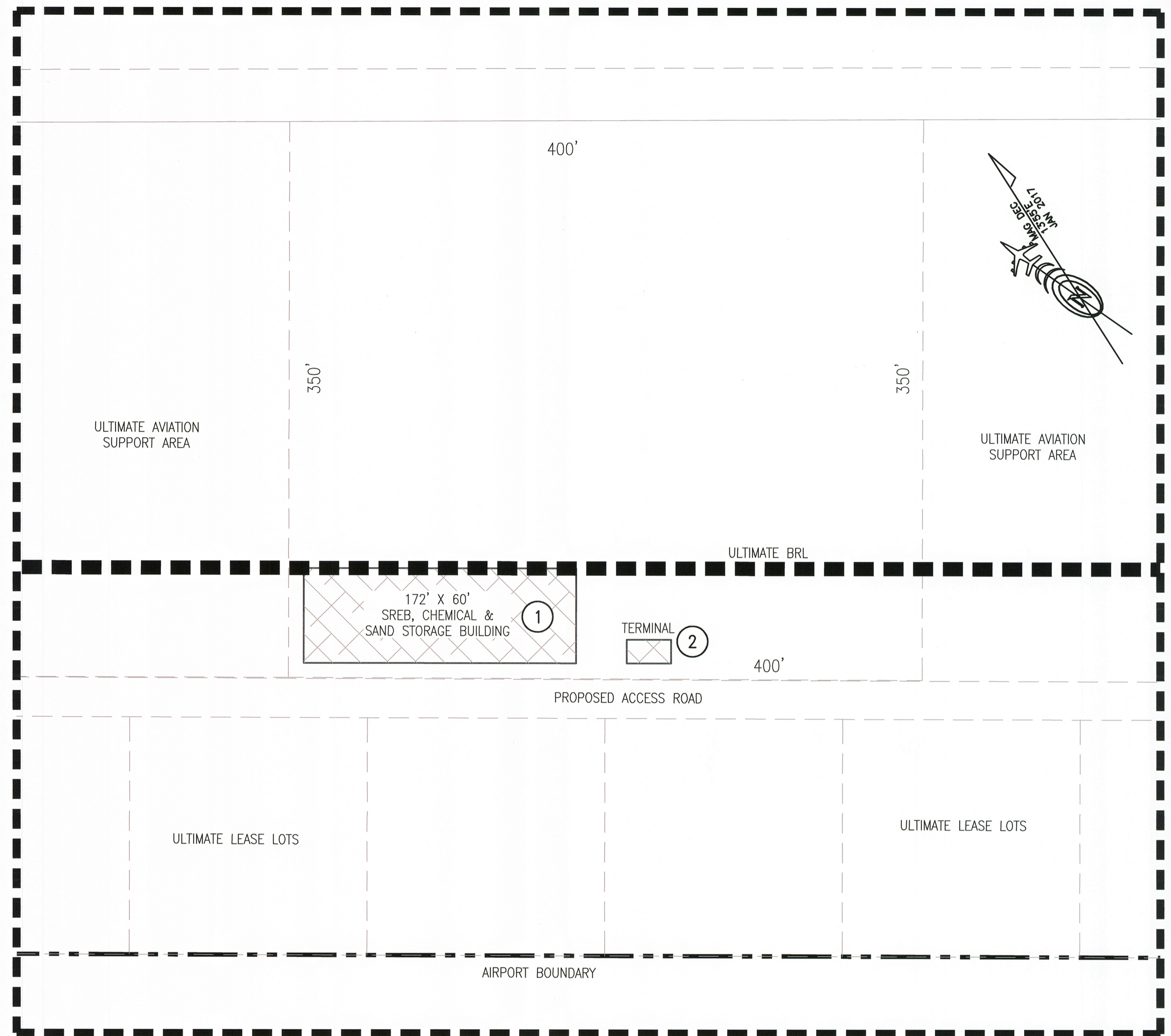
AMBER AIRPORT
 AMBLER, ALASKA
 ULTIMATE AIRPORT LAYOUT PLAN

SHEET
 4 OF 10



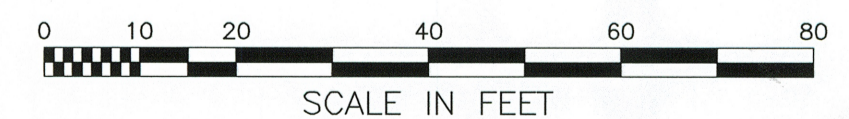
EXISTING AND INTERIM TERMINAL LAYOUT

BUILDING DATA TABLE					
ID	DESCRIPTION OCCUPANT - STRUCTURE TYPE	BLDG. STATION/ OFFSET RT R/W 1 CL	TOP ELEV (MSL) STRUCTURE	OBSTRUCT	
				EXISTING	ULTIMATE
1	AKDOT&PF - COLD STORAGE BUILDING	17+66, 432 FT	258.85 FT	N	N
2	AKDOT&PF - SREB	18+10, 428 FT	271.32 FT	N	N
3	AKDOT&PF - ROTATING BEACON	18+79, 470 FT	271.32 FT	N	N
4	SHARED DOT&PF AND FAA ELECTRICAL EQUIPMENT ENCLOSURE	18+73, 456 FT	253.18 FT	N	N
5	STORAGE BUILDING	21+19, 438 FT	255.82 FT	N	N
6					
7					
8					
9					
10					
11					



ULTIMATE TERMINAL LAYOUT

BUILDING DATA TABLE					
ID	DESCRIPTION OCCUPANT - STRUCTURE TYPE	BLDG. STATION/ OFFSET RT R/W 1 CL	TOP ELEV (MSL) STRUCTURE	OBSTRUCT	
				EXISTING	ULTIMATE
1	AKDOT&PF - SREB & CHEMICAL STORAGE BUILDING	26+64, 1798' FT	264 FT	N	N
2	AKDOT&PF - TERMINAL	25+33, 1751' FT	257 FT	N	N
3					
4					
5					
6					
7					
8					
9					
10					
11					



DESIGN REH

DRAWN REH

CHECKED CML

STATE OF ALASKA
DEPARTMENT OF TRANSPORTATION AND PUBLIC FACILITIES
NORTHERN REGION-AVIATION

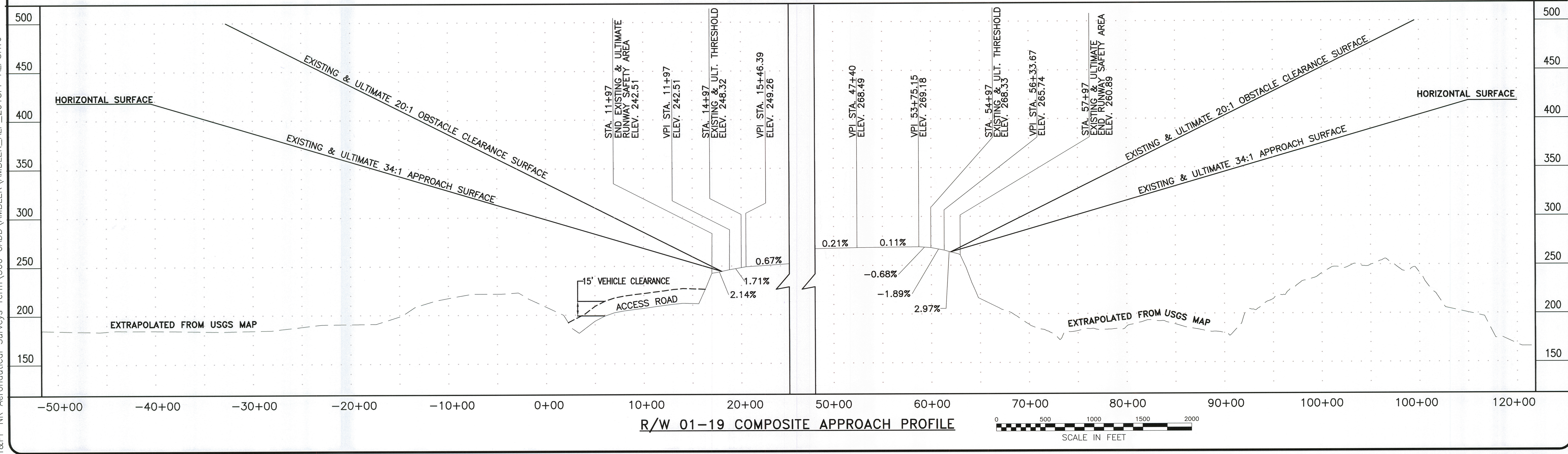
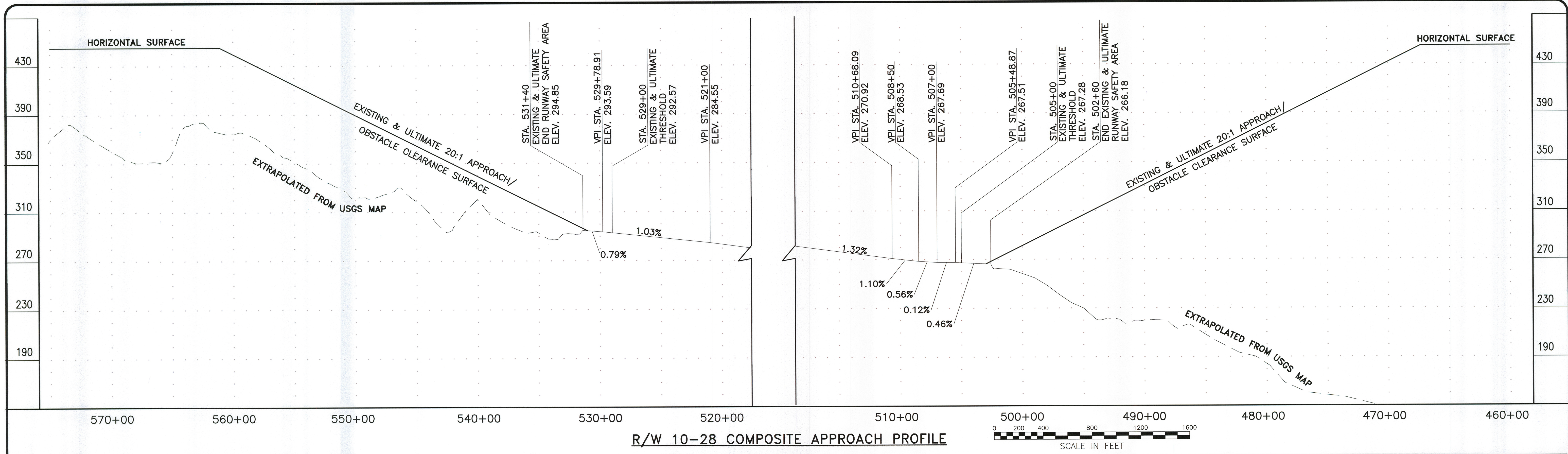
APPROVED: *Albert M.L. Beck* DATE 5/13/19
ALBERT M.L. BECK, P.E. PROJECT DELIVERY LEAD

BY	DATE	REVISIONS	FAA

MBI	DATE	AS-BUILTS	FAA

AMBLER AIRPORT
AMBLER, ALASKA
TERMINAL PLAN

SHEET
5 OF
10



DESIGN	REH
DRAWN	REH
CHECKED	CML

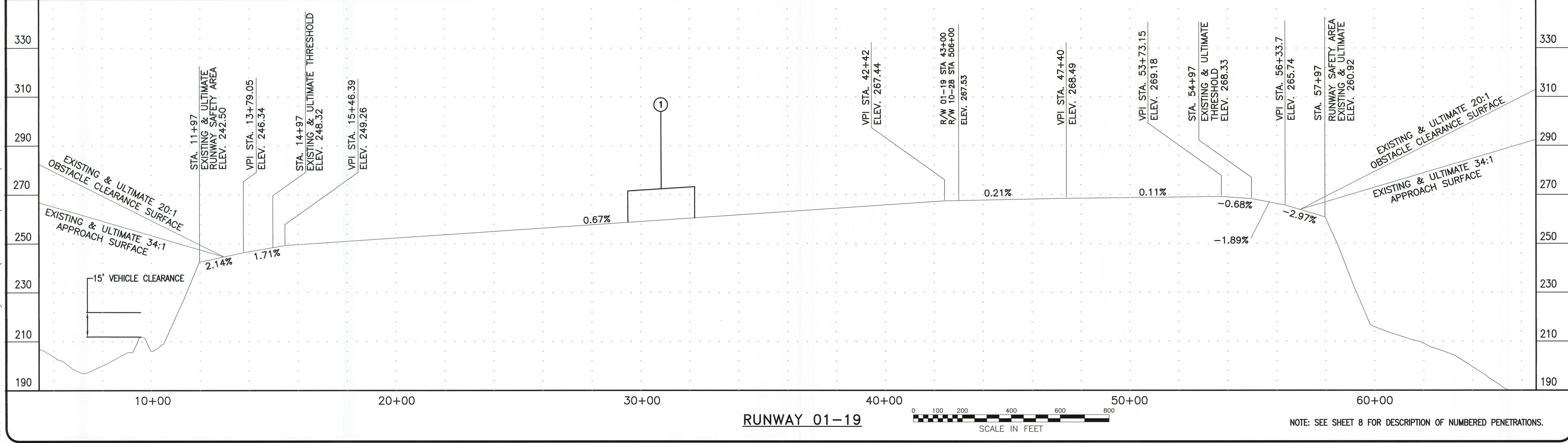
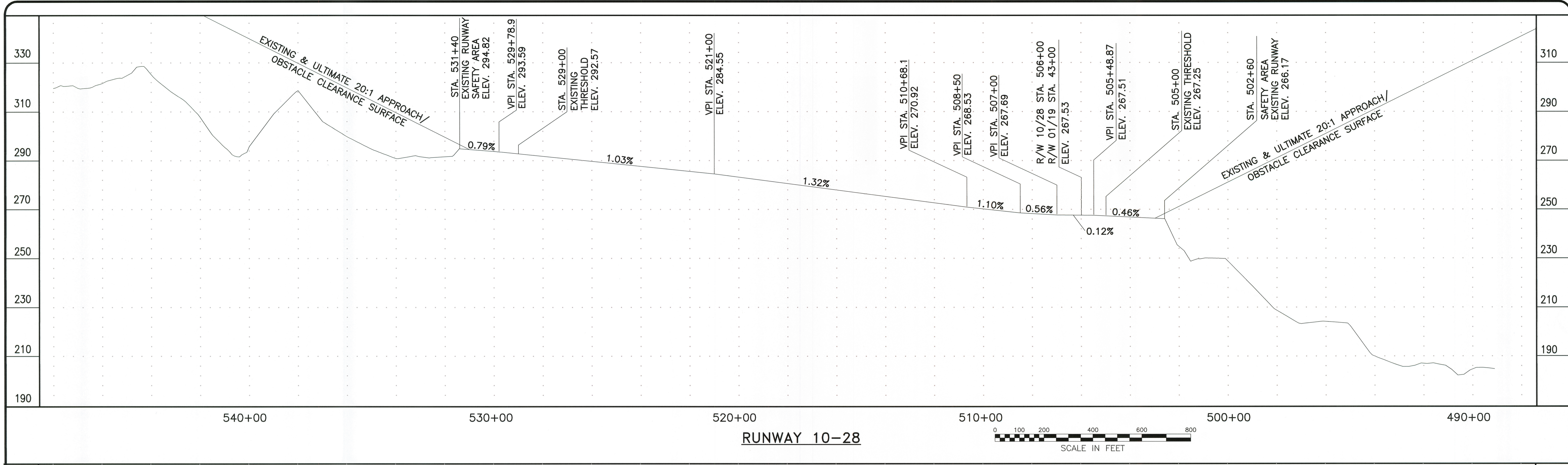
STATE OF ALASKA
 DEPARTMENT OF TRANSPORTATION AND PUBLIC FACILITIES
 NORTHERN REGION-AVIATION

APPROVED: *Albert M.L. Beck* DATE 5/13/19
 ALBERT M.L. BECK, P.E. PROJECT DELIVERY LEAD

BY	DATE	REVISIONS	FAA

BY	DATE	REVISIONS	FAA
MBI	3/19	AS-BUILTS	

AMBLER AIRPORT
 AMBLER, ALASKA
 EXISTING & ULTIMATE INNER PORTION
 OF APPROACH SURFACE



DESIGN REH
 DRAWN REH
 CHECKED CML

STATE OF ALASKA
 DEPARTMENT OF TRANSPORTATION AND PUBLIC FACILITIES
 NORTHERN REGION-AVIATION

APPROVED: *Albert M.L. Beck*
 ALBERT M.L. BECK, P.E.

DATE: 5/13/19
 PROJECT DELIVERY LEAD

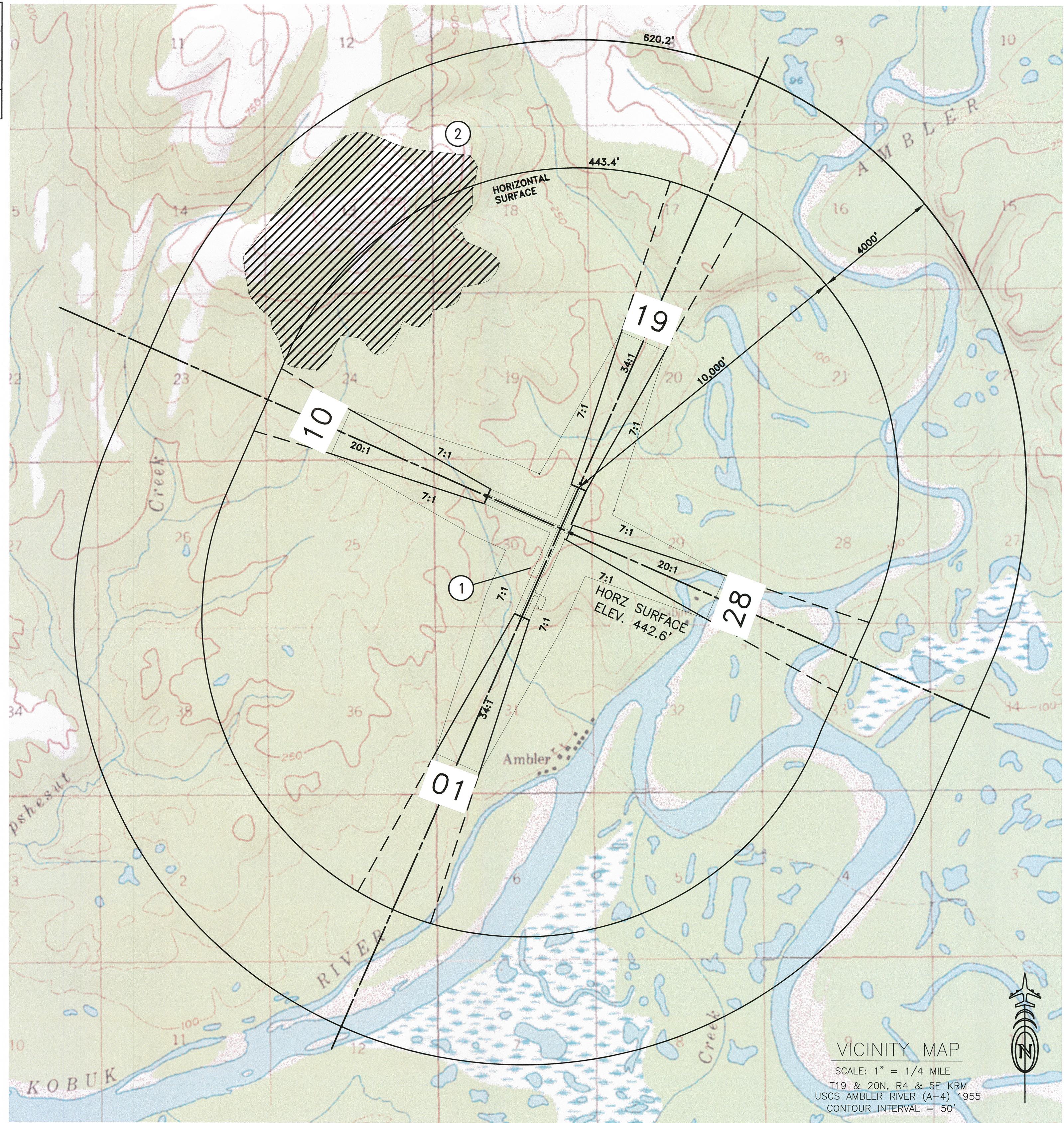
BY	DATE	REVISIONS	FAA

MBI	DATE	AS-BUILTS	FAA

AMBLER AIRPORT
 AMBLER, ALASKA
 EXISTING & ULTIMATE APPROACH PROFILES

SHEET
 7 OF 10

EXISTING PART 77 SURFACE OBSTRUCTION							
ID #	DESCRIPTION	STATION / OFFSET RUNWAY 01-19	ELEVATION	SURFACE \ P PENETRATED	SURFACE \ P ELEVATION	AMOUNT \ P PENETRATED	DISPOSITION
1	TERRAIN	29+60-32+00 / 190-290' LT	259.7-266.9'	PRIMARY/ TRANSITIONAL	259.3-261.5'	0.4-5.4'	TO BE REMOVED.
2	TERRAIN	RW 9-27 1581+60 / 5920' RT	600-700' 443.4'-700'	CONICAL/ HORIZONTAL	443.4'-643.4' 443.4'	43.4'-56.6' 0-256.6'	TO REMAIN.



VICINITY MAP
 SCALE: 1" = 1/4 MILE
 T19 & 20N, R4 & 5E KRM
 USGS AMBLER RIVER (A-4) 1955
 CONTOUR INTERVAL = 50'



DESIGN	REH
DRAWN	REH
CHECKED	CML

STATE OF ALASKA
 DEPARTMENT OF TRANSPORTATION AND PUBLIC FACILITIES
 NORTHERN REGION-AVIATION

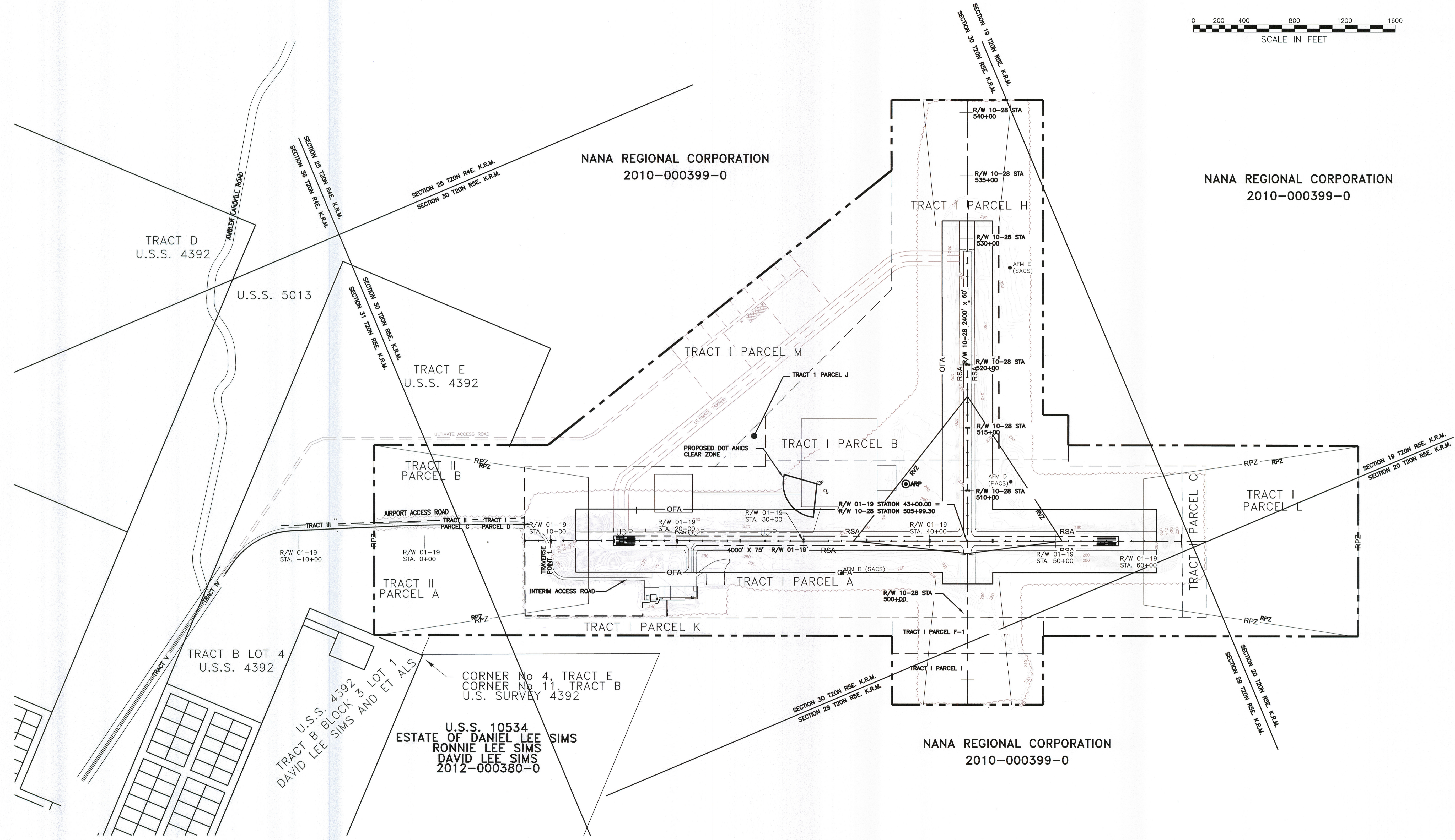
APPROVED: *Albert M.L. Beck* DATE 5/13/19
 ALBERT M.L. BECK, P.E. PROJECT DELIVERY LEAD

BY	DATE	REVISIONS	FAA

MBI	DATE	AS-BUILTS	FAA

AMBLER AIRPORT
 AMBLER, ALASKA
 AIRPORT AIRSPACE

SHEET
 8 OF
 10



NANA REGIONAL CORPORATION
2010-000399-0

NANA REGIONAL CORPORATION
2010-000399-0

NANA REGIONAL CORPORATION
2010-000399-0

U.S.S. 10534
ESTATE OF DANIEL LEE SIMS
RONNIE LEE SIMS
DAVID LEE SIMS
2012-000380-0

TRACT D
U.S.S. 4392

U.S.S. 5013

TRACT E
U.S.S. 4392

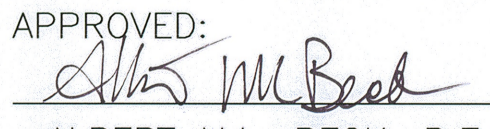
TRACT B LOT 4
U.S.S. 4392

U.S.S. 4392
TRACT B BLOCK 3 LOT 1
DAVID LEE SIMS AND ET ALS

CORNER No 4, TRACT E
CORNER No 11, TRACT B
U.S. SURVEY 4392

DESIGN	REH
DRAWN	REH
CHECKED	CML

STATE OF ALASKA
DEPARTMENT OF TRANSPORTATION AND PUBLIC FACILITIES
NORTHERN REGION-AVIATION

APPROVED: 
ALBERT M.L. BECK, P.E.

DATE: 5/15/19
PROJECT DELIVERY LEAD

BY	DATE	REVISIONS	FAA

BY	DATE	REVISIONS	FAA

AMBLER AIRPORT
AMBLER, ALASKA
AIRPORT PROPERTY MAP

PROPERTY STATUS

TRACT	PARCEL	AREA (ACRES)	GRANTOR	INTEREST	FAA PROJECT NO.	RECORD INFORMATION
I	A	146.28	CITY OF AMBLER	PERPETUAL AIRPORT LEASE	3-02-0354-03-1991	BOOK 35 PAGE 590 (K.R.D.)
I	A	146.28	NANA REGIONAL CORP.	PERPETUAL SUBSURFACE EASEMENT & RESTRICTIVE COVENANT	3-02-0354-03-1991	BOOK 35 PAGE 603 (K.R.D.) SEE ALSO PATENT 50-2011-0037
I	B	19.29	CITY OF AMBLER	PERPETUAL AIRPORT LEASE	3-02-0354-03-1991	BOOK 35 PAGE 590 (K.R.D.)
I	B	19.29	NANA REGIONAL CORP.	PERPETUAL SUBSURFACE EASEMENT & RESTRICTIVE COVENANT	3-02-0354-03-1991	BOOK 35 PAGE 603 (K.R.D.) SEE ALSO PATENT 50-2011-0037
I	C	5.23	CITY OF AMBLER	PERPETUAL AIRPORT LEASE	3-02-0354-03-1991	BOOK 35 PAGE 590 (K.R.D.)
I	C	5.23	NANA REGIONAL CORP.	PERPETUAL SUBSURFACE EASEMENT & RESTRICTIVE COVENANT	3-02-0354-03-1991	BOOK 35 PAGE 603 (K.R.D.) SEE ALSO PATENT 50-2011-0037
I	D	0.8578	CITY OF AMBLER	PERPETUAL AIRPORT LEASE (ROADWAY)	3-02-0354-04-2014	BOOK 35 PAGE 603 (K.R.D.) SEE ALSO PATENT 50-2011-0037
I	D	0.8578	NANA REGIONAL CORP.	PERPETUAL SUBSURFACE EASEMENT & RESTRICTIVE COVENANT	3-02-0354-04-2014	BOOK 32 PAGE 745 (K.R.D.)
I	F-1	7.872	CITY OF AMBLER	PERPETUAL AIRPORT LEASE	3-02-0354-03-1991	BOOK 35 PAGE 590 (K.R.D.)
I	F-1	7.872	NANA REGIONAL CORP.	PERPETUAL SUBSURFACE EASEMENT & RESTRICTIVE COVENANT	3-02-0354-03-1991	BOOK 35 PAGE 603 (K.R.D.) SEE ALSO PATENT 50-2011-0037
I	H	80.374	CITY OF AMBLER	PERPETUAL AIRPORT LEASE	3-02-0354-03-1991	BOOK 35 PAGE 590 (K.R.D.)
I	H	80.374	NANA REGIONAL CORP.	PERPETUAL SUBSURFACE EASEMENT & RESTRICTIVE COVENANT	3-02-0354-03-1991	BOOK 35 PAGE 603 (K.R.D.) SEE ALSO PATENT 50-2011-0037
I	I	11.4111	CITY OF AMBLER	PERPETUAL AIRPORT LEASE	3-02-0354-03-1991	BOOK 35 PAGE 590 (K.R.D.)
I	I	11.4111	NANA REGIONAL CORP.	PERPETUAL SUBSURFACE EASEMENT & RESTRICTIVE COVENANT	3-02-0354-03-1991	BOOK 35 PAGE 603 (K.R.D.) SEE ALSO PATENT 50-2011-0037
I	J	1.833	CITY OF AMBLER	PERPETUAL AIRPORT LEASE	3-02-0354-03-1991	BOOK 35 PAGE 590 (K.R.D.)
I	J	1.833	NANA REGIONAL CORP.	PERPETUAL SUBSURFACE EASEMENT & RESTRICTIVE COVENANT	3-02-0354-03-1991	BOOK 35 PAGE 603 (K.R.D.) SEE ALSO PATENT 50-2011-0037
I	K	21.4009	CITY OF AMBLER	PERPETUAL AIRPORT LEASE	3-02-0354-04-2014	PORTION OF PATENT 50-2011-0037 (K.R.D.); PORTION OF SECTION 30 T20N R5E KRM
I	K	21.4009	NANA REGIONAL CORP.	PERPETUAL SUBSURFACE EASEMENT & RESTRICTIVE COVENANT	3-02-0354-04-2014	PORTION OF PATENT 50-2011-0037 (K.R.D.); PORTION OF SECTION 30 T20N R5E KRM
I	L	50.4095	CITY OF AMBLER	PERPETUAL AIRPORT LEASE	3-02-0354-04-2014	PORTION OF PATENT 50-2011-0037 (K.R.D.); PORTION OF SECTION 30 T20N R5E KRM
I	L	50.4095	NANA REGIONAL CORP.	PERPETUAL SUBSURFACE EASEMENT & RESTRICTIVE COVENANT	3-02-0354-04-2014	PORTION OF PATENT 50-2011-0037 (K.R.D.); PORTION OF SECTION 30 T20N R5E KRM
I	M	59.2620	CITY OF AMBLER	PERPETUAL AIRPORT LEASE	3-02-0354-04-2014	PORTION OF PATENT 50-2011-0037 (K.R.D.); PORTION OF SECTION 30 T20N R5E KRM
I	M	59.2620	NANA REGIONAL CORP.	PERPETUAL SUBSURFACE EASEMENT & RESTRICTIVE COVENANT	3-02-0354-04-2014	PORTION OF PATENT 50-2011-0037 (K.R.D.); PORTION OF SECTION 30 T20N R5E KRM
II	A	12.0156	CITY OF AMBLER	PERPETUAL AIRPORT LEASE	3-02-0354-04-2014	TRACT E, U.S.S. 4392; PORTION OF PATENT 50-82-0029; SEE ALSO BOOK 22 PAGE 991 (K.R.D.)
II	A	12.0156	NANA REGIONAL CORP.	PERPETUAL SUBSURFACE EASEMENT & RESTRICTIVE COVENANT	3-02-0354-04-2014	TRACT E, U.S.S. 4392; PORTION OF PATENT 50-82-0029; SEE ALSO BOOK 22 PAGE 991 (K.R.D.)
II	B	12.3716	CITY OF AMBLER	PERPETUAL AIRPORT LEASE	3-02-0354-04-2014	TRACT E, U.S.S. 4392; PORTION OF PATENT 50-82-0029; SEE ALSO BOOK 22 PAGE 991 (K.R.D.)
II	B	12.3716	NANA REGIONAL CORP.	PERPETUAL SUBSURFACE EASEMENT & RESTRICTIVE COVENANT	3-02-0354-04-2014	TRACT E, U.S.S. 4392; PORTION OF PATENT 50-82-0029; SEE ALSO BOOK 22 PAGE 991 (K.R.D.)
II	C	1.8814	CITY OF AMBLER	PERPETUAL AIRPORT LEASE (ROADWAY)	3-02-0354-04-2014	BOOK 32 PAGE 745 (K.R.D.)
II	C	1.8814	NANA REGIONAL CORP.	PERPETUAL SUBSURFACE EASEMENT & RESTRICTIVE COVENANT	3-02-0354-04-2014	SUBSURFACE LEASE - PORTION OF TRACT E, U.S.S. 4392; PORTION OF PATENT 50-82-0029;
III		3.0212	CITY OF AMBLER	PERPETUAL AIRPORT LEASE (ROADWAY)	3-02-0354-04-2014	BOOK 32 PAGE 745 (K.R.D.)
III		3.0212	NANA REGIONAL CORP.	PERPETUAL SUBSURFACE EASEMENT & RESTRICTIVE COVENANT	3-02-0354-04-2014	SUBSURFACE LEASE - PORTION OF TRACT E, U.S.S. 4392; PORTION OF PATENT 50-82-0029;
IV		1.0411	TOWNSITE TRUSTEE	GRANT OF PERPETUAL EASEMENT	N/A	BOOK 47 PG 88; SURFACE ONLY; SEE ALSO BOOK 32 PG 745 (K.R.D.)
V		5.0445	NANA REGIONAL CORP.	PERPETUAL AIRPORT LEASE (ROADWAY)	3-02-0354-04-2014	BOOK 32 PAGE 745 (K.R.D.)
V		5.0445	ESTATE OF SIMS ET ALS	PERPETUAL SUBSURFACE EASEMENT & RESTRICTIVE COVENANT	3-02-0354-04-2014	SUBSURFACE LEASE - PORTION OF LOT 2, U.S.S. 5013; PORTION OF PATENT 50-2011-0037;
VI		0.0071		FAA WAIVER -- NOT PART OF AIRPORT	N/A	PORTION OF U.S.S 4392, TRACT B, BLOCK 3, LOT 1; SEE INSTRUMENT NUMBER 2012-000380-0

DESIGN REH
 DRAWN REH
 CHECKED CML

STATE OF ALASKA
 DEPARTMENT OF TRANSPORTATION AND PUBLIC FACILITIES
 NORTHERN REGION-AVIATION

APPROVED: *Albert M.L. Beck* DATE 5/13/19
 ALBERT M.L. BECK, P.E. PROJECT DELIVERY LEAD

BY	DATE	REVISIONS	FAA

MBI	DATE	AS-BUILTS	FAA

AMBLER AIRPORT
 AMBLER, ALASKA
 AIRPORT PROPERTY STATUS

SHEET
 10 OF 10