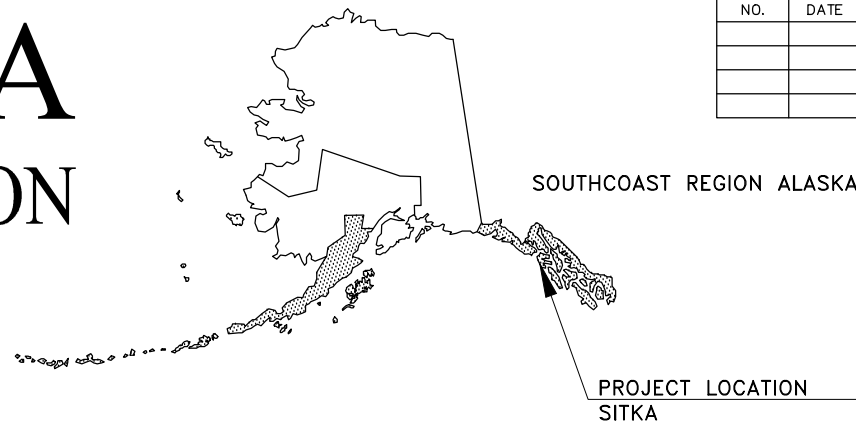


FILE G:\Sit\681000\Plans\2017 Options\Opt. 2\681000\_A1\_Tsht.dwg DATE 5/4/2017 14:02 LAYOUT A1 DESIGNED NG CHECKED CT DRAFTED RC, NG

# STATE OF ALASKA

## DEPARTMENT OF TRANSPORTATION & PUBLIC FACILITIES



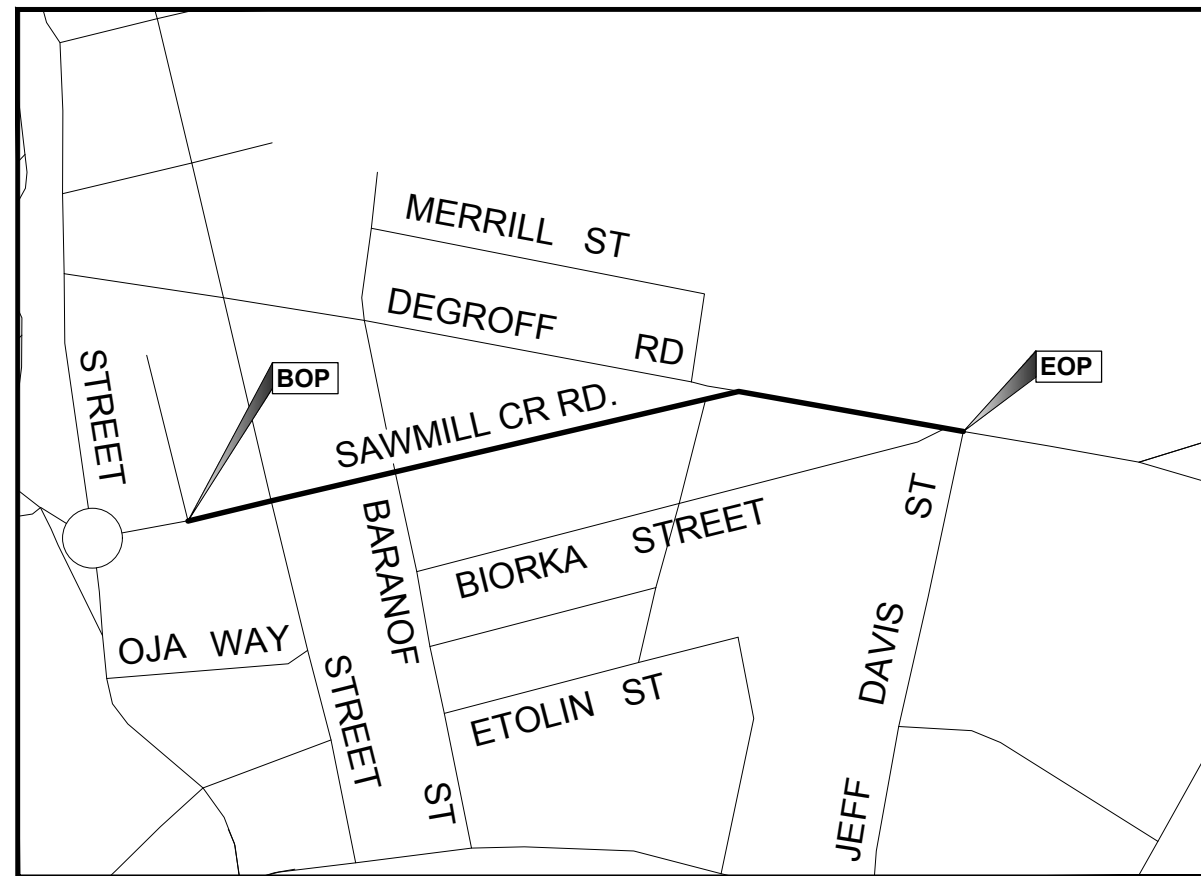
NO.	DATE	REVISIONS	STATE	PROJECT DESIGNATION	YEAR	SHEET NO.	TOTAL SHEETS
			ALASKA	Z681000000/0933042	2017	A1	A1
						PLAN SET TOTAL	11
CDS ROUTE: 295500				MILEPOINT: 0.08 TO 0.42			

### PROPOSED HIGHWAY PROJECT

## SIT SAWMILL CREEK ROAD RESURFACING AND PEDESTRIAN IMPROVEMENTS

### PROJECT NO. NH-0933042/Z681000000

PAVING, PATHWAYS, SIGNING, STRIPING



VICINITY MAP

OPTION 1

PRELIMINARY PLANS

USE THESE PLANS IN CONJUNCTION WITH THE STATE OF ALASKA STANDARD SPECIFICATIONS FOR HIGHWAY CONSTRUCTION, 2017 EDITION AND THE PROJECT SPECIAL PROVISIONS.

STATE OF ALASKA  
DEPARTMENT OF TRANSPORTATION & PUBLIC FACILITIES  
6860 GLACIER HIGHWAY, JUNEAU, AK 99801  
(907) 465-1763

APPROVED:

REGIONAL PRECONSTRUCTION ENGINEER L. PAT CARROLL, P.E. DATE

CONCUR:

REGIONAL DIRECTOR MICHAEL J. COFFEY DATE

DRAFT

FIRM STATE OF ALASKA DEPARTMENT OF TRANSPORTATION & PUBLIC FACILITIES  
 FILE G:\sit\68100\planset\2017 Options\Opt. 1\68100\_F1-F7 Plan\_2017opt. 1.dwg

ADDRESS 6860 GLACIER HWY, JUNEAU, AK 99811  
 DATE 5/4/2017 14:30 LAYOUT F1

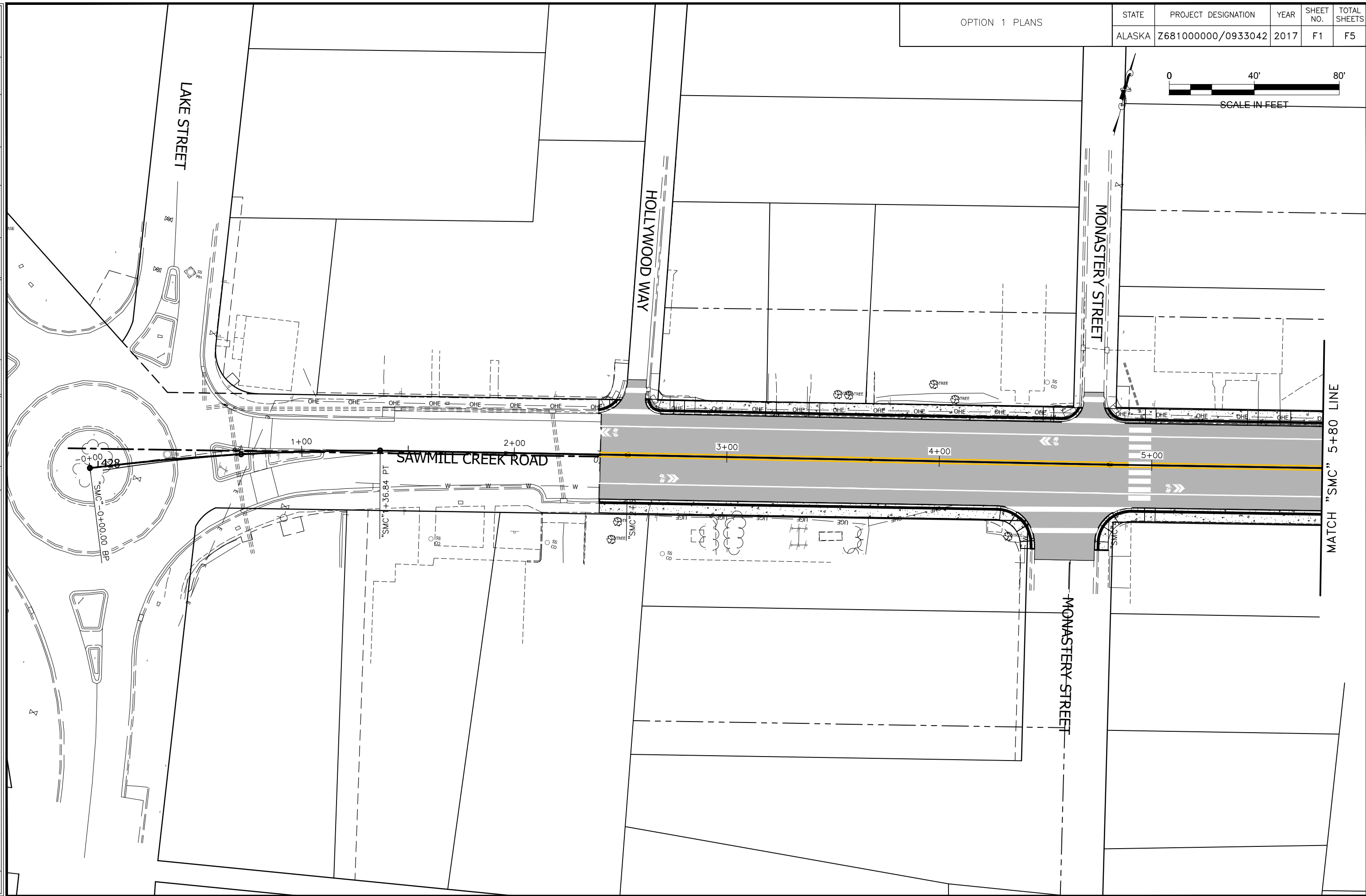
PHONE (907) 465-1763  
 DESIGNED CI

CERTIFICATE OF AUTH #:  
 CHECKED

DRAFTED JT

OPTION 1 PLANS

STATE	PROJECT DESIGNATION	YEAR	SHEET NO.	TOTAL SHEETS
ALASKA	Z681000000/0933042	2017	F1	F5



MATCH "SMC" 5+80 LINE

FIRM STATE OF ALASKA DEPARTMENT OF TRANSPORTATION & PUBLIC FACILITIES  
 FILE C:\sit\68100\planset\2017 Options\Opt. 1\68100\_F1-F7 Plan\_2017opt. 1.dwg

ADDRESS 6860 GLACIER HWY, JUNEAU, AK 99811  
 DATE 5/4/2017 14:30 LAYOUT F2

PHONE (907) 465-1763  
 DESIGNED CI

CERTIFICATE OF AUTH #:  
 DRAFTED JT

CHECKED

OPTION 1 PLANS

STATE	PROJECT DESIGNATION	YEAR	SHEET NO.	TOTAL SHEETS
ALASKA	Z681000000/0933042	2017	F2	F5

SCALE IN FEET

0 40' 80'

MATCH "SMC" 5+80 LINE

BARANOF STREET

BARANOF STREET

BARANOF STREET

BARANOF STREET

BARANOF STREET

BARANOF STREET

BARANOF STREET

BARANOF STREET

BARANOF STREET

BARANOF STREET

BARANOF STREET

BARANOF STREET

BARANOF STREET

BARANOF STREET

BARANOF STREET

BARANOF STREET

BARANOF STREET

BARANOF STREET

BARANOF STREET

BARANOF STREET

BARANOF STREET

BARANOF STREET

BARANOF STREET

BARANOF STREET

BARANOF STREET

BARANOF STREET

BARANOF STREET

BARANOF STREET

BARANOF STREET

BARANOF STREET

BARANOF STREET

BARANOF STREET

BARANOF STREET

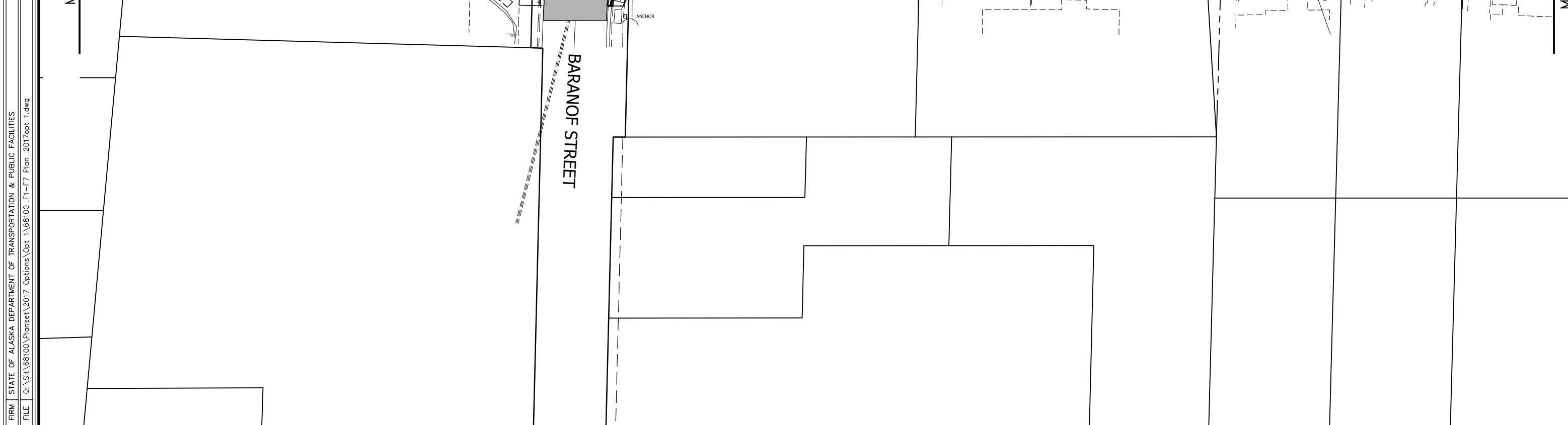
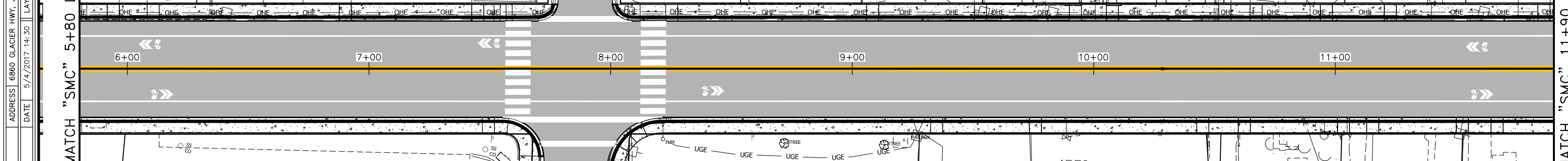
BARANOF STREET

BARANOF STREET

BARANOF STREET

BARANOF STREET

MATCH "SMC" 11+90 LINE



FIRM STATE OF ALASKA DEPARTMENT OF TRANSPORTATION & PUBLIC FACILITIES  
FILE C:\sit\68100\planset\2017 Options\Opt. 1\68100\_F1-F7 Plan\_2017opt. 1.dwg

ADDRESS 6860 GLACIER HWY, JUNEAU, AK 99811  
DATE 5/4/2017 14:30 LAYOUT F3

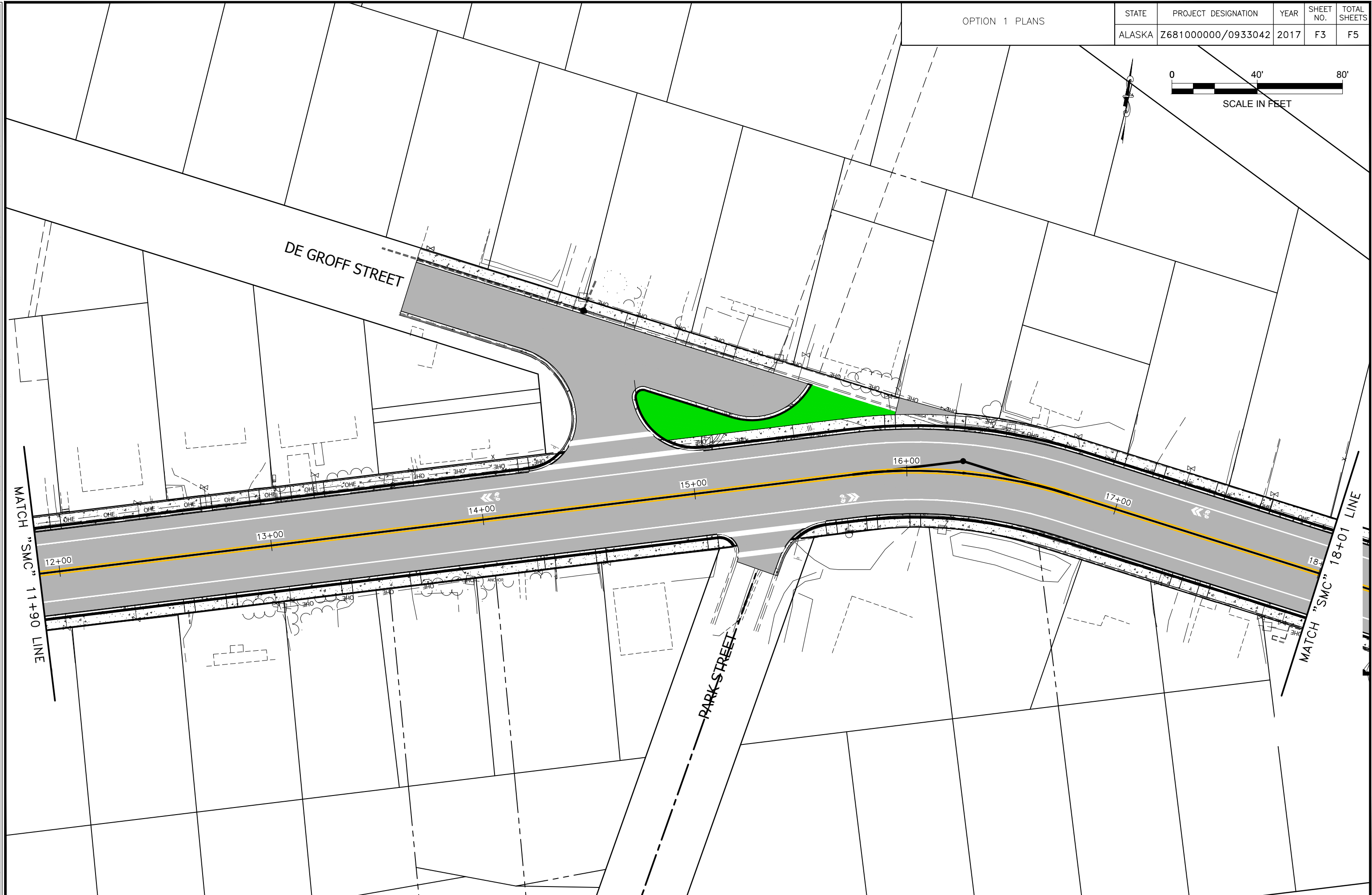
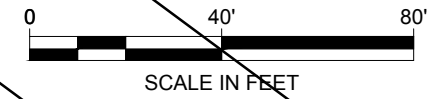
PHONE (907) 465-1763  
DESIGNED CI

CERTIFICATE OF AUTH #:  
DRAFTED JT

CHECKED

OPTION 1 PLANS

STATE	PROJECT DESIGNATION	YEAR	SHEET NO.	TOTAL SHEETS
ALASKA	Z681000000/0933042	2017	F3	F5



FIRM STATE OF ALASKA DEPARTMENT OF TRANSPORTATION & PUBLIC FACILITIES  
 FILE G:\SIT\68100\Plans\2017 Options\Opt. 1\68100\_F1-F7 Plan\_2017opt. 1.dwg

ADDRESS 6860 GLACIER HWY, JUNEAU, AK 99811  
 DATE 5/4/2017 14:30 LAYOUT F4

PHONE (907) 465-1763  
 DESIGNED CI

CERTIFICATE OF AUTH #:  
 DRAFTED JT

CHECKED

OPTION 1 PLANS

STATE	PROJECT DESIGNATION	YEAR	SHEET NO.	TOTAL SHEETS
ALASKA	Z681000000/0933042	2017	F4	11

