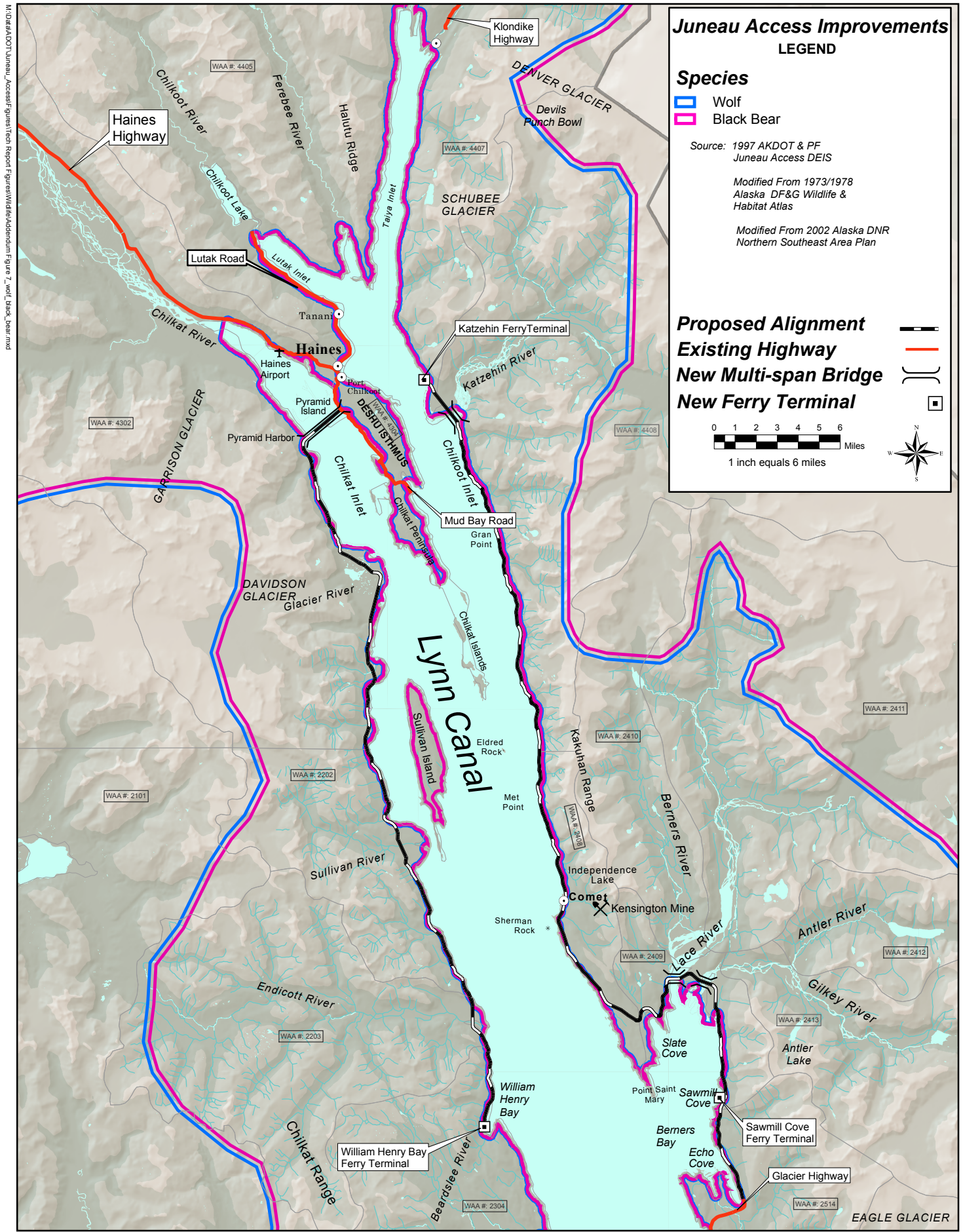


**Figure 6**  
**Tongass Land Management Plan Land Use Designations**

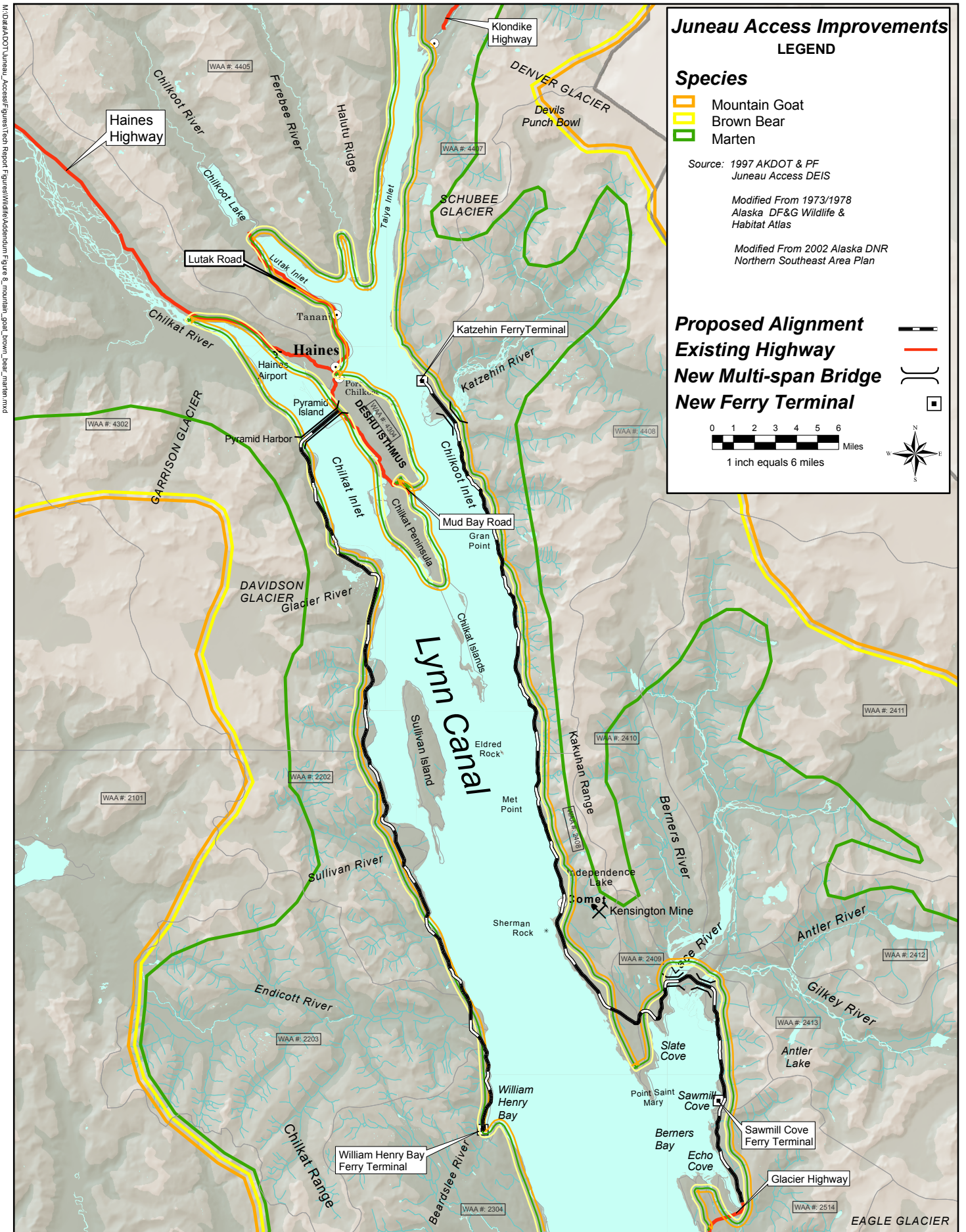




**Figure 7**  
**Wolf and Black Bear Habitat in Lynn Canal**

M:\06\001\Juneau\_Access\figures\Tech Report\Figures\Wildlife\addendum\Figure 7\_wolf\_black\_bear.mxd





**Figure 8**  
**Mountain Goat, Brown Bear and Marten Habitat in Lynn Canal**

**APPENDIX B**  
**BROWN BEAR FIGURES**

Selected from Flynn et al. 2012



*This page intentionally left blank.*

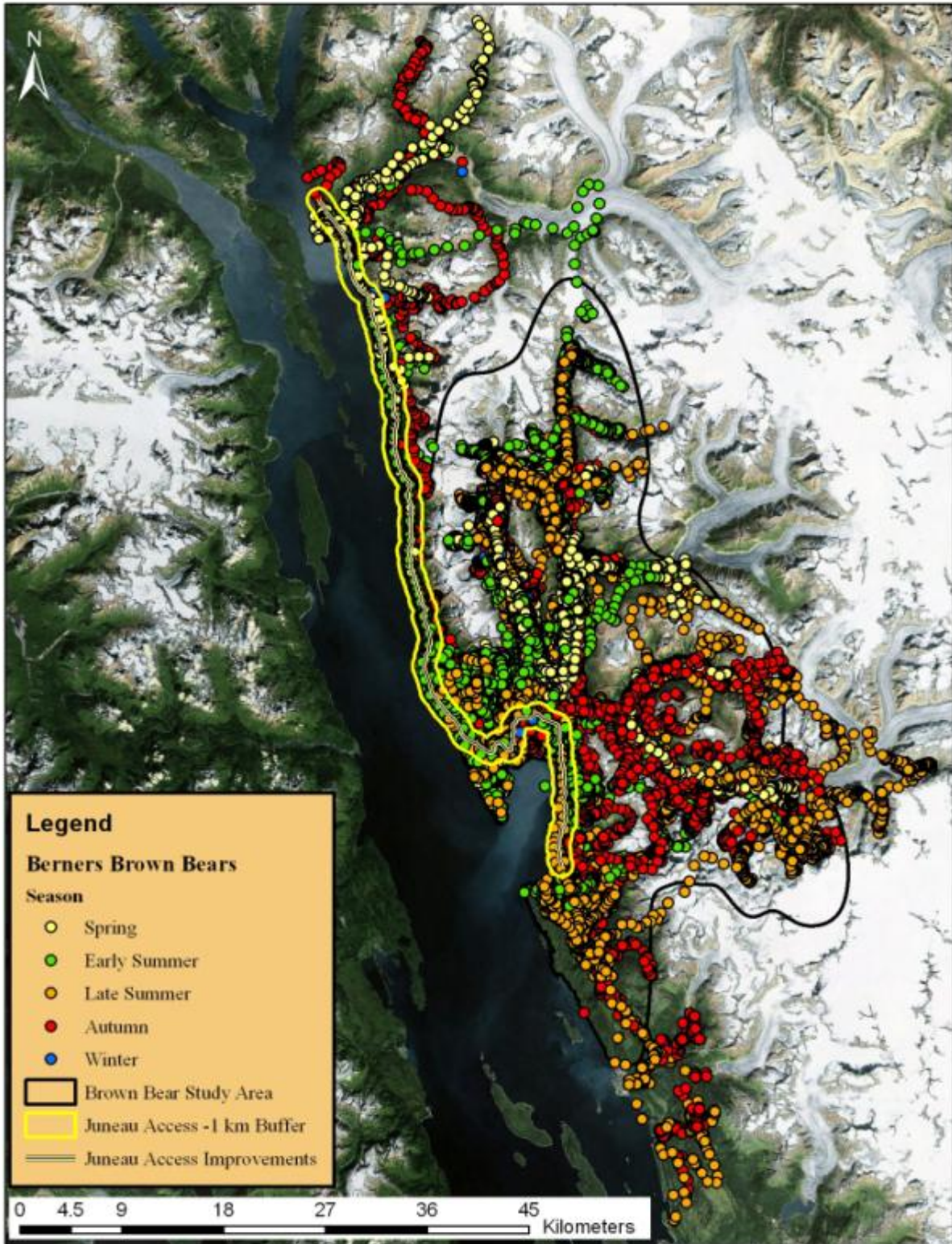
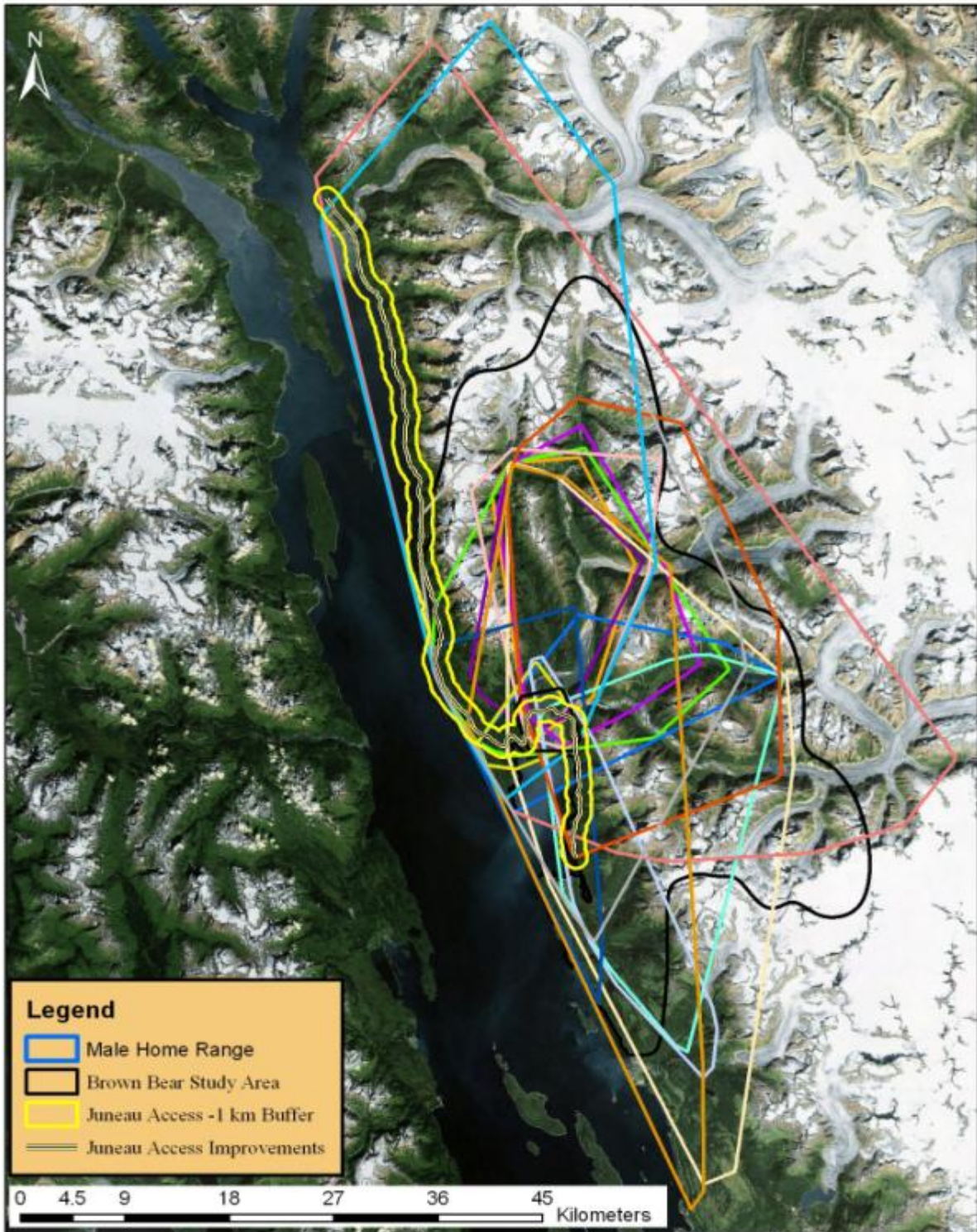


Figure B1. Seasonal brown bear GPS locations collected in the Berners Bay study area 2006 to 2010



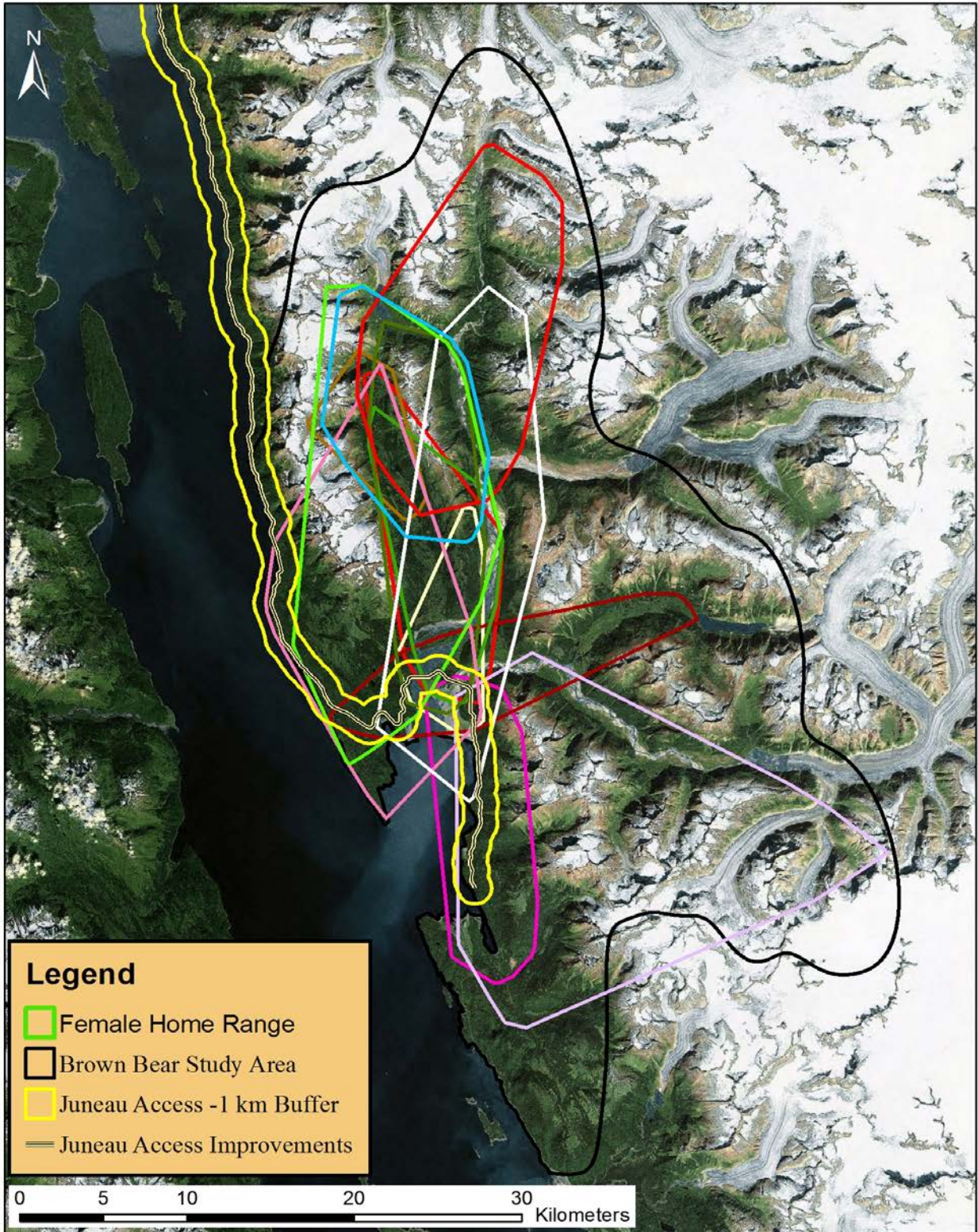
*This page intentionally left blank.*



**Figure B2. Home ranges (minimum convex polygon) of male brown bears in the Berners Bay study area during 2006 to 2010.**



*This page intentionally left blank.*



**Figure B3. Home ranges (minimum convex polygon) of female brown bears in the Berners Bay study area during 2006 to 2010.**



*This page intentionally left blank.*

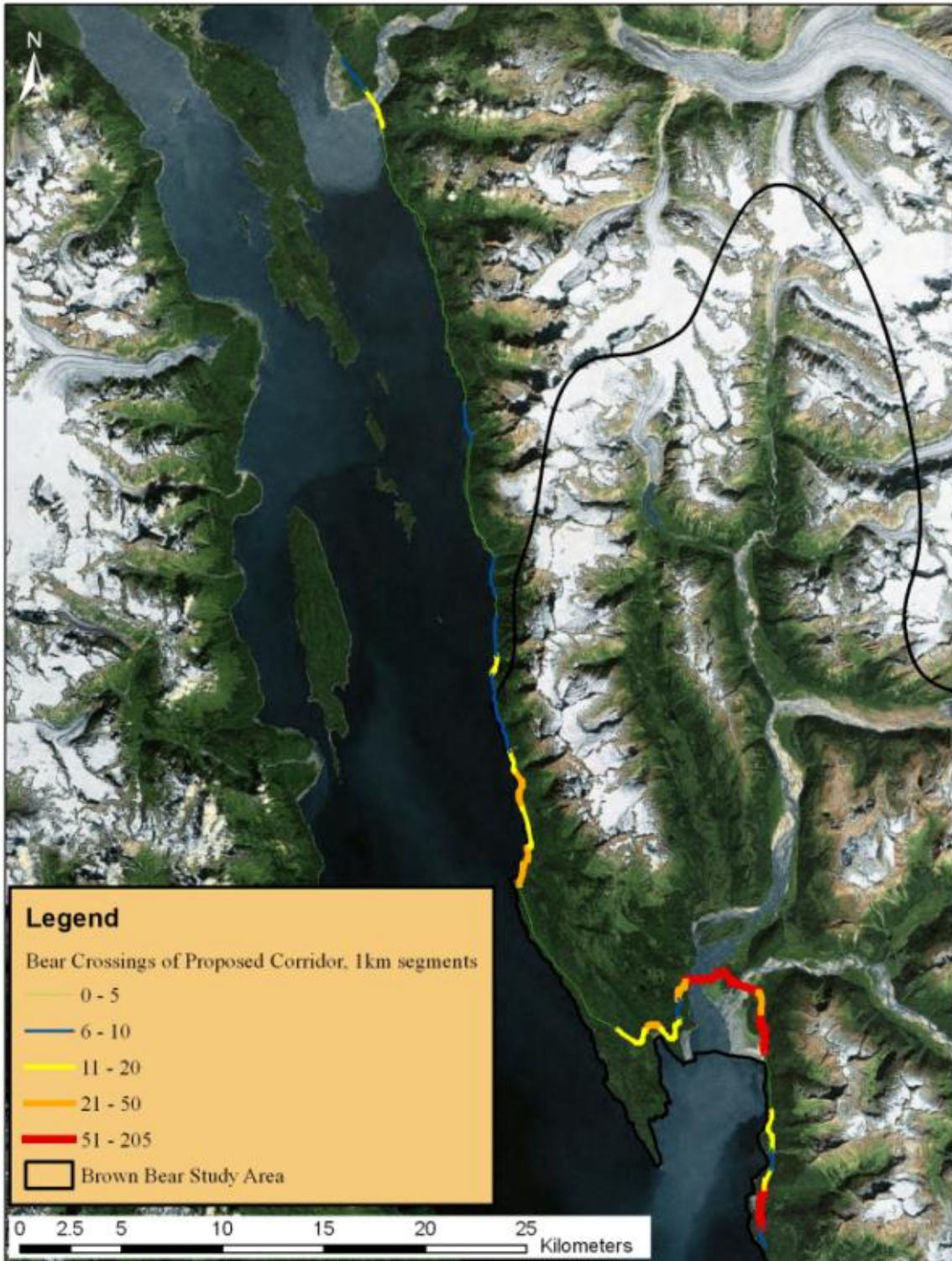


Figure B4. Frequency of brown bear movement paths crossing the proposed Juneau Access Improvements Project road corridor during 2006 to 2010.



*This page intentionally left blank.*

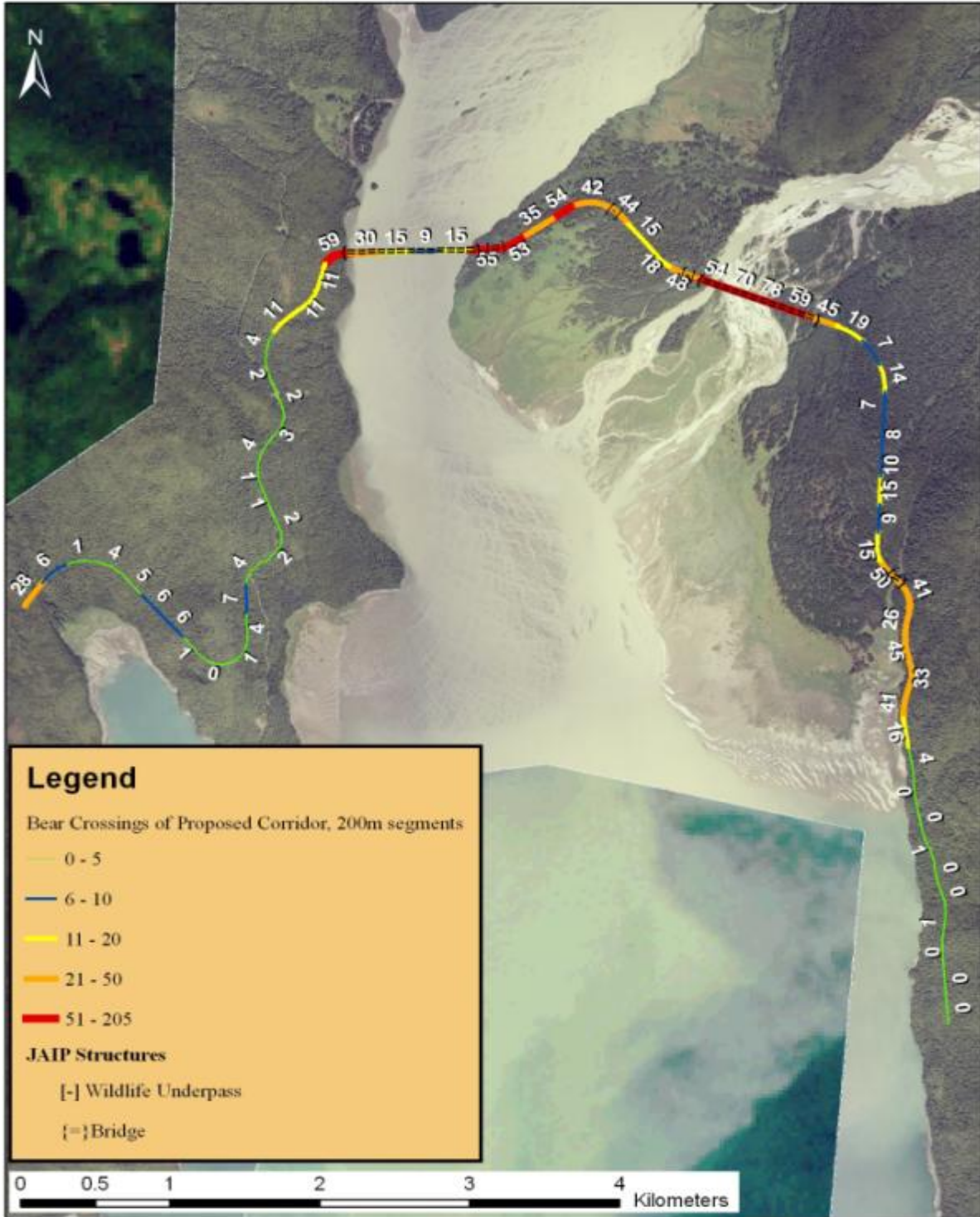


Figure B5. Frequency of brown bear movement paths crossing the proposed Juneau Access Improvements Project road corridor in and near the Berners Bay estuary during 2006 to 2010. The planned underpasses and the bridges are shown.



*This page intentionally left blank.*

**APPENDIX C**  
**MOOSE FIGURES**

Selected from White et al. 2012a



*This page intentionally left blank.*

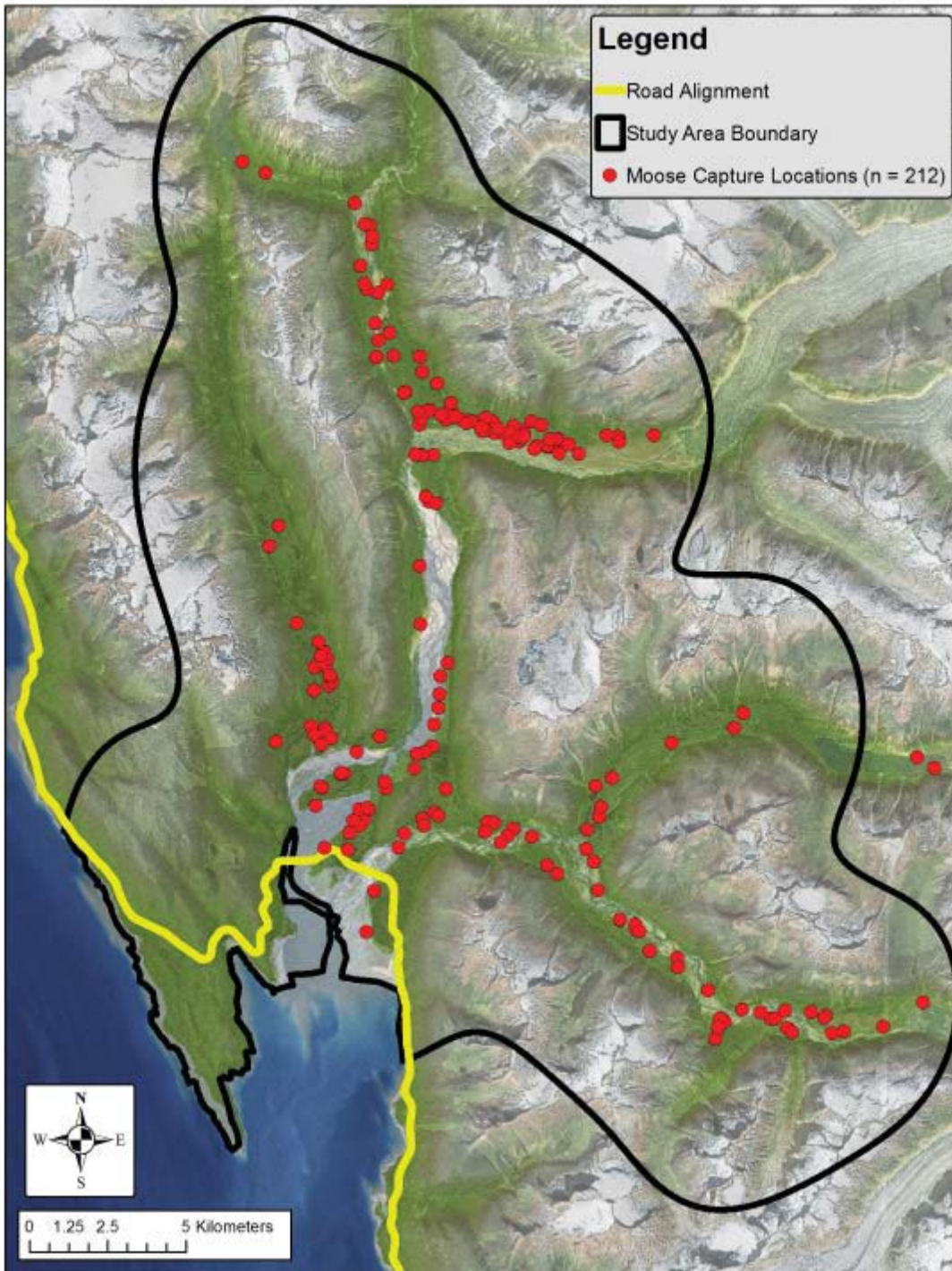
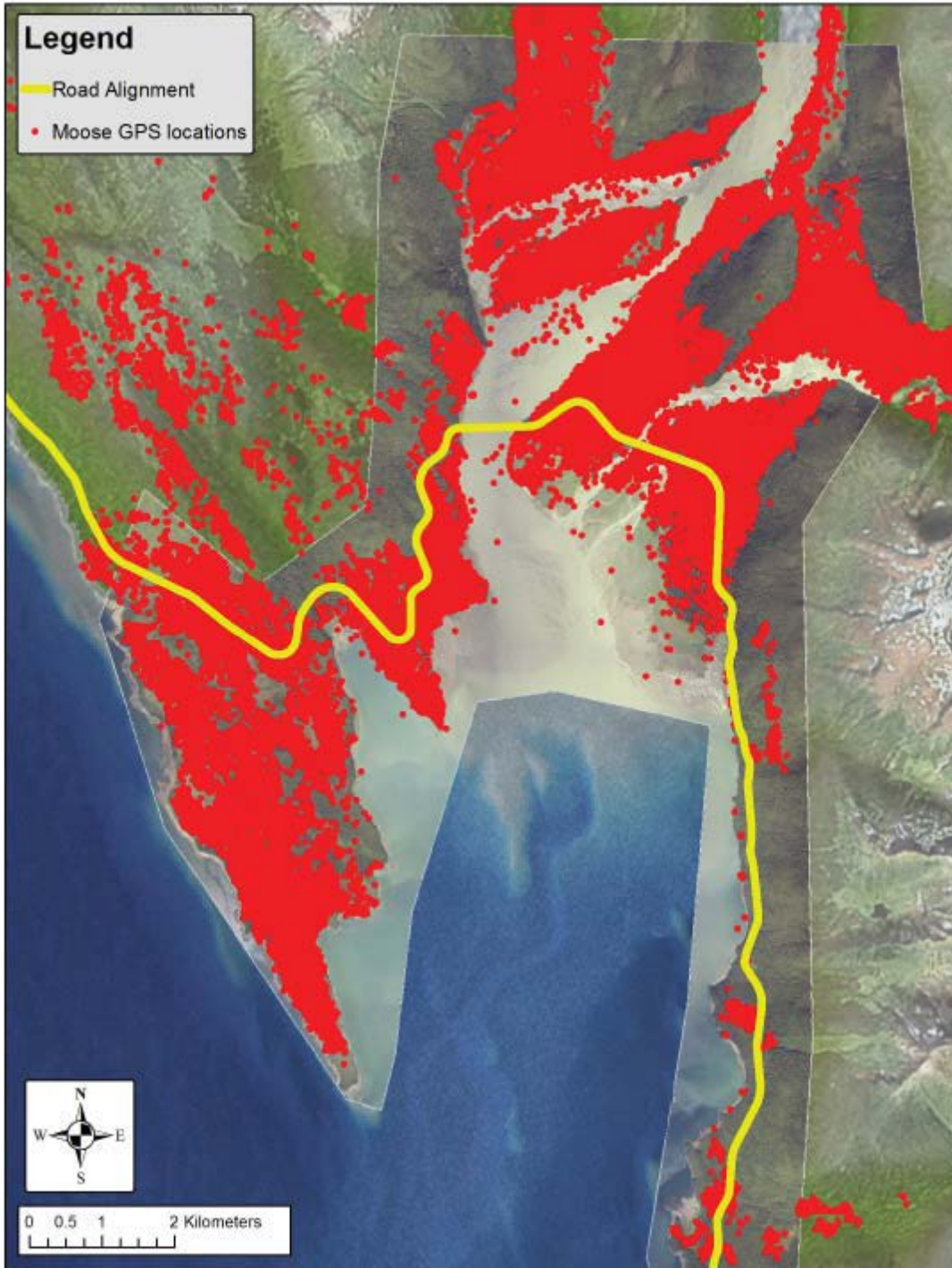


Figure C1: Location of moose captured and monitored in the Berners Bay study area, 2006-2011



*This page intentionally left blank.*



**Figure C2: Map depicting all locations collected from GPS radio collared adult female moose in the lower Berners Bay area, 2006-2011**



*This page intentionally left blank.*

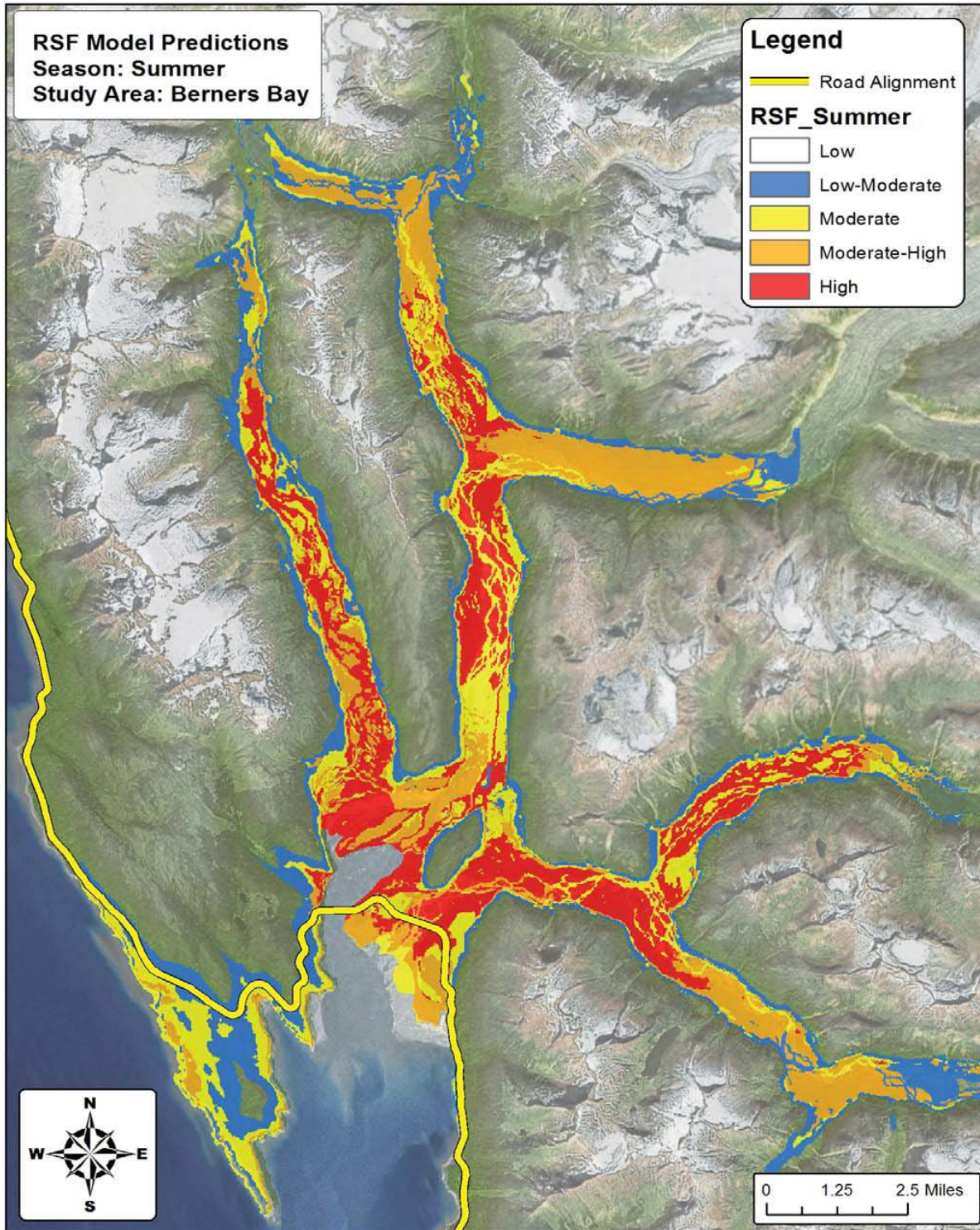


Figure C3: Map predicting relative probability of use for moose during summer in the Berners Bay study area, 2006-2011

*This page intentionally left blank.*



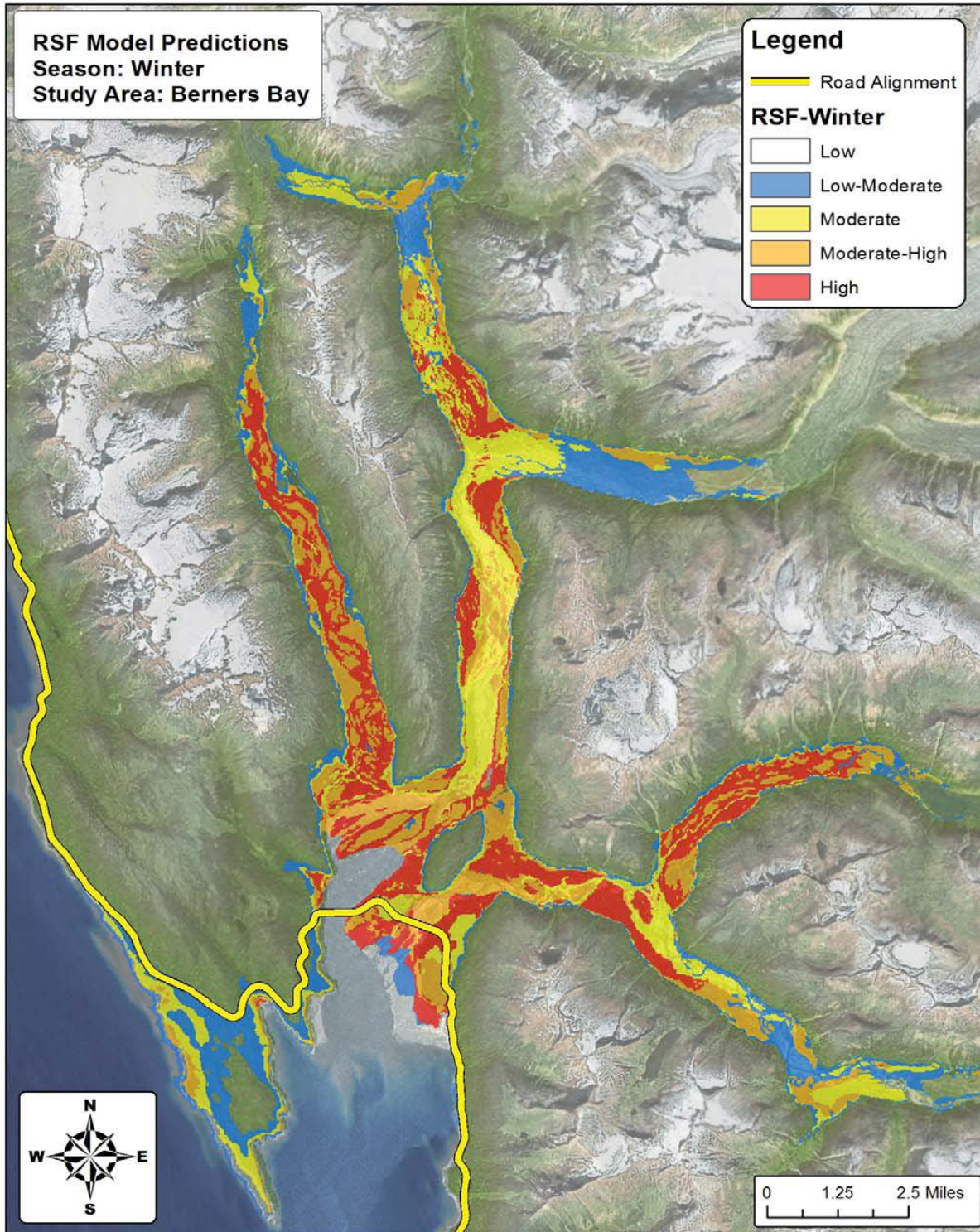


Figure C4: Map predicting relative probability of use for moose during winter in the Berners Bay study area, 2006-2011

*This page intentionally left blank.*



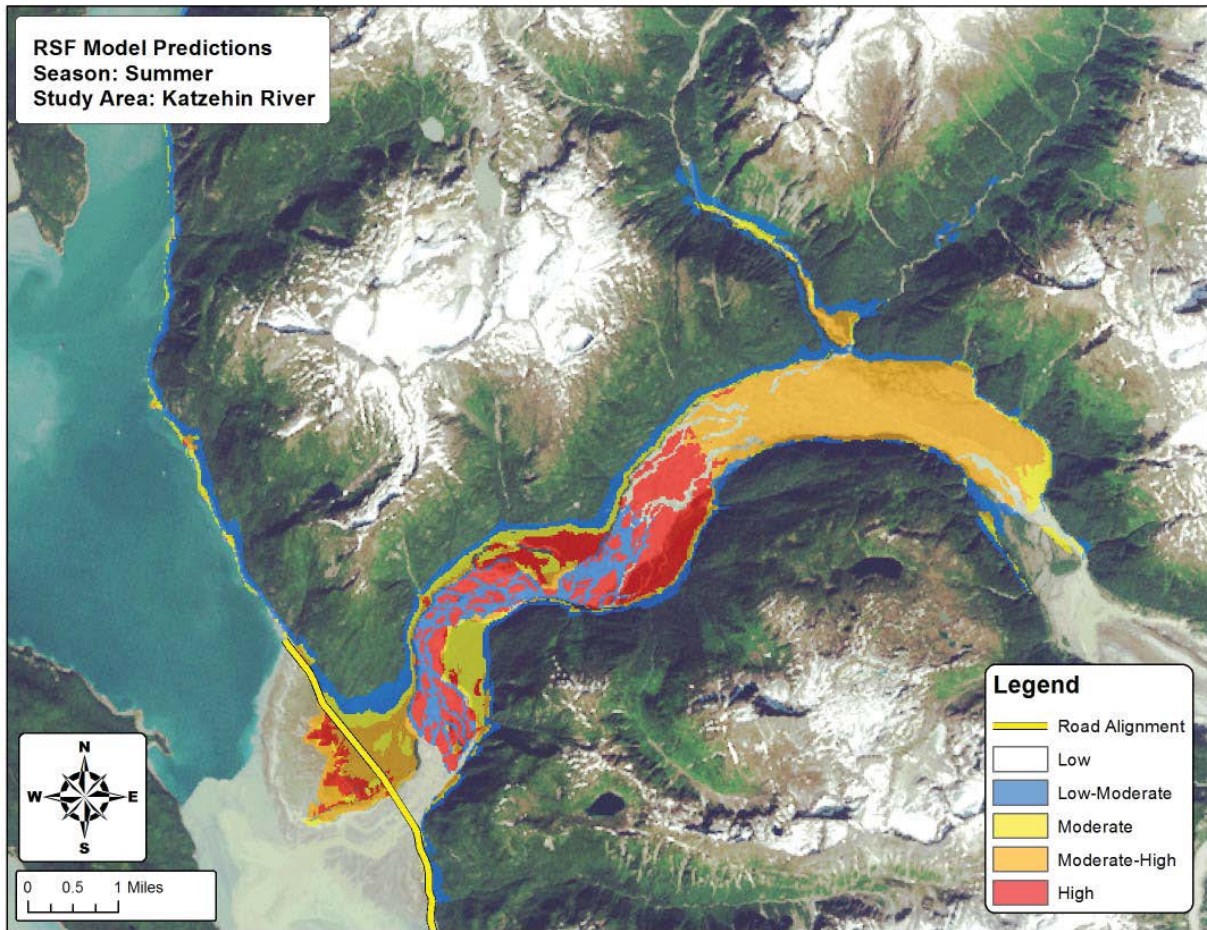
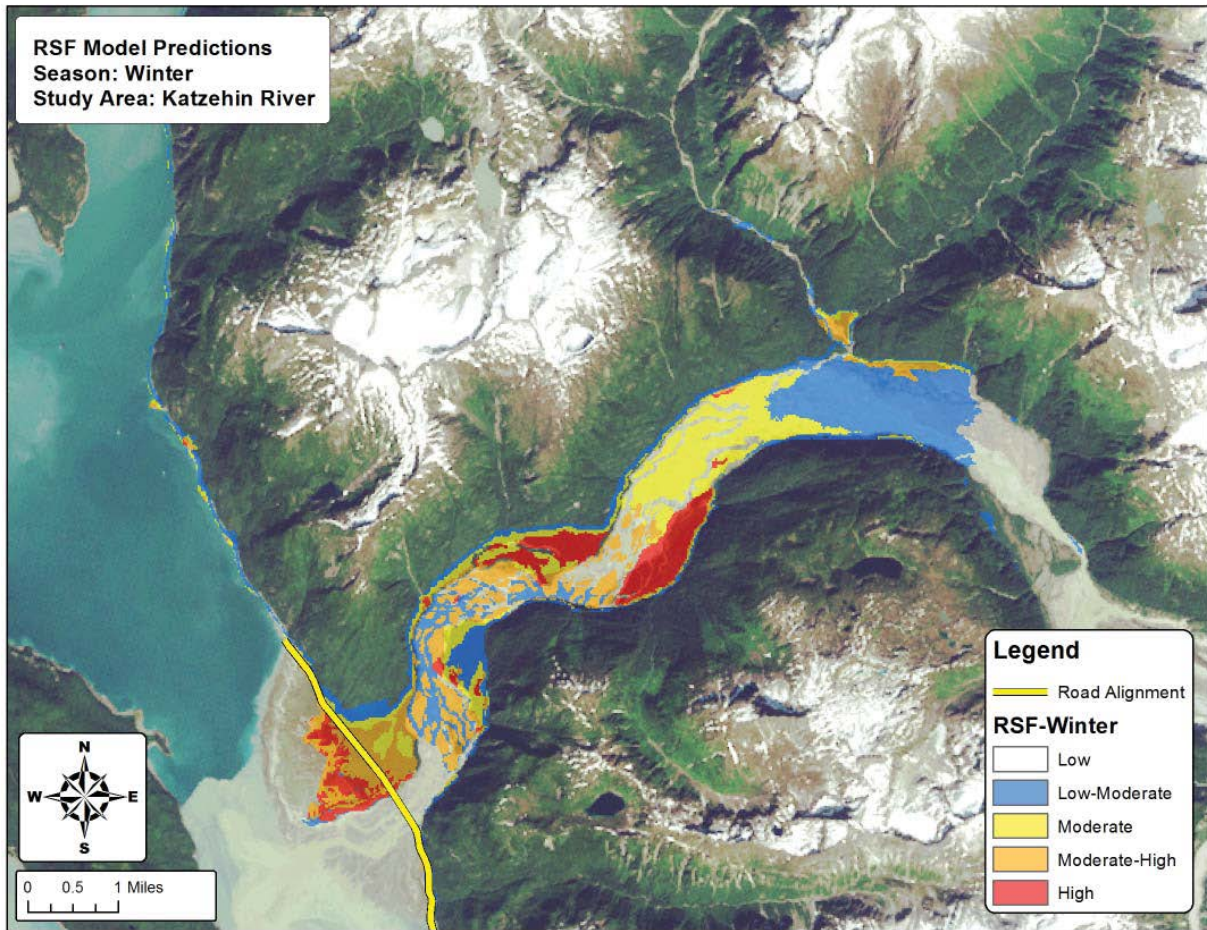


Figure C5: Map predicting relative probability of use for moose during summer in the Katzeihin River area



*This page intentionally left blank.*



**Figure C6: Map predicting relative probability of use for moose during winter in the Katzeihin River area**

*This page intentionally left blank.*



**APPENDIX D**  
**MOUNTAIN GOAT FIGURES**

Selected from White et al. 2012b

*This page intentionally left blank.*

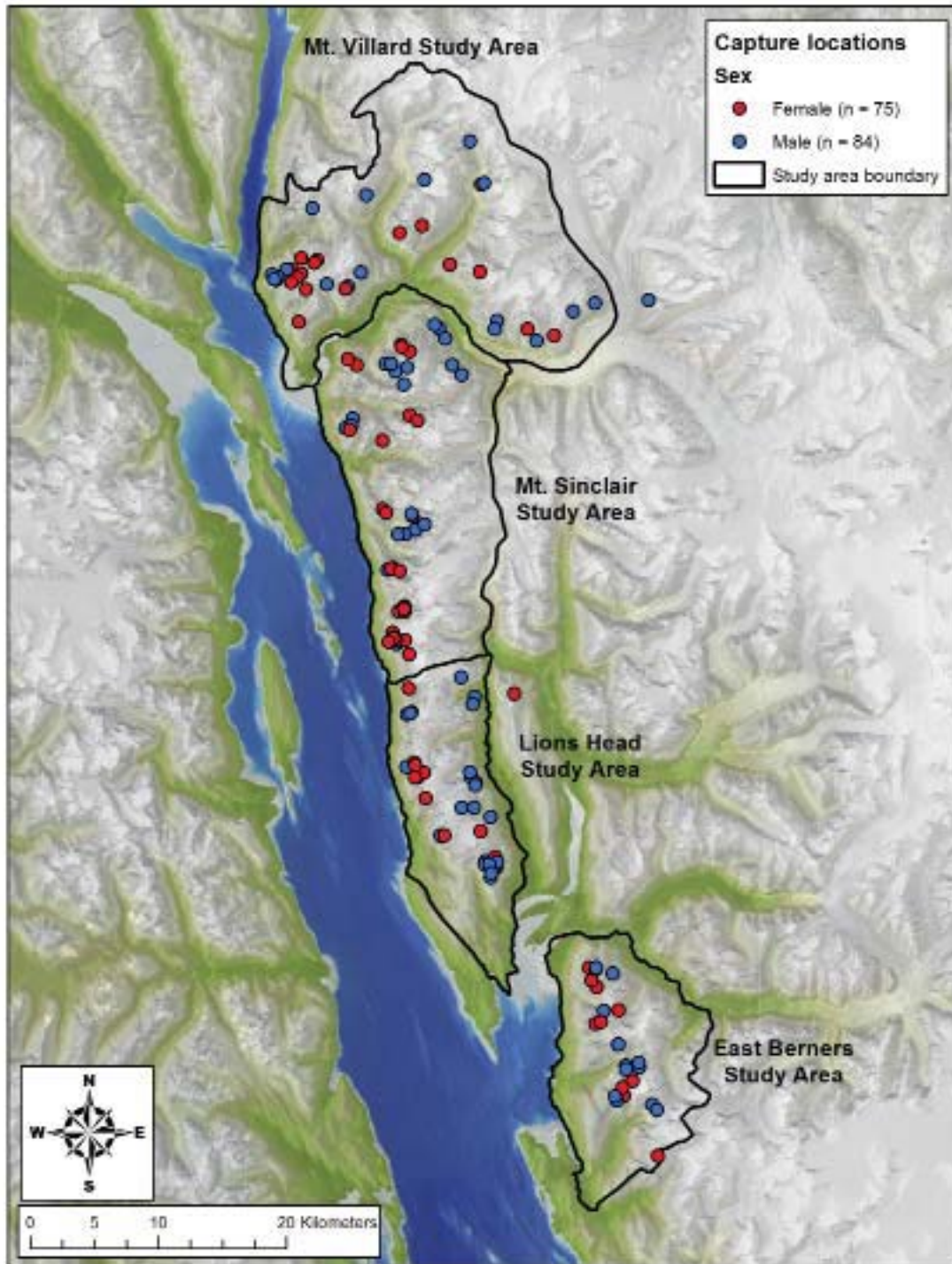


Figure D1: Locations of mountain goats captured and subsequently monitored in the Lynn Canal study area, 2005-2011



*This page intentionally left blank.*

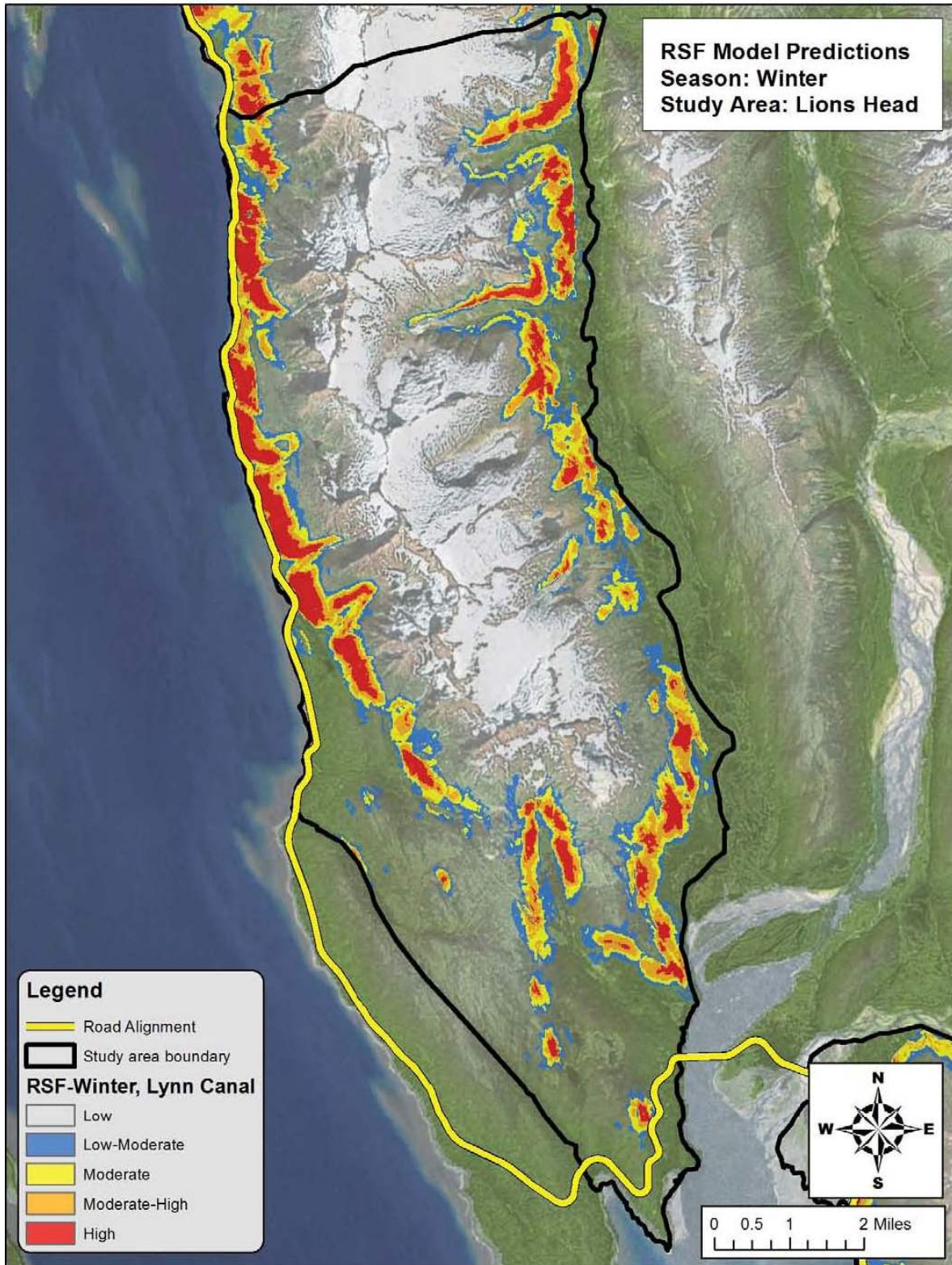


Figure D2: Map predicting relative probability of use for mountain goats during winter in the Lions Head study area

*This page intentionally left blank.*



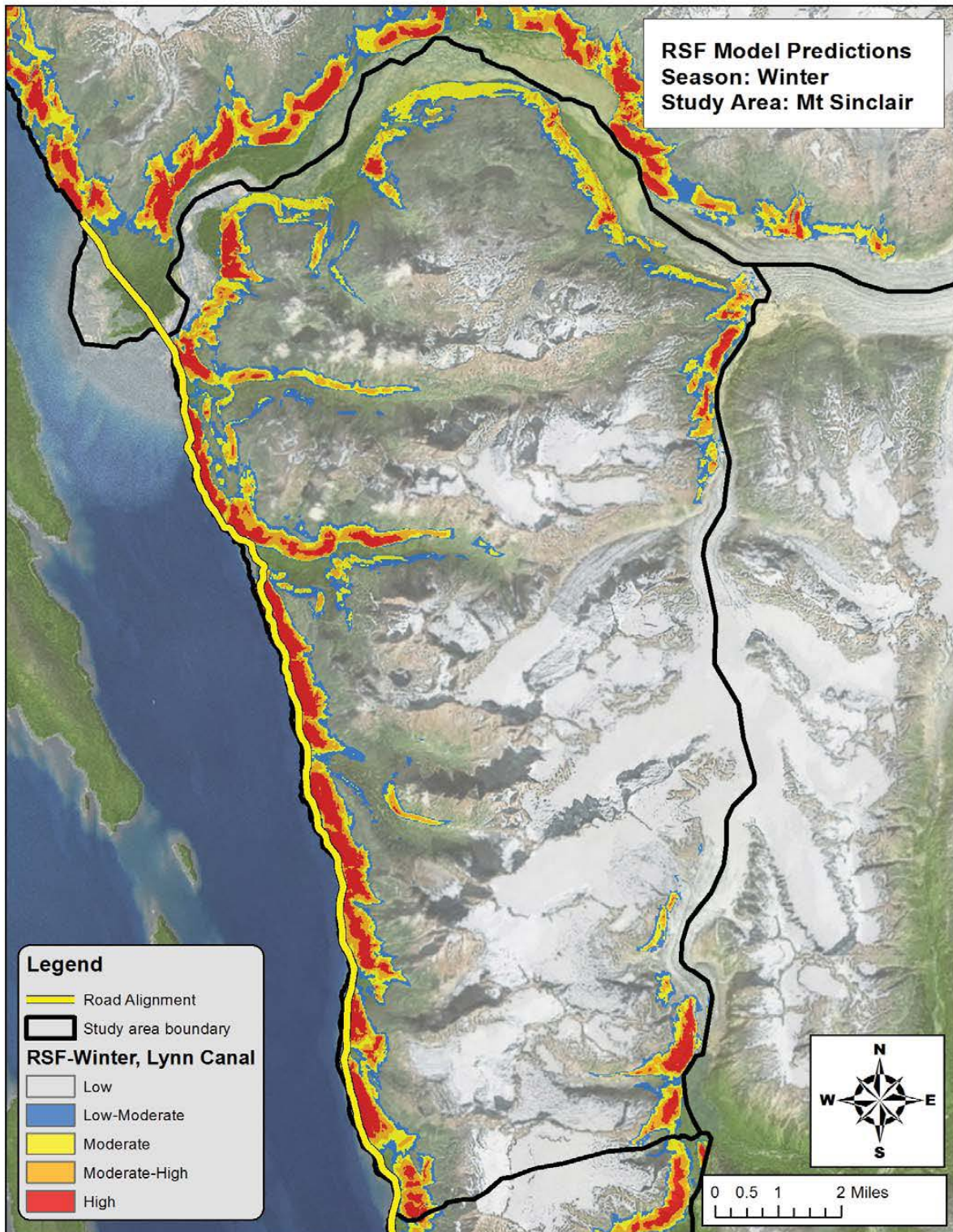
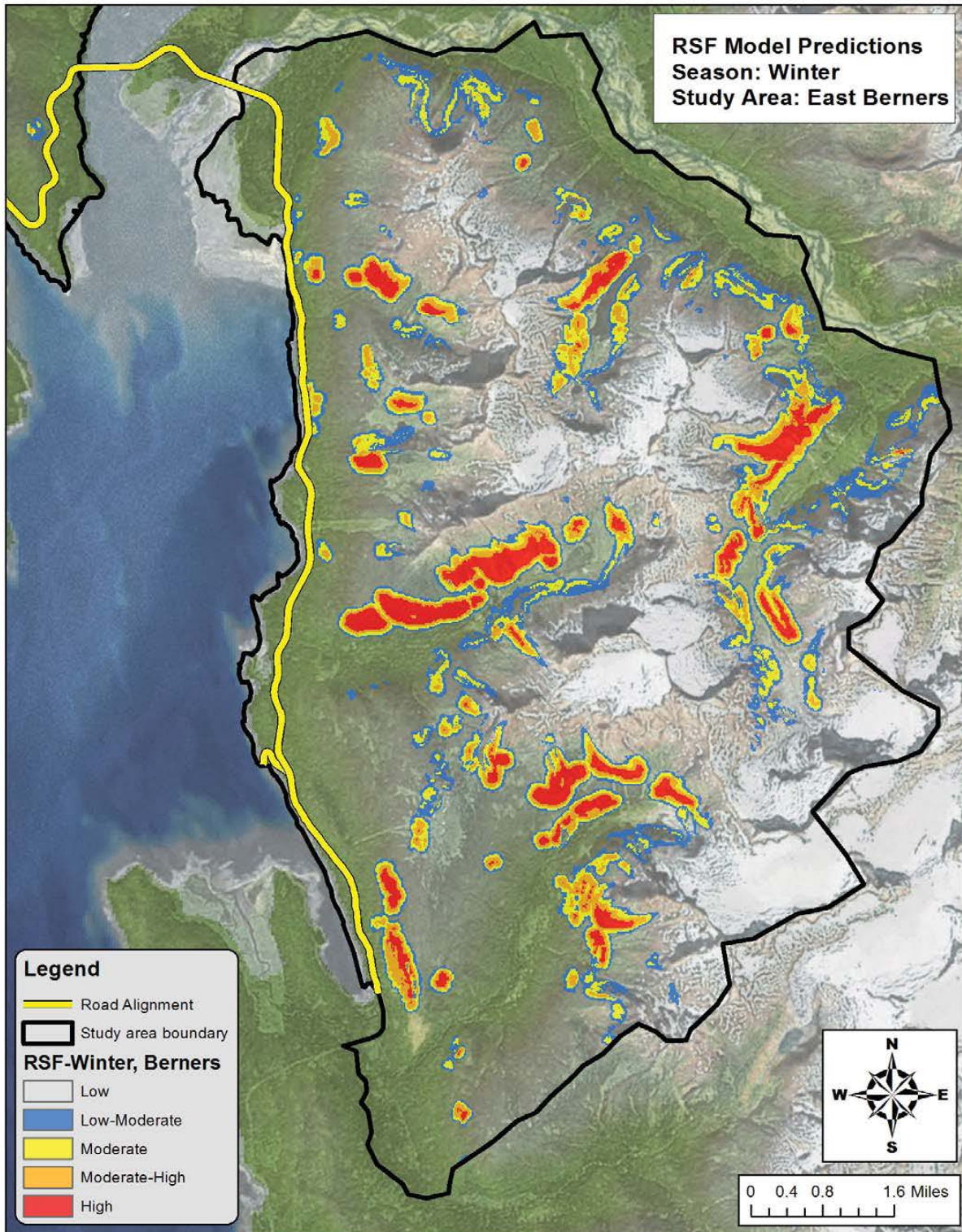


Figure D3: Map predicting relative probability of use for mountain goats during winter in the Mt. Sinclair study area

*This page intentionally left blank.*





**Figure D4: Map predicting relative probability of use for mountain goats during winter in the East Berners Bay study area**

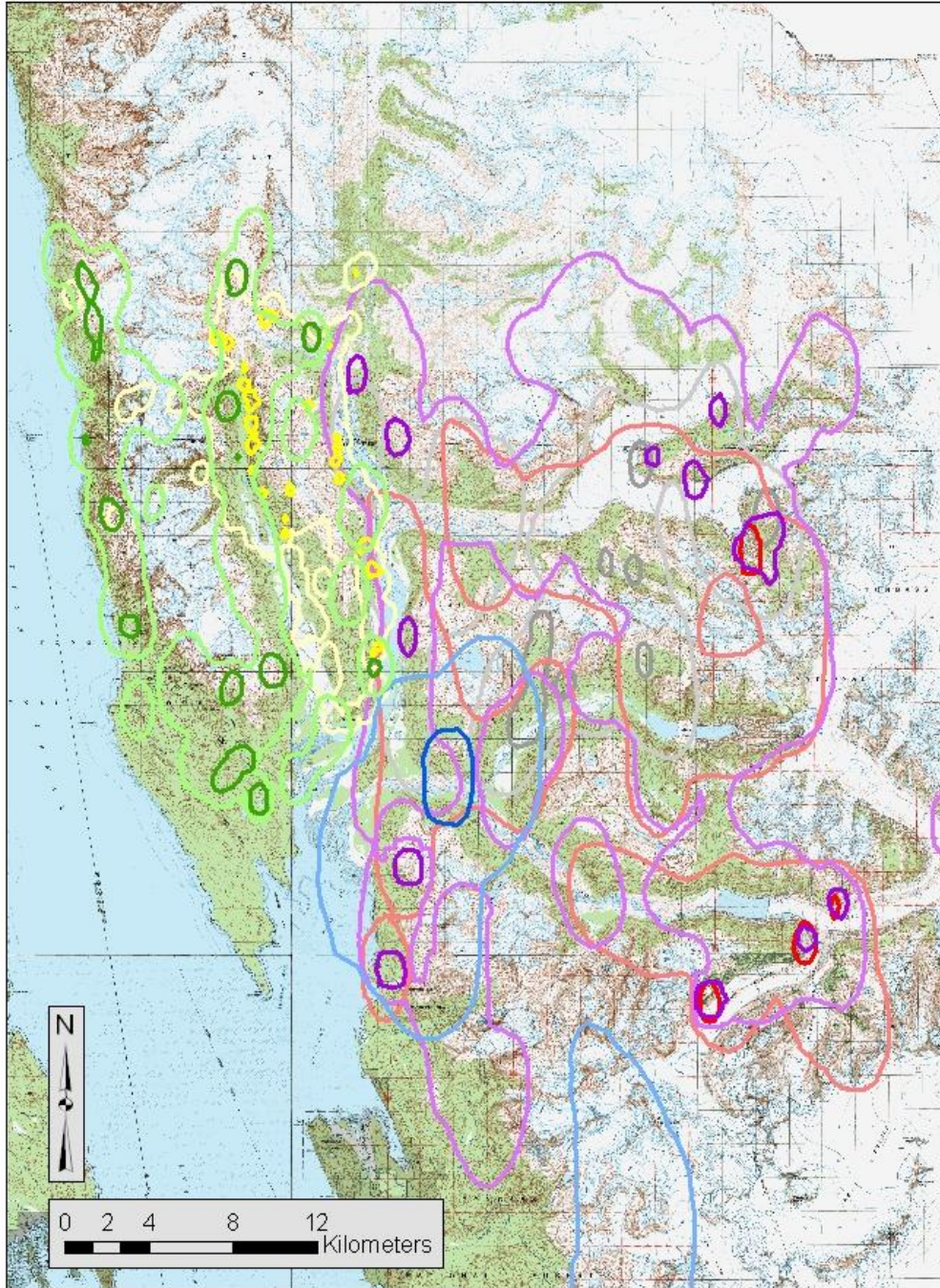
*This page intentionally left blank.*



**APPENDIX E**  
**WOLVERINE FIGURES**

Selected from Lewis et al. 2012

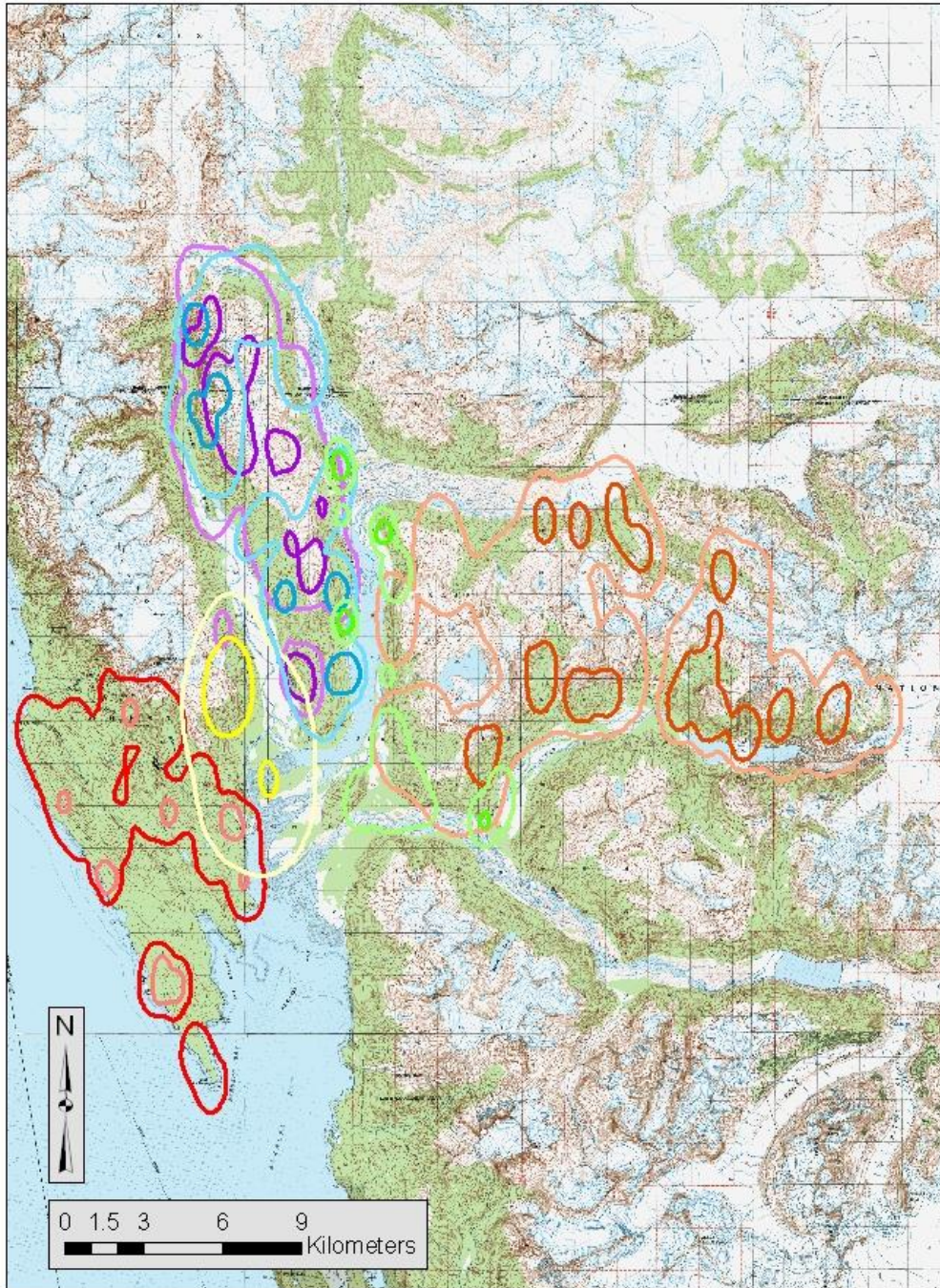
*This page intentionally left blank.*



**Figure E1. Use areas of 6 male wolverines in Berners Bay, Alaska. Colors indicate different animals: M1 = green; M2 = blue; M3 = yellow; M4 = purple; M5 = red; and, M7 = grey. Note, most of M2's use area is not shown as it is outside the Berners Bay study area.**

*This page intentionally left blank.*





**Figure E2. Use areas of 6 female wolverines in Berners Bay, Alaska. Colors indicate different animals: F1 = green; F2 = blue; F5 = yellow; F6 = purple; F7 = red; and, F8 = orange.**

*This page intentionally left blank.*