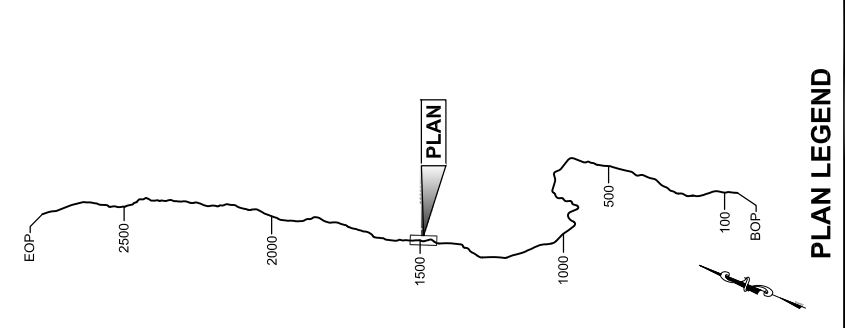


GEARY, NATE (DOT)
 APPENDUM NUMBER
 ATTACHMENT NUMBER

RECORD OF REVISIONS

NO.	DATE	DESCRIPTION

NO.	DATE	DESCRIPTION



PLAN LEGEND

CHECKED BY:

DESIGNED BY:

DRAWN BY:

STATE OF ALASKA
 DEPARTMENT OF TRANSPORTATION
 & PUBLIC FACILITIES
 SOUTHEAST REGION

JNU-EAST LYNN CANAL
 HIGHWAY ALTERNATIVE 2B
 PROJECT #71100

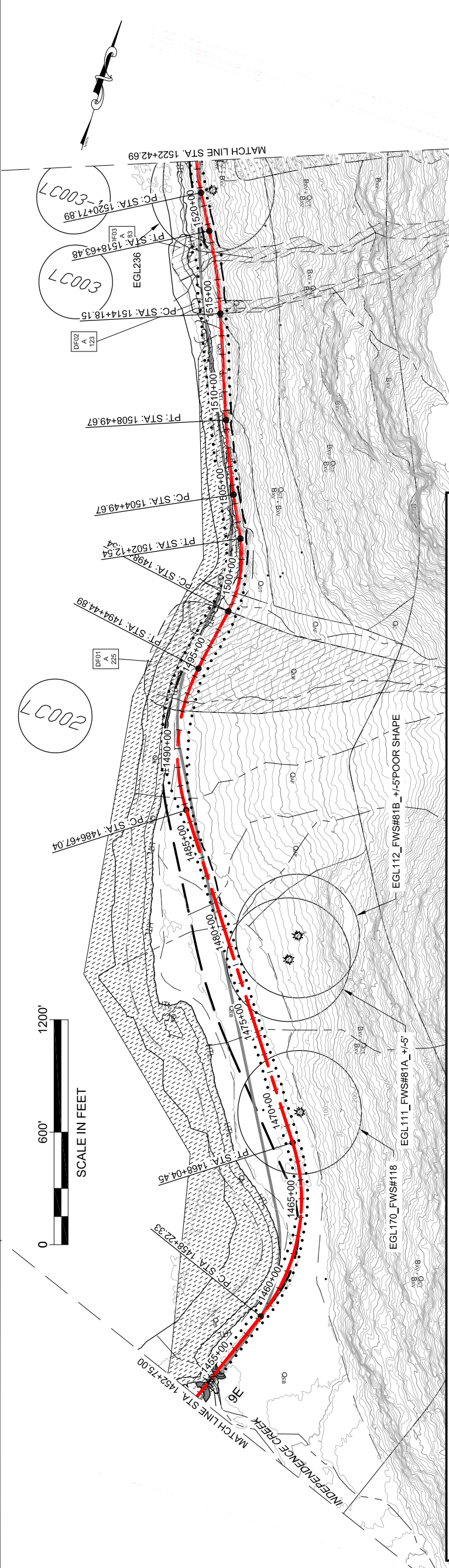
**2013 EIS
 PLAN VIEW**

PROJECT DESIGNATION
71100

STATE	YEAR
ALASKA	2013

SHEET NUMBER
EL20

TOTAL SHEETS
38

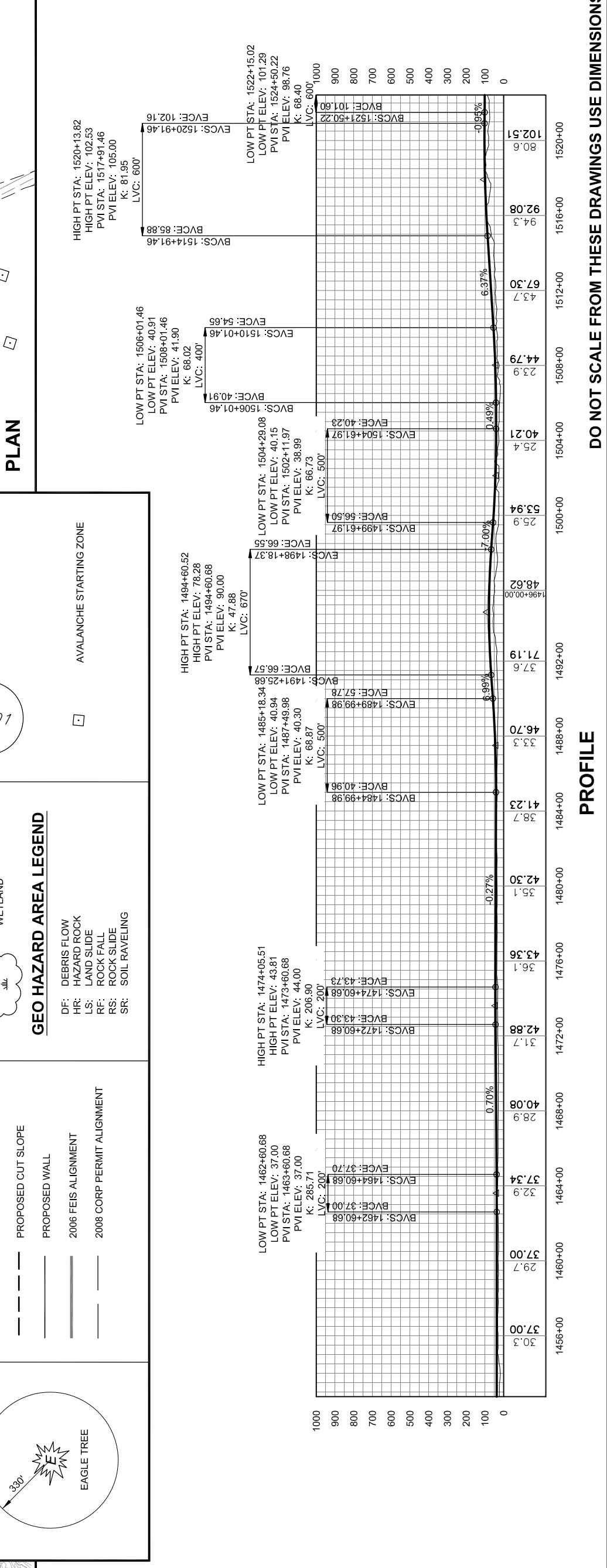
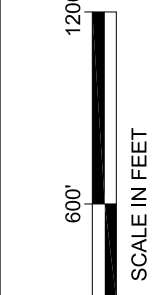


LEGEND

	CURRENT ALIGNMENT		BRIDGES
	PROPOSED FILL SLOPE		WETLAND
	PROPOSED CUT SLOPE		
	PROPOSED WALL		
	2006 FEIS ALIGNMENT		
	2008 CORP PERMIT ALIGNMENT		

GEO HAZARD AREA LEGEND

DF: DEBRIS FLOW
 HR: HAZARD ROCK
 LS: LAND SLIDE
 RF: ROCK FALL
 RS: ROCK SLIDE
 SR: SOIL RAVELING

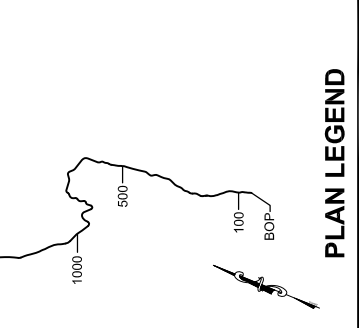


DO NOT SCALE FROM THESE DRAWINGS USE DIMENSIONS

PROFILE

This page intentionally left blank.

RECORD OF REVISIONS	
NO.	DESCRIPTION



PLAN LEGEND

CHECKED BY:

DESIGNED BY:

DRAWN BY:

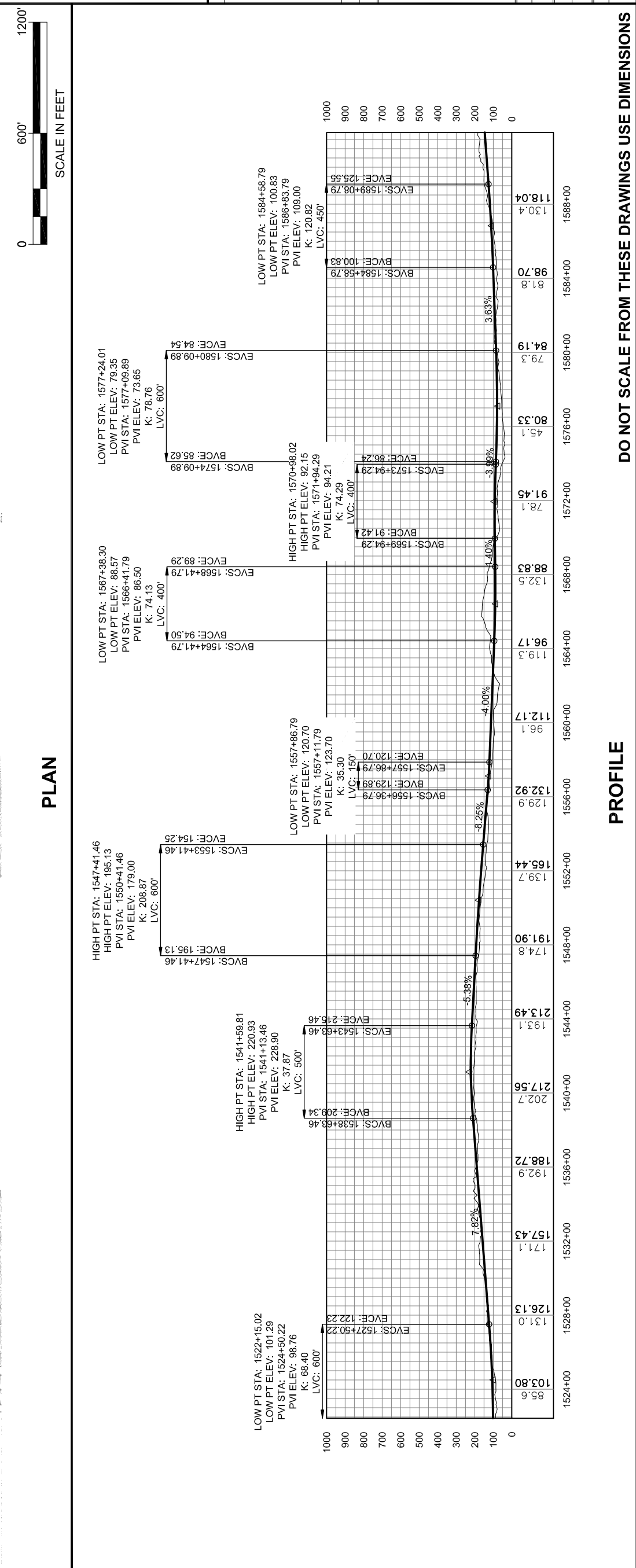
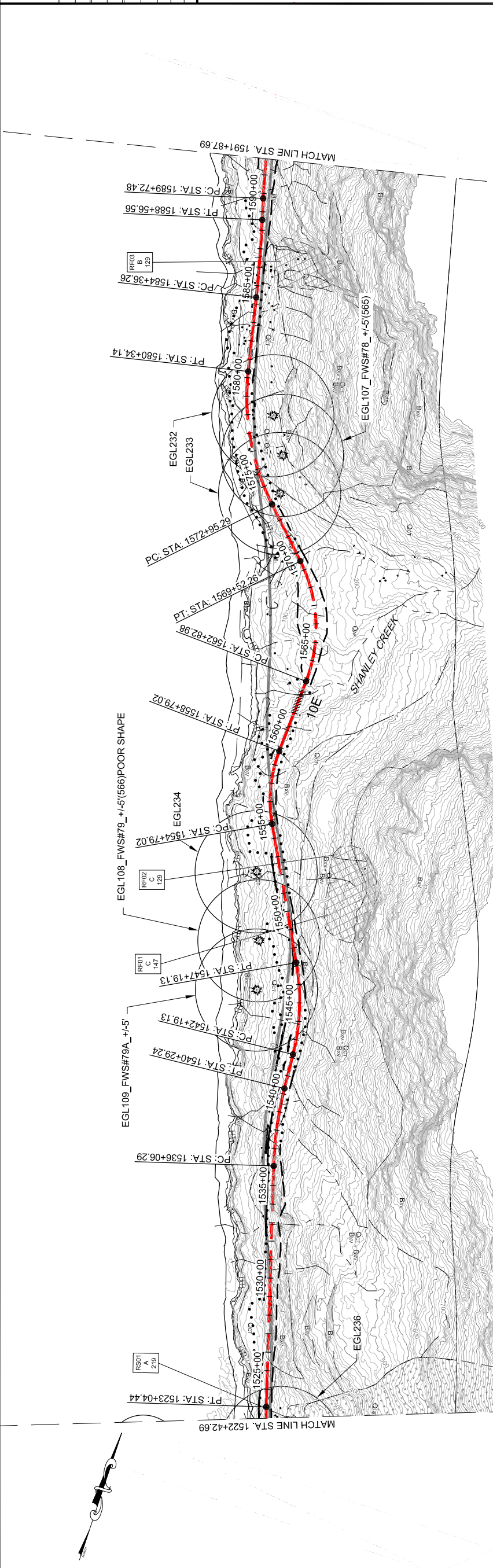
STATE OF ALASKA
 DEPARTMENT OF TRANSPORTATION
 & PUBLIC FACILITIES
 SOUTHEAST REGION

**JNU-EAST LYNN CANAL
 HIGHWAY ALTERNATIVE 2B
 PROJECT #71100**

**2013 EIS
 PLAN VIEW**

PROJECT DESIGNATION
71100

STATE	YEAR
ALASKA	2013
SHEET NUMBER	TOTAL SHEETS
EL21	38



This page intentionally left blank.

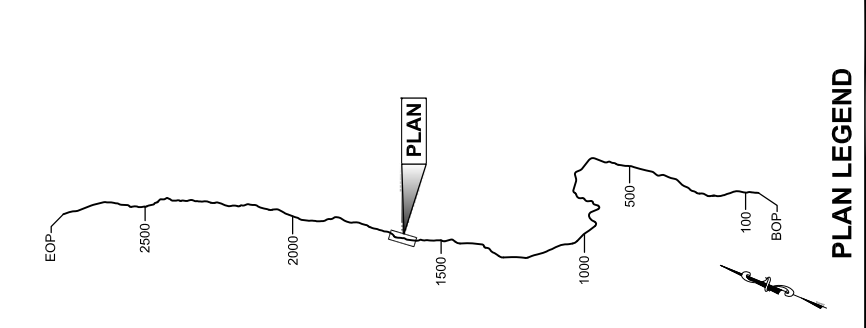
PATH: C:\UNITS\10\DRW\10-2013 EIS DWG\SR7100_2013 EIS
 EAST LYNN PLANS.DWG

GEARY, NATE (DOT)
 TAB: EL22.dwg, October 04, 2013 12:46:56 PM

APPENDUM NUMBER

ATTACHMENT NUMBER

RECORD OF REVISIONS	
NO.	DESCRIPTION



CHECKED BY:

DESIGNED BY:

DRAWN BY:

STATE OF ALASKA
 DEPARTMENT OF TRANSPORTATION
 & PUBLIC FACILITIES
 SOUTHEAST REGION

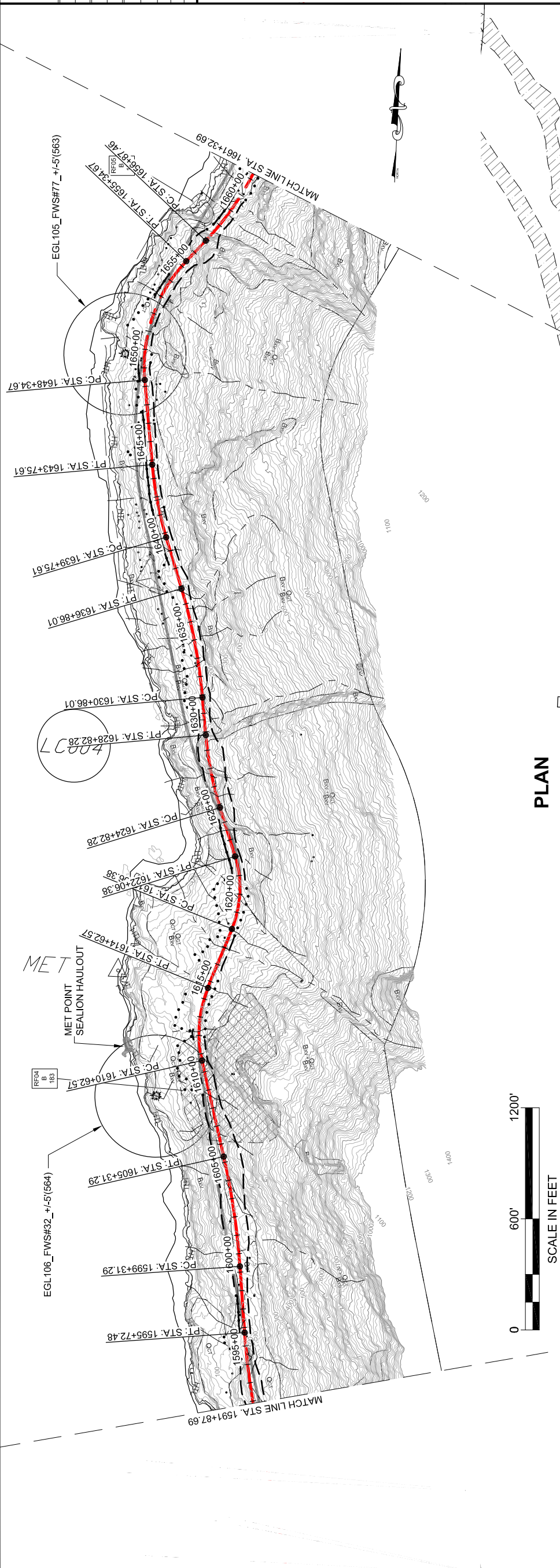
JNU-EAST LYNN CANAL
 HIGHWAY ALTERNATIVE 2B
 PROJECT #71100

**2013 EIS
 PLAN VIEW**

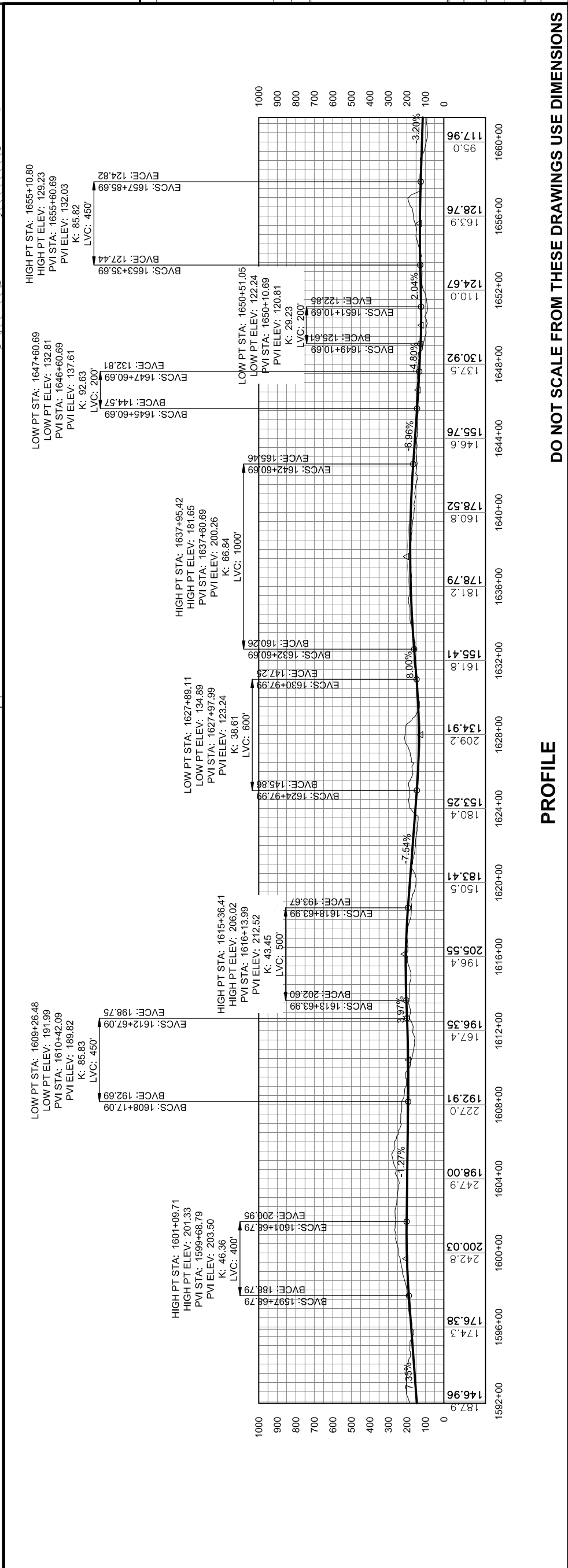
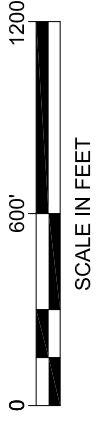
PROJECT DESIGNATION
71100

STATE	YEAR
ALASKA	2013

SHEET NUMBER	TOTAL SHEETS
EL22	38



PLAN

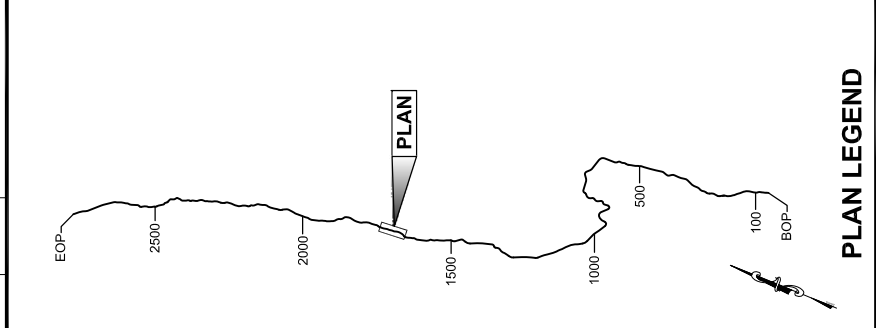


PROFILE

DO NOT SCALE FROM THESE DRAWINGS USE DIMENSIONS

This page intentionally left blank.

GEARY, NATE (DOT)	APPENDIX NUMBER	
TAB: EL23.dwg, October 04, 2013 12:50:27 PM	ATTACHMENT NUMBER	
RECORD OF REVISIONS		
NO.	DATE	DESCRIPTION



CHECKED BY:

DESIGNED BY:

DRAWN BY:

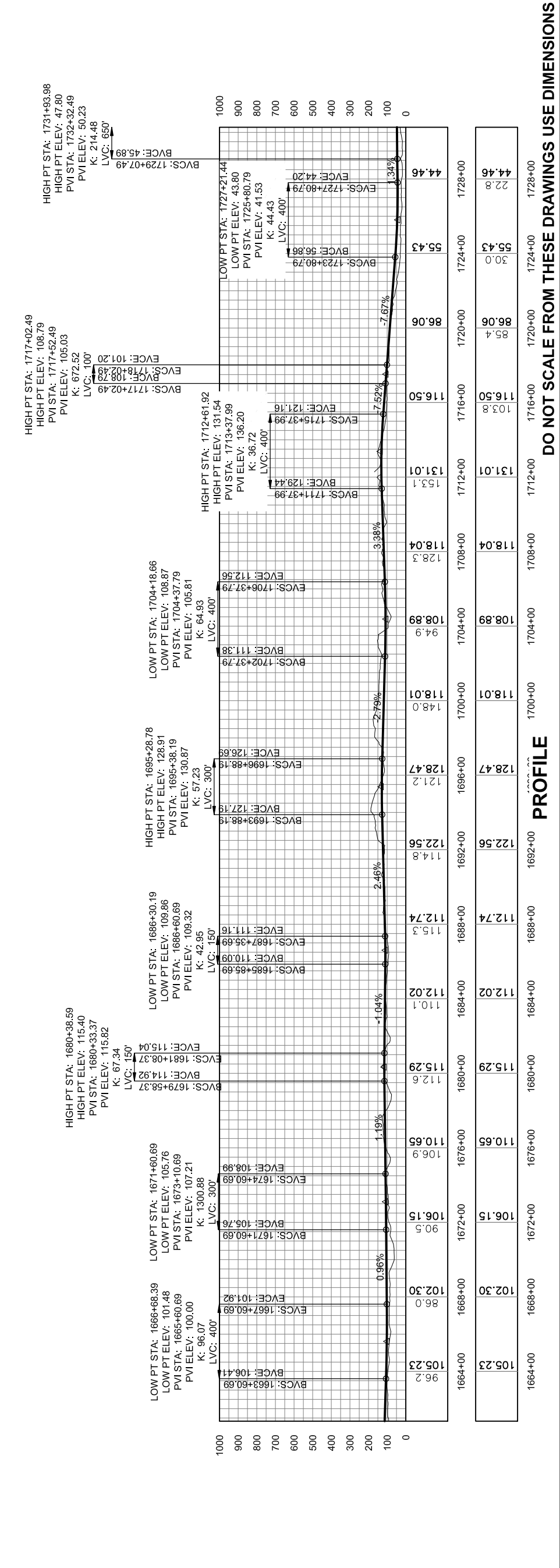
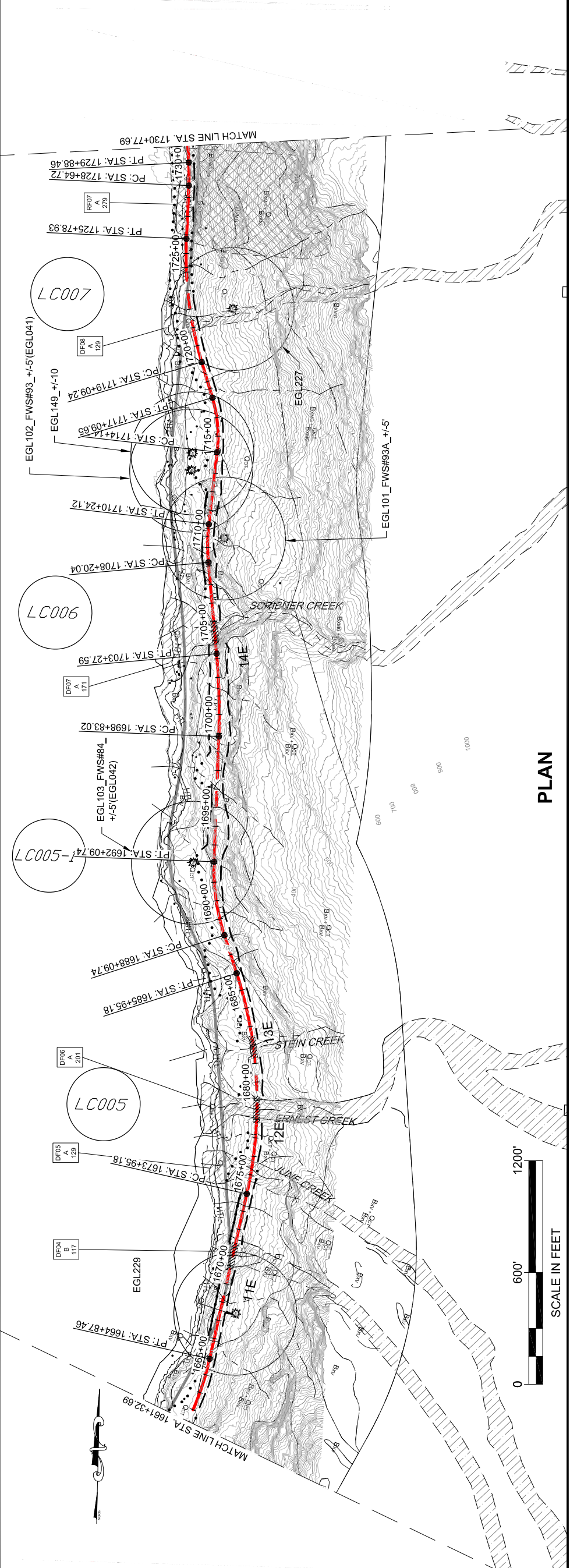
STATE OF ALASKA
 DEPARTMENT OF TRANSPORTATION
 & PUBLIC FACILITIES
 SOUTHEAST REGION

JNU-EAST LYNN CANAL
 HIGHWAY ALTERNATIVE 2B
 PROJECT #71100

**2013 EIS
 PLAN VIEW**

PROJECT DESIGNATION
71100

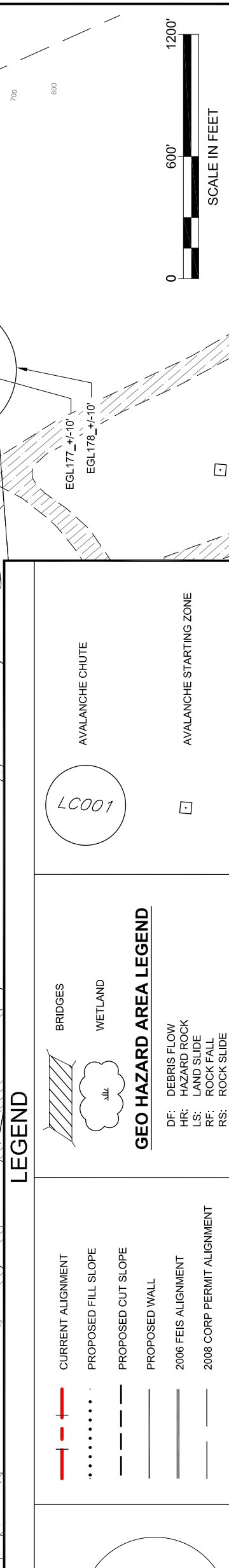
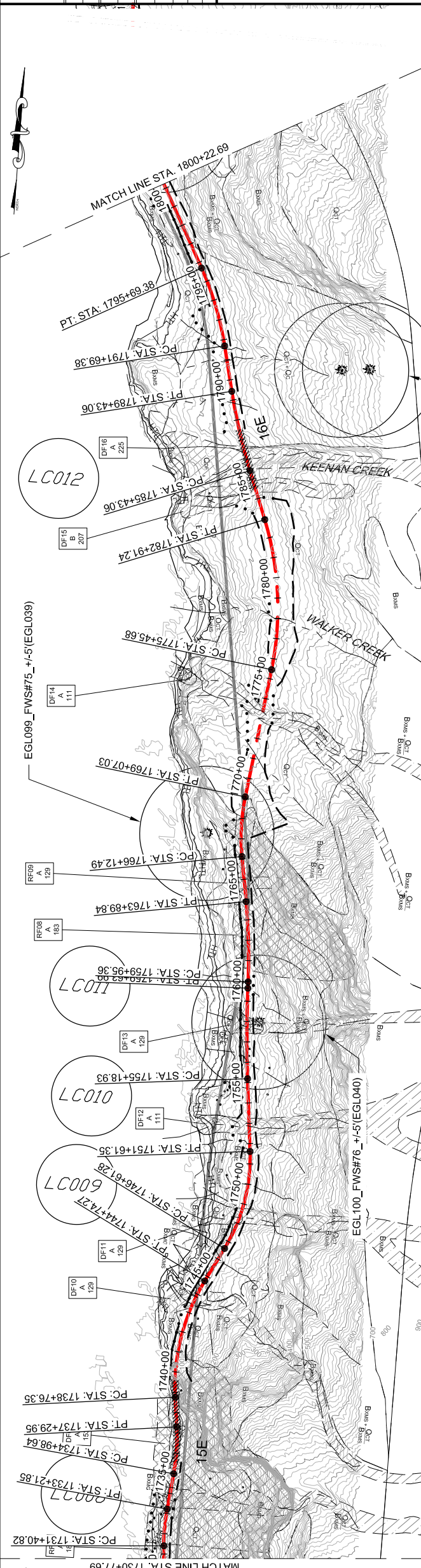
STATE	YEAR	TOTAL SHEETS
ALASKA	2013	38
SHEET NUMBER	EL23	



DO NOT SCALE FROM THESE DRAWINGS USE DIMENSIONS

PROFILE

This page intentionally left blank.



LEGEND

	CURRENT ALIGNMENT
	PROPOSED FILL SLOPE
	PROPOSED CUT SLOPE
	PROPOSED WALL
	2006 FEIS ALIGNMENT
	2008 CORP PERMIT ALIGNMENT

GEO HAZARD AREA LEGEND

	BRIDGES
	WETLAND
	DEBRIS FLOW
	HAZARD ROCK
	LAND SLIDE
	ROCK FALL
	ROCK SLIDE
	SOIL RAVELING

PLAN LEGEND

CHECKED BY:

DESIGNED BY:

DRAWN BY:

STATE OF ALASKA
 DEPARTMENT OF TRANSPORTATION
 & PUBLIC FACILITIES
 SOUTHEAST REGION

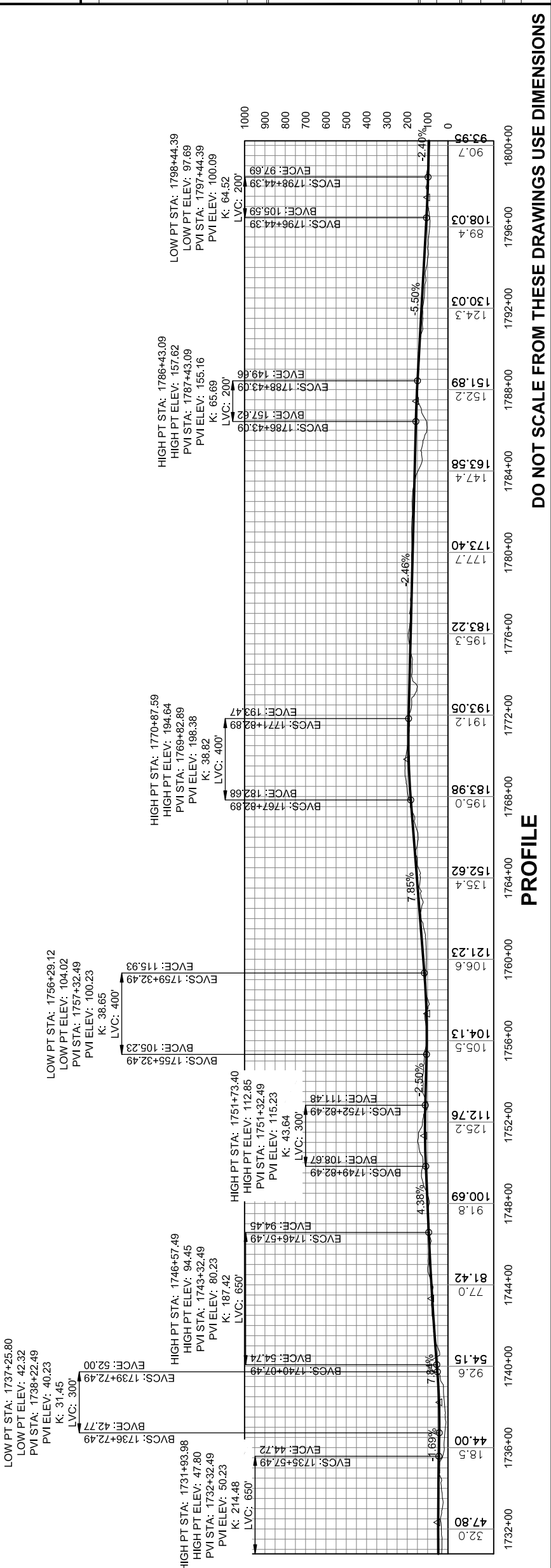
JNU-EAST LYNN CANAL
 HIGHWAY ALTERNATIVE 2B
 PROJECT #71100

2012 EIS
 PLAN VIEW

PROJECT DESIGNATION
 71100

STATE	YEAR	TOTAL SHEETS
ALASKA	2012	38

SHEET NUMBER
 EL24



PROFILE

DO NOT SCALE FROM THESE DRAWINGS USE DIMENSIONS

This page intentionally left blank.

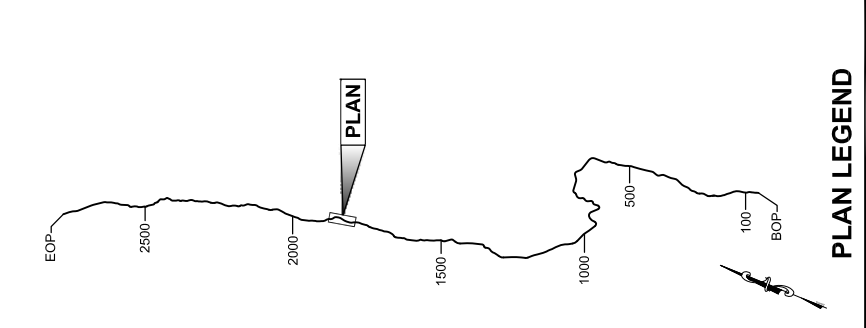
PATH: C:\UNITS\10\DRS\10-2013 EIS DWGSET\100_2013 EIS
 EAST LYNN PLANS.DWG

GEARY, NATE (DOT)
 TAB: EL22.dwg, October 04, 2013 12:51:36 PM

APPENDUM NUMBER
 ATTACHMENT NUMBER

RECORD OF REVISIONS

NO.	DATE	DESCRIPTION



CHECKED BY:

DESIGNED BY:

DRAWN BY:

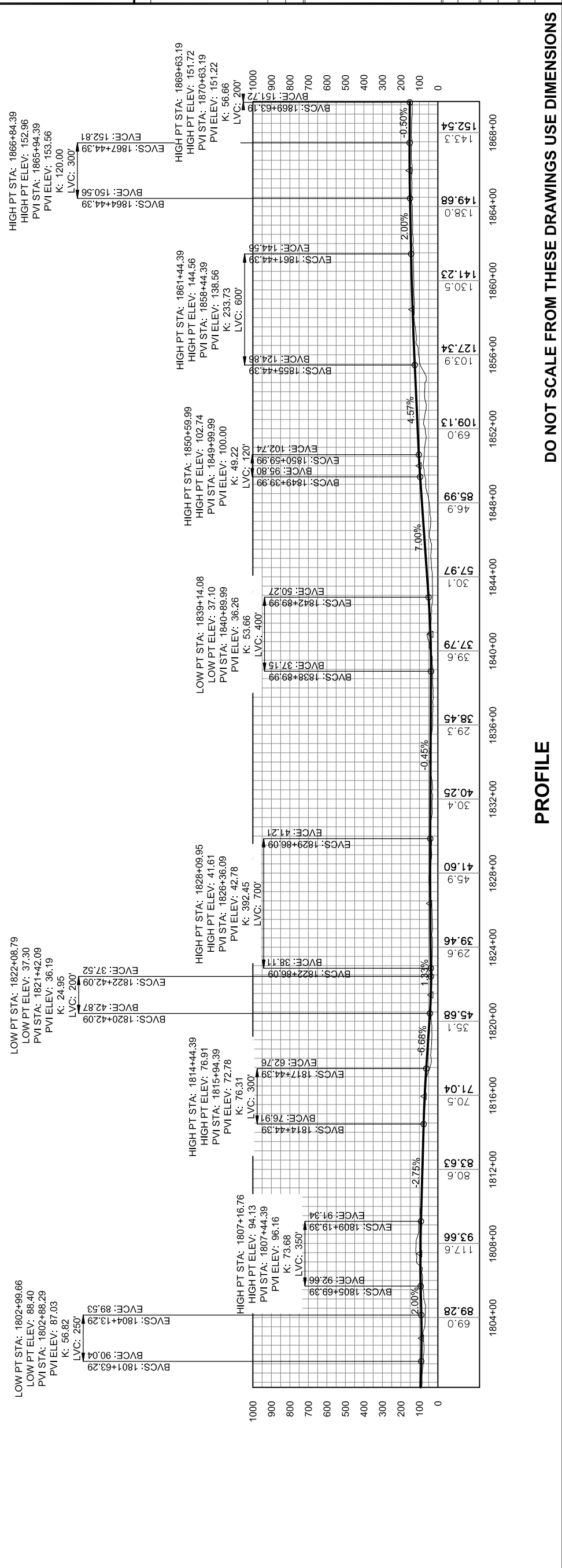
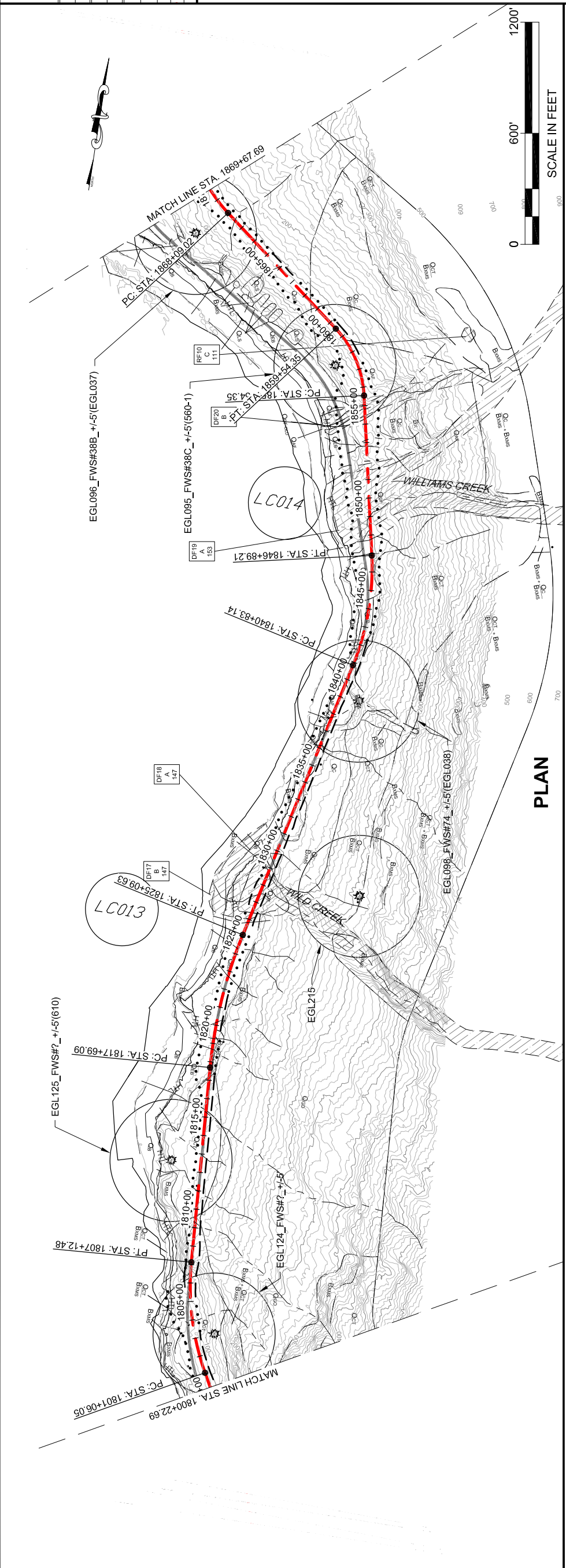
STATE OF ALASKA
 DEPARTMENT OF TRANSPORTATION
 & PUBLIC FACILITIES
 SOUTHEAST REGION

JNU-EAST LYNN CANAL
 HIGHWAY ALTERNATIVE 2B
 PROJECT #71100

**2013 EIS
 PLAN VIEW**

PROJECT DESIGNATION
71100

STATE	YEAR
ALASKA	2013
SHEET NUMBER	TOTAL SHEETS
EL25	38



DO NOT SCALE FROM THESE DRAWINGS USE DIMENSIONS

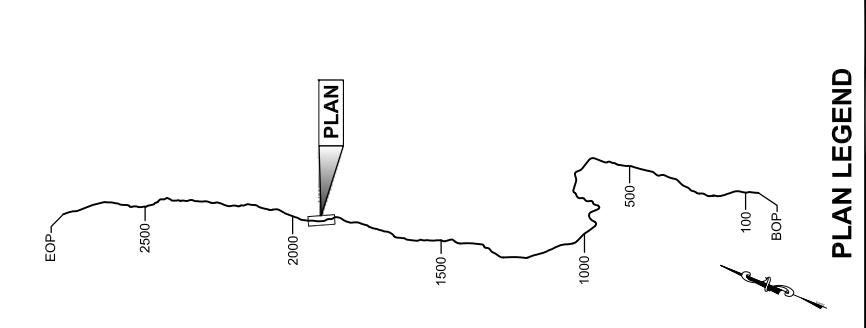
PROFILE

This page intentionally left blank.

PATH: C:\UNITS\10\DRS\10-2012 EIS DWGSET\1100_2013 EIS
 GEARY, NATE (DOT)
 TAB: EL2.dwg, October 04, 2013 12:52:07 PM

RECORD OF REVISIONS		
NO.	DATE	DESCRIPTION

APPENDIX NUMBER
 ATTACHMENT NUMBER



DRAFT

CHECKED BY:

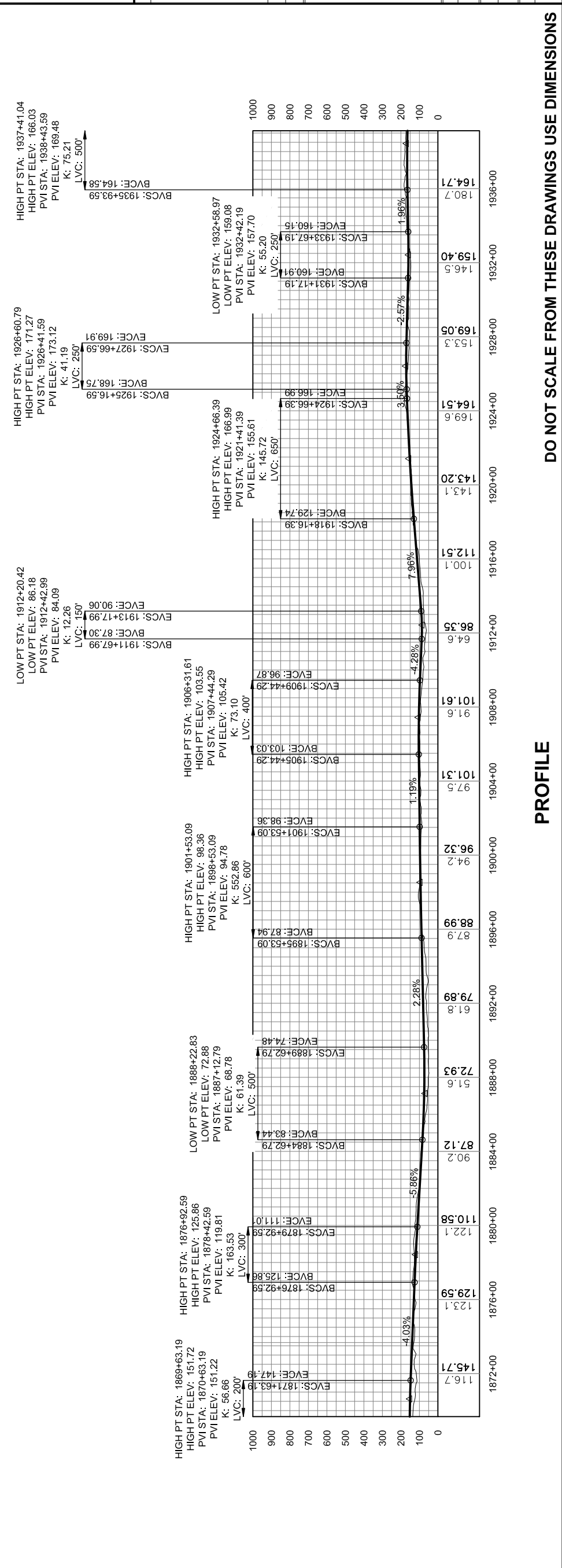
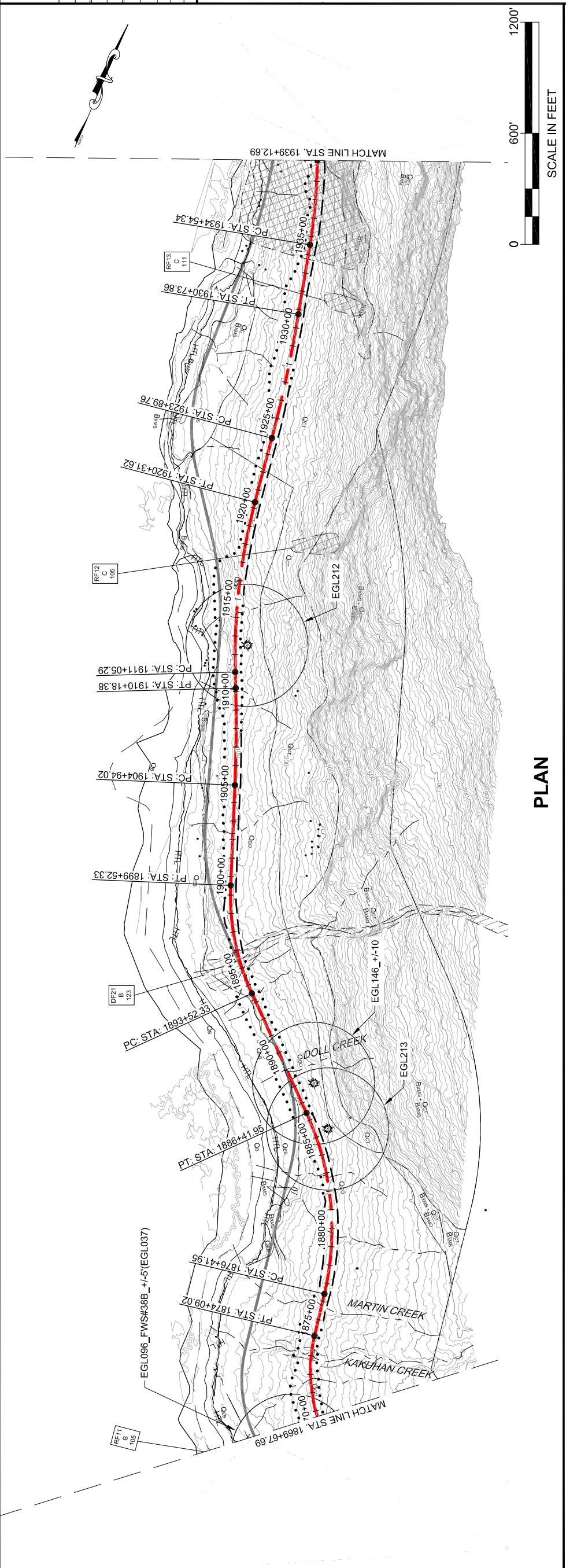
DESIGNED BY:
 DRAWN BY:

STATE OF ALASKA
 DEPARTMENT OF TRANSPORTATION
 & PUBLIC FACILITIES
 SOUTHEAST REGION

JNU-EAST LYNN CANAL
 HIGHWAY ALTERNATIVE 2B
 PROJECT #71100

2013 EIS
 PLAN VIEW

PROJECT DESIGNATION	71100
STATE	ALASKA
YEAR	2013
SHEET NUMBER	EL26
TOTAL SHEETS	38



DO NOT SCALE FROM THESE DRAWINGS USE DIMENSIONS

PROFILE

This page intentionally left blank.

This page intentionally left blank.