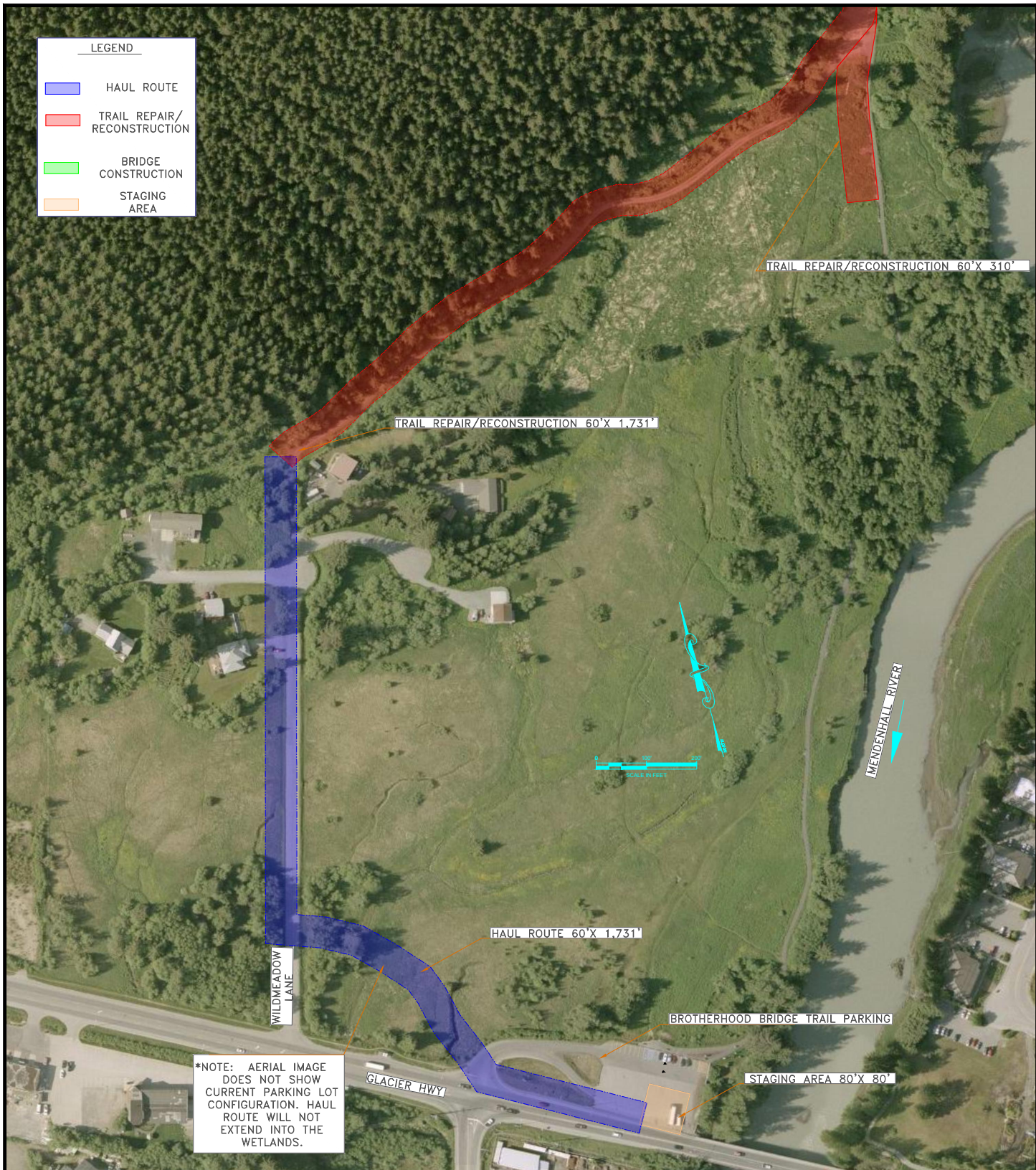


AREA OF POTENTIAL EFFECT

ADJACENT PROPERTY OWNERS:
 -CITY AND BOROUGH OF JUNEAU
 -UNIVERSITY OF ALASKA
 -SOUTHEAST ALASKA LAND TRUST

APPLICATION BY:
 ALASKA STATE DEPT. OF TRANSPORTATION
 AND PUBLIC FACILITIES
 DESIGN & ENGINEERING SERVICES DIVISION
 SOUTHEAST REGION

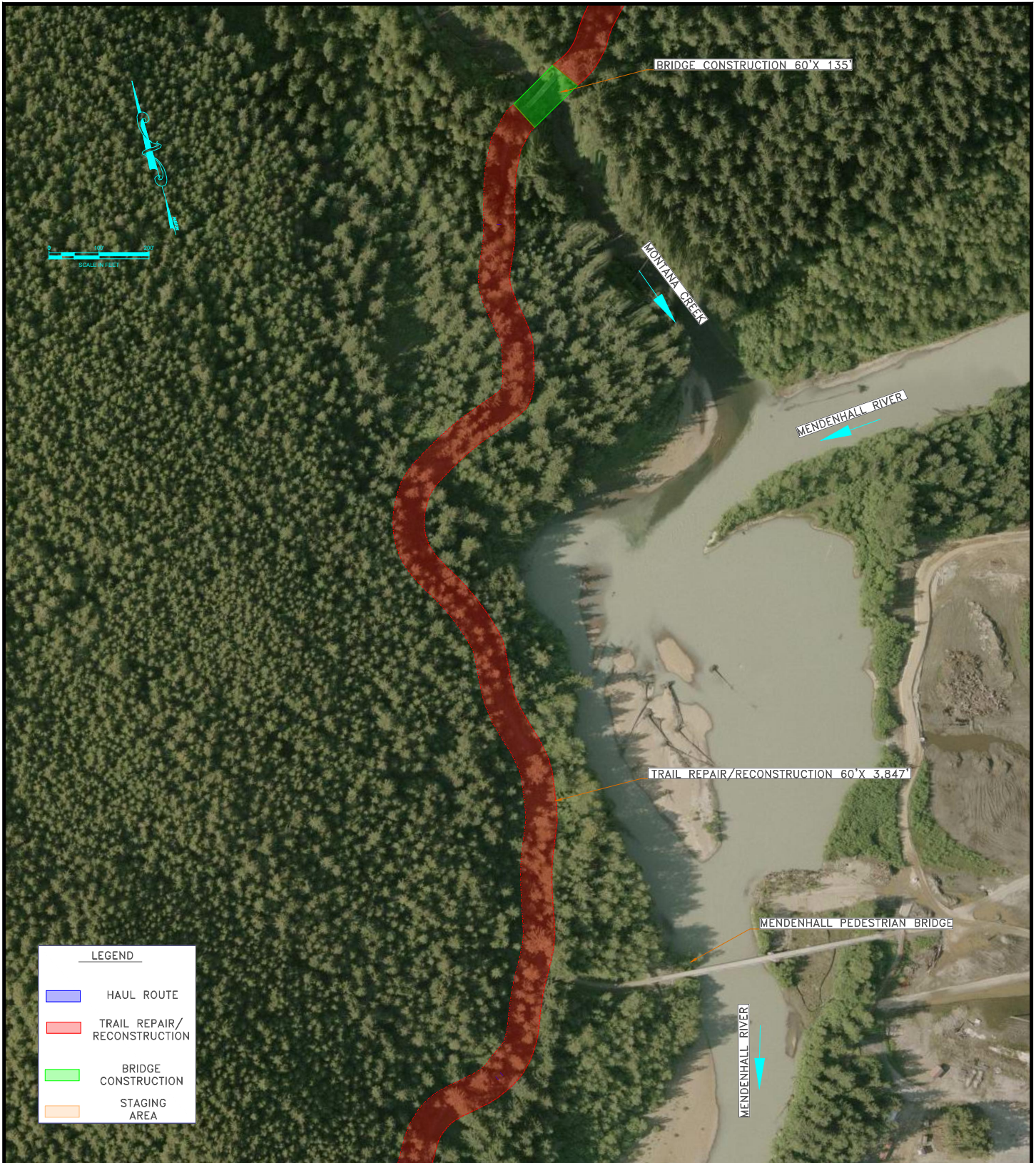
JNU KAXDIGOOWU HEEN DEI IMP
 (BROTHERHOOD BRIDGE TRAIL IMP)
 AT: JUNEAU, ALASKA
 SEC. 24&25, T40S, R65E
 JUNEAU B-2 QUADRANGLE
 COPPER RIVER MERIDIAN, ALASKA
 DATE: 4/7/2022 SHEET 1 OF 12



ADJACENT PROPERTY OWNERS:
 -CITY AND BOROUGH OF JUNEAU
 -UNIVERSITY OF ALASKA
 -SOUTHEAST ALASKA LAND TRUST

APPLICATION BY:
 ALASKA STATE DEPT. OF TRANSPORTATION
 AND PUBLIC FACILITIES
 DESIGN & ENGINEERING SERVICES DIVISION
 SOUTHEAST REGION

JNU KAXDIGOOWU HEEN DEI IMP
 (BROTHERHOOD BRIDGE TRAIL IMP)
AT: JUNEAU, ALASKA
 SEC. 24&25, T40S, R65E
 JUNEAU B-2 QUADRANGLE
 COPPER RIVER MERIDIAN, ALASKA
 DATE: 4/7/2022 SHEET 2 OF 12





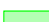

LEGEND	
	HAUL ROUTE
	TRAIL REPAIR/RECONSTRUCTION
	BRIDGE CONSTRUCTION
	STAGING AREA

ADJACENT PROPERTY OWNERS:
 -CITY AND BOROUGH OF JUNEAU
 -UNIVERSITY OF ALASKA
 -SOUTHEAST ALASKA LAND TRUST

APPLICATION BY:
 ALASKA STATE DEPT. OF TRANSPORTATION
 AND PUBLIC FACILITIES
 DESIGN & ENGINEERING SERVICES DIVISION
 SOUTHEAST REGION

JNU KAXDIGOOWU HEEN DEI IMP
 (BROTHERHOOD BRIDGE TRAIL IMP)
 AT: JUNEAU, ALASKA
 SEC. 24&25, T40S, R65E
 JUNEAU B-2 QUADRANGLE
 COPPER RIVER MERIDIAN, ALASKA
 DATE: 4/7/2022 SHEET 3 OF 12

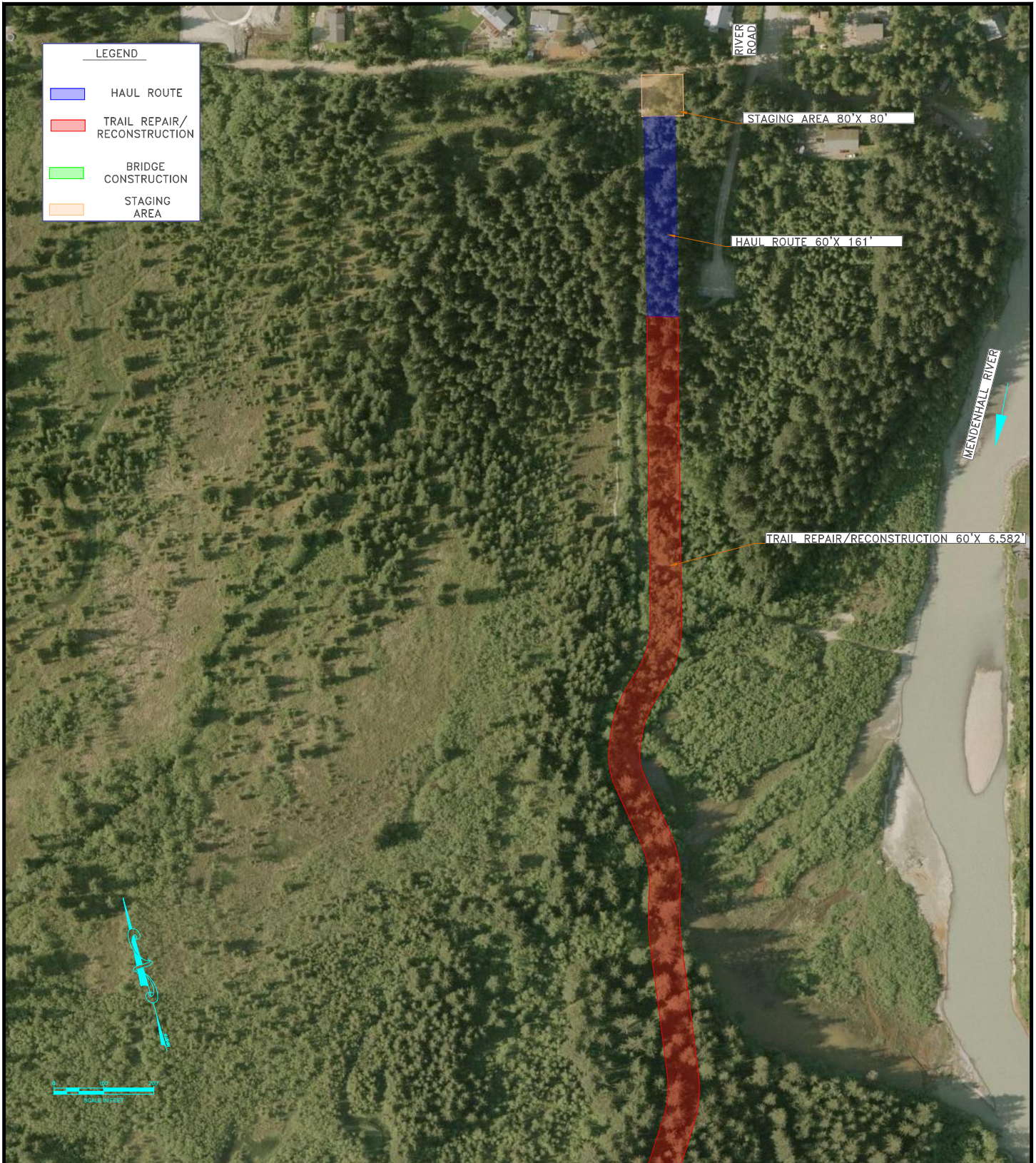


LEGEND	
	HAUL ROUTE
	TRAIL REPAIR/RECONSTRUCTION
	BRIDGE CONSTRUCTION
	STAGING AREA

ADJACENT PROPERTY OWNERS:
 -CITY AND BOROUGH OF JUNEAU
 -UNIVERSITY OF ALASKA
 -SOUTHEAST ALASKA LAND TRUST

APPLICATION BY:
 ALASKA STATE DEPT. OF TRANSPORTATION
 AND PUBLIC FACILITIES
 DESIGN & ENGINEERING SERVICES DIVISION
 SOUTHEAST REGION

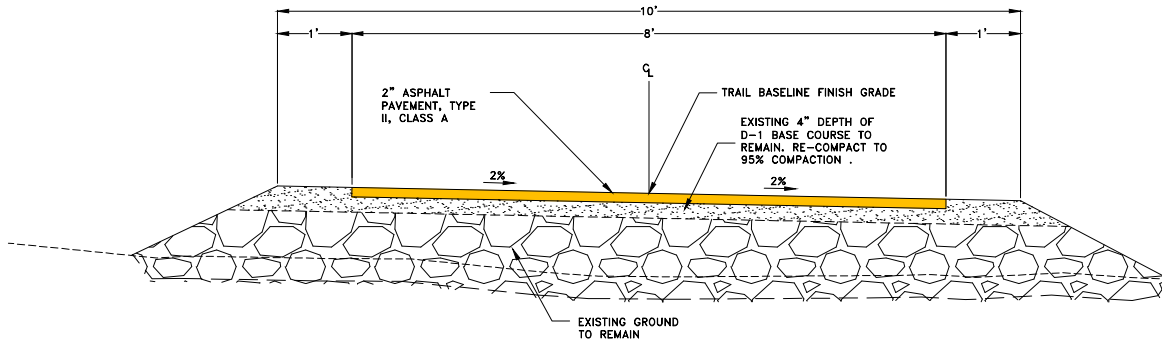
JNU KAXDIGOOWU HEEN DEI IMP
 (BROTHERHOOD BRIDGE TRAIL IMP)
AT: JUNEAU, ALASKA
 SEC. 24&25, T40S, R65E
 JUNEAU B-2 QUADRANGLE
 COPPER RIVER MERIDIAN, ALASKA
 DATE: 4/7/2022 SHEET 4 OF 12



ADJACENT PROPERTY OWNERS:
 -CITY AND BOROUGH OF JUNEAU
 -UNIVERSITY OF ALASKA
 -SOUTHEAST ALASKA LAND TRUST

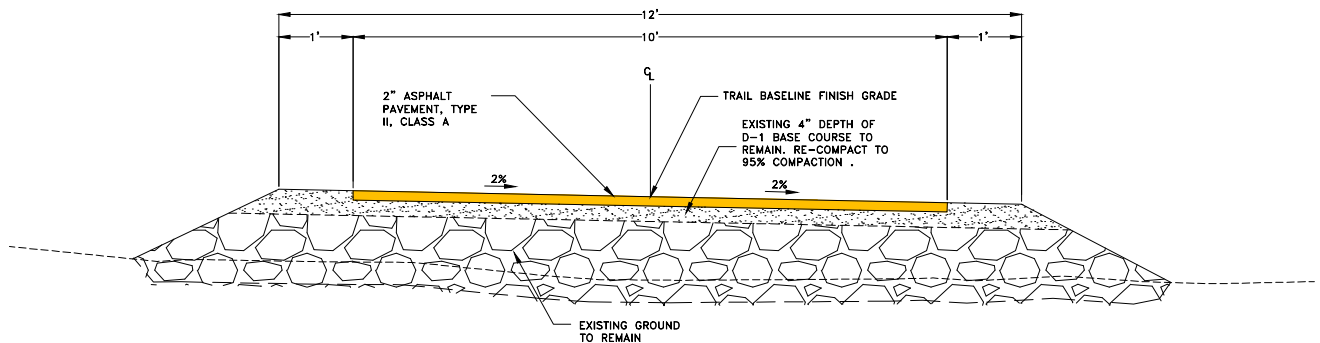
APPLICATION BY:
 ALASKA STATE DEPT. OF TRANSPORTATION
 AND PUBLIC FACILITIES
 DESIGN & ENGINEERING SERVICES DIVISION
 SOUTHEAST REGION

JNU KAXDIGOOWU HEEN DEI IMP
 (BROTHERHOOD BRIDGE TRAIL IMP)
AT: JUNEAU, ALASKA
 SEC. 24&25, T40S, R65E
 JUNEAU B-2 QUADRANGLE
 COPPER RIVER MERIDIAN, ALASKA
 DATE: 4/7/2022 SHEET 5 OF 12



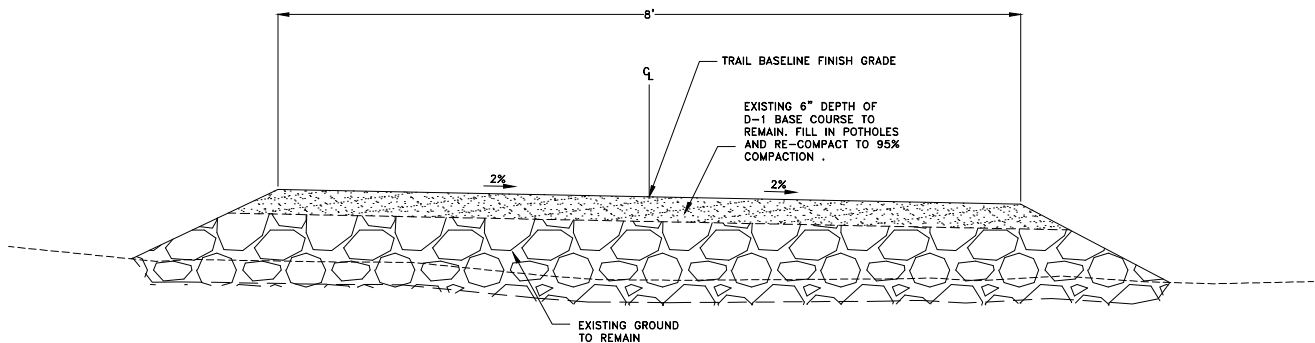
1
B1 8' ASPHALT TYPICAL TRAIL SECTION
SCALE: NOT TO SCALE

STATIONS:
32+96 TO 42+60
51+60 TO 122+78
TRANSITION FROM 8' WIDE AT STA. 42+60 TO 10' WIDE AT STA. 42+70.



2
B1 10' ASPHALT TYPICAL TRAIL SECTION
SCALE: NOT TO SCALE

STATIONS:
42+70 TO 51+50
TRANSITION FROM 10' WIDE AT STA. 51+50 TO 8' WIDE AT STA. 51+60.



3
B1 8' GRAVEL TYPICAL TRAIL SECTION
SCALE: NOT TO SCALE

STATIONS:
18+75 TO 32+96

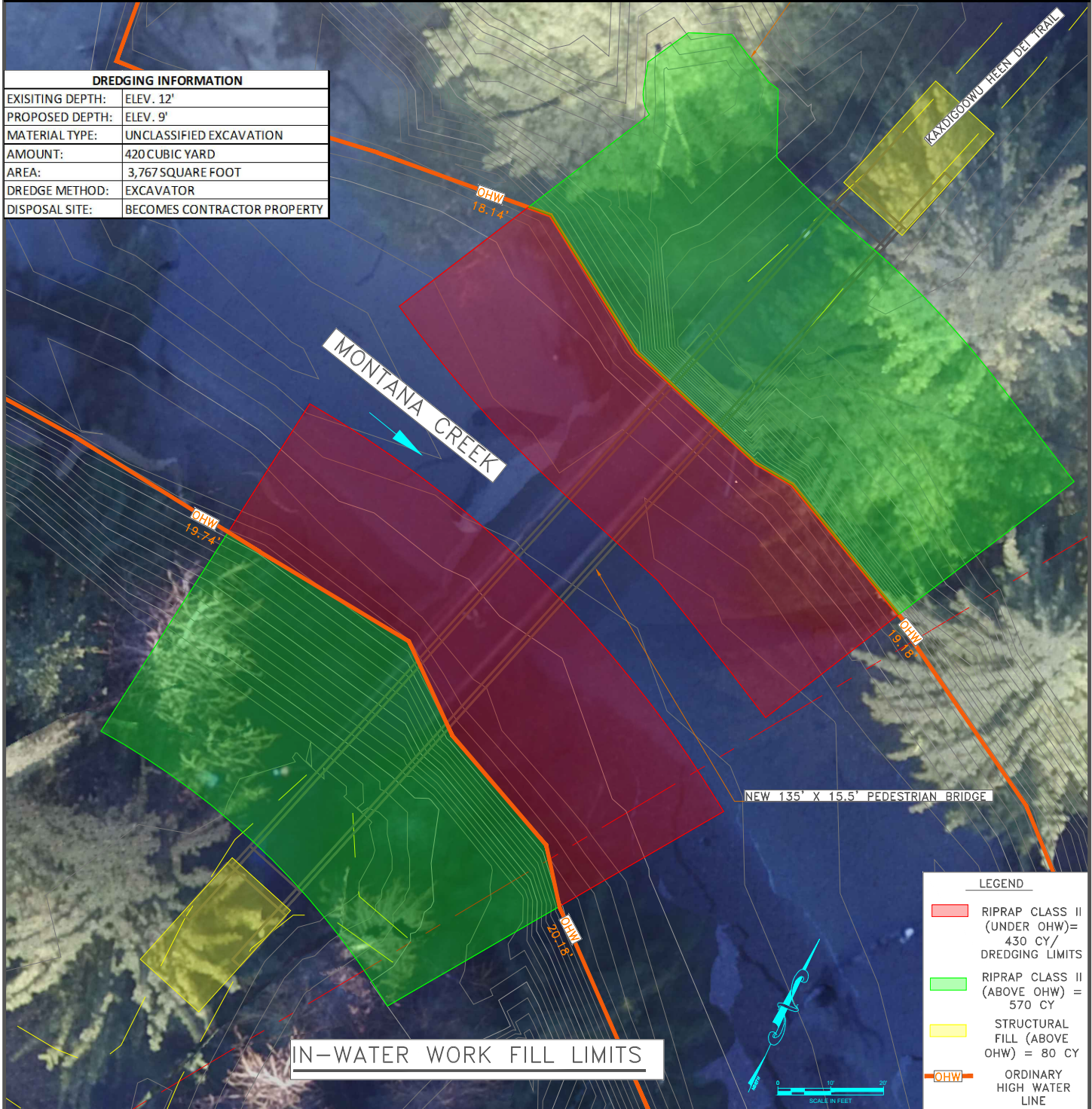
ADJACENT PROPERTY OWNERS:
-CITY AND BOROUGH OF JUNEAU
-UNIVERSITY OF ALASKA
-SOUTHEAST ALASKA LAND TRUST

APPLICATION BY:
ALASKA STATE DEPT. OF TRANSPORTATION
AND PUBLIC FACILITIES
DESIGN & ENGINEERING SERVICES DIVISION
SOUTHEAST REGION

JNU KAXDIGOOWU HEEN DEI IMP
(BROTHERHOOD BRIDGE TRAIL IMP)
AT: JUNEAU, ALASKA
SEC. 24&25, T40S, R65E
JUNEAU B-2 QUADRANGLE
COPPER RIVER MERIDIAN, ALASKA
DATE: 4/7/2022 SHEET 6 OF 12

PILE INFORMATION						
STRUCTURE	REMOVE EXISTING PILES	NO. REQUIRED	NEW STEEL PIPE PILE (DIA)	NO. REQUIRED	DRILLED ROCK SOCKET (EA)	DRILLED PILE TENSION ANCHOR (EA)
NEW BRIDGE- ABUTEMENT 1	N/A	N/A	18"	2	N/A	N/A
NEW BRIDGE- ABUTEMENT 2	N/A	N/A	18"	2	N/A	N/A
TEMPORARY PILES	N/A	N/A	12"	4	N/A	N/A

DREDGING INFORMATION	
EXISTING DEPTH:	ELEV. 12'
PROPOSED DEPTH:	ELEV. 9'
MATERIAL TYPE:	UNCLASSIFIED EXCAVATION
AMOUNT:	420 CUBIC YARD
AREA:	3,767 SQUARE FOOT
DREDGE METHOD:	EXCAVATOR
DISPOSAL SITE:	BECOMES CONTRACTOR PROPERTY



IN-WATER WORK FILL LIMITS

LEGEND	
█	RIPRAP CLASS II (UNDER OHW)= 430 CY/ DREDGING LIMITS
█	RIPRAP CLASS II (ABOVE OHW) = 570 CY
█	STRUCTURAL FILL (ABOVE OHW) = 80 CY
—	OHW — ORDINARY HIGH WATER LINE

ADJACENT PROPERTY OWNERS:
 -CITY AND BOROUGH OF JUNEAU
 -UNIVERSITY OF ALASKA
 -SOUTHEAST ALASKA LAND TRUST

APPLICATION BY:
 ALASKA STATE DEPT. OF TRANSPORTATION AND PUBLIC FACILITIES
 DESIGN & ENGINEERING SERVICES DIVISION
 SOUTHEAST REGION

JNU KAXDIGOOOWU HEEN DEI IMP (BROTHERHOOD BRIDGE TRAIL IMP)
 AT: JUNEAU ALASKA
 SEC. 24&25, T40S, R65E
 JUNEAU B-2 QUADRANGLE
 COPPER RIVER MERIDIAN, ALASKA
 DATE: 4/11/2022 SHEET 7 OF 12