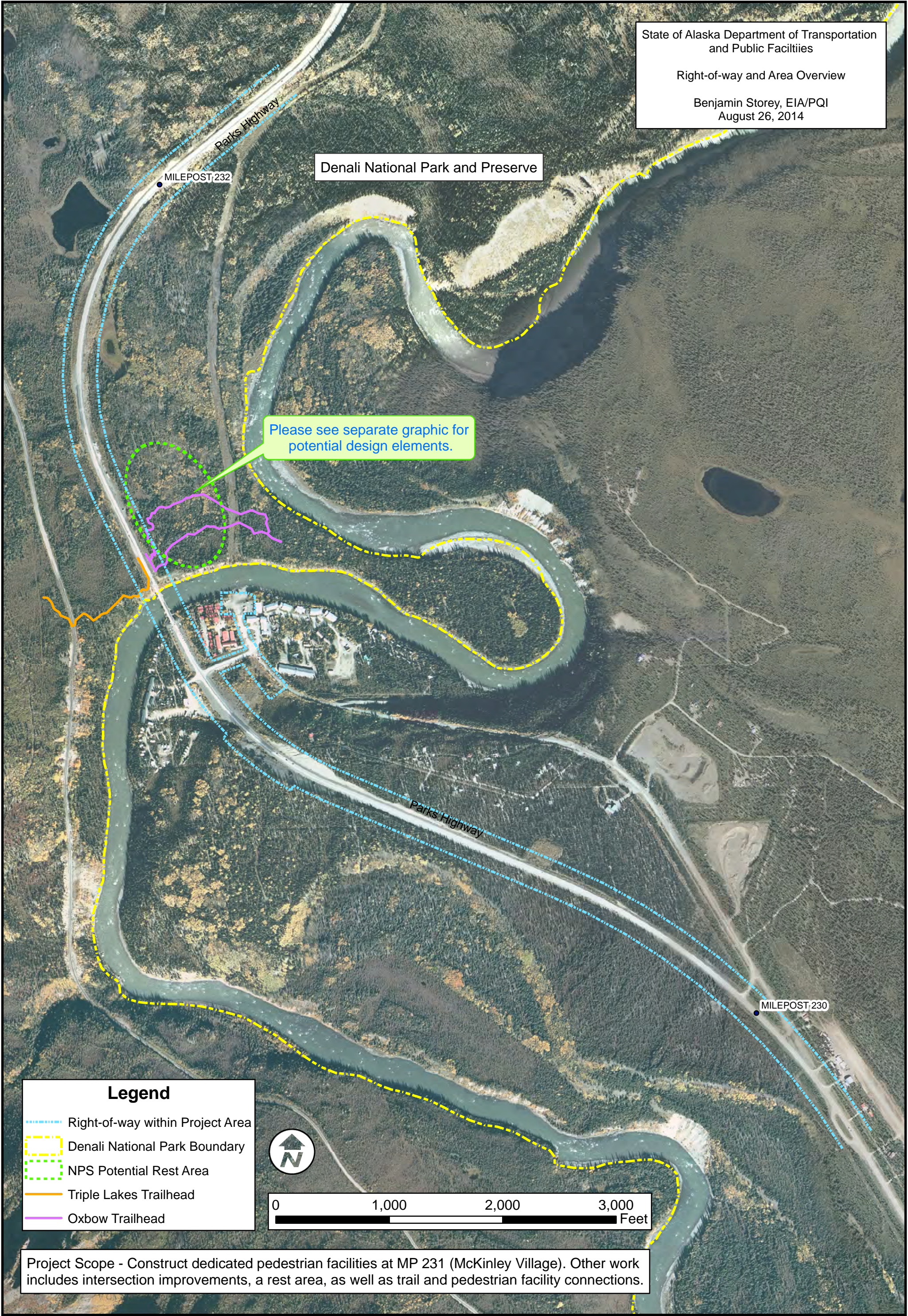


Parks Highway MP 231 Enhancements

Project: 61299 / TE-0A4-4(20)

State of Alaska Department of Transportation
and Public Facilities
Right-of-way and Area Overview
Benjamin Storey, EIA/PQI
August 26, 2014



Denali National Park and Preserve

MILEPOST 232

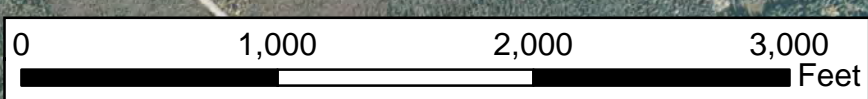
Please see separate graphic for potential design elements.

Parks Highway

MILEPOST 230

Legend

- Right-of-way within Project Area
- Denali National Park Boundary
- NPS Potential Rest Area
- Triple Lakes Trailhead
- Oxbow Trailhead



Project Scope - Construct dedicated pedestrian facilities at MP 231 (McKinley Village). Other work includes intersection improvements, a rest area, as well as trail and pedestrian facility connections.