

**Noatak Airport Relocation
Project No. 61478**

**Project Update
July 24, 2006**

We continue to perform preliminary design and environmental work for the project. The project is currently scheduled for Construction for 2008 or later depending on funding.

Current Design Status:

- Phase 1 of the Geotechnical program is complete. Sufficient drilling is complete to develop runway alignments. More geotechnical work is needed to identify other potential material sites.
- Preliminary Design work evaluating feasibility of runway/access road alignments, as well as material site locations is in progress.

Current Environmental Status:

- Completed oral history and archival research for historic and cultural resources.
- Completed wetlands mapping using aerial photography.
- Agency and Tribal scoping in progress.
- Environmental Document preparation in progress.

Upcoming Work:

- Environmental Fieldwork Noatak to evaluate accuracy of Wetlands and Habitat Mapping.
- DOT&PF site visit to evaluate material sites.
- Public Meeting in Mid to Late August (Meeting notices will be sent soon).

Feel free to contact the DOT&PF project manager with questions/comments:

Ryan Anderson, P.E.
Alaska DOT&PF, Northern Region
2301 Peger Road
Fairbanks, AK 99709

907-451-5129

Noatak Airport Relocation Project

Notice of Public Meeting

The Alaska Department of Transportation and Public Facilities (DOT&PF) in cooperation with the Federal Aviation Administration (FAA) is planning to relocate the Noatak Airport. In addition to the current airport experiencing significant erosion, the existing runway is too short, too narrow, and has non-standard runway safety areas. The purpose of this project is to construct an airport in Noatak that meets the forecasted aviation demands for the community. DOT&PF is holding a Public Meeting in Noatak on August 17th at 1:00 PM to discuss the proposed project and gather community input.

Potential Project elements:

- Airport relocation to a more suitable site
- Runway adequate for design aircraft
- Apron and taxiway designed to meet FAA safety guidelines
- Airport access road
- Electric line extension
- Property acquisition for new airport site and access road

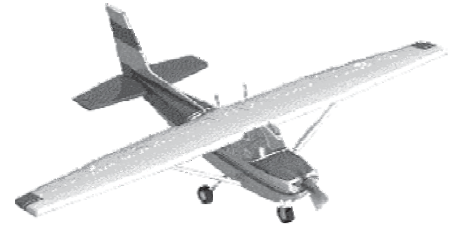
How does this impact the local community? Consultants for DOT&PF are preparing an Environmental Assessment (EA) to assess local impacts. Preliminary research and resource agency comments indicate the following impact areas are of special concern :

- Material site impacts
- Wetland fill
- Fish and wildlife habitat
- Property acquisition

DOT&PF requests your attendance at the Public Meeting to learn about the project, ask questions, and provide comments.

What has happened so far?

DOT&PF has selected a preferred airport location and access road alignment. Ongoing materials investigations have identified potential material sites. A cultural resource investigation has identified areas of potential concern and a wetlands delineation is scheduled to determine wetland impacts. DOT&PF has solicited input from resource agencies about the project. DOT&PF contracted with USKH, Inc. to complete environmental and public involvement activities.



What is happening now?

DOT&PF is holding a Public Meeting to discuss the project on August 17th at 1:00 PM at the Noatak School. Refreshments will be available. If you have questions, please contact Ryan Anderson at the contact information below.

***WE WOULD LIKE TO HEAR
FROM YOU!***

PLEASE SUBMIT WRITTEN COMMENTS TO:

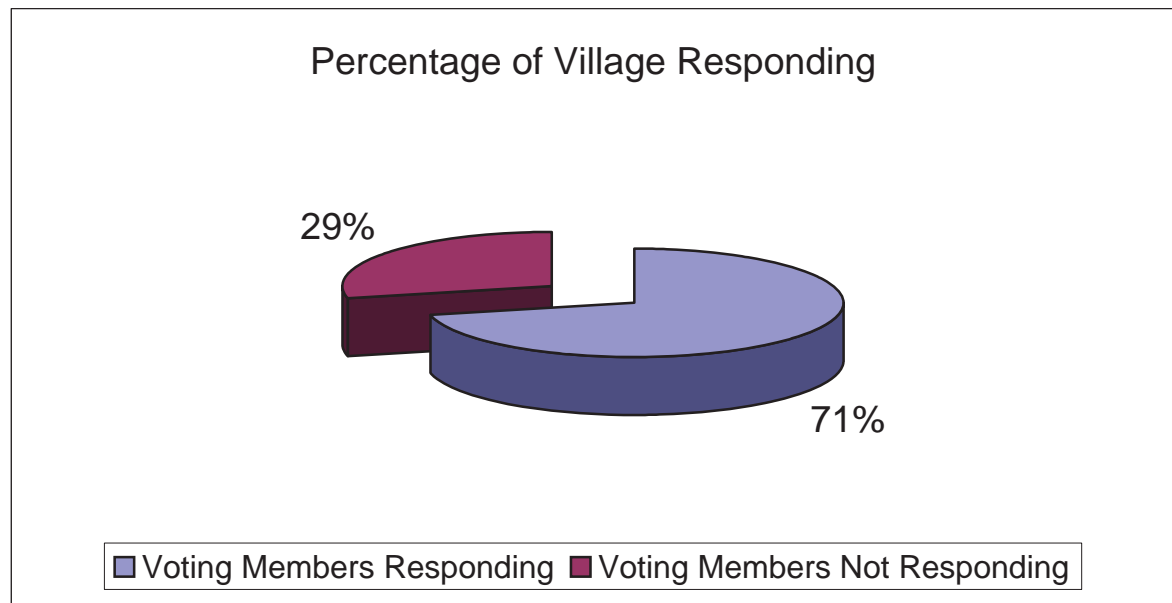
Ryan Anderson, P.E. DOT&PF
Engineering Manager
Northern Region DOT&PF Design
2301 Peger Road
Fairbanks, AK 99709
Phone: (907) 451-5129
Fax: (907) 451-5126
Email: ryan_anderson@dot.state.ak.us

Noatak Road/Airport Village Survey - 1/1/2005

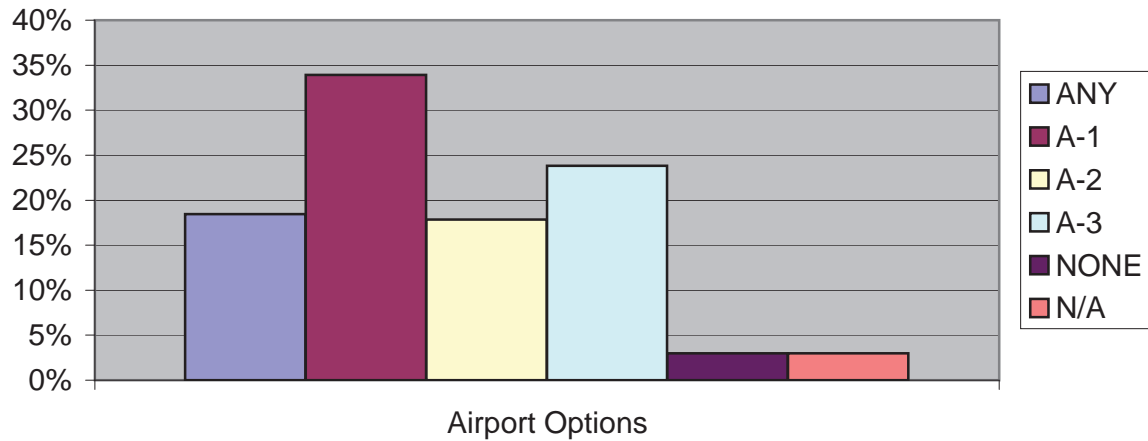
Total Voting Members of Noatak (2001)	235
Voting Members Responding	168
Voting Members Not Responding	67
Percentage of Village Responding	71.49%

In favor of relocating the Airport	94.05%
ANY	18.45%
A-1	33.93%
A-2	17.86%
A-3	23.81%
Against relocating the Airport	2.98%
Undecided	2.98%
Total	100.00%

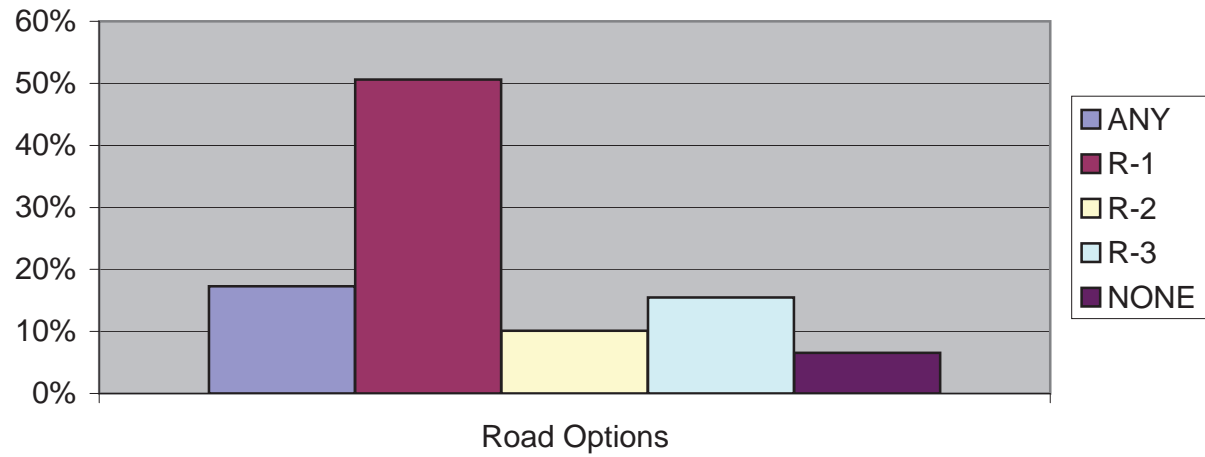
In Favor of building the Road	93.45%
ANY	17.26%
R-1	50.60%
R-2	10.12%
R-3	15.48%
Against building the Road	6.55%
Total	100.00%

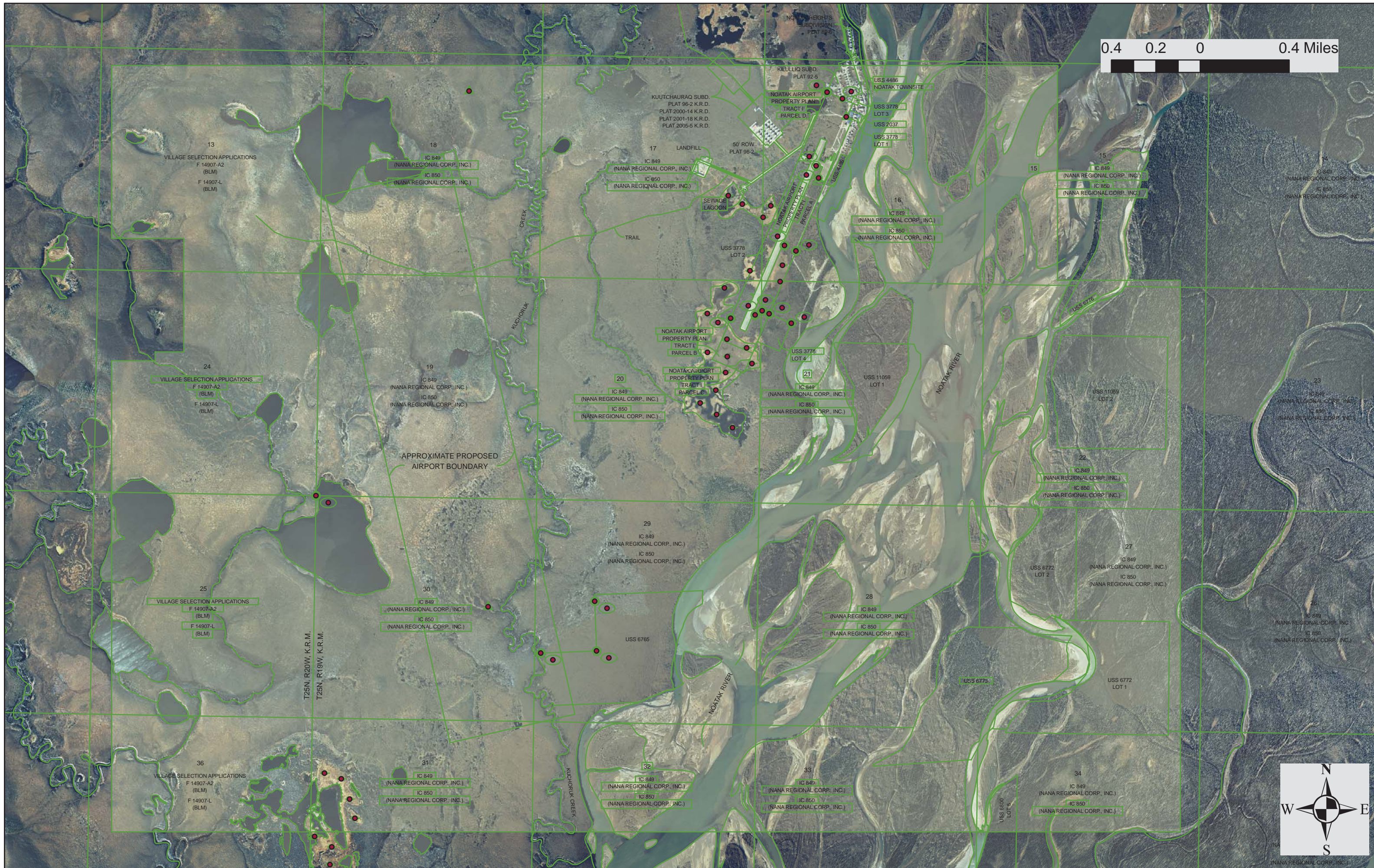
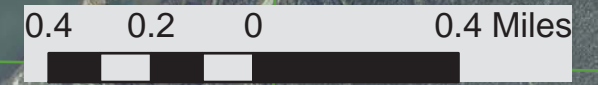


Noatak Responses to Airport Options



Noatak Responses to Road Options





13
VILLAGE SELECTION APPLICATIONS
F 14907-A2 (BLM)
F 14907-L (BLM)

18
IC 849 (NANA REGIONAL CORP., INC.)
IC 850 (NANA REGIONAL CORP., INC.)

KUUTCHAURAQ SUBD.
PLAT 96-2 K.R.D.
PLAT 2000-14 K.R.D.
PLAT 2001-18 K.R.D.
PLAT 2005-5 K.R.D.

KILLULLIO SUBD.
PLAT 92-5
NOATAK AIRPORT
PROPERTY PLAN
TRACT 1
PARCEL D

USS 4486
NOATAK TOWNSITE
USS 3778
LOT 3
USS 2037
USS 3778
LOT 1

15
IC 849 (NANA REGIONAL CORP., INC.)
IC 850 (NANA REGIONAL CORP., INC.)

14
IC 849 (NANA REGIONAL CORP., INC.)
IC 850 (NANA REGIONAL CORP., INC.)

24
VILLAGE SELECTION APPLICATIONS
F 14907-A2 (BLM)
F 14907-L (BLM)

19
IC 849 (NANA REGIONAL CORP., INC.)
IC 850 (NANA REGIONAL CORP., INC.)

20
IC 849 (NANA REGIONAL CORP., INC.)
IC 850 (NANA REGIONAL CORP., INC.)

NOATAK AIRPORT
PROPERTY PLAN
TRACT 1
PARCEL B
NOATAK AIRPORT
PROPERTY PLAN
TRACT 1
PARCEL C

21
IC 849 (NANA REGIONAL CORP., INC.)
IC 850 (NANA REGIONAL CORP., INC.)

23
IC 849 (NANA REGIONAL CORP., INC.)
IC 850 (NANA REGIONAL CORP., INC.)

23
IC 849 (NANA REGIONAL CORP., INC.)
IC 850 (NANA REGIONAL CORP., INC.)

APPROXIMATE PROPOSED
AIRPORT BOUNDARY

29
IC 849 (NANA REGIONAL CORP., INC.)
IC 850 (NANA REGIONAL CORP., INC.)

27
IC 849 (NANA REGIONAL CORP., INC.)
IC 850 (NANA REGIONAL CORP., INC.)

25
VILLAGE SELECTION APPLICATIONS
F 14907-A2 (BLM)
F 14907-L (BLM)

30
IC 849 (NANA REGIONAL CORP., INC.)
IC 850 (NANA REGIONAL CORP., INC.)

USS 6765

28
IC 849 (NANA REGIONAL CORP., INC.)
IC 850 (NANA REGIONAL CORP., INC.)

USS 6772
LOT 2

26
IC 849 (NANA REGIONAL CORP., INC.)
IC 850 (NANA REGIONAL CORP., INC.)

T25N, R20W, K.R.M.
T25N, R19W, K.R.M.

36
VILLAGE SELECTION APPLICATIONS
F 14907-A2 (BLM)
F 14907-L (BLM)

31
IC 849 (NANA REGIONAL CORP., INC.)
IC 850 (NANA REGIONAL CORP., INC.)

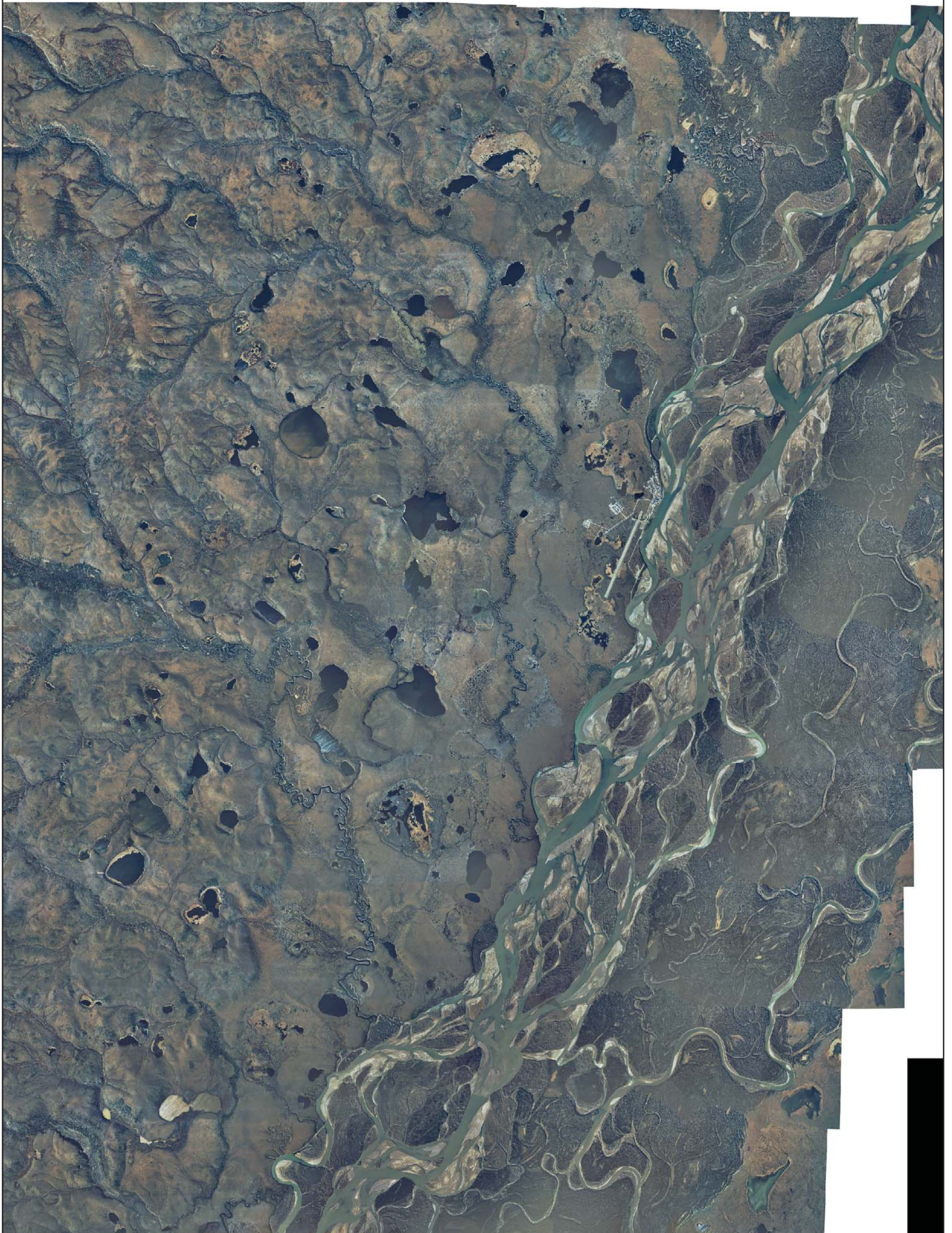
32
IC 849 (NANA REGIONAL CORP., INC.)
IC 850 (NANA REGIONAL CORP., INC.)

33
IC 849 (NANA REGIONAL CORP., INC.)
IC 850 (NANA REGIONAL CORP., INC.)

34
IC 849 (NANA REGIONAL CORP., INC.)
IC 850 (NANA REGIONAL CORP., INC.)



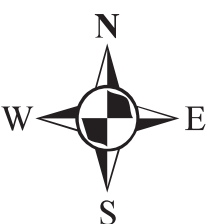
(NANA REGIONAL CORP., INC.)

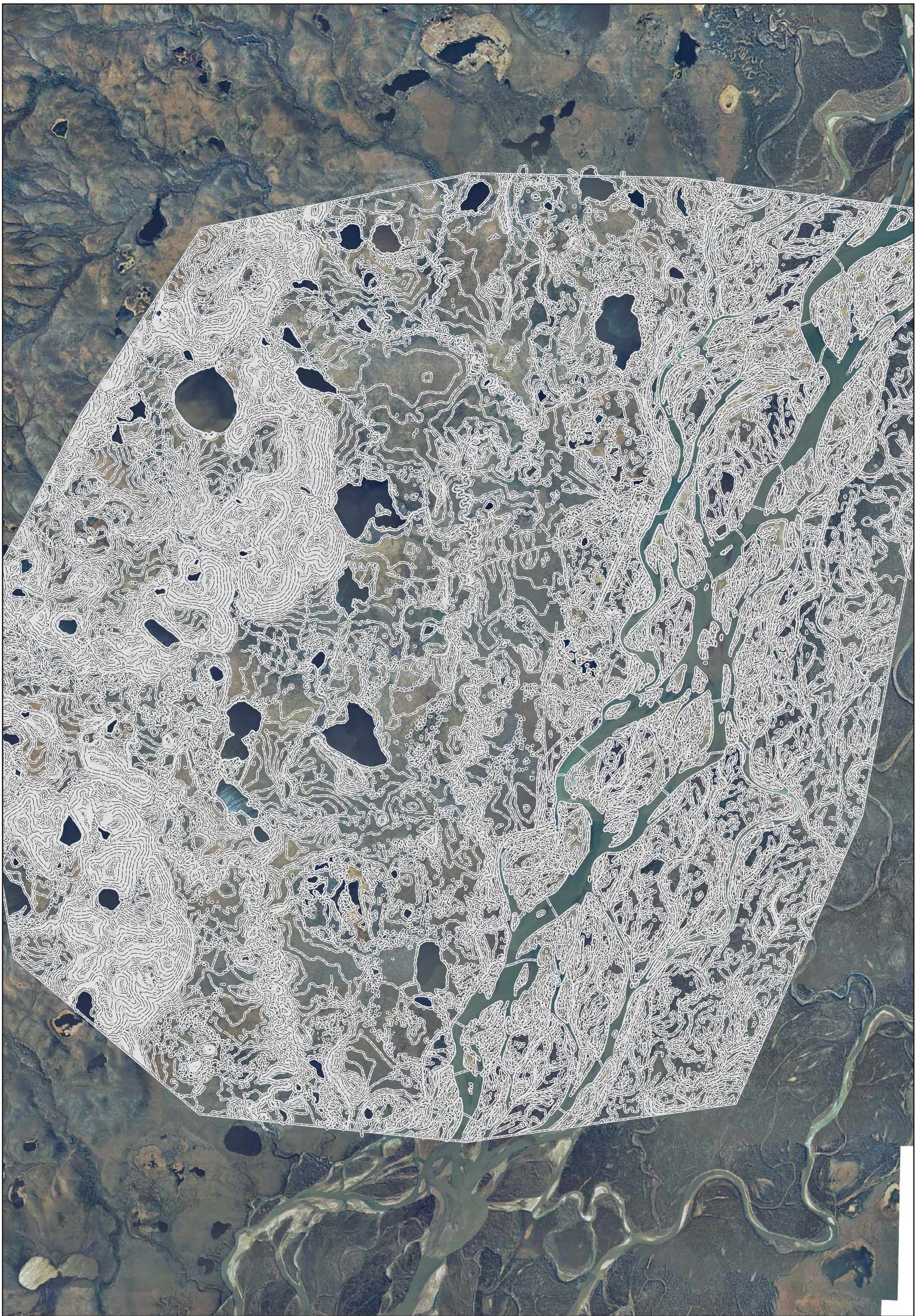


1 0.5 0 1 Miles

Noatak Airport Relocation Project Orthophoto

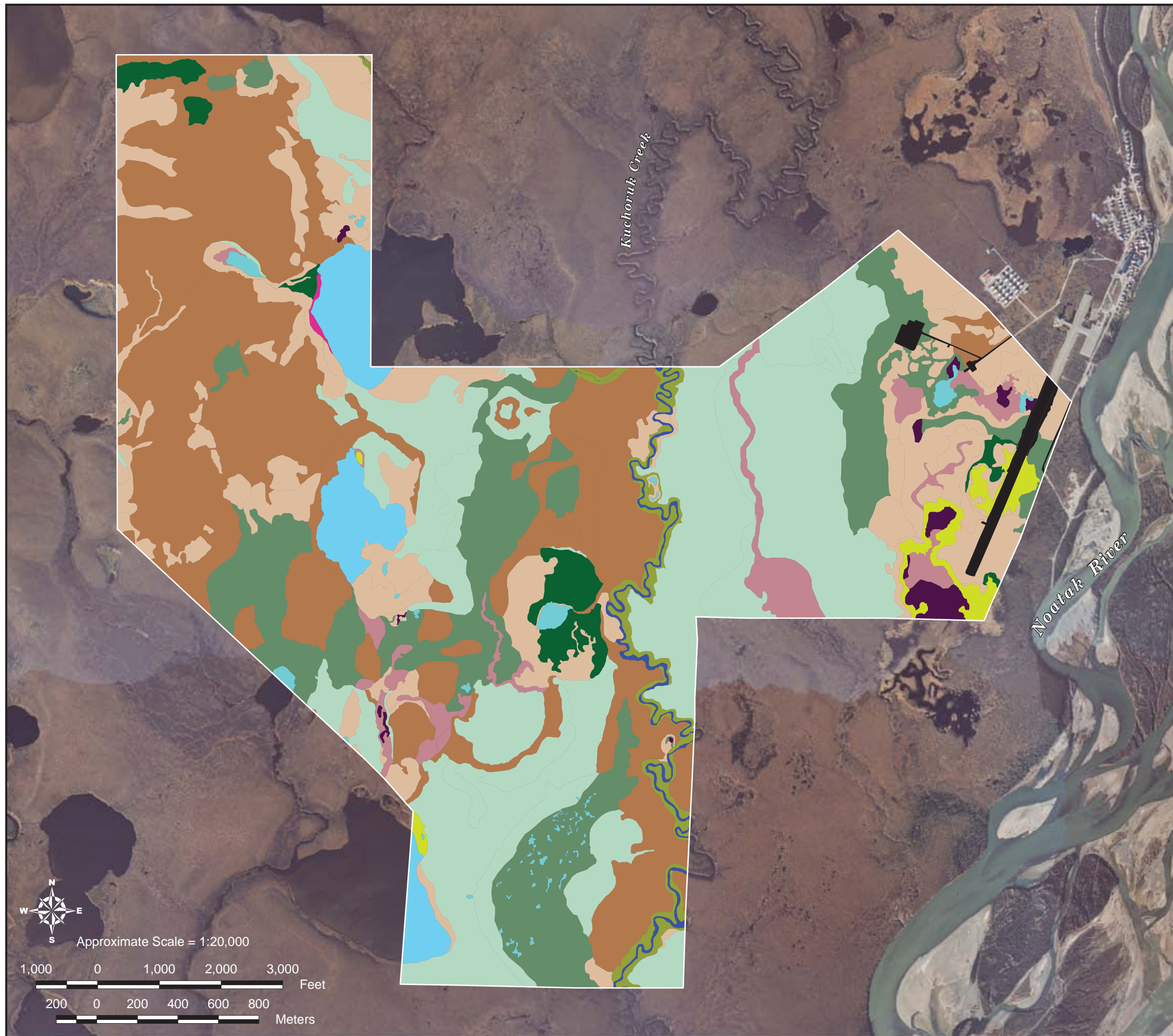
Aerial Photography taken September 29, 2005





Noatak Airport Relocation Project
Topographic Survey Limits

Aerial Photography taken September 29, 2005



NWI¹ Code and Associated Wetland Class

Surface Waters of the U.S.:

- L1UBH Lake
- L2ABH Aquatic Herbaceous
- R3UBH Perennial Stream
- PUBH Pond

Other Waters of the U.S.:

- PEM1H, PUB/EM1H Aquatic Graminoid Marsh
 - PEM1F Wet Graminoid Meadow
 - PEM/SS1F, PEM1/SS3B, PSS1/3B//PEM1F, PSS3/EM1B Graminoid-Shrub Bog
 - PEM1B Moist Graminoid Meadow
 - PEM/SS1B Moist Shrub-Graminoid Tundra
 - PSS1/3C, PSS1C Riverine Scrub
 - PSS/EM1B Shrub-Sedge Tundra
 - PSS1/3B, PSS1B Shrub Tundra
 - PFO4/SS1B Needleleaf Forest
- Ur Uplands

¹Follows the National Wetlands Inventory (NWI) classification system of Cowardin et al. (1979). **Jurisdictional Wetland:** All wetlands in this study area have a downstream connection to navigable waters of the Noatak River and are considered jurisdictional.

Notes:
 Background imagery: true-color photography acquired October 2005 by AeroMap U.S.
 Map projection: ASP Zone 7, NAD83, US foot

Wetlands Determination and Habitat Assessment of Noatak Airport, Alaska

Figure 2. Wetland Types

map prepared by:
ABR environmental research & services

15 March 2006 | ABR File: Noatak_Airport_Wetlands_06-201-1.mxd