

Noatak River Erosion Update

Site Visit: March 25th, 2015

6/10/2015

On March 25th, 2015, the Department of Transportation and Public Facilities held a community meeting in Noatak discussing information about relocating the Noatak Airport. The relocation is necessary because of the encroachment of the Noatak River towards the apron; intrusion of the runway safety areas; and to construct the necessary updates required to meet FAA standards for safe and efficient operation of a rural airport.

The previous site visit where the DOT&PF recorded measurements of the embankment was in 2013.

As shown in the graphic attached, there are two significant locations labeled in negatives (black and white) which display the total perpendicular distances of the far edge of haul road to the gravel pit to the edge of the eroding riverbank.

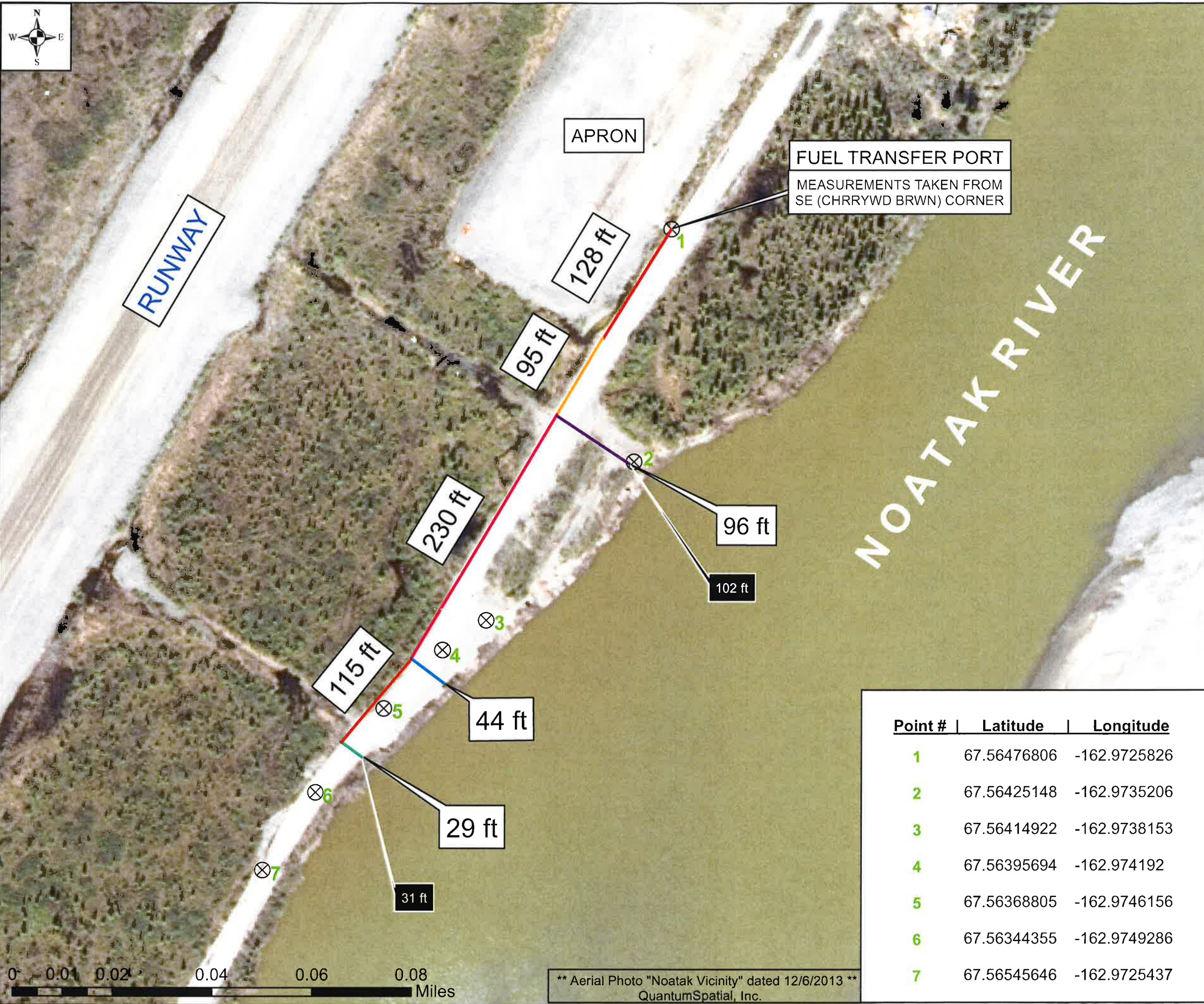
Distance (1) which was recorded in 2013 was taken at 102 feet. Distance (2) which was recorded in 2015 was taken at 96 feet. This two year interval indicates there is a loss of **6 feet** at this particular section of the haul road.

Distance (3) was also recorded in 2013 was taken at 31 feet. Distance (4) was recorded in 2015 was taken at 29 ft. This displays a loss of **2 feet** at this particular section of the haul road.

Since 2000, the community of Noatak and the DOT&PF has recorded a loss of more than **40 feet** of embankment.

** The DOT&PF recently received notices as well as the provision of photos of the gravel cliff from residents of Noatak, displaying the aftermath of ice-breakup and the effects of the continually thawing and exposed active layer of permafrost.

Following the graphic of the erosion occurring is a few recent photos of the erosion from a community member, for the DOT&PF.



Noatak Riverbank Erosion Update 2015



Legend

- ⊗ 25/03/2015 Erosion Coordinates
- *** Projected Coordinate System: ***
Name: NAD_1983_Alaska_Albers
- Geographic Coordinate System:
Name: GCS_North_American_1983

DATES OF RECORDED MEASUREMENTS:

- BLACK ON WHITE TEXT: 25/03/2015
- WHITE ON BLACK TEXT: 12/06/2013

Point #	Latitude	Longitude
1	67.56476806	-162.9725826
2	67.56425148	-162.9735206
3	67.56414922	-162.9738153
4	67.56395694	-162.974192
5	67.56368805	-162.9746156
6	67.56344355	-162.9749286
7	67.56545646	-162.9725437



State of Alaska
Department of Transportation
and Public Facilities



