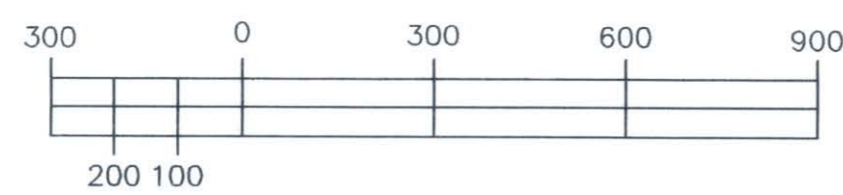
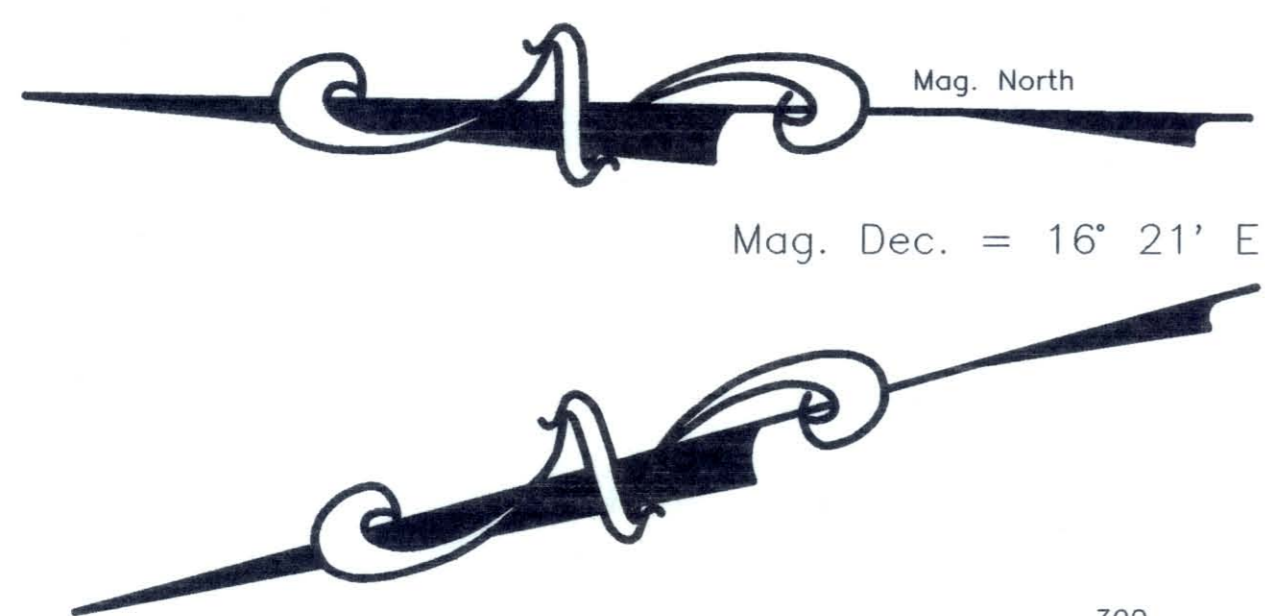


CX 12'D  
 108 to 150' W  
 146 to 75' W  
 111 to 0  
 143 to 0  
 Primary Run  
 B 1150 120 W  
 E 38+30 60 W  
 3+90  
 35+90  
 2420'  
 2900  
 3000



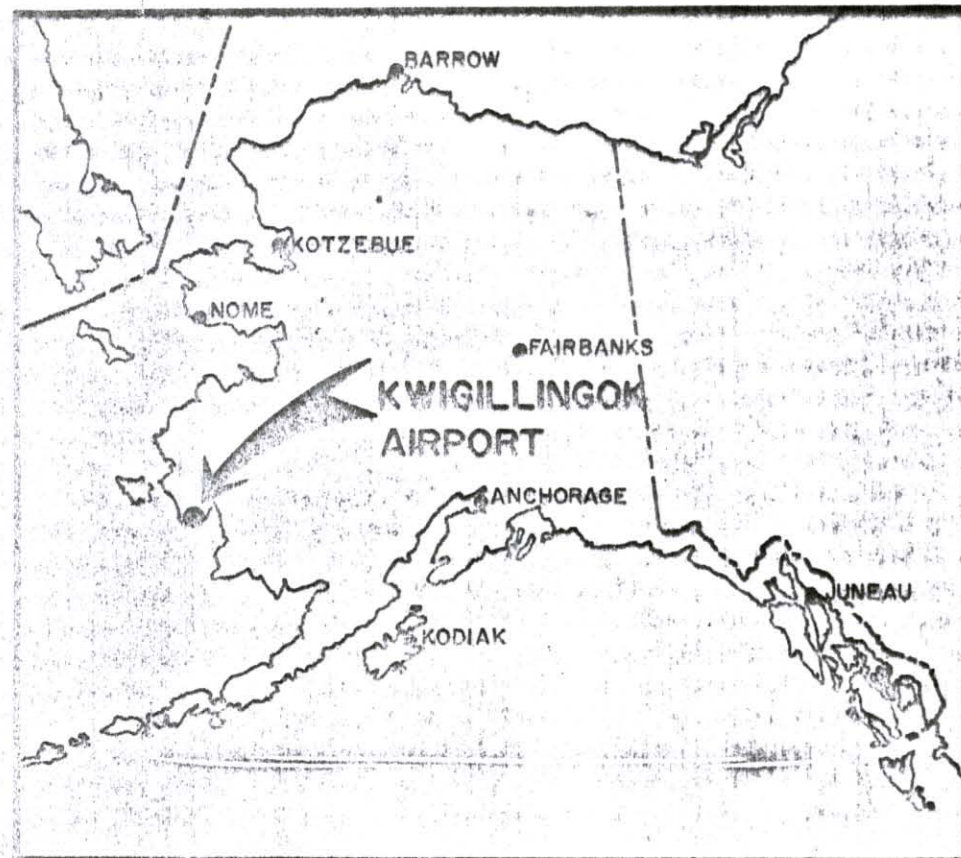
BY	DATE	REVISIONS	BY	DATE	REVISIONS

STATE OF ALASKA  
**DEPARTMENT OF TRANSPORTATION  
 AND PUBLIC FACILITIES**  
 CENTRAL REGION-DESIGN AND CONSTRUCTION-AVIATION  
 APPROVED: STEVE VAN HORN, P.E. DESIGN SECTION CHIEF  
 APPROVED: JOHN G. WAHL, P.E. PROJECT MANAGER

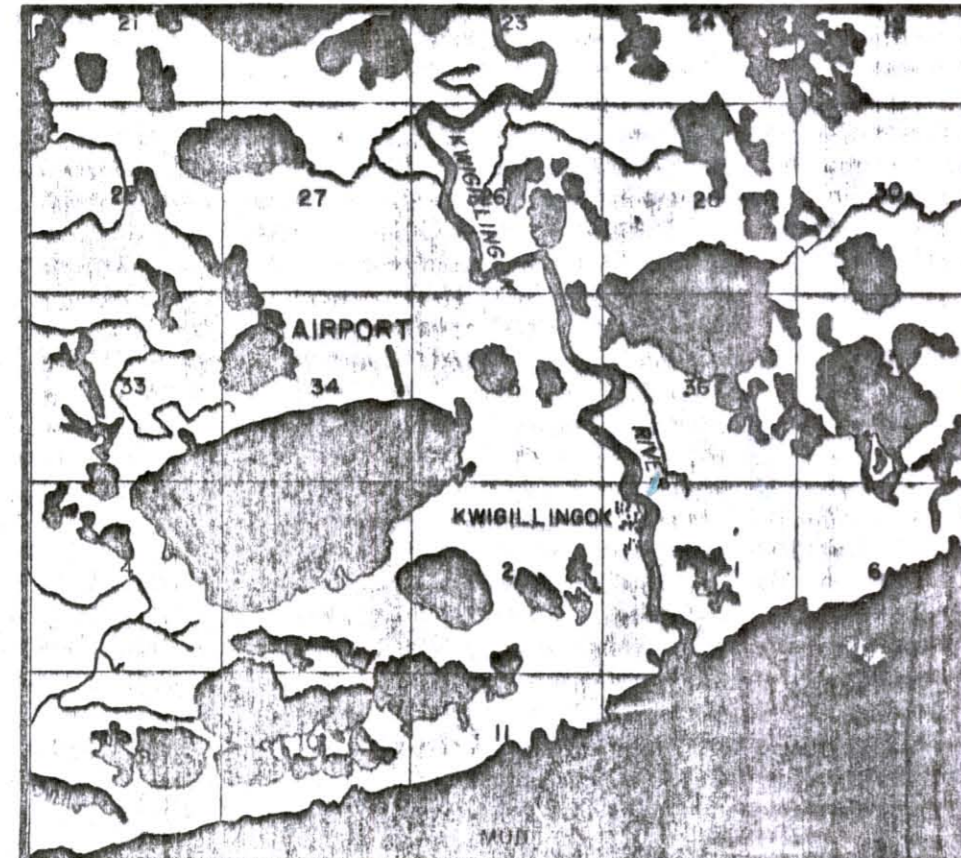
DATE \_\_\_\_\_  
 DESIGN \_\_\_\_\_  
 DRAWN \_\_\_\_\_  
 CHECKED \_\_\_\_\_

**KWIGILLINGOK AIRPORT**  
 TESTHOLE PLAN

SHEET  
 1  
 OF  
 1

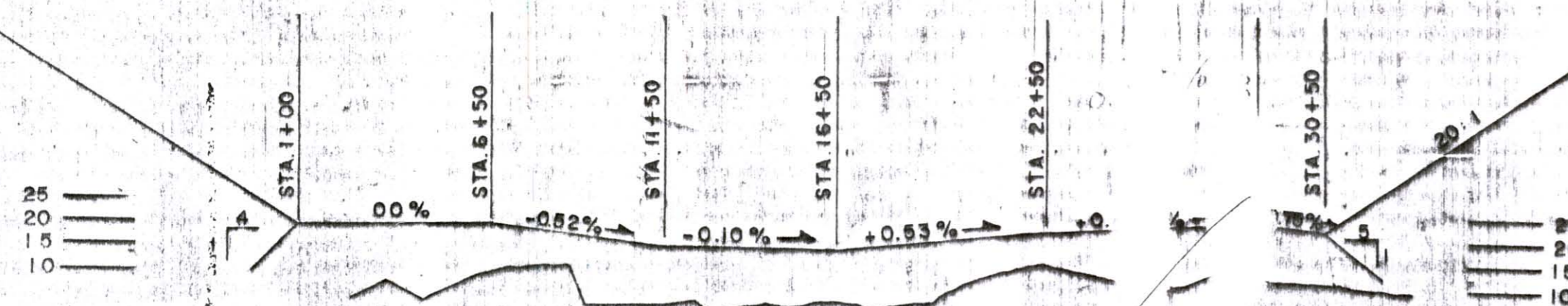
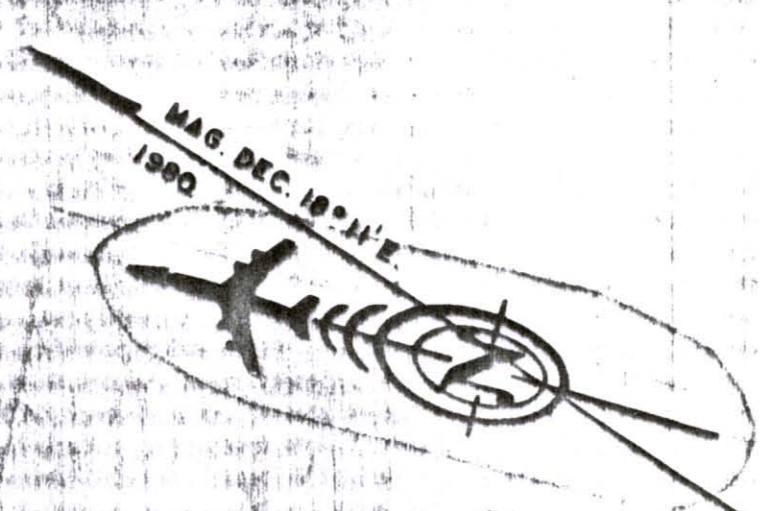


LOCATION MAP



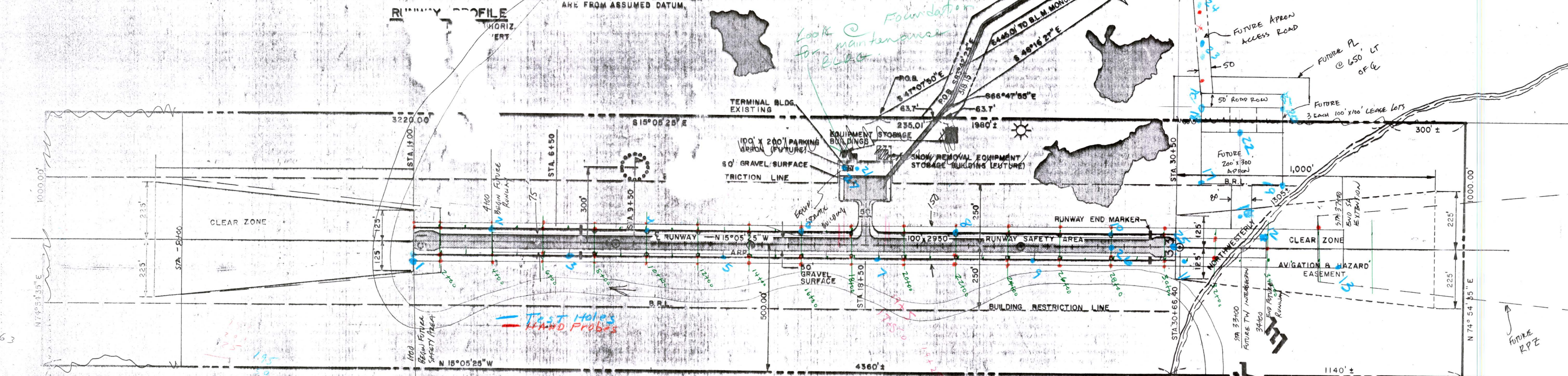
VICINITY MAP

SCALE 1" = 1 mile  
 PROTRACTED T. 3S - R. 80W - 6 R. 81W  
 T. 4S - R. 80W - 6 R. 81W  
 SEWARD MERIDIAN, ALASKA



RUNWAY PROFILE

NOTE: ELEVATION IS SHOWN ON PROFILE ABOVE FROM ASSUMED DATUM.



- NOTES:**
- NO WIND DATA AVAILABLE. PILOT REPORTS INDICATE THAT RUNWAY IS ALIGNED WITH PREVAILING WINDS.
  - MEAN DAILY MAXIMUM TEMPERATURE FOR WINTER MONTH BASED ON DATA OBTAINED AT NEAREST TOWN, LOCATED APPROXIMATELY 80 MILES NORTHWEST OF KWIGILLINGOK.
  - DATA OBTAINED FROM FAA FORM 5010, KWIGILLINGOK PROPERTY PLANS, AND KWIGILLINGOK "AS-BUILT" DRAWINGS.
  - ACCESS ROAD DISTANCES NOT TO SCALE.

BASIC DATA TABLE				
RUNWAY DATA				
	RUNWAY 14/38		RUNWAY	
	EXISTING	FUTURE	EXISTING	FUTURE
APPROACH LIGHTING	0.19%	0.19%		
LANDING STRIP	NOT AVAILABLE	NOT AVAILABLE		
RESERVED RUNWAY	NONE	NONE		
RUNWAY SURFACE	DIRT	GRAVEL		
GRADIENT	NOT APPLICABLE	NOT APPLICABLE		
APPROACH SURFACES	20:1	20:1		
RUNWAY LIGHTING	NONE	MIRL		
RUNWAY MARKINGS	NONE	NONE		
NAVIGATION AIDS	NONE	NONE		
AIRPORT ZONE	8400	8400		
RUNWAY OF GUARANTEE	75' x 35'	75' x 35'		
RUNWAY SAFETY AREA	100' x 2950'	100' x 2950'		
RUNWAY SAFETY AREA IMPROVEMENT				

BASIC DATA TABLE			
AIRPORT DATA			
	EXISTING	FUTURE	
AIRPORT ELEVATION M.S.L. (EST.)	80'	SAME	
AIRPORT REFERENCE POINT (A.R.P.)	33° 5'	33° 5'	
MEAN DAILY MAX. TEMP. FOR HOTTEST MONTH	50° F	50° F	
TAXIWAY LIGHTING	NONE	MIRL	
RAMP LIGHTING	NONE	MIRL	
LATITUDE	66° 52' 41"		
LONGITUDE	155° 08' 31"		

LEGEND			
	EXISTING	FUTURE	
PROPERTY LINE			
BUILDING RESTRICTION LINE (B.R.L.)			
A.D.A. MONUMENTS			
AIRPORT REFERENCE POINT			
WIND SOARS & SEGMENTED CIRCLE			
BLM BRASS CAP			
AIRPORT FACILITIES			
RUNWAY END MARKERS			
RETROREFLECTIVE MARKERS			
ROTATING BEACON			
SHORE LINE			
EQUIPMENT STORAGE BUILDING			
GRAVEL SURFACING			

DEVIATION FROM DESIGN STANDARDS		
DESCRIPTION	STANDARD	EXISTING
PARKING APRON/RUNWAY CENTERLINE SEPARATION	225'	170'
RUNWAY SAFETY AREA	100' x 2950'	100' x 2950'
RUNWAY WIDTH	80'	

STATE OF ALASKA  
 DEPARTMENT OF TRANSPORTATION  
 AND PUBLIC FACILITIES  
 DIVISION OF AVIATION-DESIGN AND CONSTRUCTION  
 KWIGILLINGOK, ALASKA  
 AIRPORT LAYOUT PLAN

NO.	DATE	CHANGE
1	1/18/85	AS-BUILT FOR 1982 SURFACING PROJECT D25751
2	4/15/83	ADDED FAA COMMENTS.
3	1/17/81	ADD GRAVEL SURFACING
4	5/23/78	FAA APPROVED

APPROVED: *James J. Rhode, P.E.*  
 CHIEF DESIGNER  
 SCALE: 1" = 200'  
 REVISIONS